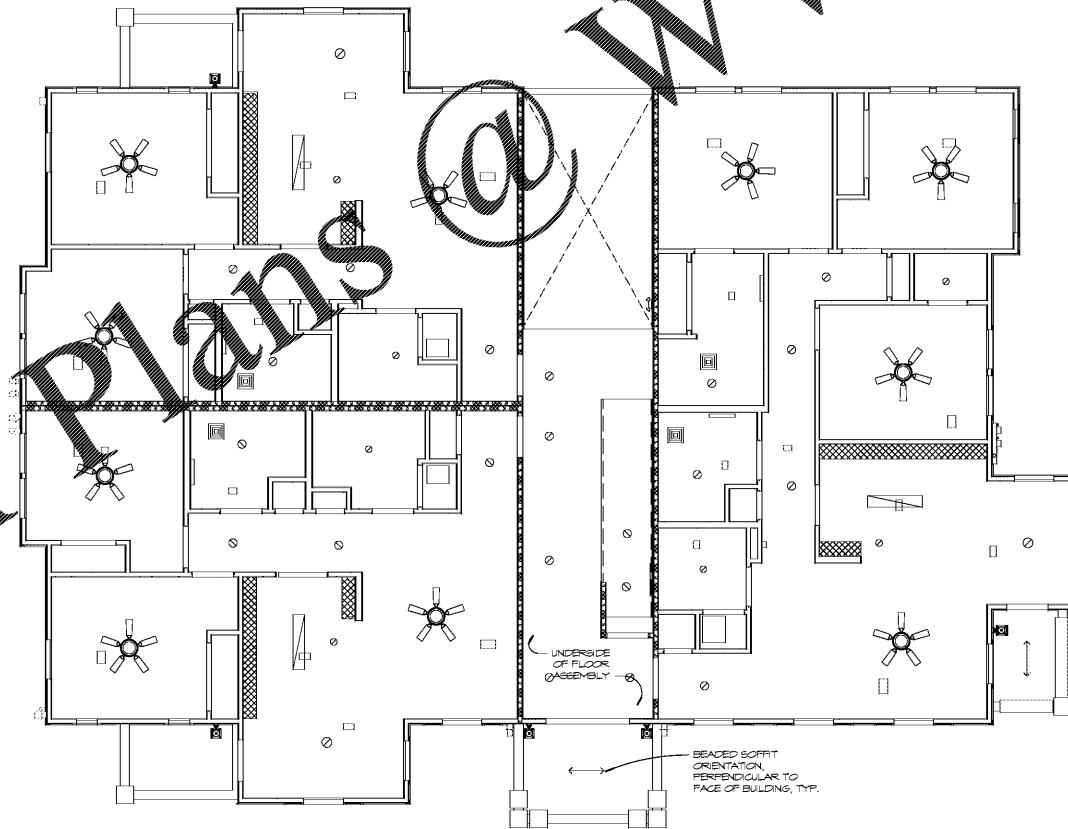


14 IB - SECOND FLOOR RCP  
SCALE: 3/16" = 1'-0"



26 IB - GROUND FLOOR RCP  
SCALE: 3/16" = 1'-0"

- NOTES:
1. PROVIDE FLUSH LOCKABLE METAL ATTIC ACCESS DOOR LOCATED IN THE BREEZEWAY CEILING OF GARDEN APARTMENT BUILDINGS.
  2. PROVIDE ONE ATTIC ACCESS PANEL PER SECTION OF ATTIC ABOVE SECOND FLOOR GARDEN APARTMENT UNITS. RISK RCP MUST BE RATED, LIKE TO PROVIDE CONTINUOUS RATING OF ROOF/CEILING ASSEMBLY.
  3. DUCTWORK IN LOWER LEVEL UNITS TO BE LOCATED IN FLOOR/CEILING ASSEMBLY, WITH ALL PENETRATIONS PREFORMED AND PROTECTED BY RADIATION DAMPERS.
  4. DUCTWORK AT TOP FLOORS TO BE CONTAINED IN SOFFITS AT GARDEN APARTMENTS. DO NOT PENETRATE CEILING/ROOF ASSEMBLY WITH DUCTS.
- 7'-6" SOFFIT, 6'-11" AT UFAS UNITS  8'-0" SOFFIT AT UPPER FLOORS  
 9'-0" CEILING, TYP.

Order Plans @

WWW.LDILine.com



Architecture Planning Interiors Research  
50 South B.B. King Boulevard  
Memphis, Tennessee 38103  
Telephone 901 521 1440  
Fax 901 525 2760  
E-mail info@lrk.com

Client:  
**McCormack Baron Salazar**

720 Olive St Suite 2500  
St. Louis, MO 63101

Issues and Revisions

Date	Issued / Revised
3/16/2020	50% CONSTRUCTION DOCS
5/18/2020	80% CONSTRUCTION DOCS
7/13/2020	PERMIT SUBMISSION

BUILDING ADDRESSES

TYPE G-2	342, 444, 446, 448 RATLIFF LANE 324, 236, 238, 330 SHAWNEE PLACE
TYPE I-A	378, 448 VANCE AVE 316, 304 FOOT LANE 388 S DANNY THOMAS BLVD
TYPE I-C	368, 481 VANCE AVE 378 SHAWNEE PLACE
TYPE I-A	321 SHAWNEE PLACE 450, 380 FOOT LANE 345 S DANNY THOMAS BLVD
TYPE I-A	402, 406 FOOT LANE

©2020 LRK, Inc.  
Drawings, written material, and design concepts shall not be used or reproduced in whole or part in any form or format without prior written consent of LRK, Inc. Do not scale drawings. Use given dimensions only. If not shown, verify correct dimensions with the Architect. Contractor shall check and verify all dimensions and conditions at job site.

Seal



LRK Project Number: 01.15100.43

Project Name:  
**South City CNI Phase 4**  
Memphis TN

Drawing Name:  
**REFLECTED CEILING PLANS**

Drawn By: ADB  
Checked By: HJL

IC-A111