

Branch Panel: HHA									
Location:			Volts: 120/240 Single			A.I.C. Rating: 10K			
Supply From:			Phases: 1			Main Type: MCB			
Mounting: Recessed			Wires: 3			Main Rating: 100 A			
Enclosure: NEMA 3R							MCB Rating: 100 A		
Notes: ALL BREAKERS AFI TYPE									
CKT	Circuit Description	Trip	Poles	A	B	Poles	Trip	Circuit Description	CKT
HHA-1	Other	20 A	1	157 VA	360 VA		1	Receptacle	HHA-2
HHA-3	Receptacle	20 A	1	180 VA	360 VA		1	Receptacle	HHA-4
HHA-5	Receptacle	20 A	1	180 VA	360 VA		1	Receptacle	HHA-6
HHA-7	Receptacle	20 A	1	180 VA	360 VA		1	Receptacle	HHA-8
HHA-9	Spare	20 A	1	0 VA	0 VA		1	Spare	HHA-10
HHA-11	Spare	20 A	1	0 VA	0 VA		1	Spare	HHA-12
HHA-13	Spare	20 A	1	0 VA	0 VA		1	Spare	HHA-14
HHA-15	Spare	20 A	1	0 VA	0 VA		1	Spare	HHA-16
HHA-17	Spare	20 A	1	0 VA	0 VA		1	Spare	HHA-18
HHA-19	HVAC	20 A	1	1500 VA	180 VA		1	Receptacle	HHA-20
HHA-21									HHA-22
HHA-23									HHA-24
HHA-25									HHA-26
HHA-27									HHA-28
HHA-29									HHA-30
				<b>Total Load:</b>	1028 VA	2097 VA			
				<b>Total Amps:</b>	9 A	17 A			

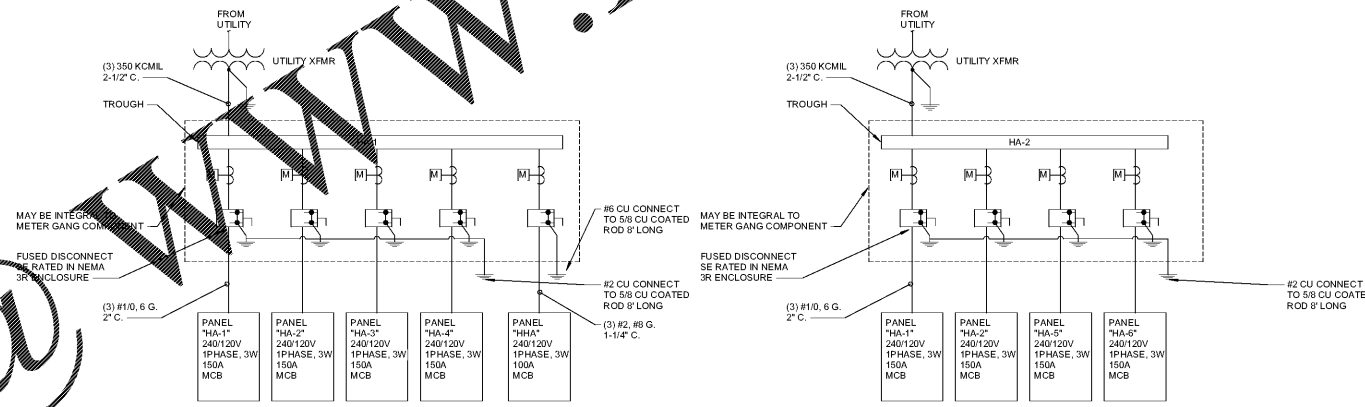
Load Classification	Connected Load	Demand Factor	Estimated Demand	Panel Totals
HVAC	1500 VA	100.00%	1500 VA	
Lighting - Dwelling Unit	60 VA	100.00%	60 VA	<b>Total Conn. Load:</b> 3123 VA
Other	52 VA	100.00%	52 VA	<b>Total Est. Demand:</b> 3123 VA
Receptacle	1440 VA	100.00%	1440 VA	<b>Total Conn.: 13 A</b>
Lighting	120 VA	100.00%	120 VA	<b>Total Est. Demand:</b> 13 A

SERVICE FEEDER SCHEDULE				
1 PHASE, 3W SERVICE PANEL (AMP)	CABLE/CONDUCTORS	CONDUIT	SERVICE GROUND	EQUIPMENT GROUND
100	3 #2	1 1/4" #8	#8	#8
150	3 #10	2" #5	#5	#5
225	3 #40	2 1/2" #2	#2	#4
400	2 SETS OF 3 #3/0	2" EA. #1/0	#3	#3
600	2 SETS OF 3 #350 KCMIL	3" EA. #2/0	#1	#1
3 PHASE, 4W SERVICE PANEL (AMP)	CABLE/CONDUCTORS	CONDUIT	SERVICE GROUND	EQUIPMENT GROUND
400	2 SETS OF 4 #3/0	2 1/2" EA. #1/0	#3	#3
600	2 SETS OF 4 #350 KCMIL	3" EA. #3/0	#1	#1

○ SERVICE FEEDER SCHEDULE  
N.T.S.

**NOTES:**

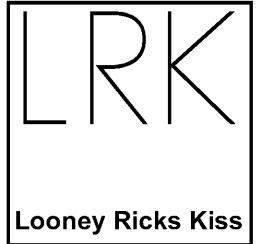
- ALL CABLING, CONDUIT, AND TRANSFORMERS AHEAD OF THE METER GANG SHALL BE BY MLGW.
- METER SOCKETS SHALL BE INSTALLED BY CONTRACTOR. INSTALLATION SHALL BE PER MLGW STANDARDS.
- MULTIPLE METER GANG MAY HAVE INTEGRAL DISCONNECTS.
- SEE FEEDER SCHEDULE FOR WIRE SIZES.
- SEE PANEL SCHEDULES FOR INDIVIDUAL BUILDING UNIT PANELS.



○ RISER DIAGRAM HA  
N.T.S.

CALCULATED LOAD ANALYSIS				
BUILDING HA				
[2 METER BANKS EACH BUILDING]				
<b>1. LIGHTING LOADS</b>				
GENERAL LIGHTING & GENERAL RECEPTACLE LOADS				
Per NEC 2011 Article 220.84				
3907.5 SF	x	3 VA/SF	x	100% = 11722.5 VA
<b>2. SMALL BRANCH AND LAUNDRY CIRCUITS</b>				
SMALL APPLIANCE BRANCH CIRCUIT AND LAUNDRY CIRCUIT				
Circuits per NEC 2011 Article 210.11 @ (1&2)				
12	x	1500 VA	=	18000 VA
<b>3. NAMEPLATE LOADS</b>				
APPLIANCE	=	14380	x	100% = 14380
RANGE	=	26000	x	100% = 26000
DRYER	=	20000	x	100% = 20000
WATER HEATER	=	18000	x	100% = 18000
				<b>TOTAL</b> 78380 VA
<b>4. OTHER PERMANENTLY CONNECTED MOTORS</b>				
MOTOR	=	0	x	100% = 0
<b>5. AIR CONDITIONER OR SPACE HEATING LOAD (LARGER OF THE TWO)</b>				
HVAC	=	38640	x	100% = 38640
				<b>TOTAL</b> 146742.5 VA
<b>DEMAND FACTORS FOR THREE OR MORE MULTIFAMILY DWELLING UNITS:</b>				
3-5	45%			
6-7	40%			
8-10	35%			
				<b>HOUSE PANEL</b> 3000 VA
<b>CALCULATED LOADS x DIVERSITY FACTOR PLUS HOUSE PANEL:</b>				
				<b>287.6 A</b>

Order Plans



Architecture Planning Interiors Research  
50 South B.B. King Boulevard  
Memphis, Tennessee 38103  
Telephone 901 521 1440  
Fax 901 525 2760  
E-mail info@lrk.com

Client:  
**McCormack Baron Salazar**

720 Olive St, Suite 2500  
St. Louis, MO 63101

Issues and Revisions		
Date	Issued / Revised	DOCUMENTS
03/16/2020	50% CONSTRUCTION	DOCUMENTS
05/18/2020	80% CONSTRUCTION	DOCUMENTS
07/13/2020	PERMIT	DOCUMENTS

BUILDING ADDRESSES	
TYPE E.B.	442, 444, 446, 448 BATHURST LANE 324, 296, 298, 330 ISHMAEL PLACE
TYPE H.A.	373, 440 VANCE AVE 315, 364 FOOTIE LANE 303 S DANNY THOMAS BLVD
TYPE L.C.	365, 431 VANCE AVE 315 ISHMAEL PLACE
TYPE L.A.	327 ISHMAEL PLACE 420, 353 FOOTIE LANE 340 S DANNY THOMAS BLVD
TYPE M.A.	402, 428 FOOTIE LANE

©2020 LRK Inc.  
Drawings, written material, and design concepts shall not be used or reproduced in whole or part in any form or format without prior written consent of LRK Inc. Do not scale drawings. Use given dimensions only. If not shown, verify correct dimensions with the Architect. Contractor shall check and verify all dimensions and conditions at job.



LRK Project Number: 01.15100.02

Project Name: South City CNI Phase 4  
Memphis TN

Drawing Name: ELECTRICAL PANEL SCHEDULES - BUILDING H-A

Drawn By: PTH  
Checked By: RJH

HA-E302