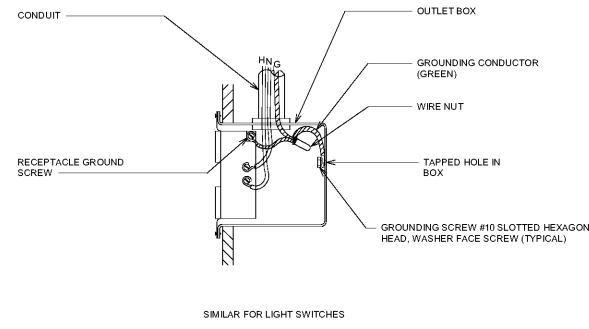


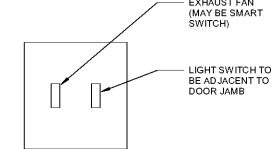
NOTE: COORDINATE DEVICE LOCATION AND MOUNTING HEIGHT WITH ARCHITECTURAL ELEVATIONS.

1 CABLE TV & POWER OUTLET DETAIL  
N.T.S.

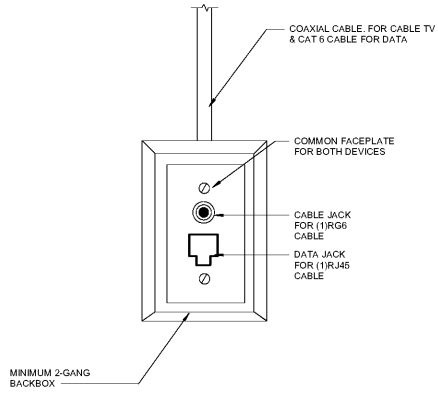


SIMILAR FOR LIGHT SWITCHES

2 RECEPTACLE BONDING DETAIL  
N.T.S.

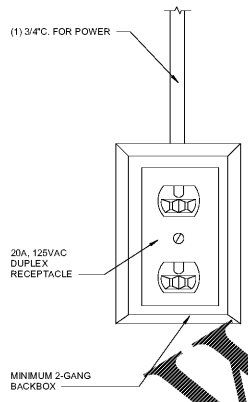


3 BATHROOM WALL SWITCH DETAIL  
N.T.S.

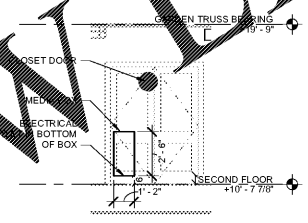


NOTE: COORDINATE DEVICE LOCATION AND MOUNTING HEIGHT WITH ARCHITECTURAL ELEVATIONS.

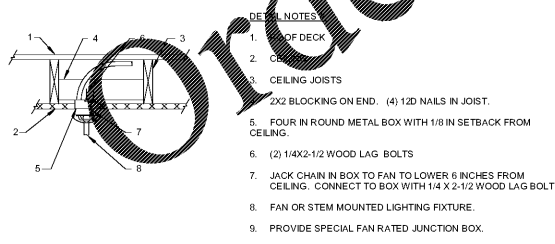
4 CABLE TV & DATA OUTLET DETAIL  
N.T.S.



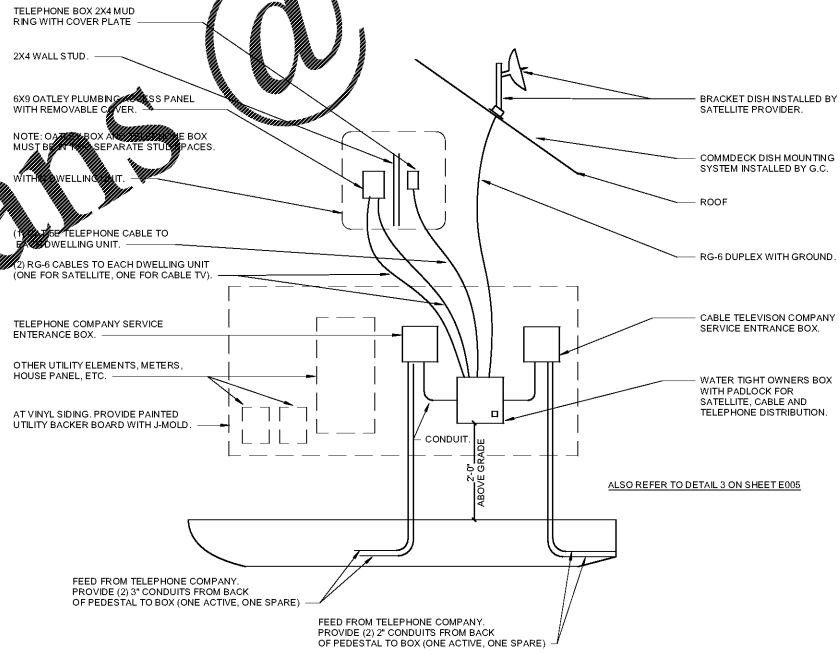
5 POWER OUTLET DETAIL  
N.T.S.



6 TYPICAL MEDIA BOX IN MASTER BEDROOM CLOSET  
1/4\"/>

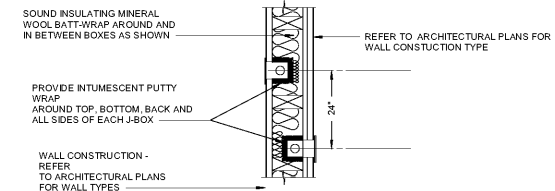


7 FAN MOUNT DETAIL  
N.T.S.



8 SATELLITE/CABLE/TELEPHONE COORDINATION DETAIL  
1/2\"/>

THIS DETAIL IS INTENDED TO SHOW THE SPECIALIZED OFFSET CONDITION REQUIRED AT "BACK-TO-BACK" JUNCTION BOX LOCATIONS IN WOOD STUD WALLS BETWEEN 1 HOUR FIRE RATED WALL OR PARTITION.



9 FIRE WALL PARTITION  
1\"/>

Order Plans @

WWW.DILine.com



Architecture Planning Interiors Research  
50 South B.B. King Boulevard  
Memphis, Tennessee 38103  
Telephone 901 521 1440  
Fax 901 525 2760  
E-mail info@lrk.com

Client:  
**McCormack Baron Salazar**

720 Olive St, Suite 2500  
St. Louis, MO 63101

Issues and Revisions

Issue #	Date	Issued / Revised
1	03/16/2020	50% CONSTRUCTION DOCUMENTS
2	05/18/2020	80% CONSTRUCTION DOCUMENTS
3	07/13/2020	PERMIT

BUILDING ADDRESSES

TYPE G.E.	TYPE H.A.	TYPE L.C.	TYPE L.A.	TYPE M.A.
442, 444, 446, 448 BATHURF LANE	374, 296, 298, 330 ISHMAEL PLACE	365, 431 VANCE AVE	337 ISHMAEL PLACE	402, 426 FOOTE LANE
	373, 440 VANCE AVE	313 BIRWELL PLACE	420, 355 FOOTE LANE	
	316, 364 FOOTE LANE	363 S DANNY THOMAS BLVD	340 S DANNY THOMAS BLVD	

©2020 LRK, Inc.  
Drawings, written material, and design concepts shall not be used or reproduced in whole or part in any form or format without prior written consent of LRK, Inc. Do not scale drawings. Use given dimensions only. If not shown, verify correct dimensions with the Architect. Contractor shall check and verify all dimensions and conditions at job site.



LRK Project Number 01.15100.42

Project Name:  
**South City CNI Phase 4**  
Memphis TN

**ELECTRICAL DETAILS**

Drawn By: RJH  
Checked By: RJH

E004