

DRAWING NOTES

- A. PLEASE REFER TO SHEET E001 FOR PROJECT NOTES, LEGEND, AND ABBREVIATIONS.
- B. FINAL STREET LIGHT LOCATIONS SHALL BE DESIGNED BY MLLW. PLACEMENT SHOWN ON DRAWINGS ARE SUGGESTED LOCATIONS USED FOR SITE PHOTOMETRIC CALCULATIONS.
- C. SEE CIVIL DRAWINGS FOR ELECTRICAL SERVICE FEEDERS FROM UTILITY POLES TO TRANSFORMERS AND FROM TRANSFORMERS TO METERS.



Architecture Planning Interiors Research  
 50 South B.B. King Boulevard  
 Memphis, Tennessee 38103  
 Telephone 901 521 1440  
 Fax 901 525 2760  
 E-mail info@lrk.com

Client:  
**McCormack Baron Salazar**

720 Olive St, Suite 2500  
 St. Louis, MO 63101

Issues and Revisions

Date	Issued / Revised
03/16/2020	50% CONSTRUCTION DOCUMENTS
05/18/2020	80% CONSTRUCTION DOCUMENTS
07/13/2020	PERMIT

BUILDING ADDRESSES

TYPE E.E.	442, 444, 446, 448 BATLIF LANE
TYPE H.A.	324, 226, 228, 330 SHWEL PLACE
TYPE H.A.	374, 440 VANCE AVE
TYPE H.A.	315, 361 FOOTE LANE
TYPE L.C.	383 S DANNY THOMAS BLVD
TYPE L.A.	365, 431 VANCE AVE
TYPE L.A.	313 SHWEL PLACE
TYPE L.A.	327 SHWEL PLACE
TYPE L.A.	420, 501 FOOTE LANE
TYPE M.A.	340 S DANNY THOMAS BLVD
TYPE M.A.	402, 426 FOOTE LANE

©2020 LRK, Inc.  
 Drawings, written material, and design concepts shall not be used or reproduced in whole or part in any form or format without prior written consent of LRK, Inc. Do not scale drawings. Use given dimensions only. If not shown, verify correct dimensions with the Architect. Contractor shall check and verify all dimensions and conditions at job site.

Seal



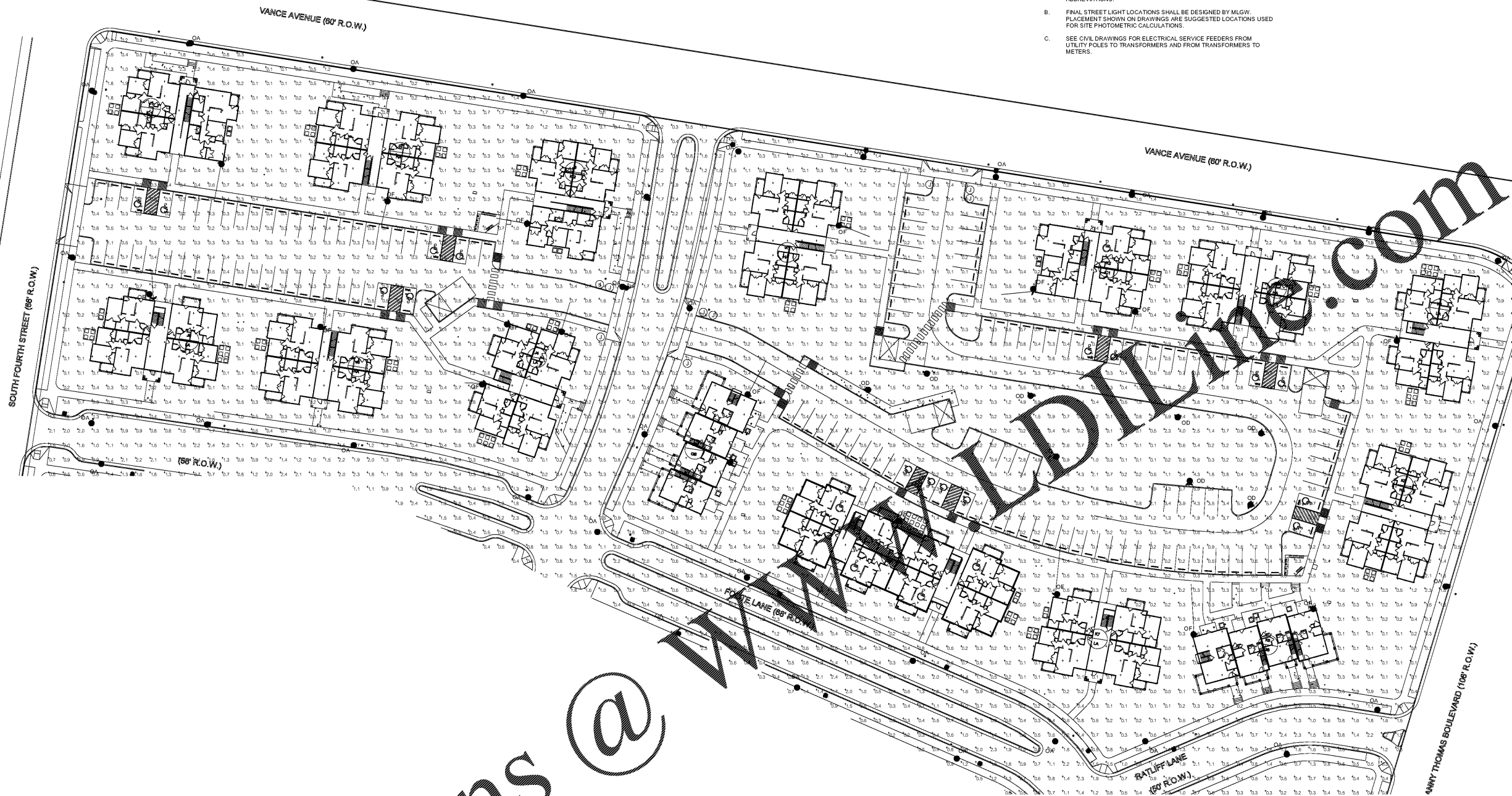
LRK Project Number 01.15100.02

Project Name:  
**South City CNI Phase 4**  
 Memphis TN

Drawing Name:  
**ELECTRICAL SITE PHOTOMETRICS PLAN**

Drawn By: PIH  
 Checked By: RJH

E003



1 ELECTRICAL PHOTOMETRICS PHASE 4  
 1" = 30'-0"

Order Plans @