

SHEARWALL SCHEDULE <sup>(1)</sup>												
MARK	2nd FLOOR					1st FLOOR					REMARKS	
	SHEATHING	NAILING (2)	CHORD (6)	CHORD STRAP CONNECTION (7)	SILL PLATE CONNECTION & SHEAR TRANSFER PLATE (3)	SHEATHING	NAILING (2)	CHORD (6)	CHORD HOLD DOWN	HOLD DOWN ANCHOR BOLT (5)		SILL PLATE ANCHOR BOLT (4)
BLDG. IC	IC-SW1	15/32" OSB	10x @ 6"	2-2x4	CS16 W/20 10d & LPT4 @ 24"	15/32" OSB	10x @ 6"	2-2x4	HDU-5-SDS 2.5	PAB5-24	THD 50500H @ 36" O.C.	-
	IC-SW2	15/32" OSB	10x @ 6"	2-2x4	CMSTC16 (50) 16d SINKERS & LPT4 @ 16"	15/32" OSB	10x @ 4"	3-2x4	HDU-5-SDS 2.5	PAB5-24	THD 50500H @ 24" O.C.	-
	IC-SW3	-	-	-	16d @ 6"	15/32" OSB	10x @ 6"	2-2x4	HDU-4-SDS 2.5	PAB5-24/12	THD 50500H @ 36" O.C.	-
	IC-SW4	15/32" OSB	10x @ 6"	2-2x4	CMSTC16 (50) 16d SINKERS & LPT4 @ 16"	15/32" OSB	10x @ 4"	3-2x4	HDU-5-SDS 2.5	PAB7-24	THD 50500H @ 24" O.C.	-
	IC-SW5	15/32" OSB	10x @ 6"	2-2x4	CMSTC16 (50) 16d SINKERS & LPT4 @ 16"	15/32" OSB	10x @ 4"	3-2x4	HDU-8-SDS 2.5	PAB7-24	THD 50500H @ 24" O.C.	-
	IC-SW6	15/32" OSB	10x @ 6"	2-2x4	CMSTC16 (50) 16d SINKERS & LPT4 @ 16"	15/32" OSB	10x @ 4"	3-2x4	HDU-8-SDS 2.5	PAB7-24	THD 50500H @ 24" O.C.	-
	IC-SW7	15/32" OSB	10x @ 4"	2-2x4	CMSTC16 (50) 16d SINKERS & LPT4 @ 12"	15/32" OSB	10x @ 3"	4-2x4	HDU-14-SDS 2.5	PAB8-24	THD 50500H @ 18" O.C.	-

**SHEARWALL SCHEDULE NOTES:**

- ALL HOLD DOWNS, STRAPS, BOLTS, AND HARDWARE INDICATED ARE SIMPSON STRONG TIE HARDWARE OR EQUAL. ALL NAILS INDICATED ARE COMMON NAILS, U.N.O.
- ALL EDGES OF SHEATHING SHALL BE FULLY BLOCKED WITH FULL DEPTH 2X BLOCKING AND NAILED ACCORDING TO THE SCHEDULE. FIELD NAILING OF SHEATHING SHALL BE AT 6" O.C.
- REFER TO DETAILS 1, 3 & 4/S004 FOR 2ND FLOOR SILL PLATE CONNECTION AND SHEAR TRANSFER CONNECTION AT THE TOP OF THE 1ST FLOOR WALL. SHEAR WALLS THAT ARE ALSO BEARING WALLS WILL REQUIRE BOTH 2ND FLOOR SILL PLATE CONNECTIONS AND SHEAR TRANSFER PLATES.
- A MINIMUM OF 3 SOLE PLATE ANCHORS ARE REQUIRED PER SHEARWALL REGARDLESS OF SPACING INDICATED IN SHEARWALL SCHEDULE.
- REFER TO DETAIL S5004 FOR HOLD DOWN ANCHOR BOLT EMBEDMENT REQUIREMENTS. NOTE ANCHOR BOLTS MUST BE SET IN FOUNDATIONS AS SHOWN. CONTRACTOR SHALL COORDINATE ANCHOR BOLT LOCATIONS WITH FRAMER AND NUMBER OF CHORD STUDS INDICATED PRIOR TO CASTING FOUNDATIONS.
- WHEN THE EDGE OF A SHEARWALL, AS INDICATED ON THE PLANS, IS ADJACENT TO A WINDOW OR DOOR OPENING THE FULL HEIGHT JAMB STUDS INDICATED IN THE HEADER SCHEDULE AND SHOWN IN DETAIL 4/S003 MAY BE COUNTED AS PART OF THE QUANTITY OF CHORD STUDS INDICATED IN THE SHEARWALL SCHEDULE. ADD ADDITIONAL FULL HEIGHT STUDS AS REQUIRED TO EQUAL THE MAXIMUM NUMBER OF CHORD STUDS INDICATED IN THE SHEARWALL SCHEDULE OR THE HEADER SCHEDULE.
- REFER TO DETAIL 6/S004 FOR CHORD STRAP CONSTRUCTION DETAILS AT THE 2ND FLOOR.

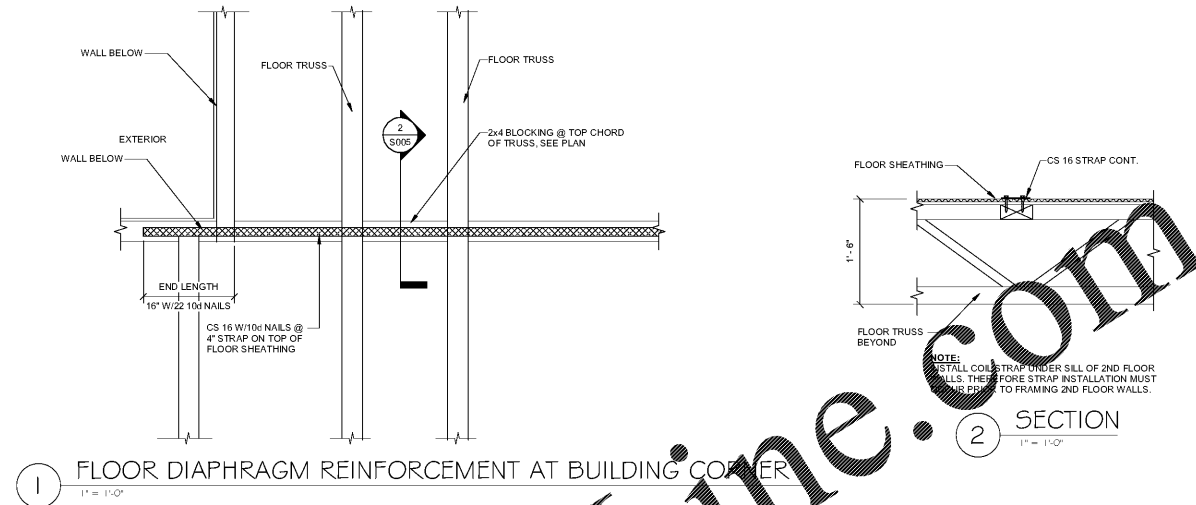
**ABBREVIATIONS:**  
OSB = OSB STRUCTURAL SHEATHING  
SSW = SIMPSON STRONG WALL

SHEARWALL SCHEDULE <sup>(1)</sup>																	
MARK	3rd FLOOR					2nd FLOOR					1st FLOOR	REMARKS					
	SHEATHING	NAILING (2)	CHORD (6)	CHORD STRAP CONNECTION (7)	SILL PLATE CONNECTION & SHEAR TRANSFER PLATE (3)	SHEATHING	NAILING (2)	CHORD (6)	CHORD STRAP CONNECTION (7)	SILL PLATE CONNECTION & SHEAR TRANSFER PLATE (3)	SHEATHING		NAILING (2)	CHORD (6)	CHORD HOLD DOWN	HOLD DOWN ANCHOR BOLT (5)	SILL PLATE ANCHOR BOLT (4)
BLDG. LA	LA-SW1	15/32" OSB	10x @ 6"	2-2x4	CS16 (20) 10d & LPT4 @ 24"	15/32" OSB	10x @ 6"	2-2x4	CS14 (26) 10d	16d @ 6" & LPT4 @ 24"	15/32" OSB	10x @ 6"	3-2x4	HDU-5-SDS 2.5	PAB5-24	THD 50500H @ 36" O.C.	-
	LA-SW2	15/32" OSB	10x @ 4"	2-2x4	CS16 (20) 10d	15/32" OSB	10x @ 4"	2-2x4	CMSTC16 (50) 16d SINKERS & LPT4 @ 16"	16d @ 4" & LPT4 @ 16"	15/32" OSB	10x @ 4"	3-2x4	HDU-8-SDS 2.5	PAB7-24	THD 50500H @ 24" O.C.	-
	LA-SW3	-	-	-	16d @ 6"	15/32" OSB	10x @ 6"	2-2x4	CS16 (20) 10d	16d @ 6" & LPT4 @ 24"	15/32" OSB	10x @ 6"	2-2x4	HDU-5-SDS 2.5	PAB5-24/12	THD 50500H @ 36" O.C.	-
	LA-SW4	15/32" OSB	10x @ 4"	2-2x4	CS16 (20) 10d	15/32" OSB	10x @ 4"	2-2x4	CMSTC16 (50) 16d SINKERS & LPT4 @ 16"	16d @ 4" & LPT4 @ 16"	15/32" OSB	10x @ 4"	3-2x4	HDU-8-SDS 2.5	PAB7-24	THD 50500H @ 24" O.C.	-
	LA-SW5	15/32" OSB	10x @ 4"	2-2x4	CMSTC16 (50) 16d SINKERS & LPT4 @ 16"	15/32" OSB	10x @ 4"	3-2x4	CMSTC14 (16) 16d SINKERS & LPT4 @ 16"	16d @ 4" & LPT4 @ 16"	15/32" OSB	10x @ 4"	3.5"x5.25" PSL	HDU-11-SDS 2.5	PAB8-24	THD 50500H @ 24" O.C.	NOTE 8
BLDG. MA	MA-SW1	15/32" OSB	10x @ 6"	2-2x4	CS16 (20) 10d & LPT4 @ 24"	15/32" OSB	10x @ 6"	3-2x4	CMSTC16 (50) 16d SINKERS & LPT4 @ 16"	16d @ 6" & LPT4 @ 24"	15/32" OSB	10x @ 6"	3-2x4	HDU-8-SDS 2.5	PAB7-24	THD 50500H @ 36" O.C.	-
	MA-SW2	15/32" OSB	10x @ 6"	2-2x4	CS16 (20) 10d	15/32" OSB	10x @ 6"	2-2x4	CMSTC16 (50) 16d SINKERS & LPT4 @ 16"	16d @ 4" & LPT4 @ 16"	15/32" OSB	10x @ 6"	3-2x4	HDU-8-SDS 2.5	PAB7-24	THD 50500H @ 24" O.C.	-
	MA-SW3	-	-	-	16d @ 6"	15/32" OSB	10x @ 6"	2-2x4	CS16 (20) 10d	16d @ 6" & LPT4 @ 24"	15/32" OSB	10x @ 6"	2-2x4	HDU-4-SDS 2.5	PAB5-24/12	THD 50500H @ 36" O.C.	-
	MA-SW4	15/32" OSB	10x @ 6"	2-2x4	CMSTC16 (50) 16d SINKERS & LPT4 @ 16"	15/32" OSB	10x @ 4"	3-2x4	CMSTC14 (16) 16d SINKERS & LPT4 @ 16"	16d @ 4" & LPT4 @ 16"	15/32" OSB	10x @ 3"	3.5"x5.25" PSL	HDU-14-SDS 2.5	PAB8-24	THD 50500H @ 16" O.C.	NOTE 8
	MA-SW5	15/32" OSB	10x @ 6"	2-2x4	CS14 (26) 10d	15/32" OSB	10x @ 4"	3-2x4	CMSTC16 (50) 16d SINKERS & LPT4 @ 16"	16d @ 4" & LPT4 @ 16"	15/32" OSB	10x @ 4"	3.5"x5.25" PSL	HDU-14-SDS 2.5	PAB8-24	THD 50500H @ 24" O.C.	NOTE 8
	MA-SW6	15/32" OSB	10x @ 6"	2-2x4	CS16 (20) 10d	15/32" OSB	10x @ 4"	4-2x4	CMSTC16 (50) 16d SINKERS & LPT4 @ 16"	16d @ 4" & LPT4 @ 16"	15/32" OSB	10x @ 4"	4-2x4	HDU-11-SDS 2.5	PAB8-24	THD 50500H @ 24" O.C.	-

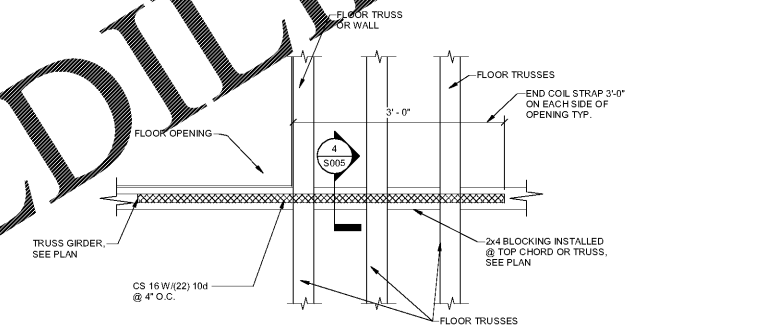
**SHEARWALL SCHEDULE NOTES:**

- ALL HOLD DOWNS, STRAPS, BOLTS, AND HARDWARE INDICATED ARE SIMPSON STRONG TIE HARDWARE OR EQUAL. ALL NAILS INDICATED ARE COMMON NAILS, U.N.O.
- ALL EDGES OF SHEATHING SHALL BE FULLY BLOCKED WITH FULL DEPTH 2X BLOCKING AND NAILED ACCORDING TO THE SCHEDULE. FIELD NAILING OF SHEATHING SHALL BE AT 6" O.C.
- REFER TO DETAILS 1, 3 & 4/S004 FOR 2ND FLOOR SILL PLATE CONNECTION AND SHEAR TRANSFER CONNECTION AT THE TOP OF THE 1ST FLOOR WALL. SHEAR WALLS THAT ARE ALSO BEARING WALLS WILL REQUIRE BOTH 2ND FLOOR SILL PLATE CONNECTIONS AND SHEAR TRANSFER PLATES.
- A MINIMUM OF 3 SOLE PLATE ANCHORS ARE REQUIRED PER SHEARWALL REGARDLESS OF SPACING INDICATED IN SHEARWALL SCHEDULE.
- REFER TO DETAIL S5004 FOR HOLD DOWN ANCHOR BOLT EMBEDMENT REQUIREMENTS. NOTE ANCHOR BOLTS MUST BE SET IN FOUNDATIONS AS SHOWN. CONTRACTOR SHALL COORDINATE ANCHOR BOLT LOCATIONS WITH FRAMER AND NUMBER OF CHORD STUDS INDICATED PRIOR TO CASTING FOUNDATIONS.
- WHEN THE EDGE OF A SHEARWALL, AS INDICATED ON THE PLANS, IS ADJACENT TO A WINDOW OR DOOR OPENING THE FULL HEIGHT JAMB STUDS INDICATED IN THE HEADER SCHEDULE AND SHOWN IN DETAIL 4/S003 MAY BE COUNTED AS PART OF THE QUANTITY OF CHORD STUDS INDICATED IN THE SHEARWALL SCHEDULE. ADD ADDITIONAL FULL HEIGHT STUDS AS REQUIRED TO EQUAL THE MAXIMUM NUMBER OF CHORD STUDS INDICATED IN THE SHEARWALL SCHEDULE OR THE HEADER SCHEDULE.
- REFER TO DETAIL 6/S004 FOR CHORD STRAP CONSTRUCTION DETAILS AT THE 2ND FLOOR.
- 3.5"x5.25" PSL MAY REPLACE JAMB (KING) STUDS INDICATED IN DETAIL 4/S003. JAMB STUDS SHALL REMAIN.

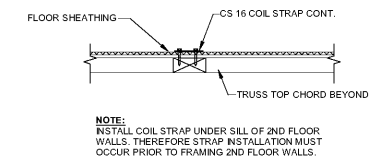
**ABBREVIATIONS:**  
OSB = OSB STRUCTURAL SHEATHING  
SSW = SIMPSON STRONG WALL



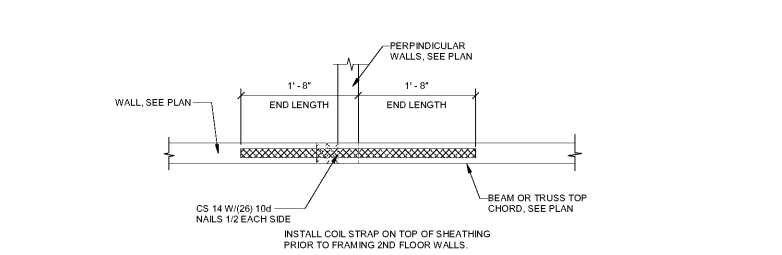
1 FLOOR DIAPHRAGM REINFORCEMENT AT BUILDING CORNER  
1" = 1'-0"



2 FLOOR DIAPHRAGM REINFORCEMENT AT OPENINGS  
1" = 1'-0"



3 BEAM/TRUSS ATTACHMENT REINFORCEMENT  
1" = 1'-0"



4 FLOOR DIAPHRAGM REINFORCEMENT AT OPENINGS  
1" = 1'-0"



5 BEAM/TRUSS ATTACHMENT REINFORCEMENT  
1" = 1'-0"



Architecture Planning Interiors Research  
50 South B.B. King Boulevard  
Memphis, Tennessee 38103  
Telephone 901 521 1440  
Fax 901 525 2760  
E-mail info@lrk.com

Client:  
**McCormack Baron Salazar**

720 Olive St Suite 2500  
St. Louis, MO 63101

**Issues and Revisions**

Date	Issued / Revised
3/16/2020	50% C.D.
5/15/2020	80% C.D.
7/13/2020	Permit Submission

**BUILDING ADDRESSES**

TYPE	ADDRESS
TYPE 0L	442, 444, 446, 448 RATLIFF LANE 274, 276, 278, 280 SHAWNEE PLACE
TYPE 1A	373, 440 VANCE AVE 316, 364 FOOTE LANE 363 S DANNY THOMAS BLVD
TYPE 1C	365, 431 VANCE AVE 313 SHAWNEE PLACE
TYPE 1A	377 SHAWNEE PLACE 420, 503 FOOTE LANE 346 S DANNY THOMAS BLVD
TYPE M.A	402, 428 FOOTE LANE

©2020 LRK Inc.  
Drawings, written material, and design concepts shall not be used or reproduced in whole or part in any form or format without prior written consent of LRK Inc. Do not scale drawings. Use given dimensions only. If not shown, verify correct dimensions with the Architect. Contractor shall check and verify all dimensions and conditions at job site.



LRK Project Number: 01.15100.43

Project Name:  
**South City CNI Phase 4**  
Memphis, TN

Drawing Name:  
**SCHEDULES AND DETAILS**

Drawn By: MAC  
Checked By: KEM

**S005**