

MARK	2nd FLOOR					1st FLOOR					REMARKS	
	SHEATHING	NAILING (2)	CHORD (6)	CHORD STRAP CONNECTION (7)	SILL PLATE CONNECTION & SHEAR TRANSFER PLATE (3)	SHEATHING	NAILING (2)	CHORD (6)	CHORD HOLD DOWN	HOLD DOWN ANCHOR BOLT (5)		SILL PLATE ANCHOR BOLT (4)
GB-SW1	15/32" OSB	10x @ 6"	2-2x4	CS16 (20) 10x	16d @ 6"	15/32" OSB	10x @ 6"	2-2x4	HDU-4-SDS 2.5	PAB5-24	THD 50500H @ 12" O.C.	-
GB-SW2	15/32" OSB	10x @ 3"	2-2x4	CS14 (20) 10x	16d @ 3"	15/32" OSB	10x @ 2"	3-2x4	HDU-8-SDS 2.5	PAB5-24	THD 50500H @ 12" O.C.	-
GB-SW3	15/32" OSB	10x @ 3"	2-2x4	CMSTC16 (50) 16x SINKERS	16d @ 3" & LPT4 @ 12"	15/32" OSB	10x @ 2"	3.5"x7.25" PSL	HDU-14-SDS 7.5	PAB7-24	THD 50500H @ 12" O.C.	-
GB-SW4	15/32" OSB	10x @ 3"	2-2x4	CMSTC16 (50) 16x SINKERS	16d @ 3" & LPT4 @ 12"	15/32" OSB	10x @ 2"	4-2x4	HDU-8-SDS 2.5	PAB7-24	THD 50500H @ 12" O.C.	-
GB-SW4A	15/32" OSB	10x @ 3"	2-2x4	CMSTC16 (50) 16x SINKERS	16d @ 3" & LPT4 @ 12"	15/32" OSB	10x @ 2"	-	HDU-5-SDS 2.5	-	THD 50500H @ 12" O.C.	SEE SECTION 19S401
GB-SW5	15/32" OSB	10x @ 3"	2-2x4	CMSTC16 (50) 16x SINKERS	16d @ 3"	15/32" OSB	10x @ 2"	3-2x4	HDU-8-SDS 7.5	PAB5-24	THD 50500H @ 12" O.C.	-
GB-SW6	15/32" OSB	10x @ 2"	2-2x4	CMSTC16 (50) 16x SINKERS	16d @ 2"	15/32" OSB	10x @ 2"	3.5"x7.25" PSL	HDU-11-SDS 7.5	PAB7-24	THD 50500H @ 12" O.C.	-
GB-SW7	15/32" OSB	10x @ 2"	2-2x4	CS22 (50) 16x SINKERS	16d @ 2"	15/32" OSB	10x @ 2"	2-2x4	HDU-4-SDS 2.5	PAB5-24	THD 50500H @ 12" O.C.	-

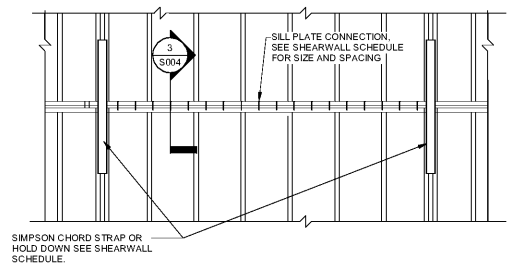
SHEARWALL SCHEDULE NOTES:
 1) ALL HOLD DOWNS, STRAPS, BOLTS, AND HARDWARE INDICATED ARE SIMPSON STRONG TIE HARDWARE OR EQUAL. ALL NAILS INDICATED ARE COMMON NAILS, UNLESS NOTED OTHERWISE.
 2) ALL EDGES OF SHEATHING SHALL BE FULLY BLOCKED WITH FULL DEPTH 2X BLOCKING AND NAILED ACCORDING TO THE SCHEDULE. FIELD NAILING OF SHEATHING SHALL BE AT 6" O.C.
 3) REFER TO DETAILS 1, 3 & 4S004 FOR 2ND FLOOR SILL PLATE CONNECTION AND SHEAR TRANSFER CONNECTION AT THE TOP OF THE 1ST FLOOR WALL. SHEAR WALLS THAT ARE ALSO BEARING WALLS WILL REQUIRE BOTH 2ND FLOOR SILL PLATE CONNECTIONS AND SHEAR TRANSFER PLATES.
 4) A MINIMUM OF 3 SOLE PLATE ANCHORS ARE REQUIRED PER SHEARWALL REGARDLESS OF SPACING INDICATED IN SHEARWALL SCHEDULE.
 5) REFER TO DETAIL 5S004 FOR HOLD DOWN ANCHOR BOLT EMBEDMENT REQUIREMENTS. NOTE ANCHOR BOLTS MUST BE SET IN FOUNDATIONS AS SHOWN. CONTRACTOR SHALL COORDINATE ANCHOR BOLT LOCATIONS WITH FRAMER AND NUMBER OF CHORD STUDS INDICATED PRIOR TO CASTING FOUNDATIONS.
 6) WHEN THE EDGE OF A SHEARWALL, AS INDICATED ON THE PLANS, IS ADJACENT TO A WINDOW OR DOOR OPENING THE FULL HEIGHT JAMB STUDS INDICATED IN DETAIL 4S003 MAY BE COUNTED AS PART OF THE QUANTITY OF CHORD STUDS INDICATED IN THE SHEARWALL SCHEDULE. ADD ADDITIONAL FULL HEIGHT STUDS AS REQUIRED TO EQUAL THE MAXIMUM NUMBER OF CHORD STUDS INDICATED IN THE SHEARWALL SCHEDULE OR THE HEADER SCHEDULE.
 7) REFER TO DETAIL 6S004 FOR CHORD STRAP CONSTRUCTION DETAILS AT THE 2ND FLOOR.

ABBREVIATIONS:
 OSB = OSB STRUCTURAL SHEATHING
 SSW = SIMPSON STRONG WALL

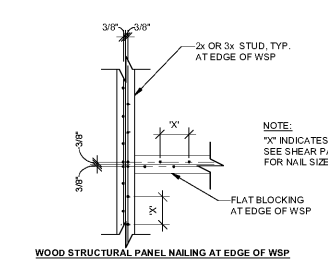
MARK	2nd FLOOR					1st FLOOR					REMARKS	
	SHEATHING	NAILING (2)	CHORD (6)	CHORD STRAP CONNECTION (7)	SILL PLATE CONNECTION & SHEAR TRANSFER PLATE (3)	SHEATHING	NAILING (2)	CHORD (6)	CHORD HOLD DOWN	HOLD DOWN ANCHOR BOLT (5)		SILL PLATE ANCHOR BOLT (4)
HA-SW1	15/32" OSB	10x @ 6"	2-2x4	CS16 (20) 10x	16d @ 6" & LPT4 @ 24"	15/32" OSB	10x @ 6"	2-2x4	HDU-4-SDS 2.5	PAB5-24	THD 50500H @ 36" O.C.	-
HA-SW2	15/32" OSB	10x @ 6"	2-2x4	CMSTC16 (50) 16x SINKERS	16d @ 6" & LPT4 @ 24"	15/32" OSB	10x @ 6"	2-2x4	HDU-5-SDS 2.5	PAB5-24	THD 50500H @ 36" O.C.	-
HA-SW3	15/32" OSB	10x @ 6"	2-2x4	CS16 (20) 10x	16d @ 6" & LPT4 @ 24"	15/32" OSB	10x @ 6"	2-2x4	HDU-4-SDS 2.5	PAB5-24	THD 50500H @ 36" O.C.	-
HA-SW4	-	-	-	-	16d @ 6"	15/32" OSB	10x @ 6"	2-2x4	HDU-4-SDS 2.5	PAB5-24	THD 50500H @ 36" O.C.	-
HA-SW5	15/32" OSB	10x @ 6"	2-2x4	CS16 (20) 10x	16d @ 6" & LPT4 @ 24"	15/32" OSB	10x @ 6"	2-2x4	HDU-4-SDS 2.5	PAB5-24	THD 50500H @ 36" O.C.	-
HA-SW6	15/32" OSB	10x @ 6"	2-2x4	CMSTC16 (50) 16x SINKERS	16d @ 6" & LPT4 @ 24"	15/32" OSB	10x @ 3"	3-2x4	HDU-8-SDS 2.5	PAB7-24	THD 50500H @ 16" O.C.	-
HA-SW7	-	-	-	-	-	-	-	-	-	-	-	-
HA-SW8	-	-	-	-	-	-	-	-	-	-	-	-
HA-SW9	-	-	-	-	-	-	-	-	-	-	-	-

SHEARWALL SCHEDULE NOTES:
 1) ALL HOLD DOWNS, STRAPS, BOLTS, AND HARDWARE INDICATED ARE SIMPSON STRONG TIE HARDWARE OR EQUAL. ALL NAILS INDICATED ARE COMMON NAILS, UNLESS NOTED OTHERWISE.
 2) ALL EDGES OF SHEATHING SHALL BE FULLY BLOCKED WITH FULL DEPTH 2X BLOCKING AND NAILED ACCORDING TO THE SCHEDULE. FIELD NAILING OF SHEATHING SHALL BE AT 6" O.C.
 3) REFER TO DETAILS 1, 3 & 4S004 FOR 2ND FLOOR SILL PLATE CONNECTION AND SHEAR TRANSFER CONNECTION AT THE TOP OF THE 1ST FLOOR WALL. SHEAR WALLS THAT ARE ALSO BEARING WALLS WILL REQUIRE BOTH 2ND FLOOR SILL PLATE CONNECTIONS AND SHEAR TRANSFER PLATES.
 4) A MINIMUM OF 3 SOLE PLATE ANCHORS ARE REQUIRED PER SHEARWALL REGARDLESS OF SPACING INDICATED IN SHEARWALL SCHEDULE.
 5) REFER TO DETAIL 5S004 FOR HOLD DOWN ANCHOR BOLT EMBEDMENT REQUIREMENTS. NOTE ANCHOR BOLTS MUST BE SET IN FOUNDATIONS AS SHOWN. CONTRACTOR SHALL COORDINATE ANCHOR BOLT LOCATIONS WITH FRAMER AND NUMBER OF CHORD STUDS INDICATED PRIOR TO CASTING FOUNDATIONS.
 6) WHEN THE EDGE OF A SHEARWALL, AS INDICATED ON THE PLANS, IS ADJACENT TO A WINDOW OR DOOR OPENING THE FULL HEIGHT JAMB STUDS INDICATED IN DETAIL 4S003 MAY BE COUNTED AS PART OF THE QUANTITY OF CHORD STUDS INDICATED IN THE SHEARWALL SCHEDULE. ADD ADDITIONAL FULL HEIGHT STUDS AS REQUIRED TO EQUAL THE MAXIMUM NUMBER OF CHORD STUDS INDICATED IN THE SHEARWALL SCHEDULE OR THE HEADER SCHEDULE.
 7) REFER TO DETAIL 6S004 FOR CHORD STRAP CONSTRUCTION DETAILS AT THE 2ND FLOOR.

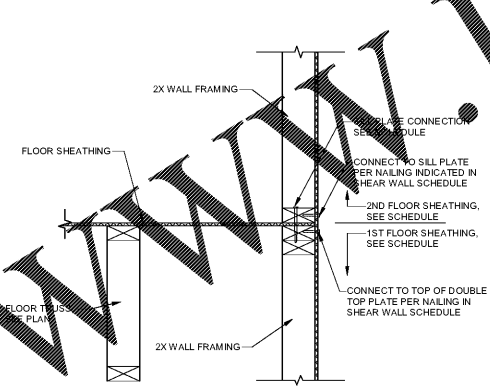
ABBREVIATIONS:
 OSB = OSB STRUCTURAL SHEATHING
 SSW = SIMPSON STRONG WALL



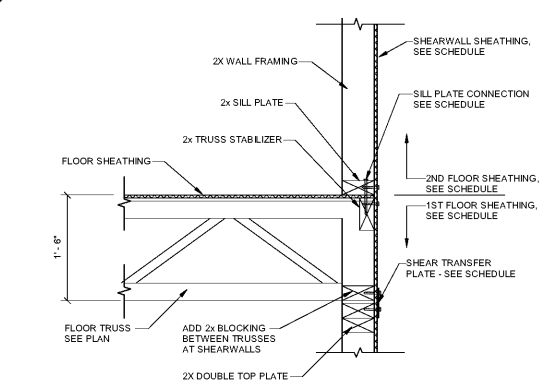
1A SHEARWALL ELEVATION @ NON LOAD-BEARING
1/2" = 1'-0"



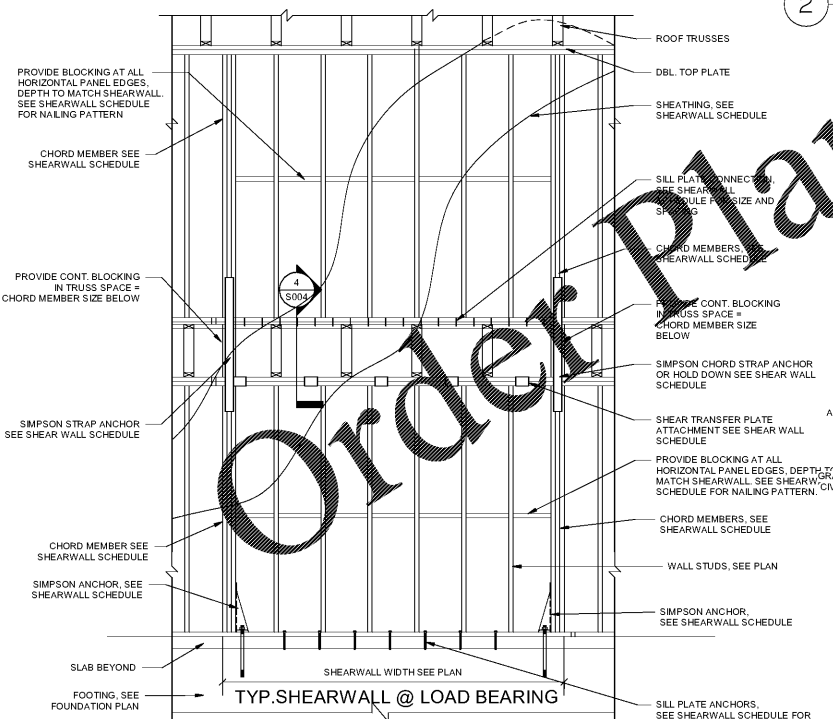
2 DETAIL WOOD STRUCTURAL PANEL NAILING AT EDGE OF WSP
1" = 1'-0"



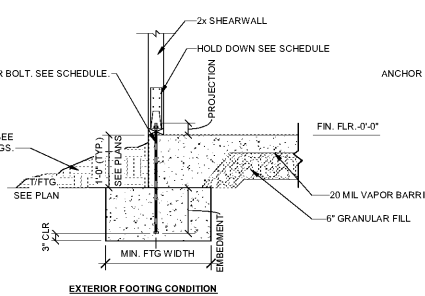
3 SHEARWALL SILL ANCHORAGE AT NON-BEARING WALL
1" = 1'-0"



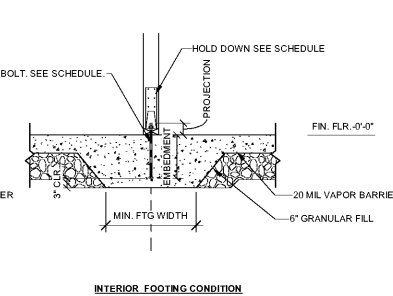
4 SHEARWALL SILL CONNECTION AT BEARING WALL
1" = 1'-0"



1 TYP. SHEARWALL @ LOAD BEARING
1/2" = 1'-0"



5 HOLD DOWN ANCHORAGE DETAIL
3/4" = 1'-0"



6 HOLD DOWN ANCHORAGE DETAIL
3/4" = 1'-0"

ANCHOR BOLT	TOTAL LENGTH	PROJECTION	EMBEDMENT	MIN. FTG. WIDTH
PAB5-24	24"	5"	7"	18"
PAB5-12	12"	5"	7"	18"
PAB7-24	24"	3 1/2"	8 1/2"	26"
PAB7-18	12"	3 1/2"	8 1/2"	26"
PAB8-24	24"	7 1/2"	10 1/2"	32"

STRAP	END LENGTH	TOTAL @ BEARING WALL (MIN.)	TOTAL @ NON-LOAD BEARING WALL (MIN.)
CS 16	11"	45 1/2"	27 1/4"
CS 14	15"	53 1/4"	35 1/4"
CMSTC 16	20"	63 1/4"	45 1/4"
CMSTC 14	30"	83 1/4"	65 1/4"

Order Plans @

WWW.LDILLING.COM



Architecture Planning Interiors Research
 50 South B.B. King Boulevard
 Memphis, Tennessee 38103
 Telephone 901 521 1440
 Fax 901 525 2760
 E-mail info@lrk.com

Client:
McCormack Baron Salazar

720 Olive St Suite 2500
 St. Louis, MO 63101

Issues and Revisions

Date	Issued / Revised
3/16/2020	50% C.D.
5/15/2020	80% C.D.
7/13/2020	Permit Submission

BUILDING ADDRESSES

TYPE G.E.	ADDRESS
TYPE G.E.	442, 444, 446, 448 BATHURST LANE 224, 226, 228, 230 SHAWNEE PLACE
TYPE H.A.	373, 400 VANCE AVE 315, 364 FOOTE LANE 553 S DANNY THOMAS BLVD
TYPE L.C.	365, 431 VANCE AVE 315 SHAWNEE PLACE
TYPE L.A.	377 SHAWNEE PLACE 420, 525 FOOTE LANE 340 S DANNY THOMAS BLVD
TYPE M.A.	402, 426 FOOTE LANE

©2020 LRK Inc.
 Drawings, written material, and design concepts shall not be used or reproduced in whole or part in any form or format without prior written consent of LRK Inc. Do not scale drawings. Use given dimensions only. If not shown, verify correct dimensions with the Architect. Contractor shall check and verify all dimensions and conditions at job site.



LRK Project Number: 01.15100.03

Project Name:
South City CNI Phase 4
 Memphis, TN

Drawing Name:
SHEARWALL SCHEDULE AND DETAILS

Drawn By: MAC
 Checked By: KEM

S004