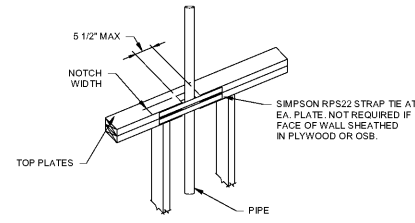
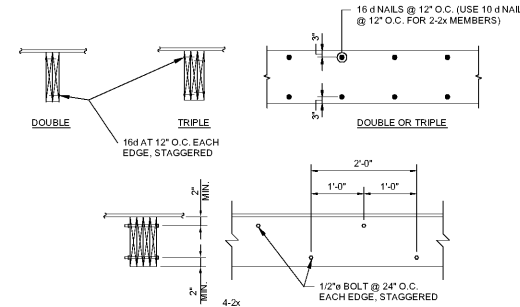


1 TYPICAL DBL. TOP PLATE SPLICE DETAIL
NOT TO SCALE



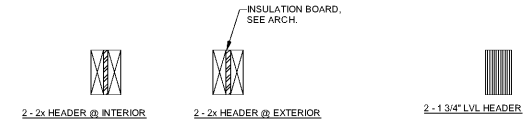
- NOTES:
1. PROVIDE STRAP WHEN NOTCH WIDTH IS BETWEEN: 1 3/4" TO 2 1/2".
 2. NOTCHES GREATER THAN 2 1/2" ARE NOT PERMITTED.

2 NOTCHING & HOLES IN TOP PLATES
NOT TO SCALE



- NOTES:
1. APPLICABLE TO LVL & SAWN LUMBER BEAMS AND HEADERS.
 2. USE DETAILS AS SHOWN FOR MEMBERS UP TO 12" DEEP. FOR DEEPER MEMBER PROVIDE ONE ADDITIONAL ROW OF NAILS @ CENTERLINE OF MEMBER.
 3. FOR 3 PIECE MEMBERS, THE NAILING SPECIFIED IS FROM EACH SIDE.
 4. FOR LVL MEMBERS FOLLOW STRICTER REQUIREMENTS OF THIS DETAIL OR THE MANUFACTURER'S REQUIREMENTS.
 5. PROVIDE SPACERS BETWEEN PILES TO CREATE OVERALL WALL DIMENSIONS FOR 4" AND 6" NOMINAL WALLS.

3 TYP. BUILT-UP BEAM DETAIL
NOT TO SCALE



- NOTES:
1. SHEATHING SHALL BE INSTALLED WHERE 4x8 SHEET IS INSTALLED PERPENDICULAR TO TRUSS/JOISTS & BE INSTALLED IN RUNNING BOND PATTERN.
 2. PANELS SHALL HAVE A MINIMUM OF A 3 SPAN CONDITION.
 3. WSP-3/4" STURD-FLOOR, TONGUE AND GROOVE LONG EDGES, CONFORMING TO VOLUNTARY PRODUCT STANDARD PS 1, VOLUNTARY PRODUCT STANDARD PS 2 OR APA PRP-108 PERFORMANCE STANDARD.
 4. NAILS: 8d COMMON, RING OR SPIRAL SHANK, FULL HEAD. EDGE NAIL: @ 6" O.C. FIELD NAIL: @ 12" O.C.

4 TYP. FLOOR DIAPHRAGM DETAIL
NOT TO SCALE

HEADER SCHEDULE FOR EXTERIOR WALLS 2x4 STUDS
(UNLESS NOTED OTHERWISE)

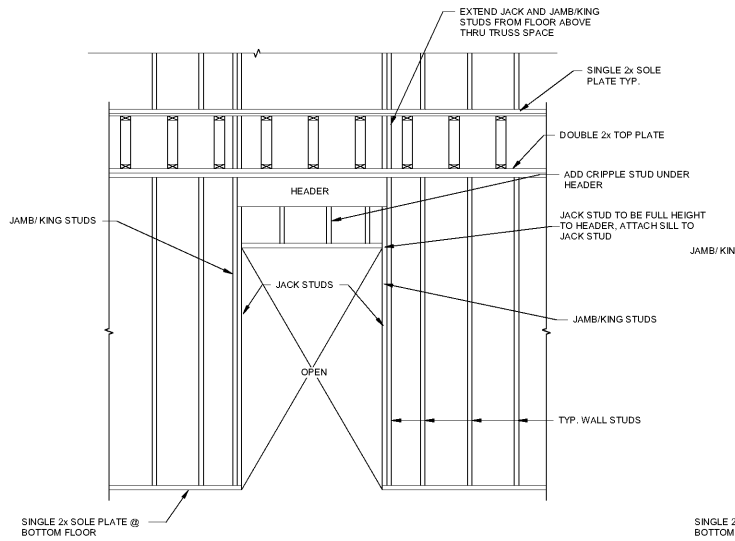
| MARK | ROUGH OPENING | 3rd FLR. BLDGS. LA, MA 2nd FLR. BLDGS. GB, HA, IC | | | 2nd FLR. BLDGS. LA, MA 1st FLR. BLDGS. GB, HA, IC | | | 1st FLR. BLDGS. LA, MA | | |
|------|----------------|--|-------|-------|--|-------|-------|------------------------|-------|-------|
| | | HEADER | JACK | JAMB | HEADER | JACK | JAMB | HEADER | JACK | JAMB |
| - | 0'-0" TO 3'-4" | 2-2x6 | 1-2x4 | 1-2x4 | 2-2x6 | 1-2x4 | 1-2x4 | (2) 1-3/4"x7-1/4" LVL | 2-2x4 | 2-2x4 |
| - | 3'-6" TO 5'-3" | 2-2x10 | 2-2x4 | 2-2x4 | (2) 1-3/4"x7-1/4" LVL | 2-2x4 | 2-2x4 | (2) 1-3/4"x9-1/4" LVL | 2-2x4 | 2-2x4 |
| - | 5'-4" TO 7'-0" | (2) 1-3/4"x7-1/4" LVL | 2-2x4 | 2-2x4 | (2) 1-3/4"x9-1/4" LVL | 2-2x4 | 2-2x4 | (2) 1-3/4"x11-1/4" LVL | 3-2x4 | 2-2x4 |

NOTE: AT 2x6 WALL PROVIDE THE SAME HEADER SIZE WITH AN ADDITIONAL PLY. JACK AND JAMB/KING STUDS REMAIN THE SAME QUANTITY BUT ARE 2x6 INSTEAD OF 2x4.

HEADER SCHEDULE FOR INTERIOR 2x4 BEARING WALLS
(UNLESS NOTED OTHERWISE)

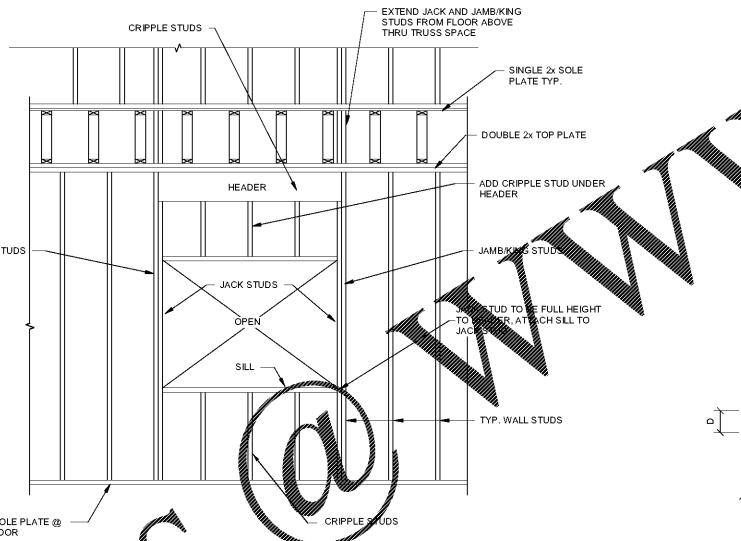
| MARK | ROUGH OPENING | 3rd FLR. BLDGS. LA, MA 2nd FLR. BLDGS. GB, HA, IC | | | 2nd FLR. BLDGS. LA, MA 1st FLR. BLDGS. GB, HA, IC | | | 1st FLR. BLDGS. LA, MA | | |
|------|----------------|--|-------|-------|--|-------|-------|------------------------|-------|-------|
| | | HEADER | JACK | JAMB | HEADER | JACK | JAMB | HEADER | JACK | JAMB |
| - | 0'-0" TO 3'-4" | 2-2x6 | 1-2x4 | 1-2x4 | 2-2x6 | 1-2x4 | 1-2x4 | (2) 1-3/4"x7-1/4" LVL | 2-2x4 | 1-2x4 |
| - | 3'-4" TO 5'-3" | 2-2x10 | 2-2x4 | 1-2x4 | (2) 1-3/4"x7-1/4" LVL | 2-2x4 | 1-2x4 | (2) 1-3/4"x9-1/4" LVL | 2-2x4 | 1-2x4 |

NOTE: AT 2x6 WALL PROVIDE THE SAME HEADER SIZE WITH AN ADDITIONAL PLY. JACK AND JAMB/KING STUDS REMAIN THE SAME QUANTITY BUT ARE 2x6 INSTEAD OF 2x4.



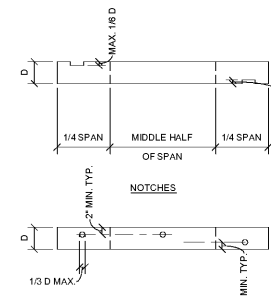
- NOTES:
1. SEE WALL LEGENDS ON EACH PLAN FOR STUD SIZE AND SPACING.
 2. SEE HEADER SCHEDULE FOR HEADER, JACK AND JAMB SIZES AND QUANTITIES.
 3. TRUSSES SHOWN PERPENDICULAR, CONT. JACK AND JAMB STUDS THRU TRUSS SPACE WHEN TRUSSES ARE PARALLEL. EXTEND JAMB AND JACK STUDS TO FOUNDATION FOR OPENINGS THAT DO NOT LINE UP OR ONLY OCCUR ON ONE LEVEL. TRUSS SPACING SHALL MATCH STUD SPACING AS MUCH AS POSSIBLE. THE ABOVE DETAIL IS DIAGRAMMATIC.
 4. EXTEND JAMB AND JACK STUDS TO FOUNDATION FOR OPENINGS THAT DO NOT LINE UP OR ONLY OCCUR ON ONE LEVEL. TRUSS SPACING SHALL MATCH STUD SPACING AS MUCH AS POSSIBLE. THE ABOVE DETAIL IS DIAGRAMMATIC.

5 WOOD FRAMING FOR DOOR AND WALL OPENINGS
NOT TO SCALE



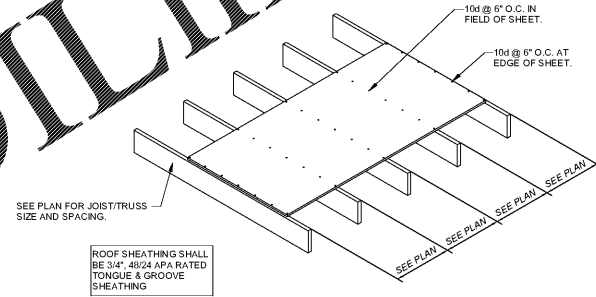
- NOTES:
1. NOTES: SEE EACH PLAN FOR STUD SIZE AND SPACING.
 2. SEE HEADER SCHEDULE FOR HEADER, JACK AND JAMB SIZES AND QUANTITIES.
 3. TRUSSES SHOWN PERPENDICULAR, CONT. JACK AND JAMB STUDS THRU TRUSS SPACE WHEN TRUSSES ARE PARALLEL. PROVIDE 3-2x6 SILL FOR ROUGH OPENINGS UP TO 9'-0" WIDE. PROVIDE 2-2x4 FOR ROUGH OPENINGS LESS THAN 6'-0" AND 3-2x4 SILL FOR OPENINGS UP TO 9'-0" FOR 4" NOMINAL WALLS. EXTEND JAMB AND JACK STUDS TO FOUNDATION FOR OPENINGS THAT DO NOT LINE UP OR ONLY OCCUR ON ONE LEVEL. TRUSS SPACING SHALL MATCH STUD SPACING AS MUCH AS POSSIBLE. THE ABOVE DETAIL IS DIAGRAMMATIC.

6 WOOD FRAMING FOR WALL OPENINGS
NOT TO SCALE



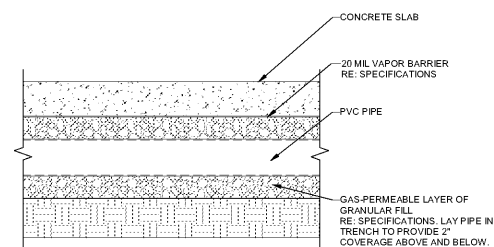
- NOTES:
1. THE CLEAR SPACING BETWEEN NOTCHES AND/OR BOREHOLES SHALL BE AT LEAST 12" HORIZONTALLY.
 2. NOTCHES AND HOLES OTHER THAN SHOWN SHALL BE APPROVED BY THE ENGINEER.
 3. SEE THE WOOD TRUSSES MANUFACTURER'S INSTALLATION INFORMATION FOR HOLES ALLOWED IN WOOD TRUSSES.

7 NOTCHING & HOLES IN WOOD JOISTS
NOT TO SCALE

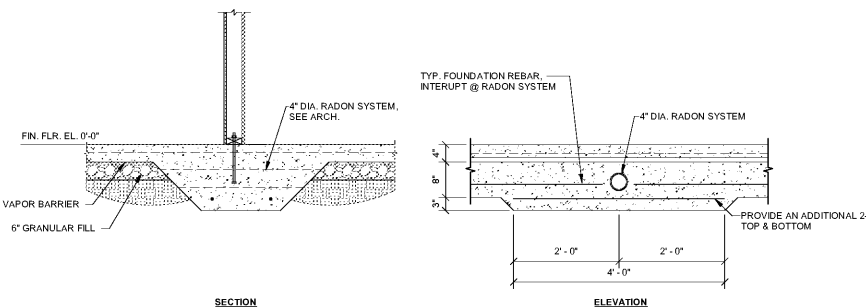


- NOTES:
1. SHEATHING SHALL BE INSTALLED WHERE 4x8 SHEET IS INSTALLED PERPENDICULAR TO TRUSS/JOISTS & BE INSTALLED IN RUNNING BOND PATTERN.
 2. PANELS SHALL HAVE A MINIMUM OF A 3 SPAN CONDITION.
 3. WOOD STRUCTURAL PANEL SHEATHING: VOLUNTARY PRODUCT STANDARD PS 1, VOLUNTARY PRODUCT STANDARD PS 2 OR APA PRP-108 PERFORMANCE STANDARD.
 4. NAILS: 8d COMMON, RING OR SPIRAL SHANK, FULL HEAD. EDGE NAIL: @ 6" O.C. FIELD NAIL: @ 12" O.C.

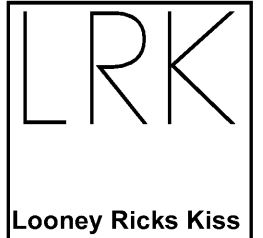
8 TYP. ROOF DIAPHRAGM DETAIL
NOT TO SCALE



9 RADON CONTROL SYSTEM DETAIL
1/2" = 1'-0"



10 RADON SYSTEM AT FTG. DETAIL
3/4" = 1'-0"



Architecture Planning Interiors Research
50 South B.B. King Boulevard
Memphis, Tennessee 38103
Telephone 901.521.1440
Fax 901.525.2760
E-mail info@lrk.com

Client:
McCormack Baron Salazar

720 Olive St Suite 2500
St. Louis, MO 63101

Issues and Revisions

| Date | Issued / Revised |
|-----------|-------------------|
| 3/16/2020 | 50% C.D. |
| 5/15/2020 | 80% C.D. |
| 7/13/2020 | Permit Submission |

BUILDING ADDRESSES

| TYPE GB | TYPE HA | TYPE LC | TYPE LA | TYPE MA |
|----------------------------------|-------------------------|--------------------|-------------------------|---------------------|
| 442, 444, 446, 448 BATHURST LANE | 373, 440 WANCE AVE | 365, 431 WANCE AVE | 377 SHWAEI PLACE | 402, 426 FOOTE LANE |
| 224, 226, 228, 230 SHWAEI PLACE | 315, 364 FOOTE LANE | 315 SHWAEI PLACE | 420, 525 FOOTE LANE | |
| | 533 S DANNY THOMAS BLVD | 325 SHWAEI PLACE | 340 S DANNY THOMAS BLVD | |

©2020 LRK Inc.
Drawings, written material, and design concepts shall not be used or reproduced in whole or part in any form or format without prior written consent of LRK Inc. Do not scale drawings. Use given dimensions only. If not shown, verify correct dimensions with the Architect. Contractor shall check and verify all dimensions and conditions at job site.

Seal



LRK Project Number: 01.15100.43

Project Name:
South City CNI Phase 4
Memphis, TN

SECTIONS AND DETAILS

Drawn By: MAC
Checked By: KEM

S003