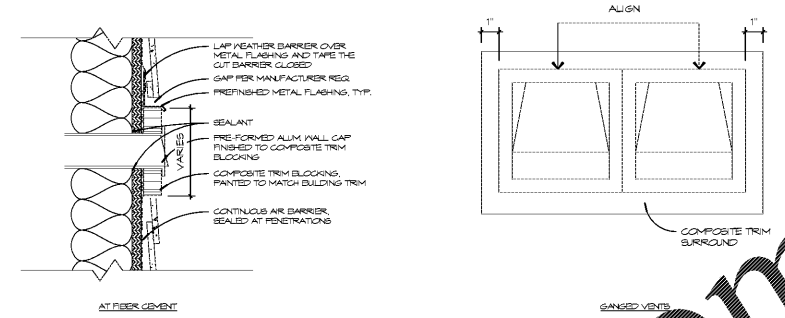
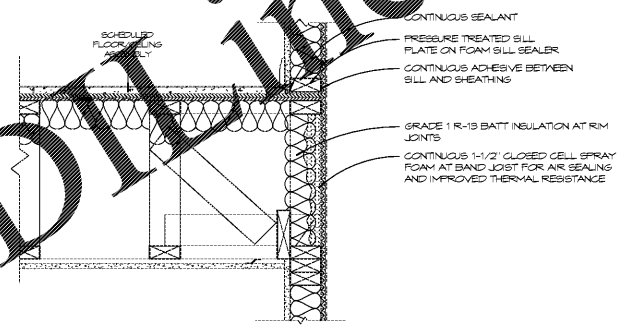


Order Plans @ www.LDinline.com

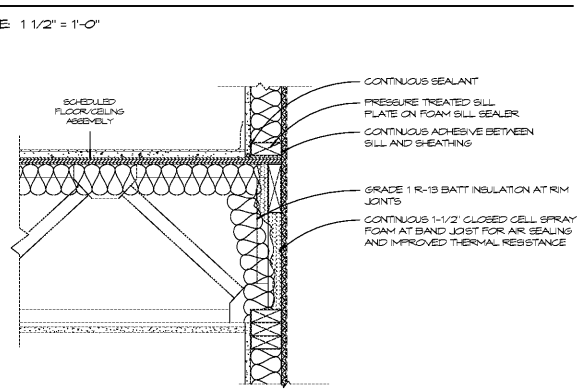


- NOTES
1. GENERIC CONDITION DEPICTED. APPLY FLASHING AND SEALANT CONCEPT TO ALL EXTERIOR PENETRATIONS INCLUDING CONDIT. PIPING, EXHAUST DUCTS, HOSE BIBS, CONDENSATE LINES, ELECTRICAL BOXES.
 2. SEAMS IN AIR BARRIER TO BE SINGLE-STYLE LAPPED FOR POSITIVE DRAINAGE AT ALL SEAMS. APPLY ADHESIVE TAPE AND BACK-ROLL TO ELIMINATE FISHMOUTHS AND GAPS.
 3. ALIGN ALL VENTS VERTICALLY OR HORIZONTALLY. GANG TOGETHER WHENEVER POSSIBLE AND TRIM WITH COMPOSITE BLOCKING.

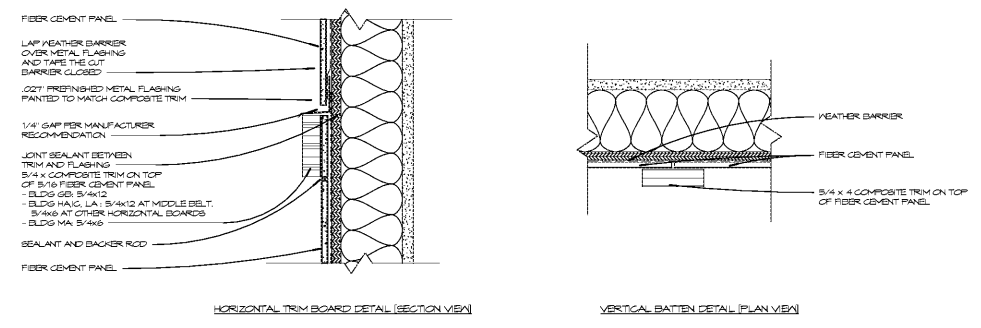
11 EXT PENETRATION DETAILS
SCALE: 3" = 1'-0"



17 TRUSS FRAMING AT EXT WALL, PARALLEL
SCALE: 1 1/2" = 1'-0"



23 TRUSS FRAMING AT EXT WALL, PERPENDICULAR
SCALE: 1 1/2" = 1'-0"



27 COMPOSITE TRIM DETAILS AT FIBER CEMENT PANEL
SCALE: 3" = 1'-0"



Architecture Planning Interiors Research
50 South B.B. King Boulevard
Memphis, Tennessee 38103
Telephone 901 521 1440
Fax 901 525 2760
E-mail info@lrk.com

Client:
McCormack Baron Salazar

720 Olive St Suite 2500
St. Louis, MO 63101

Issues and Revisions

Date	Issued / Revised
3/16/2020	50% CONSTRUCTION DOCS
5/18/2020	80% CONSTRUCTION DOCS
7/13/2020	PERMIT SUBMISSION

BUILDING ADDRESSES

TYPE G-2	342, 444, 446, 448 RATLIFF LANE
TYPE G-2	324, 236, 238, 330 ISHAMEL PLACE
TYPE G-1A	378, 448 VANCE AVE
TYPE G-1A	318, 304 FOOT LANE
TYPE G-1A	328 S DANNY THOMAS BLVD
TYPE G-1C	368, 491 VANCE AVE
TYPE G-1A	378 ISHAMEL PLACE
TYPE G-1A	321 ISHAMEL PLACE
TYPE G-1A	400, 390 FOOT LANE
TYPE G-1A	318 S DANNY THOMAS BLVD
TYPE G-1A	402, 406 FOOT LANE

©2020 LRK Inc.
Drawings, written material, and design concepts shall not be used or reproduced in whole or part in any form or format without prior written consent of LRK Inc. Do not scale drawings. Use given dimensions only. If not shown, verify correct dimensions with the Architect. Contractor shall check and verify all dimensions and conditions at job site.

Seal



LRK Project Number: 01.15100.43

Project Name:
South City CNI Phase 4
Memphis TN

Drawing Name:
WALL DETAILS

Drawn By: ADB
Checked By: HJU

A504