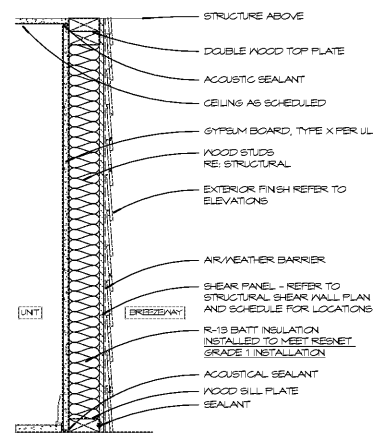


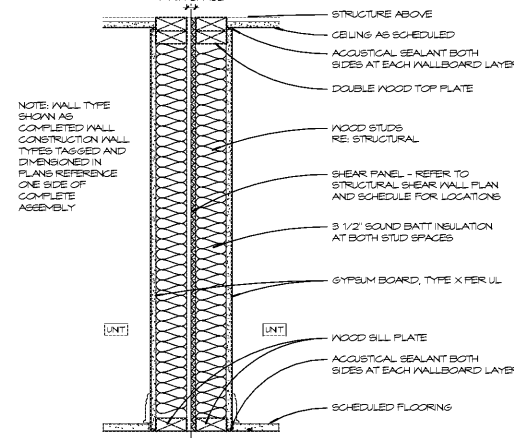
WALL TYPE	FIRE RATINGS	SOUND RATINGS			
LABEL	STUD SIZE	RATING	SOURCE	RATING	SOURCE
A1	2x4	NA	-	NA	-
A2	2x6	NA	-	NA	-
A3	2x4	NA	-	NA	-

A INTERIOR NON-BEARING WALL PARTITION



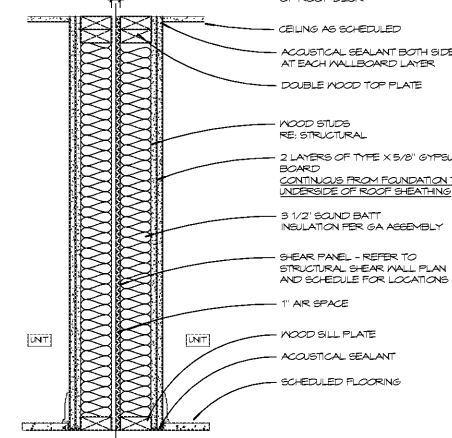
FIRE RATINGS	SOUND RATINGS		
RATING	SOURCE	RATING	SOURCE
1 HR	US56	NA	-

B EXTERIOR BREEZEWAY WALL PARTITION



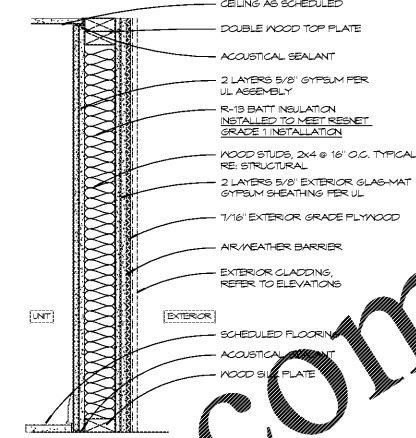
FIRE RATINGS	SOUND RATINGS		
RATING	SOURCE	RATING	SOURCE
1 HR	US41	ST	RAL TL 75-85

C INTERIOR UNIT DEMISING WALL PARTITION



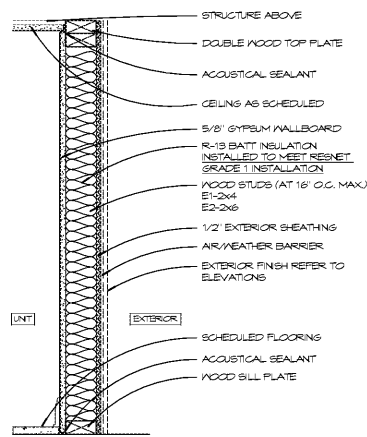
FIRE RATINGS	SOUND RATINGS		
RATING	SOURCE	RATING	SOURCE
2 HR	GA ND, NF 3820	SS-54	NSC 3056, 4-7-10

D TOWNHOUSE UNIT DEMISING WALL PARTITION



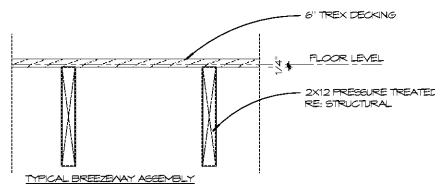
FIRE RATINGS	SOUND RATINGS		
RATING	SOURCE	RATING	SOURCE
2 HR	US21	NA	NA

E EXTERIOR WALL PARTITION 2HR



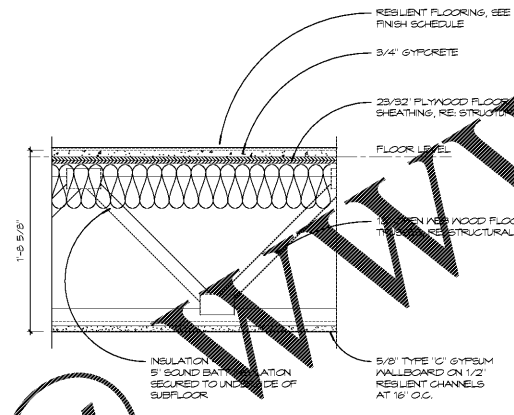
FIRE RATINGS	SOUND RATINGS		
RATING	SOURCE	RATING	SOURCE
NA	NA	NA	NA

E EXTERIOR WALL PARTITION



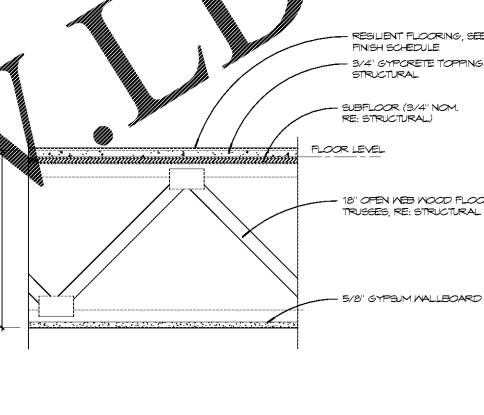
TRUSS SIZE	FIRE RATINGS	SOUND TRANSMISSION			
RATING	SOURCE	P.S.T.C.	F.I.I.C.	SOURCE	
2x12	NA	NA	-	-	-

1 BREEZEWAY FLOOR ASSEMBLY



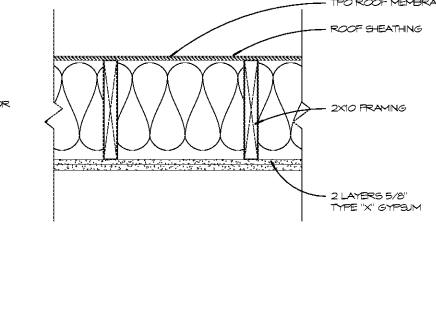
TRUSS SIZE	INSUL.	FIRE RATINGS	SOUND TRANSMISSION				
SIZE	INSUL.	RATING	SOURCE	P.S.T.C.	F.I.I.C.	SOURCE	
18' M	NS	1 HR	UL L574	50 MIN	45	FIELD TESTED	CONTRACTOR TO VERIFY

2 GARDEN FLOOR ASSEMBLY



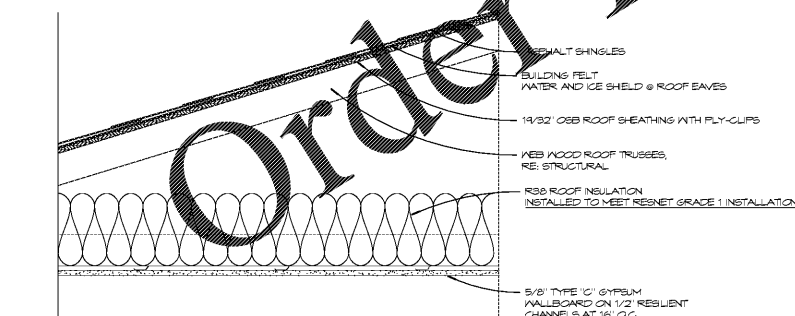
TRUSS SIZE	INSUL.	FIRE RATINGS	SOUND TRANSMISSION			
SIZE	INSUL.	RATING	SOURCE	P.S.T.C.	F.I.I.C.	SOURCE
18'	N/A	N/A	N/A	N/A	N/A	N/A

3 3RD FLOOR ASSEMBLY



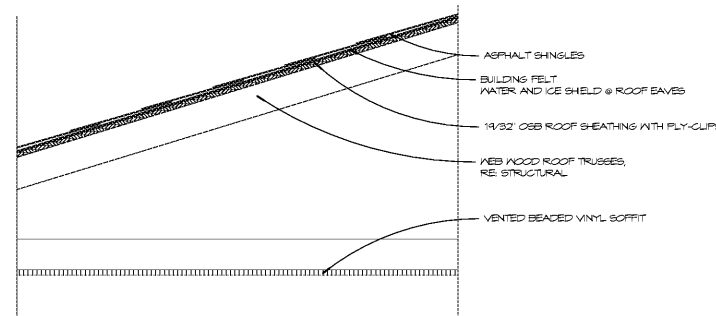
TRUSS SIZE	FIRE RATINGS	
SIZE	RATING	SOURCE
2x10	1 HR	IBC 121.1(3) ITEM 21-1.1

6 SPRINKLER RISER ROOM CEILING/ROOF



TRUSS SIZE	INSUL.	FIRE RATINGS	SOUND TRANSMISSION			
SIZE	INSUL.	RATING	SOURCE	P.S.T.C.	F.I.I.C.	SOURCE
VARIES	YES	1 HR	FB1	NA	NA	NA

4 TYP. ROOF ASSEMBLY

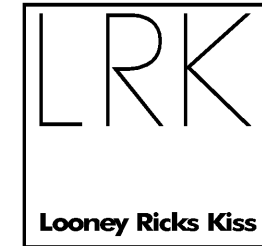


TRUSS SIZE	INSUL.	FIRE RATINGS	SOUND TRANSMISSION			
SIZE	INSUL.	RATING	SOURCE	P.S.T.C.	F.I.I.C.	SOURCE
VARIES	NO	NA	NA	NA	NA	NA

5 ROOF ASSEMBLY AT BREEZEWAYS

CONSTRUCTION ASSEMBLY NOTES

- THE CONTRACTOR SHALL VERIFY ALL ASSEMBLY INFORMATION WITH UNDERWRITERS LABORATORIES, GYPSUM ASSOCIATION, OR OTHER ORGANIZATIONS LISTED IN THE ASSEMBLIES ABOVE TO ENSURE PROPER FIRE RATINGS ARE MAINTAINED.
- WHERE STC (SOUND TRANSMISSION CLASS) RATINGS ARE INDICATED, SOUND-RATED WALL CONSTRUCTION SHALL INCLUDE THE FOLLOWING:
 - CONTINUOUS FLEXIBLE ACOUSTICAL SEALANT AT THE BOTTOM EDGE OF WALLBOARD PANELS.
 - CONTINUOUS FLEXIBLE ACOUSTICAL SEALANT OR JOINT TAPE AND MUD AT WALL INTERSECTIONS. SEAL BETWEEN WALLBOARD AND DISSIMILAR MATERIALS, SUCH AS DOOR OR WINDOW FRAMES.
 - CONTINUOUS ACOUSTICAL SEALANT OR FIRE-CAULK SEALANT (AS REQUIRED BY THE ASSEMBLY LISTING) AT THE TOP EDGE OF THE WALLBOARD.
 - FLEXIBLE ACOUSTICAL SEALANT OR FIRE-CAULK (AS REQUIRED BY THE ASSEMBLY LISTING) AT ALL FULL OR PARTIAL WALL PENETRATIONS AND ROUND OPENINGS, FLUSH-MOUNTED ACCESSORIES, FIRE EXTINGUISHER CABINETS, ELECTRICAL BOXES, ETC. LINE ALL RECESSES FOR BUILT-IN DEVICES SUCH AS FIRE EXTINGUISHER CABINETS, TOILET ACCESSORIES, ETC. WITH WALLBOARD. SEAL ALL JOINTS. COVER ALL KNOCK-OUT PLUGS AND SOBRIA HOLES IN FLUSH-MOUNTED ELECTRICAL BOXES WITH A MINIMUM 1/16" INCH THICK LAYER OF ACOUSTICAL SEALANT. APPLY TAPE OVER MESSING KNOCK-OUT PLUGS AND COVER WITH MINIMUM 1/2" INCH THICK LAYER OF ACOUSTICAL SEALANT.
 - SOUND-RATED WALLS SHALL BE SEALED AIR-TIGHT AT THE PERIMETER AND AT ALL PARTIAL AND THROUGH-PENETRATIONS.
 - EXTEND SOUND-RATED WALLS THROUGH SUSPENDED CEILING AND SEAL THE JOINT AT THE STRUCTURE ABOVE.
 - GYPSUM WALLBOARD AND ACOUSTICAL INSULATION IN SOUND-RATED PARTITIONS SHOULD NOT BE INTERRUPTED AT THE INTERSECTIONS WITH NON-SOUND RATED PARTITIONS. FRAMING AND WALLBOARD OF NON-SOUND RATED CONSTRUCTION SHOULD ABUT THE CONTINUOUS WALLBOARD OF THE SOUND-RATED WALL.
 - REFER TO THE GYPSUM ASSOCIATION FIRE RESISTANCE DESIGN MANUAL, GA-600 - LATEST EDITION, SECTION 11 (SOUND CONTROL), AND TO FIGURE 12 FOR ADDITIONAL DETAILS. FOLLOW GYPSUM ASSOCIATION RECOMMENDATIONS FOR EFFECTIVE SOUND ISOLATION CONSTRUCTION.
- WHERE FIRE-RESISTANT ASSEMBLIES ARE INDICATED, REFER TO THE REFERENCED FIRE-TESTED ASSEMBLY AND PROVIDE THE MATERIALS, BRAND NAMES, PRODUCTS, AND CONSTRUCTION METHODS SPECIFIED THEREIN.
- WHERE FLUSH-MOUNTED ELECTRICAL OUTLET BOXES (1/16" SQUARE INCHES OR LESS) IN BOTH WALL AND CEILING ASSEMBLIES ARE INDICATED, PROVIDE FIRE-RESISTANT PLUGS TO WARE THE ELECTRICAL BOXES. PUTTY PADS WILL BE PROVIDED TO COMPLY WITH THE BUILDING CODE AND TO CONFORM WITH THE REQUIREMENTS OF THE FIRE-TESTED WALL ASSEMBLY, AND WILL BE UL CLASSIFIED WALL OPENINGS PROTECTIVE MATERIAL.
- WHERE RECESSED DEVICES ARE INDICATED IN FIRE-RESISTIVE GYPSUM WALLBOARD CONSTRUCTION, PROVIDE LAYERS OF GYPSUM WALLBOARD BETWEEN THE STUDS, INSIDE THE RECESS - TOP, BOTTOM, BACK, AND SIDES, AS REQUIRED TO MAINTAIN THE FIRE RESISTANCE RATINGS INDICATED. EXAMPLES OF RECESSED DEVICES INCLUDED ARE TOILET ACCESSORIES, FIRE EXTINGUISHER CABINETS, RECESSED LIGHTS, ETC. UNLESS A RATED FIXTURE IS BEING PROVIDED TO MAINTAIN THE RATINGS OF THE ASSEMBLY.
- EXTERIOR WALL CONSTRUCTION - ALL PARTIAL PENETRATIONS SHALL BE SEALED. PENETRATIONS THROUGH THE INTERIOR SIDE OF EXTERIOR WALLS SHALL BE SEALED AIR-TIGHT TO PREVENT AIR INFILTRATION. EXAMPLE - ELECTRICAL BOX FOR SWITCH OR OUTLET. PENETRATIONS THROUGH THE EXTERIOR SIDE OF EXTERIOR WALLS SHALL BE SEALED WATER-TIGHT. EXAMPLE - HOSE BIB, CONDUT, OR PIPE.
- PIPE AND VALVE PENETRATIONS OF WALLBOARD AT BATHUBS AND SHOWERS SHALL BE SEALED USING SILICONE SEALANT WITH MILDLY-RESISTANT PROPERTIES.



Architecture Planning Interiors Research
50 South B.B. King Boulevard
Memphis, Tennessee 38103
Telephone 901 521 1440
Fax 901 525 2760
E-mail info@lrk.com

Client:
McCormack Baron Salazar

720 Olive St Suite 2500
St. Louis, MO 63101

Issues and Revisions

Date	Issued / Revised
3/16/2020	50% CONSTRUCTION DOCS
5/18/2020	80% CONSTRUCTION DOCS
7/13/2020	PERMIT SUBMISSION

BUILDING ADDRESSES

TYPE 6D	442, 444, 446, 448 RATLIFF LANE
TYPE 6A	324, 236, 238, 330 SHAWM PLACE
TYPE 6A	378, 448 VANCE AVE
TYPE 6A	348, 344 FOOT LANE
TYPE 6A	388 S DANNY THOMAS BLVD
TYPE 6A	368, 481 VANCE AVE
TYPE 6A	378 SHAWM PLACE
TYPE 6A	321 SHAWM PLACE
TYPE 6A	450, 390 FOOT LANE
TYPE 6A	345 S DANNY THOMAS BLVD
TYPE 6A	402, 406 FOOT LANE

©2020 LRK, Inc.
Drawings, written material, and design concepts shall not be used or reproduced in whole or part in any form or format without prior written consent of LRK, Inc. Do not scale drawings. Use given dimensions only. If not shown, verify correct dimensions with the Architect. Contractor shall check and verify all dimensions and conditions of job site.

Scale



LRK Project Number: 01.15100.43

Project Name:
South City CNI Phase 4
Memphis TN

Drawing Name:

PARTITION TYPES

Drawn By: ADB
Checked By: HJL

G-005