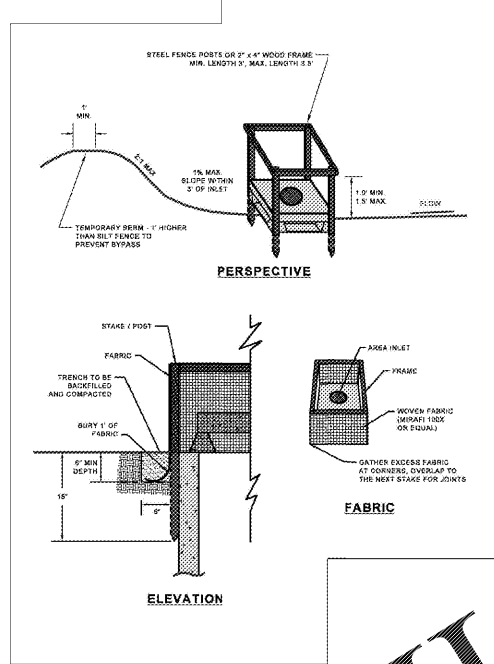
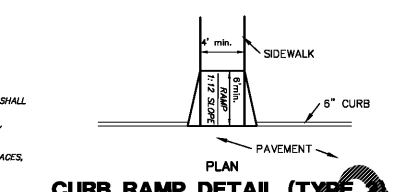
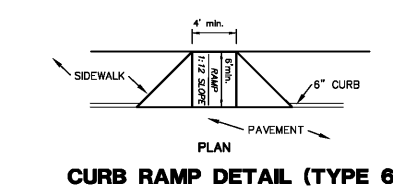
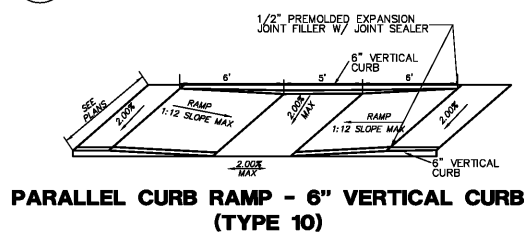


1 SILT FENCE DETAIL
C6.1 SCALE: NTS

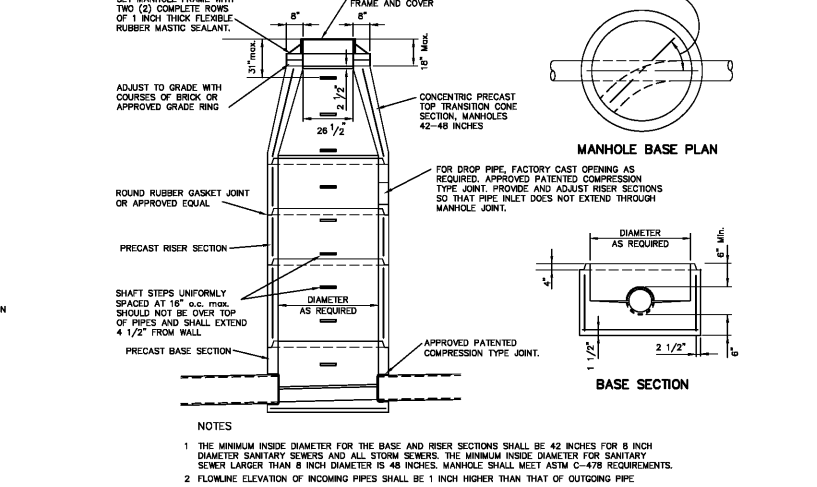
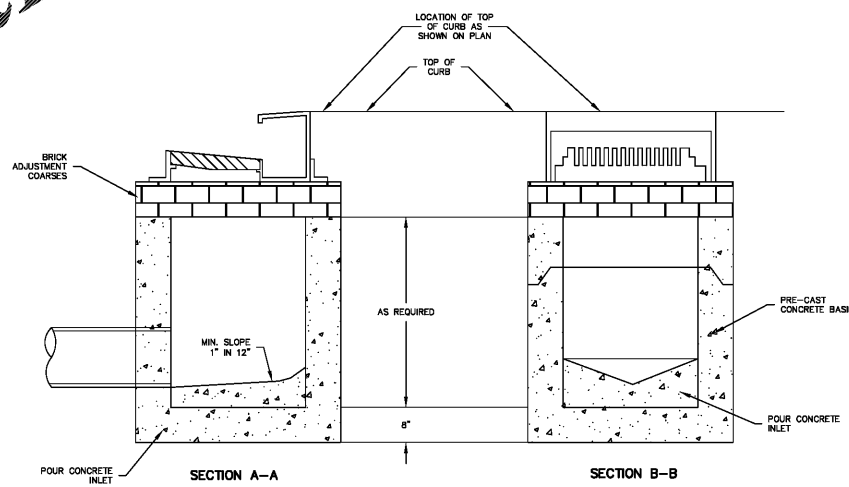
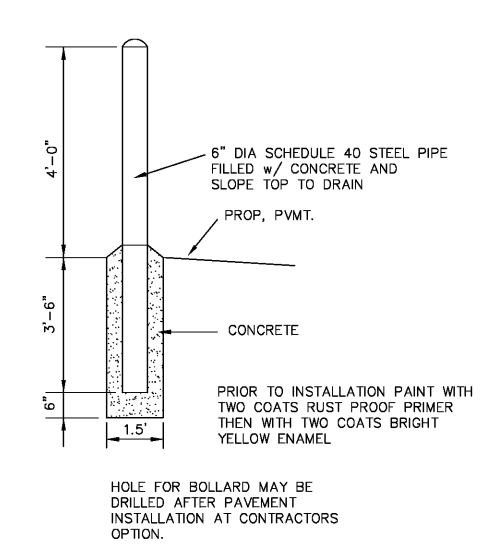
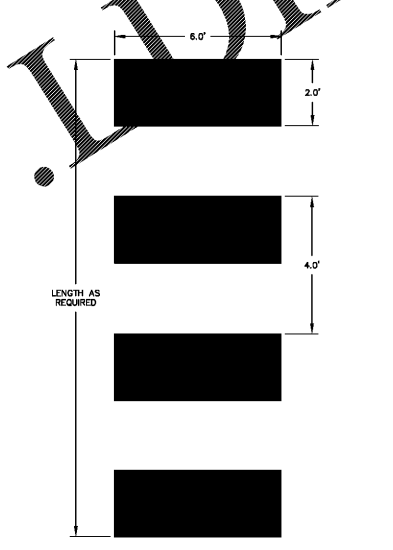
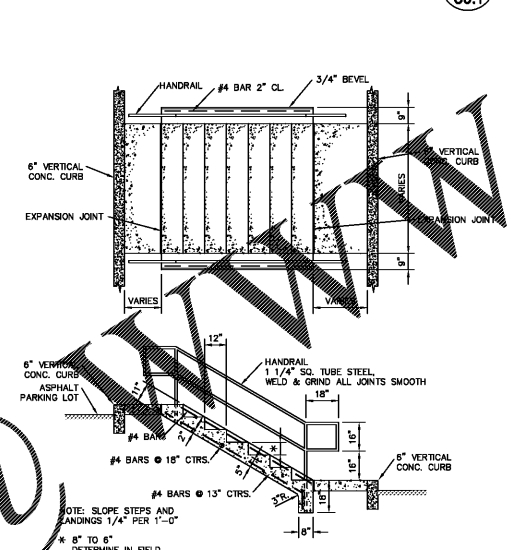


2 INLET PROTECTION
C6.1 SCALE: NTS

- CURB RAMP NOTES**
- DO NOT SCALE DRAWING. FOLLOW DIMENSIONS.
 - SIDEWALKS AND SIDEWALK CURB RAMPS SHALL BE CONSTRUCTED IN ACCORDANCE WITH THESE DETAILS AND THE CURRENT APPROVED "AMERICANS WITH DISABILITIES ACT ACCESSIBILITY GUIDELINES" (ADAAG).
 - PROVIDE A LANDING AT THE TOP OF EACH STRAIGHT RAMP WHEN THE GRADE ALONG CURB ("G") IS GREATER THAN +2% AND LESS THAN +7% FOR OTHER VALUES OF "G", INCLUDING ALL NEGATIVE (-) VALUES, NO LANDING IS REQUIRED.
 - MINIMUM SIDEWALK WIDTH ALONG 6" VERTICAL CURB SHALL BE 5 FEET. MINIMUM SIDEWALK WIDTH ALONG 3" ROLLED CURB SHALL BE 4 FEET.
 - MAXIMUM SIDEWALK CROSS SLOPE 0.02'/FT.
 - ALL SIDEWALK SECTIONS SHALL BE 4" THICK, EXCEPT WHERE INDICATED OTHERWISE BY SHADED PORTIONS SHOWN ON DETAILS. ALL SIDEWALK SECTIONS AND CURB RAMPS, REGARDLESS OF THICKNESS, SHALL BE PAID FOR AS "CONCRETE SIDEWALK".
 - WHERE CURB RAMP MEETS PAVEMENT, BULLNOSE WILL NOT BE PERMITTED.
 - CONSTRUCT A DIAGONAL RAMP WHEN THE MAXIMUM CORNER RADIUS ALLOWED FOR A STRAIGHT RAMP IS EXCEEDED.
 - IF INTEGRAL CONCRETE CURB IS CONSTRUCTED, STRIKE A DUMMY JOINT ACROSS BOTTOM OF RAMP AT CURB LINE. IF CONCRETE CURB IS DOWELED-ON, BLOCK OUT PAVEMENT TO PROVIDE FULL DEPTH CURB ACROSS RAMP FROM OUTER POINT OF CURB TAPER TO OUTER POINT OF CURB TAPER.
 - FOR SIDEWALK LOCATIONS ON CUL-DE-SACS, REFER TO "PAVEMENT CONSTRUCTION DETAILS".
 - FOR PAVEMENT LONGITUDINAL AND TRANSVERSE JOINTS AND DOWEL AND BAR REQUIREMENTS AND DIMENSIONS, REFER TO THE PAVEMENT CONSTRUCTION DETAILS FOR "JOINTS AND CURBS", STANDARD DRAWING C502.03.
 - FOR ROADWAY CROSS SLOPES, PAVEMENT TYPES, AND THICKNESSES, REFER TO "STANDARD TYPICAL SECTION".
 - A DETECTABLE WARNING CONSISTING OF TRUNCATED DOMES SHALL BE PLACED AT EACH CURB RAMP IF CURB CUTS ARE USED TO ALLOW A CROSSWALK TO PASS THROUGH AN ISLAND THEN DETECTABLE WARNINGS SHALL BE PLACED AT EACH END POINT FROM THE ISLAND.
 - THE DETECTABLE WARNING SHALL BE A PRE-MOLDED TILE CAST DIRECTLY INTO THE PLASTIC CONCRETE.
 - THE WARNING SURFACE SHALL CONTRAST VISUALLY WITH ADJOINING SURFACES, EITHER LIGHT ON DARK, OR DARK ON LIGHT.
 - THE DETECTABLE WARNING SHALL BE PLACED WITHIN 6 TO 8 INCHES OF THE CURB LINE.
 - THE DETECTABLE WARNING SHALL EXTEND 24 INCHES IN THE DIRECTION OF TRAVEL AND THE FULL WIDTH OF THE RAMP, LANDING OR BLENDED TRANSITION.
 - TRANSITIONS FROM RAMPS TO WALKS, GUTTERS, OR STREETS SHALL BE FLUSH AND FREE OF ABRUPT CHANGES.



3 CURB RAMP DETAIL
C6.1 SCALE: NTS



GRIMES CONSULTING, INC.
12348 OLD TESSERA RD.
SUITE 1000
ST. LOUIS, MO 63128
TEL (314) 849-6100
FAX (314) 849-6018
www.grimesconsulting.com
PE COAR E-1478-D
PLS COAR LS-3-0-D

LRK

Looney Ricks Kiss

Architecture Planning Interiors Research
50 South B.B. King Boulevard
Memphis, Tennessee 38103
Telephone 901.521.1440
Fax 901.525.2760
E-mail info@lrk.com

Client:

**McCormack
Baron
Salazar**

720 Olive St Suite 2500
St. Louis, MO 63101

Issues and Revisions

Date	Issued / Revised
3/16/2020	50% CONSTRUCTION DOCS
5/15/2020	80% CONSTRUCTION DOCS
06/29/2020	REV. ADA UNIT LOCATIONS
07/13/2020	PERMIT SUBMISSION

BUILDING ADDRESSES

TYPE G-B
TYPE H-A
TYPE I-C
TYPE M-A
TYPE X-A

© 2020 LRK Inc.
Drawings, when material, and design concepts shall not be used or reproduced in whole or part in any form or format without prior written consent of LRK Inc. Do not scale drawings. Use given dimensions only. If not shown, verify correct dimensions with the Architect. Contractor shall check and verify all dimensions and conditions at job site.

Seal

LRK Project Number: 01.15100.43
Grimes Consulting Project Number: 3210

Project Name:
**SOUTH CITY SUBDIVISION
PHASE 4**
Memphis TN

Drawing Name:

DETAILS

Drawn By: JRB
Checked By: JLW

C6.1

Order Plans @