

Architecture Planning Interiors Research
50 South B. B. King Boulevard
Memphis, Tennessee 38103
Telephone 901 521 1440
Fax 901 525 2760
E-mail info@lrk.com

Client:
**McCormack
Baron
Salazar**

720 Olive St Suite 2500
St. Louis, MO 63101

Issues and Revisions

Date	Issued / Revised
1 3/16/2020	50% CONSTRUCTION DOCS
2 5/15/2020	80% CONSTRUCTION DOCS
3 06/29/2020	REV. ADA UNIT LOCATIONS
4 07/13/2020	PERMIT SUBMISSION

BUILDING ADDRESSES

TYPE G-B
TYPE H-A
TYPE I-C
TYPE M-A
TYPE K-A

©2020 LRK Inc.
Drawings, written material, and design concepts shall not be used or reproduced in whole or part in any form or format without the prior written consent of LRK Inc. Do not scale drawings. Use given dimensions only. If not shown, verify correct dimensions with the Architect. Contractor shall check and verify all dimensions and conditions at job site.

Seal

LRK Project Number: 01.15100.43

Grimes Consulting Project Number: 3210

Project Name:

**SOUTH CITY SUBDIVISION
PHASE 4**

Memphis TN

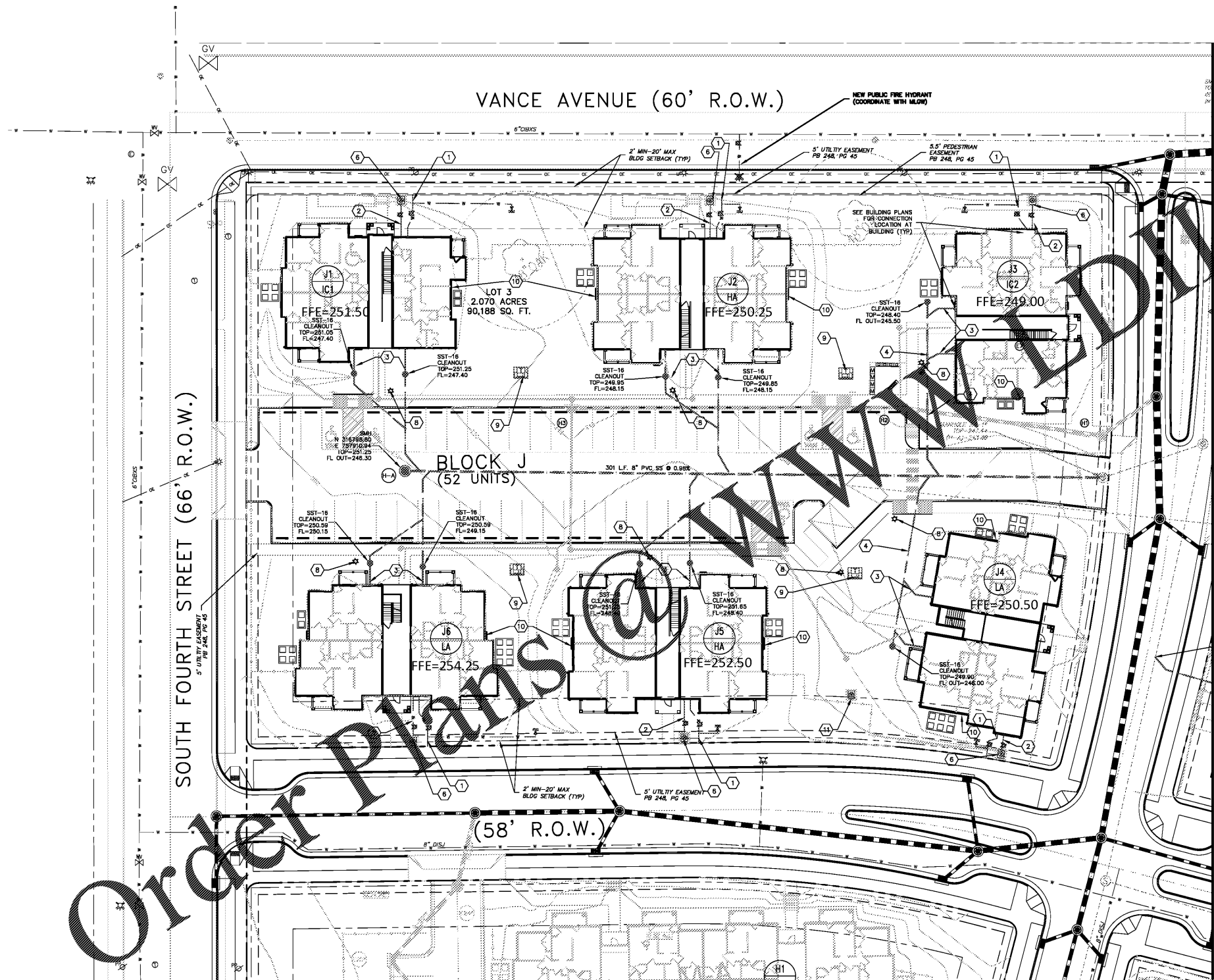
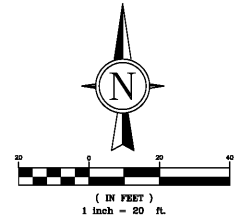
Drawing Name:

UTILITY PLAN

Drawn By: JRB

Checked By: JLW

C5.2



- KEYNOTES:**
- ① 2" DIP FIRE LINE
 - ② 2" PVC WATER SERVICE LINE
 - ③ 4" SDR 26 PVC SANITARY SEWER
 - ④ 8" SDR 26 PVC SANITARY SEWER
 - ⑤ PLUG/CAP END
 - ⑥ PROPOSED WATER METER IN VAULT (COORDINATE WITH M.G.W.)
 - ⑦ 2" GATE VALVE, FLUSH MOUNT BOX
 - ⑧ PROPOSED LIGHT POLE
 - ⑨ PROPOSED TRANSFORMER (COORDINATE WITH M.G.W.)
 - ⑩ HOUR PANEL
 - ⑪ 1-1/2" INDICATION METER
- LEGEND:**
- PROPOSED SANITARY LINE
 - PROPOSED WATER VALVE
 - PROPOSED WATER METER
 - PROPOSED FIRE CONNECTION
 - PROPOSED POST INDICATOR VALVE
 - PROPOSED LIGHT POLE
 - PROPOSED FIRE HYDRANT
 - PROPOSED TRANSFORMER

- NOTES:**
1. CONNECTION TO WATER MAIN AND INSTALLATION OF WATER METER AND VAULT BY OTHERS
 2. LIGHT POLE LOCATIONS SHOWN FOR REFERENCE ONLY. SEE ELECTRICAL PLANS FOR EXACT LOCATION
 3. ALL REMOTE FDC CONNECTIONS REQUIRE SIGNAGE TO INDICATE ADDRESS OF EACH DEVICE PER DETAIL 14/C6.0

Order Plans @ www.drawing.com

www.drawing.com

MATCHLINE SEE SHEET C5.3