



Looney Ricks Kiss

GRIMES CONSULTING, INC.
12989 OLD TESSERA RD.
SUITE 1000
ST. LOUIS, MO 63143
TEL: (314) 644-6100
FAX: (314) 644-6108
www.grimesconsulting.com
PE COAR E-1510-D
PLS COAR LS-3-10

Architecture Planning Interiors Research
50 South B. B. King Boulevard
Memphis, Tennessee 38103
Telephone 901 521 1440
Fax 901 525 2760
E-mail info@lrk.com

Client:
**McCormack
Baron
Salazar**

720 Olive St Suite 2500
St. Louis, MO 63101

Issues and Revisions

Date	Issued / Revised
3/16/2020	50% CONSTRUCTION DOCS
5/15/2020	80% CONSTRUCTION DOCS
06/29/2020	REV. ADA UNIT LOCATIONS
07/13/2020	PERMIT SUBMISSION

BUILDING ADDRESSES

TYPE	ADDRESS
TYPE G-B	
TYPE H-A	
TYPE L-C	
TYPE M-A	
TYPE K-A	

© 2020 LRK Inc.
Drawings, written material, and design concepts shall not be used or reproduced in whole or part in any form or format without prior written consent of LRK Inc. Do not scale drawings. Use given dimensions only. If not shown, verify correct dimensions with the Architect. Contractor shall check and verify all dimensions and conditions of job site.

Seal

LRK Project Number: 01.15100.43
Grimes Consulting Project Number: 3210

Project Name:
**SOUTH CITY SUBDIVISION
PHASE 4**

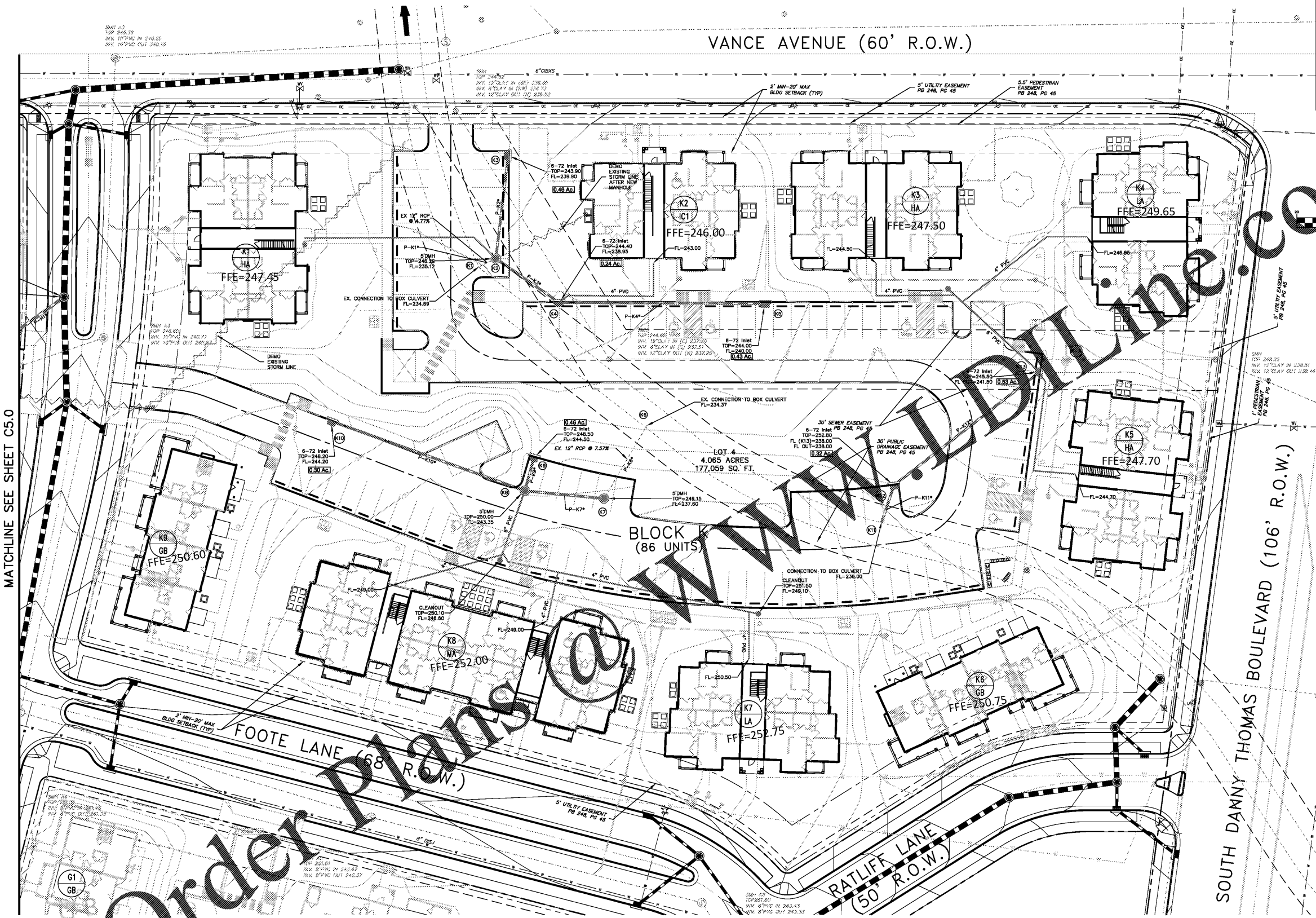
Memphis TN

Drawing Name:

UTILITY PLAN - STORM

Drawn By: JRB
Checked By: JLW

C5.1



MATCHLINE SEE SHEET C5.0

Order Plans

Pipe Table

Pipe Label	Upstream Node	Upstream Invert (ft)	Downstream Node	Downstream Invert (ft)	Length (ft)	Slope (ft/ft)	Size (in)	Area in Pipe	Q Design (cfs)	Q Capacity (cfs)	Pipe Type
P-K1*	K2	236.12	K1	234.69	10	0.045	12	9.87	5.25	7.58	RCP
P-K2*	K3	239.90	K2	239.38	52	0.010	12	9.87	2.59	3.57	RCP
P-K3*	K4	238.95	K2	238.55	39	0.010	12	9.87	3.20	3.63	RCP
P-K4*	K4	238.95	K5	240.00	104	0.010	12	9.87	2.05	3.59	RCP
P-K6*	K7	237.60	K6	234.37	43	0.076	12	9.87	3.87	9.83	RCP
P-K7*	K8	243.35	K7	242.75	40	0.015	12	9.87	3.87	4.38	RCP
P-K9*	K8	243.35	K9	244.50	18	0.068	12	9.87	2.53	9.14	RCP
P-K10*	K8	243.35	K10	244.20	103	0.008	12	9.87	1.43	3.24	RCP
P-K11*	K12	238.00	K11	236.00	20	0.102	12	9.87	4.68	11.39	RCP
P-K12*	K13	241.50	K12	238.00	93	0.038	12	9.87	2.92	6.94	RCP

Structure Table

Node	Description	Area (Ac.)	Q Design (cfs)	Rim Elev (ft)	Sump Elev (ft)	Northing	Easting
K1	EX. CONNECTION TO BOX CULVERT	0.00	0.00	245.05	234.89	316782.1021	758445.3955
K2	S'DMH	0.00	0.00	246.29	235.12	316764.8234	758454.5596
K3	6-72 Inlet	0.46	2.59	243.90	235.90	316815.0562	758488.8268
K4	6-72 Inlet	0.24	1.15	244.40	238.31	316738.9029	758482.5946
K5	6-72 Inlet	0.43	2.05	244.00	237.91	316721.2195	758585.2472
K6	EX. CONNECTION TO BOX CULVERT	0.00	0.00	247.00	234.37	316669.8047	758516.6112
K7	S'DMH	0.25	0.00	249.15	237.60	316636.8741	758489.4957
K8	S'DMH	0.00	0.00	250.00	243.35	316646.9810	758450.8738
K9	6-72 Inlet	0.46	2.53	248.50	244.00	316662.9796	758457.8896
K10	6-72 Inlet	0.30	1.43	248.20	244.20	316696.7453	758380.1783
K11	CONNECTION TO BOX CULVERT	0.00	0.00	248.30	236.00	316603.2078	758625.8701
K12	6-72 Inlet	0.32	1.76	252.80	245.44	316620.8514	758634.9425
K13	6-72 Inlet	0.53	2.92	245.50	241.00	316665.3950	758716.2511

- NOTES:**
- (*) - PRIVATE DRAINAGE
 - ALL PVC PIPES INCLUDED IN THE ROOF DRAIN COLLECTION SYSTEM ARE PRIVATE.
 - ALL OTHER DRAINAGE PIPES NOT LABELED PRIVATE DRAINAGE ARE PUBLIC DRAINAGE INCLUDED ON THE PUBLIC IMPROVEMENT PLANS.
 - ALL INLINE DRAINS AND CLEANOUTS INCLUDED IN THE ROOF COLLECTION SYSTEM ARE PRIVATE.
 - ALL OTHER DRAIN STRUCTURES NOT LABELED PRIVATE DRAINAGE ARE PUBLIC DRAINAGE AND INCLUDED ON THE PUBLIC IMPROVEMENT PLANS.
 - SEE SHEET S1 OF THE PUBLIC IMPROVEMENT PLANS FOR CONNECTION TO BOX CULVERT DETAIL.