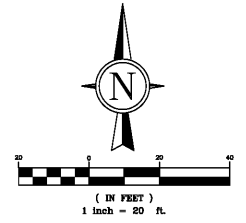




GRIMES CONSULTING, INC.
12380 OLD TESSERA RD.
SUITE 1000
ST. LOUIS, MO 63128
TEL (314) 849-6100
FAX (314) 849-6018
www.grimesconsulting.com
PE COAR E-1478-D
PLS COAR LS-3-0-D

LRK

Looney Ricks Kiss



Architecture Planning Interiors Research
50 South B. B. King Boulevard
Memphis, Tennessee 38103
Telephone 901 521 1440
Fax 901 525 2760
E-mail info@lrk.com

Client:
**McCormack
Baron
Salazar**

720 Olive St Suite 2500
St. Louis, MO 63101

Issues and Revisions

▲	Date	Issued / Revised
1	3/16/2020	50% CONSTRUCTION DOCS
2	5/15/2020	80% CONSTRUCTION DOCS
3	06/29/2020	REV. ADA UNIT LOCATIONS
4	07/13/2020	PERMIT SUBMISSION

BUILDING ADDRESSES

TYPE G-B
TYPE H-A
TYPE I-C
TYPE M-A
TYPE K-A

© 2020 LRK Inc.
Drawings, written material, and design concepts shall not be used or reproduced in whole or part in any form or format without the prior written consent of LRK Inc. Do not scale drawings. Use given dimensions only. If not shown, verify correct dimensions with the Architect. Contractor shall check and verify all dimensions and conditions at job site.

Seal

LRK Project Number: 01.15100.43

Grimes Consulting Project Number: 3210

Project Name:

**SOUTH CITY SUBDIVISION
PHASE 4**

Memphis TN

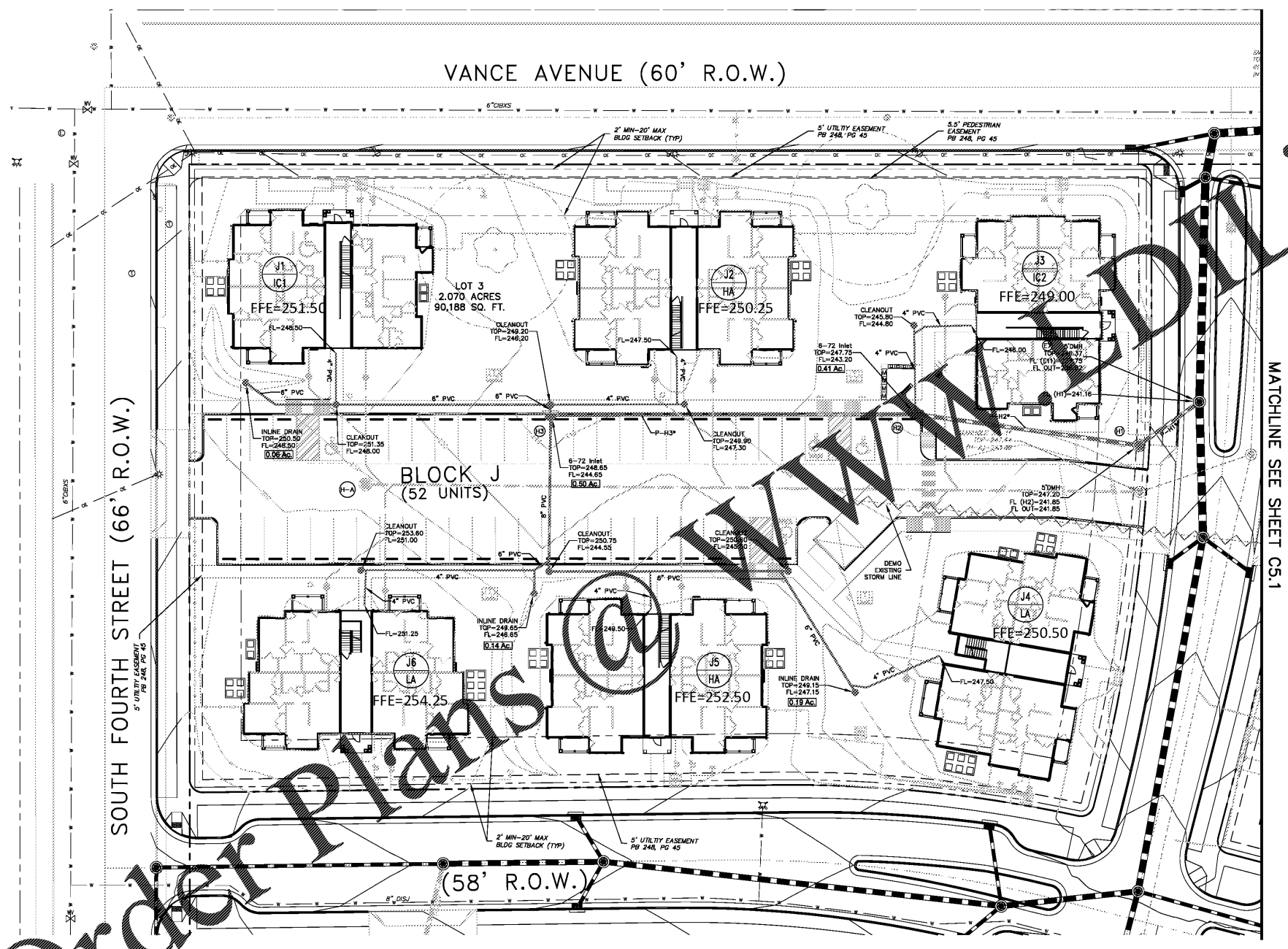
Drawing Name:

UTILITY PLAN - STORM

Drawn By: JRB

Checked By: JLW

C5.0



Pipe Table

Pipe Label	Upstream Node	Upstream Invert (ft)	Downstream Node	Downstream Invert (ft)	Length (ft)	Slope (ft/ft)	Size (in)	Area in Pipe (sq ft)	Q Design (cfs)	Q Capacity (cfs)	Pipe Type
P-H1*	H1	241.85	H-E7	241.16	29	0.024	15	15.42	6.74	9.96	RCP
P-H2*	H2	243.20	H1	241.85	88	0.015	15	15.42	6.74	8.03	RCP
P-H3*	H3	244.65	H2	243.20	142	0.010	15	15.42	4.42	6.55	RCP

Structure Table

Node	Description	Area (Ac.)	Q Design (cfs)	Rim Elev (ft)	Sump Elev (ft)	Northing	Easting
H-E7	5'DMH	0.00	0.00	242.68	241.16	316779.7525	758236.4990
H1	5'DMH	0.00	0.00	247.20	241.50	316766.8850	758210.8328
H2	6-72 Inlet	0.41	2.32	247.75	244.65	316792.2998	758126.6459
H3	6-72 Inlet	0.50	2.82	248.65	244.52	316814.3552	757986.3872

- NOTES:**
- (*) - PRIVATE DRAINAGE
 - ALL PVC PIPES INCLUDED IN THE ROOF DRAIN COLLECTION SYSTEM ARE PRIVATE.
 - ALL OTHER DRAINAGE PIPES NOT LABELED PRIVATE DRAINAGE ARE PUBLIC DRAINAGE INCLUDED ON THE PUBLIC IMPROVEMENT PLANS.
 - ALL INLINE DRAINS AND CLEANOUTS INCLUDED IN THE ROOF COLLECTION SYSTEM ARE PRIVATE.
 - ALL OTHER DRAIN STRUCTURES NOT LABELED PRIVATE DRAINAGE ARE PUBLIC DRAINAGE AND INCLUDED ON THE PUBLIC IMPROVEMENT PLANS.

Order Plans @ www.drawingline.com