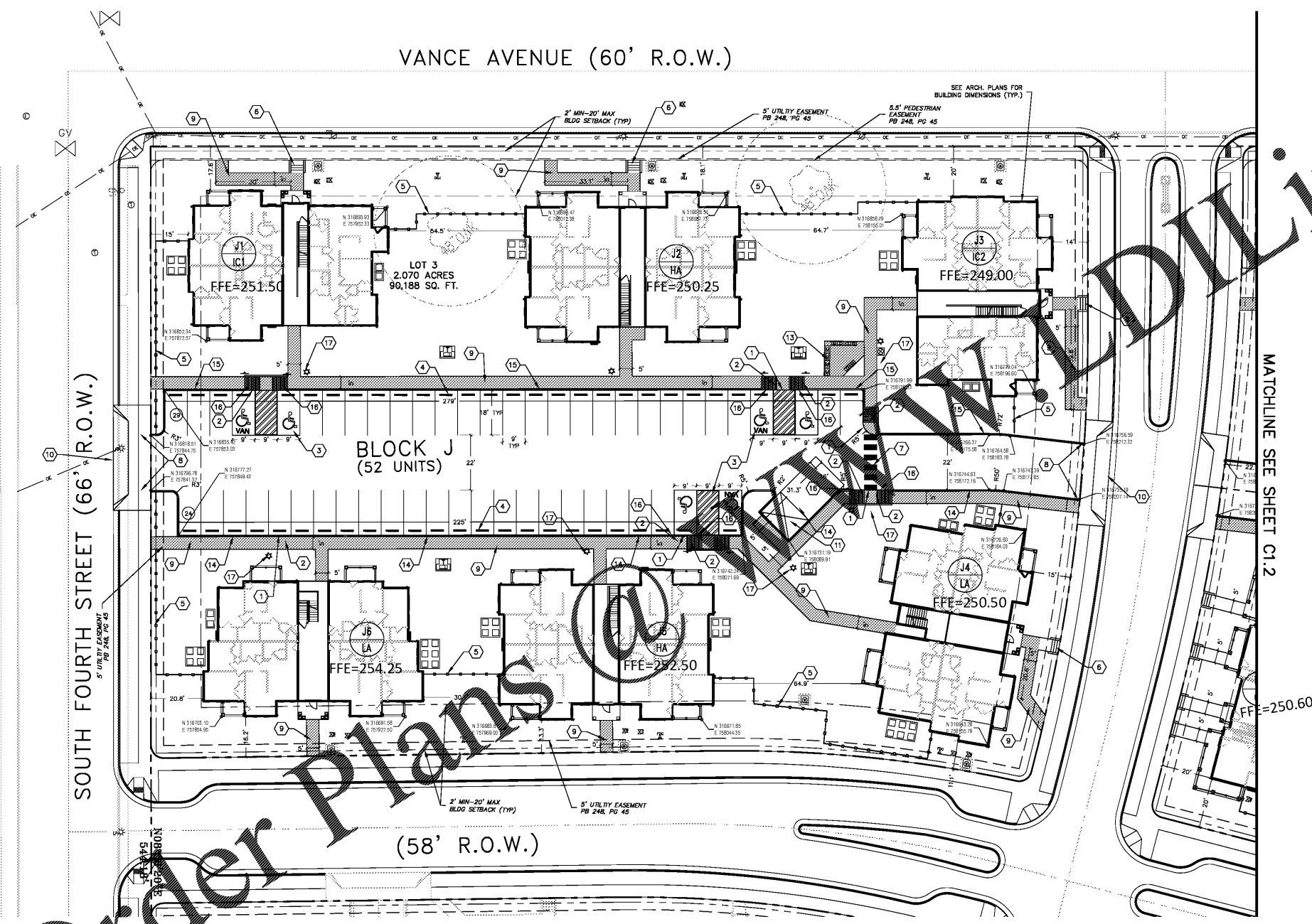
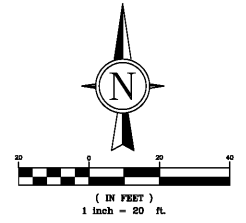


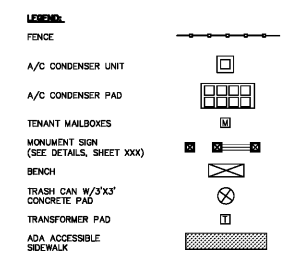


Looney Ricks Kiss

Architecture Planning Interiors Research
50 South B.B. King Boulevard
Memphis, Tennessee 38103
Telephone 901 521 1440
Fax 901 525 2760
E-mail info@lrk.com



- NOTES**
- SIDEWALK FLUSH WITH PAVEMENT, SLOPE ADJACENT CURB TO FLUSH (2' CURB TRANSITION MINIMUM) WITH PAVEMENT
 - RAMP SIDEWALK DOWN TO FLUSH WITH PAVEMENT
 - ADA PARKING (SEE DETAIL 12, SHEET C6.0)
 - HOPE WHEEL STOP (SEE DETAIL 5, SHEET C6.0)
 - ORNAMENTAL FENCE (SEE LANDSCAPE PLANS FOR DETAILS)
 - CONCRETE STAIRS (SEE DETAIL 1, SHEET C6.1)
 - PEDESTRIAN SIDEWALK (SEE DETAIL 5, SHEET C6.1)
 - 2' CURB TRANSITION TO FLUSH WITH PAVEMENT WITH 1/4" RAMP
 - CONCRETE (SEE DETAIL 11, SHEET C6.0)
 - EXISTING CONCRETE DRIVEWAY
 - ADA ACCESSIBLE DUMPSTER ENCLOSURE (SEE LANDSCAPE PLANS FOR ENCLOSURE)
 - SEGMENTAL BLOCK RETAINING WALL (SEE DETAIL 9, SHEET C6.0)
 - ADA ACCESSIBLE MAIL KIOSK
 - 6-18 CURB & SPILL GUTTER (SEE DETAIL 1, SHEET C6.0)
 - 6-18 CURB & CATCH GUTTER (SEE DETAIL 2, SHEET C6.0)
 - TRANSITION CURB & GUTTER
 - PROPOSED LIGHT POLE



- NOTES**
- CONTRACTOR SHALL BE FAMILIAR WITH THE SITE AND CHECK ALL FINAL DIMENSIONS ON THE GROUND PRIOR TO CONSTRUCTION ACTIVITIES. NOTIFY THE ARCHITECT/ENGINEER IMMEDIATELY OF DISCREPANCIES FROM THE PLANS.
 - THE EXACT LOCATION OF ALL EXISTING UTILITIES SHALL BE VERIFIED IN THE FIELD BY THE CONTRACTOR. CARE SHALL BE TAKEN TO PROTECT ANY UTILITIES THAT ARE TO REMAIN AND ALL CONSTRUCTION SHALL BE COORDINATED WITH THE APPROPRIATE UTILITY COMPANY/AGENCY. ANY DAMAGED UTILITY SHALL BE REPAIRED/RELOCATED TO MEET LOCAL STANDARDS AT THE CONTRACTOR'S EXPENSE. CONTRACTOR SHALL HAVE ALL UTILITIES LOCATED PRIOR TO ANY CONSTRUCTION ACTIVITIES TAKING PLACE.
 - THE CONTRACTOR SHALL CUT CLEAN EDGES ON EXISTING PAVEMENT AND PROVIDE SMOOTH TRANSITION INTO PROPOSED PAVEMENT.
 - PROPOSED SIDEWALKS OUTSIDE OF THE R.O.W. BEHIND THE UNITS, AND ANY CONNECTING SIDEWALKS SHALL HAVE A MAX LONGITUDINAL SLOPE OF 5% AND A MAX CROSS-SLOPE OF 2%. CONTRACTOR SHALL NOTIFY THE ENGINEER IF THE INFORMATION ON THESE PLANS EXCEED THE MAXIMUM ALLOWABLE SLOPES OR THE IMPROVEMENTS CAN NOT BE CONSTRUCTED WITHIN THE MAXIMUM ALLOWABLE SLOPE LIMITS.
 - PROPOSED CURB RAMPS SHALL HAVE A MAX. LONGITUDINAL SLOPE OF 8.3% AND A MAX CROSS-SLOPE OF 2%. CONTRACTOR SHALL NOTIFY THE ENGINEER IF THE INFORMATION ON THESE PLANS EXCEED THE MAXIMUM ALLOWABLE SLOPES OR THE IMPROVEMENTS CAN NOT BE CONSTRUCTED WITHIN THE MAXIMUM ALLOWABLE SLOPE LIMITS.
 - PROPOSED ADA PARKING SPACES SHALL NOT EXCEED 2% SLOPE IN ANY DIRECTION. CONTRACTOR SHALL NOTIFY THE ENGINEER IF THE INFORMATION ON THESE PLANS EXCEED THE MAXIMUM ALLOWABLE SLOPES OR THE IMPROVEMENTS CAN NOT BE CONSTRUCTED WITHIN THE MAXIMUM ALLOWABLE SLOPE LIMIT.
 - ALL "PRIVATE" CURB SHALL BE CITY OF MEMPHIS 6-18 CURB AND GUTTER.
 - ALL ADA PARKING SPACES SHALL BE CONSTRUCTED WITH HEAVY DUTY CONCRETE PAVEMENT.
 - THE PAVEMENT MARKINGS SHALL BE 4" PAINT AND SHALL CONFORM TO THE MCCORMACK BARON SALAZAR DESIGN GUIDELINES AND THE CITY OF MEMPHIS STANDARD CONSTRUCTION SPECIFICATIONS SECTION 02780 - PAVEMENT MARKINGS.
 - THE SEGMENTAL BLOCK WALLS SHALL CONFORM TO THE MCCORMACK BARON SALAZAR DESIGN GUIDELINES AND BE INSTALLED IN CONFORMANCE TO THE MANUFACTURER'S SPECIFICATIONS.
 - STATE PLANE COORDINATES: TN NAD83
 - SEGMENTAL BLOCK WALL RAILING SHALL BE 42" HIGH ORNAMENTAL FENCING. FENCING SHALL CONFORM TO THE MCCORMACK BARON SALAZAR DESIGN GUIDELINES AND BE INSTALLED IN CONFORMANCE TO THE MANUFACTURER'S SPECIFICATIONS.
 - WHEEL STOPS SHALL BE PLACED 2'-0" FROM THE FACE OF CURB TO THE CENTER OF THE WHEEL STOP.
 - CONCRETE SLAB SHALL BE CONTINUOUS FOR ADJACENT AIR CONDENSER UNITS.
 - CONTRACTOR TO COORDINATE WITH LANDSCAPE PLANS AND MANUFACTURER REGARDING BENCH AND TRASH CAN SPECIFICATIONS AND INSTALLATION.
 - DIMENSIONS SHOWN ARE TO FACE OF CURB UNLESS OTHERWISE NOTED.

Client:

**McCormack
Baron
Salazar**

720 Olive St Suite 2500
St. Louis, MO 63101

Issues and Revisions

Date	Issued / Revised
1 3/16/2020	50% CONSTRUCTION DOCS
2 5/15/2020	80% CONSTRUCTION DOCS
3 06/29/2020	REV. ADA UNIT LOCATIONS
4 07/13/2020	PERMIT SUBMISSION

BUILDING ADDRESSES

TYPE	G-B
TYPE B-A	
TYPE I-C	
TYPE M-A	
TYPE K-A	

© 2020 LRK Inc.
Drawings, written material, and design concepts shall not be used or reproduced in whole or part in any form or format without prior written consent of LRK Inc. Do not scale drawings. Use given dimensions only. If not shown, verify correct dimensions with the Architect. Contractor shall check and verify all dimensions and conditions of job site.

LRK Project Number: 01.15100.43
Grimes Consulting Project Number: 3210
Project Name:
**SOUTH CITY SUBDIVISION
PHASE 4**
Memphis TN

Drawing Name:
SITE PLAN
Drawn By: JRB
Checked By: JLW

C1.1

Order Plans

www.lrdrawing.com