

19045-C4.2-DRAINAGE.dwg



08/31/2020 TRC STAMP CITY COUNCIL STAMP TARR GROUP PROJECT #: 19045

STARBUCKS - RALEIGH ROAD
REAL ZEAL PROPERTY GROUP
5019 RALEIGH ROAD PKWY W (LOT 6A) & 5025 RALEIGH ROAD PKWY W (LOT 3A)
WILSON, NORTH CAROLINA



ORIGINAL ISSUE DATE: 08/04/2020	
REVISIONS:	
PER STARBUCKS COMMENTS	08/19/2020
PER CITY OF WILSON COMMENTS	08/31/2020

DRAINAGE PLAN
C4.2

IMPERVIOUS AREA CALCULATIONS:

PROPOSED LOT 3
EXISTING PERVIOUS AREA = 0.09 AC
EXISTING IMPERVIOUS AREA = 0.0 AC
EXISTING BUILT-UPON AREA = 0%

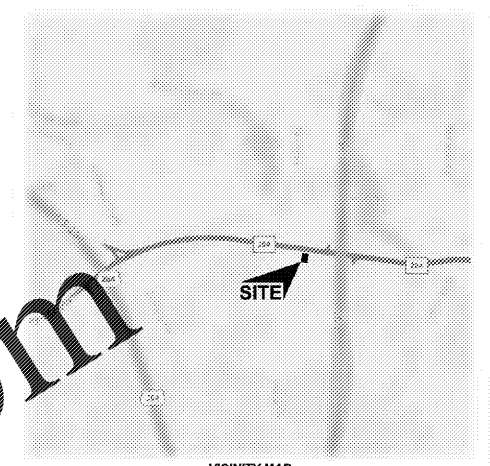
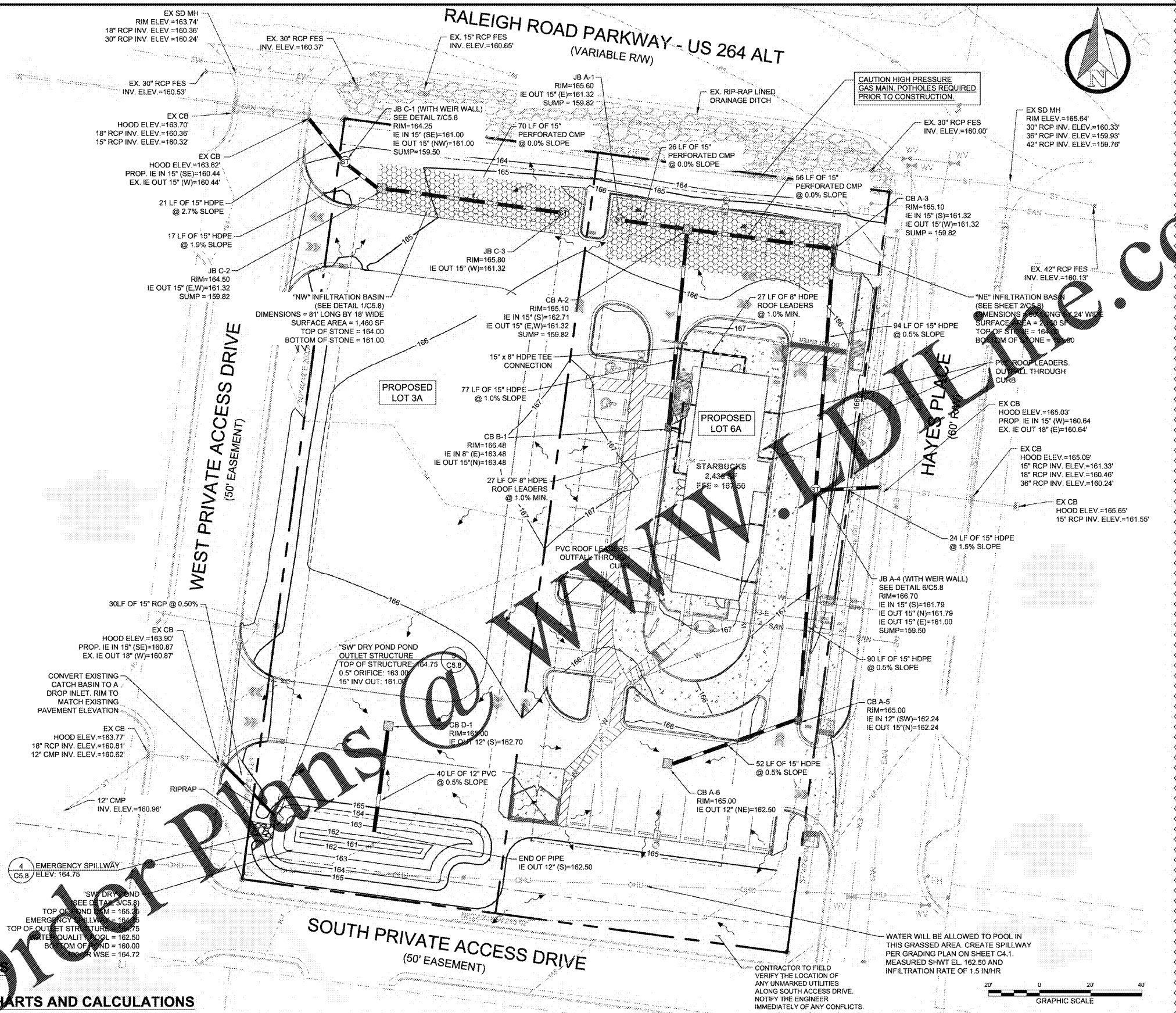
PROPOSED LOT 6
EXISTING PERVIOUS AREA = 0.790 AC
EXISTING IMPERVIOUS AREA = 0.0 AC
EXISTING BUILT-UPON AREA = 0%

PROPOSED LOT 8
EXISTING PERVIOUS AREA = 0.27 AC
EXISTING IMPERVIOUS AREA = 0.52 AC
EXISTING BUILT-UPON AREA = 65.8%

DRAINAGE LEGEND

- EXISTING STORM PIPE
- PROPOSED STORM PIPE
- CATCH BASIN/OUTLET STRUCTURE
- JUNCTION BOX
- DRAINAGE PATTERN
- RIPRAP

SEE SHEET C0.2 FOR STANDARD NOTES
SEE SHEET C4.1 FOR GRADING PLAN
SEE SHEET C4.3 FOR STORMWATER CHARTS AND CALCULATIONS



VICINITY MAP
1"=3000'

"UTILITY LOCATION NOTE"
THE UTILITIES ON THIS PLAN ARE APPROXIMATE ONLY AND ARE NOT ACCURATE FOR CONSTRUCTION PURPOSES. FOR FIELD LOCATIONS CALL 811 WITH THREE (3) WORKING DAYS MINIMUM NOTICE.

"INFILTRATION BASIN NOTE"
CONTRACTOR SHALL REFER TO THE EROSION CONTROL SEQUENCE ON SHEET C1.2 AND THE LANDSCAPE PLAN ON SHEET L2.1 FOR SPECIFIC CONSTRUCTION AND STABILIZATION REQUIREMENTS.

"SHWT AND INFILTRATION DATA"

SHWT AND INFILTRATION TESTS PER FIELD VISIT BY TERRACON, DATED 06/04/2020:

AT "SW" DRY POND: SHWT = 162.5±; INFILTRATION = 1.5 IN/HR
AT "NW" AND "NE" INFILTRATION AREAS: SHWT=159.0±; INFILTRATION = 12 IN/HR

IF THIS SHEET DOES NOT MEASURE 24"x36", IT HAS BEEN ENLARGED OR REDUCED. PLEASE ADJUST SCALE ACCORDINGLY.