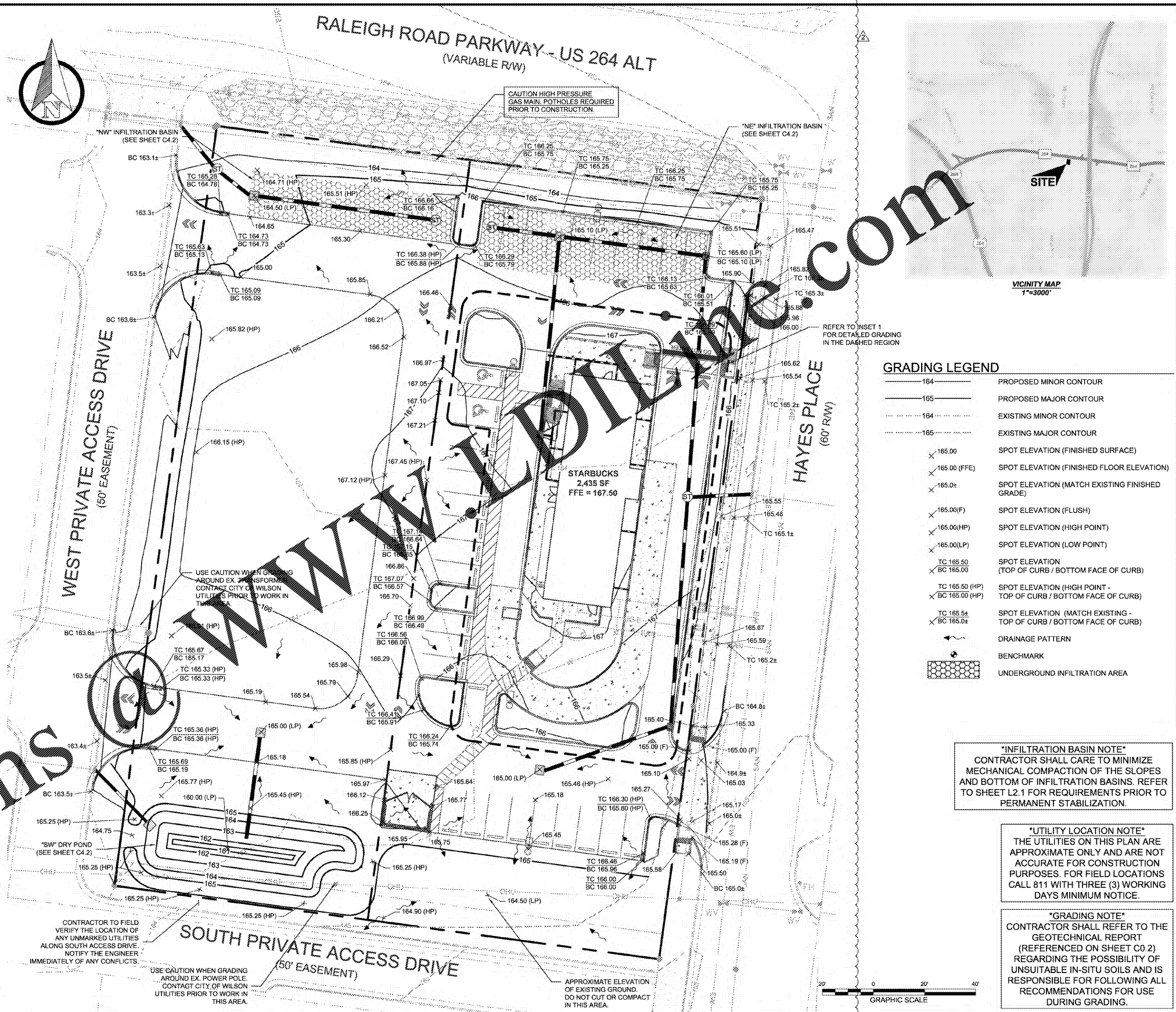


INSET 1

SEE SHEET C0.2 FOR STANDARD NOTES
SEE SHEET C4.2 FOR DRAINAGE PLAN



GRADING LEGEND

164	PROPOSED MINOR CONTOUR
165	PROPOSED MAJOR CONTOUR
164	EXISTING MINOR CONTOUR
165	EXISTING MAJOR CONTOUR
X 165.00	SPOT ELEVATION (FINISHED SURFACE)
X 165.00 (FFE)	SPOT ELEVATION (FINISHED FLOOR ELEVATION)
X 165.0+	SPOT ELEVATION (MATCH EXISTING FINISHED GRADE)
X 165.00 (F)	SPOT ELEVATION (FLUSH)
X 165.00 (HP)	SPOT ELEVATION (HIGH POINT)
X 165.00 (LP)	SPOT ELEVATION (LOW POINT)
TC 165.50 BC 165.00	SPOT ELEVATION (TOP OF CURB / BOTTOM FACE OF CURB)
TC 165.50 (HP) BC 165.00 (HP)	SPOT ELEVATION (HIGH POINT - TOP OF CURB / BOTTOM FACE OF CURB)
TC 165.5+ BC 165.0+	SPOT ELEVATION (MATCH EXISTING - TOP OF CURB / BOTTOM FACE OF CURB)
	DRAINAGE PATTERN
	BENCHMARK
	UNDERGROUND INFILTRATION AREA

"INFILTRATION BASIN NOTE"
CONTRACTOR SHALL CARE TO MINIMIZE MECHANICAL COMPACTION OF THE SLOPES AND BOTTOM OF INFILTRATION BASINS. REFER TO SHEET L2.1 FOR REQUIREMENTS PRIOR TO PERMANENT STABILIZATION.

"UTILITY LOCATION NOTE"
THE UTILITIES ON THIS PLAN ARE APPROXIMATE ONLY AND ARE NOT ACCURATE FOR CONSTRUCTION PURPOSES. FOR FIELD LOCATIONS CALL 811 WITH THREE (3) WORKING DAYS MINIMUM NOTICE.

"GRADING NOTE"
CONTRACTOR SHALL REFER TO THE GEOTECHNICAL REPORT (REFERENCED ON SHEET C0.2) REGARDING THE POSSIBILITY OF UNSUITABLE IN-SITU SOILS AND IS RESPONSIBLE FOR FOLLOWING ALL RECOMMENDATIONS FOR USE DURING GRADING.

ORIGINAL ISSUE DATE: 08/04/2020

REVISIONS:	
	PER STARBUCKS COMMENTS 08/19/2020
	PER CITY OF WILSON COMMENTS 08/31/2020



STARBUCKS - RALEIGH ROAD
REAL ZEAL PROPERTY GROUP
5019 RALEIGH ROAD PKWY W (LOT 6A) & 5025 RALEIGH ROAD PKWY W (LOT 3A)
WILSON, NORTH CAROLINA

8650 E. STATE ROAD 32
ZIONSVILLE, IN 48077
PHONE: 843-633-3579
EMAIL: KEVIN@TARR-GROUP.COM

GRADING PLAN

C4.1

19045-C4.1-GRADING.dwg

IF THIS SHEET DOES NOT MEASURE 24"x36", IT HAS BEEN ENLARGED OR REDUCED. PLEASE ADJUST SCALE ACCORDINGLY.