

JACKSON COUNTY  
ANIMAL RESCUE CENTER AND GREEN ENERGY  
PARK  
DILLSBORO, NORTH CAROLINA

SHEET	ISSUE	NO.	DATE	DESCRIPTION	BY
1	08/22/2020			ISSUE FOR 80+PERMIT	RMF

PRINCIPAL IN CHARGE: ALM  
PROJECT ENGINEER: CDC  
DRAWN BY: TMW

SHEET TITLE:  
ELECTRICAL  
LIGHTING PLAN

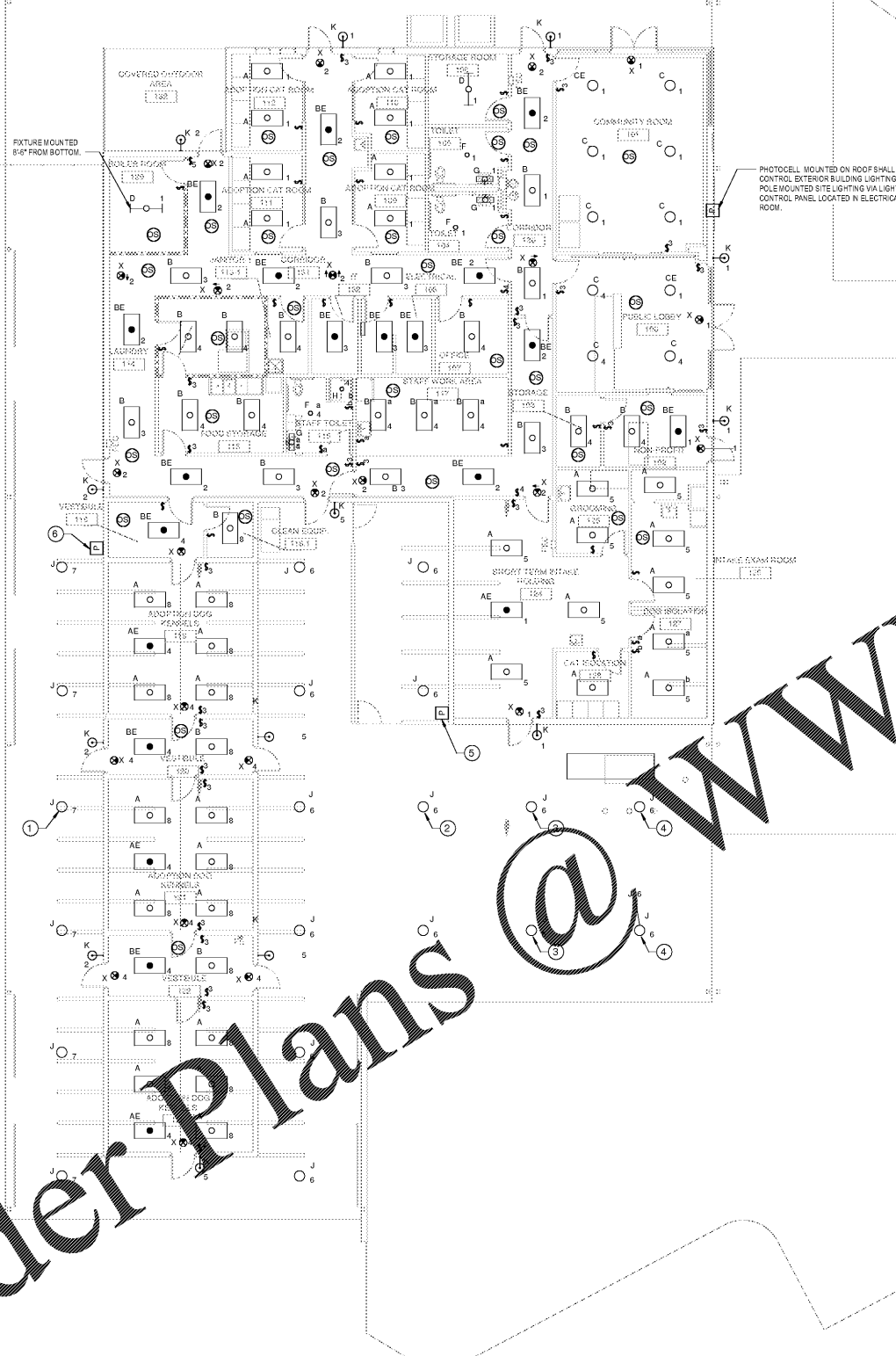
SHEET NO. PROJ. NO.  
E-201 019216.00

GENERAL NOTES

- A. ALL EMERGENCY CIRCUIT SHALL BE WIRED TO PANEL EM AND ALL NORMAL CIRCUIT SHALL BE WIRED PANEL B UNLESS NOTED OTHERWISE.
- B. PROVIDE UL924 RELAY DEVICE IN EACH ROOM CONTAINING SWITCHED EMERGENCY LIGHTING CIRCUIT.

DRAWING NOTES

- 1 TYPE "J" LIGHT FIXTURES ALONG WEST SIDE OF BUILDING EXTERIOR SHALL BE MOUNTED ON 1" STEM, TYPICAL OF 6.
- 2 TYPE "J" LIGHT FIXTURES ALONG THE CENTER OF BUILDING EXTERIOR SHALL BE MOUNTED ON 8" OR (22 1/2") STEMS, TYPICAL OF 10 FIXTURES.
- 3 TYPE "J" LIGHT FIXTURE SHALL BE MOUNTED ON 6" STEM.
- 4 TYPE "J" LIGHT FIXTURE SHALL BE MOUNTED ON 12" STEM.
- 5 PHOTOCELL MOUNTED ON WALL SHALL CONTROL EXTERIOR LIGHTING UNDER SALLY PORT VIA LIGHTING CONTROL PANEL LOCATED IN ELECTRICAL ROOM.
- 6 PHOTOCELL MOUNTED ON WALL SHALL CONTROL EXTERIOR LIGHTING UNDER SALLY PORT ON WEST SIDE OF BUILDING VIA LIGHTING CONTROL PANEL LOCATED IN ELECTRICAL ROOM.



FIRE RATED WALL



Order Plans @ www.LDILine.com

ALL RIGHTS RESERVED. NO PART OF THIS DOCUMENT SHALL BE REPRODUCED OR TRANSMITTED IN ANY FORM OR BY ANY MEANS, ELECTRONIC OR MECHANICAL, INCLUDING PHOTOCOPYING, RECORDING, OR BY ANY INFORMATION STORAGE AND RETRIEVAL SYSTEM, WITHOUT THE WRITTEN PERMISSION OF THE ARCHITECT. THE ARCHITECT'S LIABILITY IS LIMITED TO THE PROFESSIONAL SERVICES PROVIDED HEREIN. THE ARCHITECT DOES NOT WARRANT OR REPRESENT THAT THE INFORMATION CONTAINED HEREIN IS COMPLETE, ACCURATE, OR CURRENT. THE ARCHITECT'S LIABILITY IS LIMITED TO THE PROFESSIONAL SERVICES PROVIDED HEREIN. THE ARCHITECT DOES NOT WARRANT OR REPRESENT THAT THE INFORMATION CONTAINED HEREIN IS COMPLETE, ACCURATE, OR CURRENT.