

CONTRACT LOAD

rmf RMF ENGINEERING, INC.
8720 Red Oak Blvd., Suite 370
Charlotte, NC 28217
NC License No.: C-1126
Project No.: 219385-AG
www.rmfi.com



JACKSON COUNTY

ANIMAL RESCUE CENTER AND GREEN ENERGY
PARK

DILLSBORO, NORTH CAROLINA

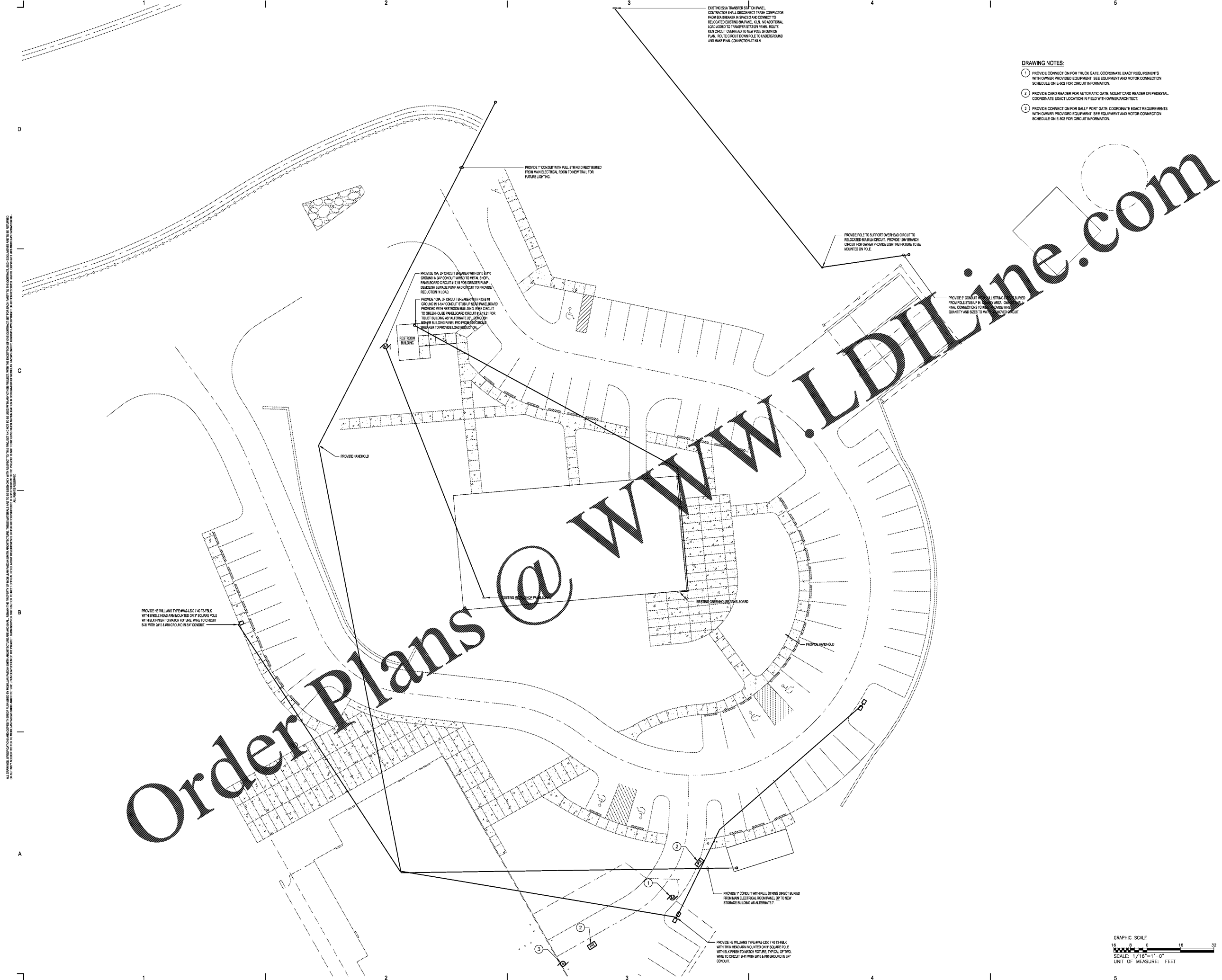
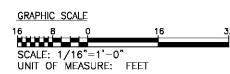
SHEET ISSUE				
NO.	DATE	DESCRIPTION	BY	
1	09/2/2020	ISSUE FOR BID/PERMIT	RMF	

PRINCIPAL IN CHARGE: ALM
PROJECT ENGINEER: CDC
DRAWN BY: TWM
SHEET TITLE:
ELECTRICAL SITE PLAN

SHEET NO. PROJ. NO.
E002 019218.00

DRAWING NOTES:

- 1 PROVIDE CONNECTION FOR TRUCK GATE. COORDINATE EXACT REQUIREMENTS WITH OWNER PROVIDED EQUIPMENT. SEE EQUIPMENT AND MOTOR CONNECTION SCHEDULE ON E-602 FOR CIRCUIT INFORMATION.
- 2 PROVIDE CARD READER FOR AUTOMATIC GATE. MOUNT CARD READER ON PEDESTAL. COORDINATE EXACT LOCATION IN FIELD WITH OWNER/ARCHITECT.
- 3 PROVIDE CONNECTION FOR SALLY PORT GATE. COORDINATE EXACT REQUIREMENTS WITH OWNER PROVIDED EQUIPMENT. SEE EQUIPMENT AND MOTOR CONNECTION SCHEDULE ON E-602 FOR CIRCUIT INFORMATION.



ALL DRAWINGS, SPECIFICATIONS AND NOTES ARE THE PROPERTY OF MCMILLAN PAZDAN SMITH ARCHITECTURE. THESE DRAWINGS ARE TO BE USED ONLY FOR THE PROJECT AND SITE SPECIFICALLY IDENTIFIED THEREON. ANY REUSE OR MODIFICATION OF THESE DRAWINGS WITHOUT THE WRITTEN CONSENT OF MCMILLAN PAZDAN SMITH ARCHITECTURE IS STRICTLY PROHIBITED. THE USER ASSUMES ALL LIABILITY FOR ANY ERRORS, OMISSIONS, OR INADEQUACIES IN THESE DRAWINGS. THE USER SHALL INDEMNIFY AND HOLD HARMLESS MCMILLAN PAZDAN SMITH ARCHITECTURE FROM AND AGAINST ALL CLAIMS, DAMAGES, LOSSES, AND EXPENSES, INCLUDING REASONABLE ATTORNEY'S FEES, ARISING OUT OF OR RESULTING FROM THE USE OF THESE DRAWINGS. THIS AGREEMENT SHALL BE GOVERNED BY THE LAWS OF THE STATE OF NORTH CAROLINA.

Order Plans @ www.LDILine.com