

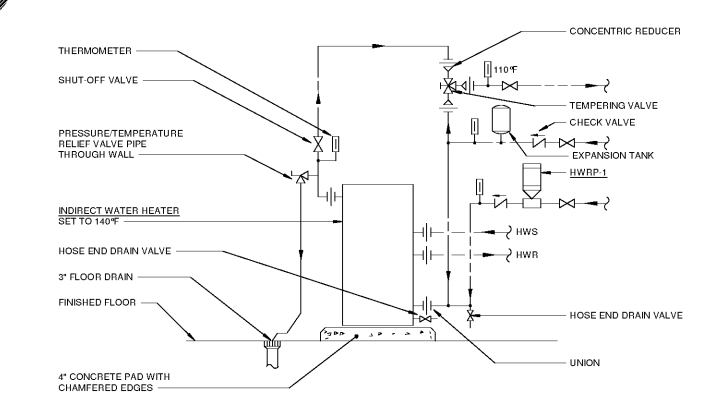
- NOTES:**
- HANGER SPACING SHALL BE IN ACCORDANCE WITH THE PROJECT SPECIFICATIONS.
  - PROVIDE SEISMIC SWAY BRACING FOR ALL PIPE HANGERS PER THE 2006 INTERNATIONAL BUILDING CODE AND THE 2006 INTERNATIONAL MECHANICAL CODE.
  - CONTRACTOR SHALL VERIFY MAXIMUM LOADING ON PIPE SUPPORT ASSEMBLIES.

LOAD SCHEDULE		
PIPE SIZE	MAXIMUM SPACING	ROD SIZE
1/2"-2"	7'	1/2"
2 1/2"-3"	10'	3/4"
4"-5"	14'	3/4"
6"	17'	3/4"
8"	19'	3/4"
10"	22'	7/8"
12"	23'	7/8"
14"	25'	1"
16"	27'	1"
18"	28'	1"
20"	30'	1 1/4"

DETAIL PIPE HANGER

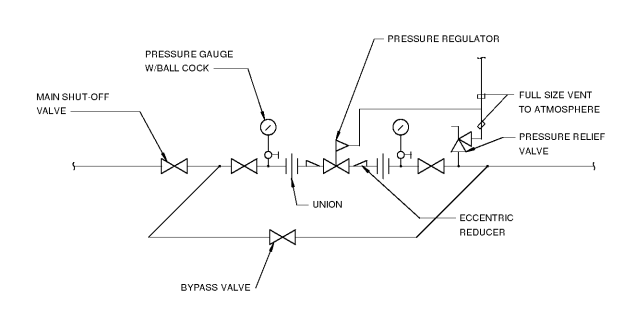
SCALE: NONE 1

Order Plans @



DETAIL - INDIRECT WATER HEATER (WITH RECIRC PUMP)

SCALE: NONE 3



- NOTES:**
- APPLIES TO MAIN SERVICE AT 2 PSIG AND 8" WC.
  - EXTEND VENTS TO NEAREST OUTDOOR LOCATION W/TURN-DOWN ELBOW & SCREEN.

DETAIL - GAS REGULATOR PIPING

SCALE: NONE 2

SHEET ISSUE

NO.	DATE	DESCRIPTION	BY
1	09/02/2020	ISSUE FOR BID + PERMIT	RMF

PRINCIPAL IN CHARGE:  
PROJECT ARCHITECT:  
DRAWN BY: MRT  
SHEET TITLE:  
**PLUMBING DETAILS**

SHEET NO. PROJ. NO.  
019216.00