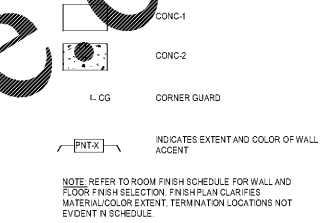


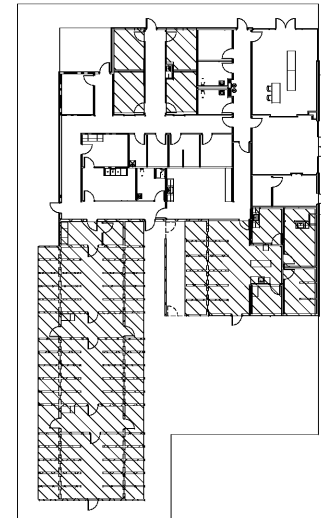
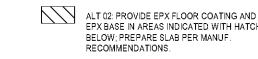
FINISH PLAN GENERAL NOTES

- A. ALL FINISHES ARE BASED ON PLAN NORTH NOT TRUE NORTH.
- B. REF. FINISHES & MATERIALS SCHEDULE FOR FINISH MATERIAL INFORMATION AND ROOM FINISH SCHEDULE FOR SELECTIONS. REFER TO FINISH PLANS FOR EXTENT OF FLOOR AND WALL FINISH ACCENT LOCATIONS AND PATTERNS.
- C. ALL ACCESS PANELS, SPRINKLER HEADS, AND OTHER SIMILAR ITEMS SHALL BE PAINTED TO MATCH THE COLOR OF THE SURROUNDING WALL OR CEILING UNLESS OTHERWISE NOTED.
- D. ALL ITEMS EXPOSED TO VIEW SHALL BE PAINTED OR STAINED UNLESS PREFINISHED BY MANUFACTURER OR UNLESS OTHERWISE NOTED.
- E. REFER TO RCP FOR CEILING TYPES AND EXTENTS. REF. CEILING COLUMN IN ROOM FINISH SCHEDULE FOR APPLICABLE CEILING, SOFFIT, AND BULKHEAD FINISHES.
- F. ALL HORIZONTAL AND VERTICAL SURFACES OF SOFFITS TO MATCH ADJACENT WALLS UNLESS OTHERWISE NOTED.
- G. ALL DOORS, DOOR FRAMES AND MULLIONS DESIGNATED TO RECEIVE PAINT SHALL HAVE SEMI-GLOSS FINISH.
- H. REFER TO FINISHES & MATERIALS SCHEDULE FOR WALL & COLUMN PAINT FINISHES AND REFER TO ROOM FINISH SCHEDULE FOR LOCATIONS.
- I. CONTRACTOR SHALL NOTIFY ARCHITECT OF ANY EXPOSED SURFACE NOT HAVING A FINISH SPECIFIED BEFORE STARTING CONSTRUCTION.
- J. INSTALLATION OF FINISHES SHALL COMPLY WITH MANUFACTURER'S INSTALLATION SPECIFICATION REQUIREMENTS.
- K. PRODUCTS INDICATED ARE BASIS OF DESIGN. REFER TO SPECIFICATIONS FOR ADDITIONAL INFORMATION PER PRODUCT TYPE INDICATED.
- L. FLOOR MATERIAL TRANSITIONS SHALL OCCUR AT THE CENTERLINE OF THE DOOR WHILE IN THE CLOSED POSITION UNLESS OTHERWISE NOTED.
- M. TRANSITION STRIPS SHALL BE PROVIDED FOR ALL CHANGES IN FLOOR MATERIAL AND HEIGHT.
- N. USE APPROPRIATE SUBFLOOR LEVELER WHERE FLOOR MATERIAL TRANSITION DOES NOT MEET FLUSH AND/OR WHEN MATERIAL HEIGHT IS NOT SATISFACTORY. TRANSITION STRIP TOLERANCE.

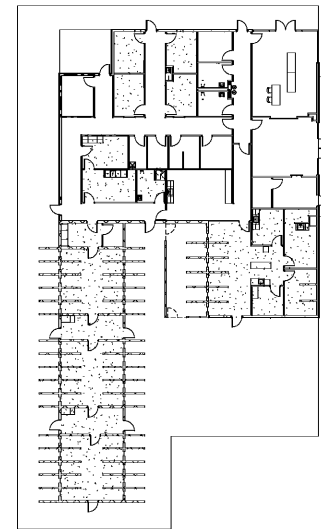
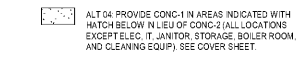
FINISH PLAN LEGEND



ALT 02



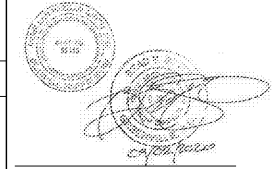
ALT 04



mcmillan
pazdan
smith
ARCHITECTURE

CONSULTANT LOGO

SCALE



JACKSON COUNTY
ANIMAL RESCUE CENTER AND GREEN ENERGY PARK
DILLSBORO, NORTH CAROLINA

SHEET ISSUE NO.	DATE	DESCRIPTION	BY
1	9/22/2020	ISSUE FOR BID + PERMIT	

PRINCIPAL IN CHARGE
PROJECT ARCHITECT
DRAWN BY:
SHEET TITLE:
FINISH SCHEDULE AND PLAN

SHEET NO.
A900
PROJ. NO.
0192860

ITEM	ABBR	COLOR	Comments	Location
ACOUSTICAL CEILING TILE	CTB-1	WHITE	AS SCHEDULED	
CERAMIC TILE BASE	CTB-1	WHITE	COVE BASE, 3"x6" SUBWAY TILE	
CERAMIC WALL TILE	CT-1	WHITE	3"x6" SUBWAY TILE OVER MOISTURE RESISTANT GWB AND TILE BACKING; BULLNOSE TOP EDGE	
CONCRETE	CONC-1	POLISHED, NO TINT	AS SCHEDULED	
CONCRETE	CONC-2	SEALED	AS SCHEDULED	
GYP-SUM CEILING BOARD	GCB-1	WHITE	AS SCHEDULED	
PAINT	PNT-1	TBD	INTERIOR PAINT	
PAINT	PNT-1.1	TBD-ACCENT COLOR	INTERIOR PAINT ACCENT COLOR	
PAINT	PNT-2	TBD	INTERIOR PAINT OVER SHOP PRIMER (NON-ANIMAL, STANDARD EXP STEEL)	
PAINT	PNT-3	TBD	EXTERIOR PAINT ON SIDING	
PAINT	PNT-4	TBD	EXTERIOR PAINT ON CMU (HIGH-NON-ANIMAL)	
PAINT	PNT-5	TBD	EXTERIOR PAINT ON STEEL (HIGH-NON-ANIMAL)	
PAINT	PNT-6	TBD	HIGH PERFORMANCE PAINT ON CMU (LOW ANIMAL/CLEANING ZONE)	
PAINT	PNT-6.1	TBD-ACCENT COLOR	HIGH PERFORMANCE PAINT ACCENT COLOR ON CMU (LOW ANIMAL/CLEANING ZONE)	
PAINT	PNT-7	TBD	HIGH PERFORMANCE PAINT ON STEEL (LOW ANIMAL/CLEANING ZONE)	
PAINT	PNT-8	TBD	TRANSPARENT WOOD STAIN	
PLASTIC LAMINATE	PLAM-1	TBD	PER MILLWORK DRAWINGS	
PLASTIC LAMINATE	PLAM-2	TBD	PER MILLWORK DRAWINGS	
RESINOUS EPOXY FLOOR	EPX	FLAKED	3 COLORS FROM MANUF. STANDARD RANGE	
RUBBER BASE	RB-1	TBD	AS SCHEDULED	
SOLID SURFACE	SS-1	TBD	PER MILLWORK DRAWINGS	
SOLID SURFACE	SS-2	TBD	PER MILLWORK DRAWINGS	

ROOM NO.	ROOM NAME	FLOOR		WALLS				CEILING MATERIAL	COMMENTS
		FINISH	BASE	N	E	S	W		
100	PUBLIC LOBBY	CONC-1	RB-1	PNT-1	PNT-1	PNT-1	PNT-1.1		
101	COMMUNITY ROOM	CONC-1	RB-1	PNT-1	PNT-1	PNT-1	PNT-1.1		
102	NON-PROFIT	CONC-1	RB-1	PNT-1	PNT-1	PNT-1	PNT-1.1		
103	STORAGE	CONC-2	RB-1	PNT-1	PNT-1	PNT-1	ACT-1		
104	TOILET	CONC-1	CTB-1	CT-1	PNT-1	PNT-1	GCB-1		
105	TOILET	CONC-1	CTB-1	CT-1	PNT-1	PNT-1	GCB-1		
106	STORAGE ROOM	CONC-2	RB-1	PNT-1	PNT-1	PNT-1	ACT-1		
107	OFFICE	CONC-1	RB-1	PNT-1	PNT-1	PNT-1	ACT-1		
108	ELECTRICAL	CONC-2	RB-1	PNT-1	PNT-1	PNT-1	ACT-1		
109	ADOPTION CAT ROOM	CONC-2	RB-1	PNT-1	PNT-1	PNT-1	ACT-1	PROVIDE HOLD-DOWN CLIPS AT CEILING	
110	ADOPTION CAT ROOM	CONC-2	RB-1	PNT-1	PNT-1	PNT-1	ACT-1	PROVIDE HOLD-DOWN CLIPS AT CEILING	
111	ADOPTION CAT ROOM	CONC-2	RB-1	PNT-1	PNT-1	PNT-1	ACT-1	PROVIDE HOLD-DOWN CLIPS AT CEILING	
112	ADOPTION CAT ROOM	CONC-2	RB-1	PNT-1	PNT-1	PNT-1	ACT-1	PROVIDE HOLD-DOWN CLIPS AT CEILING	
113	JANITOR	CONC-2	RB-1	PNT-1	PNT-1	PNT-1	ACT-1		
114	LAUNDRY	CONC-2	RB-1	PNT-1	PNT-1	PNT-1	ACT-1		
115	FOOD STORAGE	CONC-2	RB-1	PNT-1	PNT-1	PNT-1	ACT-1		
116	STAFF TOILET	CONC-2	CTB-1	CT-1	PNT-1	PNT-1	ACT-1		
117	STAFF WORK AREA	CONC-1	RB-1	PNT-1.1	PNT-1	PNT-1	ACT-1		
118	VESTIBULE	CONC-2	RB-1	PNT-1	PNT-1	PNT-1	ACT-1	DOORS/FRAMES PNT-7	
118.1	CLEAN EQUIP	CONC-2	RB-1	PNT-1	PNT-1	PNT-1	ACT-1	DOORS/FRAMES PNT-7	
119	ADOPTION DOG KENNELS	CONC-2	PNT-6	PNT-6	PNT-6	PNT-6	ACT-1	PAINT TOP OF LOW KENNEL WALLS PNT-6; DOORS/FRAMES PNT-7	
120	VESTIBULE	CONC-2	PNT-6	PNT-6	PNT-6	PNT-6	ACT-1	DOORS/FRAMES PNT-7	
121	ADOPTION DOG KENNELS	CONC-2	PNT-6	PNT-6	PNT-6	PNT-6	ACT-1	PAINT TOP OF LOW KENNEL WALLS PNT-6; DOORS/FRAMES PNT-7	
122	VESTIBULE	CONC-2	PNT-6	PNT-6	PNT-6	PNT-6	ACT-1	DOORS/FRAMES PNT-7	
123	ADOPTION DOG KENNELS	CONC-2	PNT-6	PNT-6	PNT-6	PNT-6	ACT-1	PAINT TOP OF LOW KENNEL WALLS PNT-6; DOORS/FRAMES PNT-7	
124	SHORT TERM INTAKE HOLDING	CONC-2	PNT-6	PNT-6	PNT-6	PNT-6	ACT-1	PAINT TOP OF LOW KENNEL WALLS PNT-6; DOORS/FRAMES PNT-7	
125	GROOMING	CONC-2	RB-1	FRP	FRP	FRP	FRP	DOORS/FRAMES PNT-7	
126	INTAKE EXAM ROOM	CONC-2	RB-1	FRP	FRP	FRP	FRP	DOORS/FRAMES PNT-7	
127	DOG ISOLATION	CONC-2	RB-1	FRP	FRP	FRP	FRP	DOORS/FRAMES PNT-7	
128	CAT ISOLATION	CONC-2	RB-1	FRP	FRP	FRP	FRP	DOORS/FRAMES PNT-7	
129	BOILER ROOM	CONC-2	RB-1	PNT-1	PNT-1	PNT-1	PNT-1		
130	CORRIDOR	CONC-1	RB-1	PNT-1	PNT-1	PNT-1	CT-1		
131	CORRIDOR	CONC-1	RB-1	PNT-1.1.1	PNT-1.1	PNT-1.1	CT-1		SEE FINISH PLAN FOR LOCATION OF PNT-1.1
132	IT	CONC-2	RB-1	PNT-1	PNT-1	PNT-1	ACT-1		

HM DOORS AND FRAMES REQUIRING HIGH PERFORMANCE PAINT PNT-6. NOTE: SCHEDULED DOORS AND FRAMES NOT NOTED ARE TO RECEIVE PNT-2.

