

GENERAL WINDOW NOTES

- A. DIMENSIONS GIVEN ARE NOMINAL FRAME OPENING
- B. SILL HEIGHT Varies SEE FLOOR PLANS AND ELEVATIONS
- C. SEE EXTERIOR ELEVATIONS AND SECTIONS FOR EXTERIOR WALL CONSTRUCTION. REFER TO TYPICAL WINDOW HEAD, JAMB, AND SILL DETAILS

ALUMINUM STOREFRONT NOTES

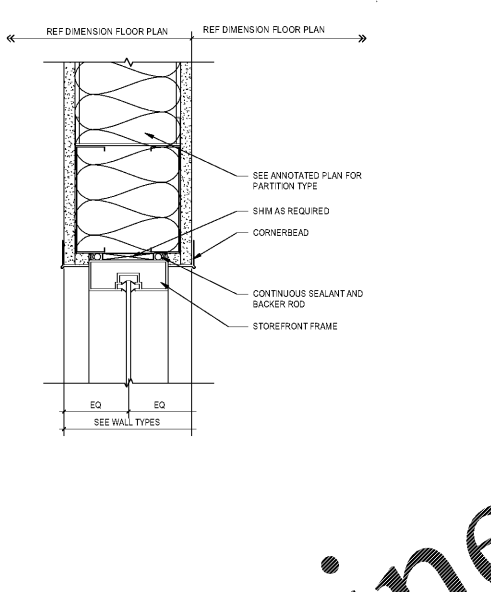
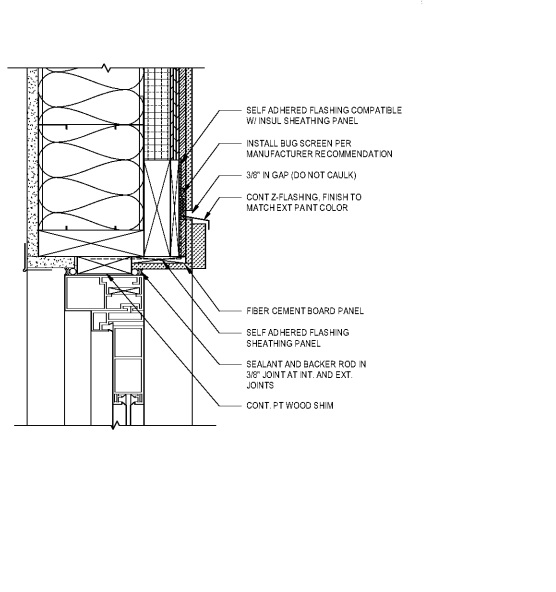
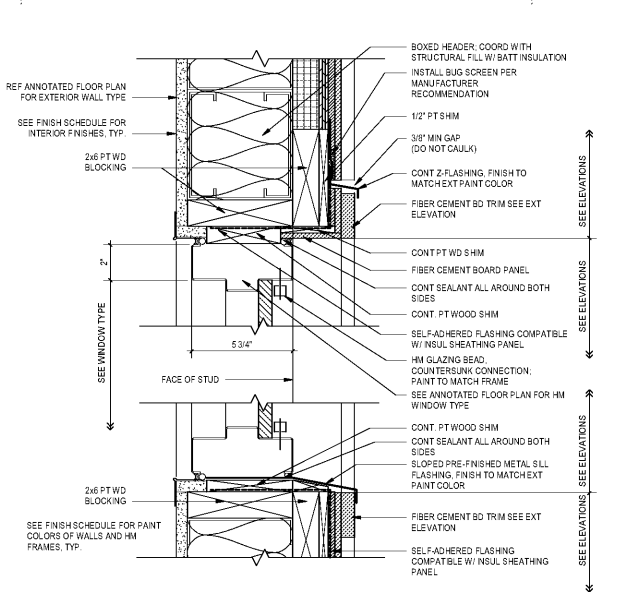
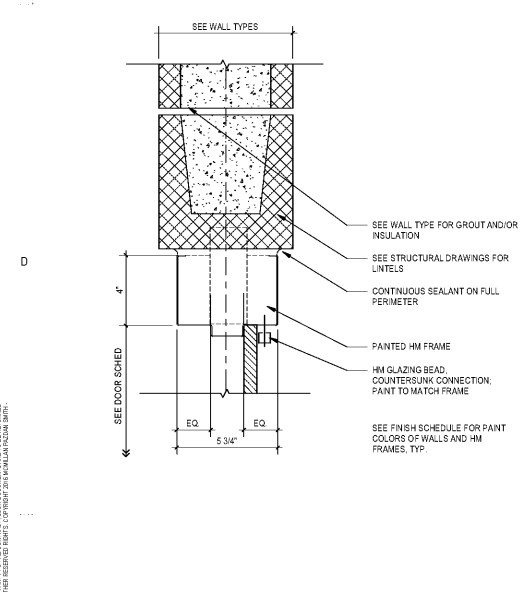
- A. ALL EXTERIOR ALUMINUM-FRAMED ENTRANCES AND STOREFRONT TO HAVE CLEAR ANODIZED ALUMINUM FINISH
- B. ALL INTERIOR ALUMINUM-FRAMED ENTRANCES AND STOREFRONTS TO HAVE CLEAR ANODIZED ALUMINUM FINISH
- C. STOREFRONTS TO HAVE CONTINUOUS HEAD AND JAMB FILLERS. SET IN CONTINUOUS SEALANT
- D. DOOR THRESHOLDS TO BE SET IN CONTINUOUS SEALANT
- E. PERIMETER JOINT BETWEEN FRAME AND ROUGH OPENING SHOULD BE 3/8" MINIMUM AND 5/8" MAXIMUM FOR ALL STOREFRONT ASSEMBLIES
- F. REFER TO EXTERIOR FLOOR PLANS AND EXTERIOR ELEVATIONS FOR STOREFRONT PLACEMENT. HEAD, JAMB, AND SILL DETAILS ARE TYPICAL OF THE WALL CONDITIONS WHERE STOREFRONT IS LOCATED.
- G. ALL ALUMINUM STOREFRONT TO HAVE 1" GLAZING
- H. GENERAL CONTRACTOR TO FIELD VERIFY ALL OPENINGS

GLAZING LEGEND

- (1) INDICATES TEMPERED GLAZING
- GL-1: 1/4" CLEAR FULLY TEMPERED FLOAT GLASS
- GL-2: 1" SEALED INSULATED GLAZING

NOTE

- A. ALL INTERIOR WINDOW ASSEMBLIES INCLUDING DOORS AND FIXED GLAZING TO HAVE GLASS UNLESS NOTED OTHERWISE
- B. ALL EXTERIOR ALUMINUM-FRAMED ENTRANCES AND STOREFRONTS TO HAVE GL-2 GLASS UNLESS OTHERWISE NOTED
- C. ALL GLAZING DOORS TO BE TEMPERED
- D. REFER TO FLOOR PLANS FOR ADDITIONAL GLAZING DESIGNATION
- E. GENERAL CONTRACTOR TO FIELD VERIFY ALL OPENINGS

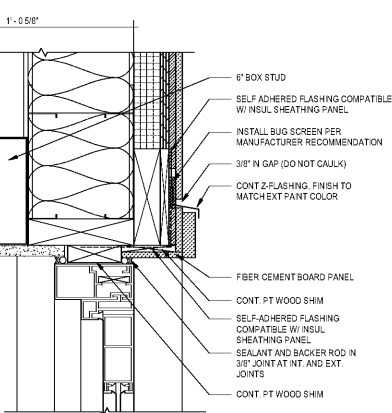
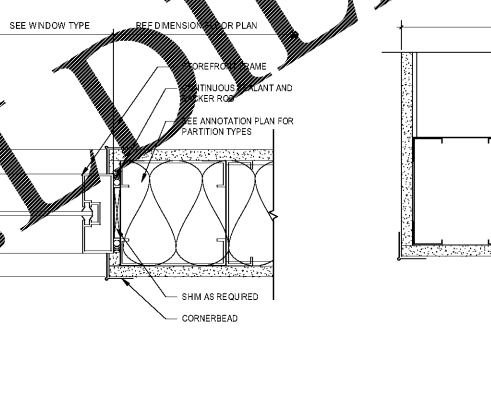
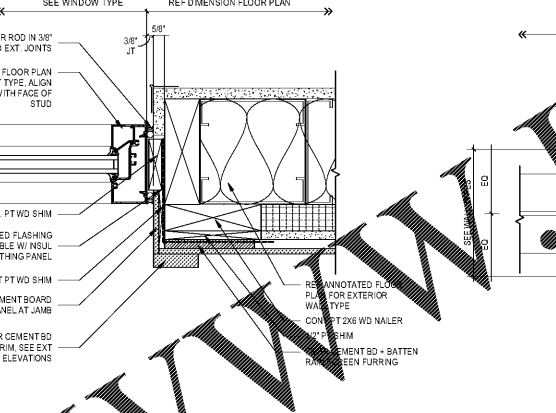
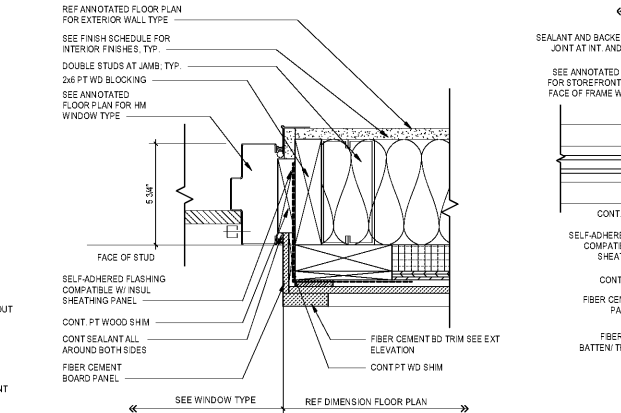
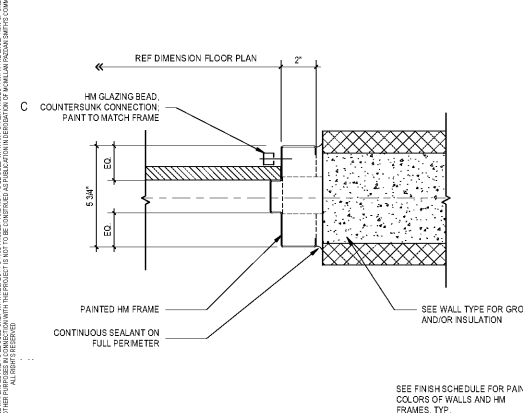


D1 HM WINDOW HEAD/ SILL AT MASONRY WALL
3" x 1'-0"

D2 HM WINDOW HEAD/ SILL AT EXTERIOR STUD WALL
3" x 1'-0"

D3 STOREFRONT HEAD AT EXTERIOR STUD WALL
3" x 1'-0"

D4 STOREFRONT HEAD AT INTERIOR STUD WALL
3" x 1'-0"



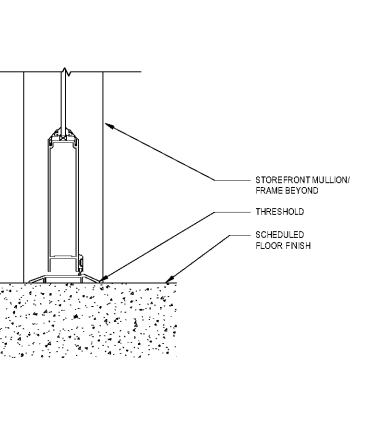
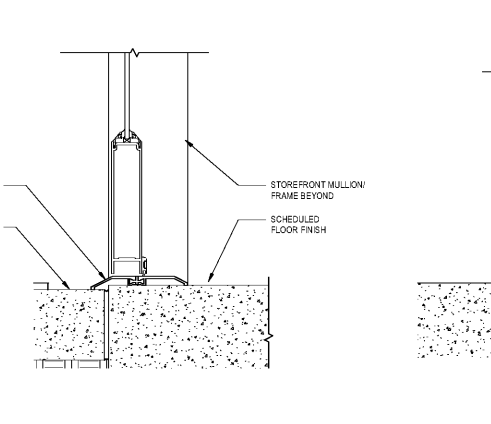
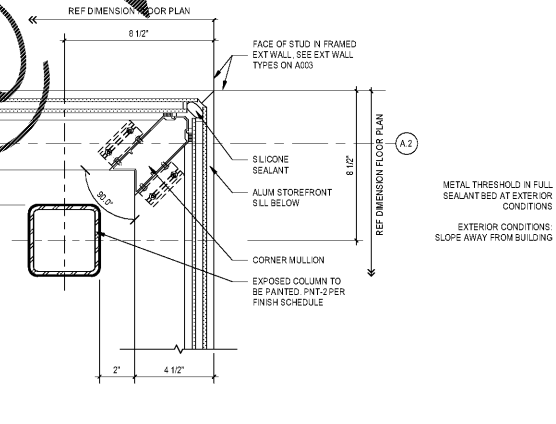
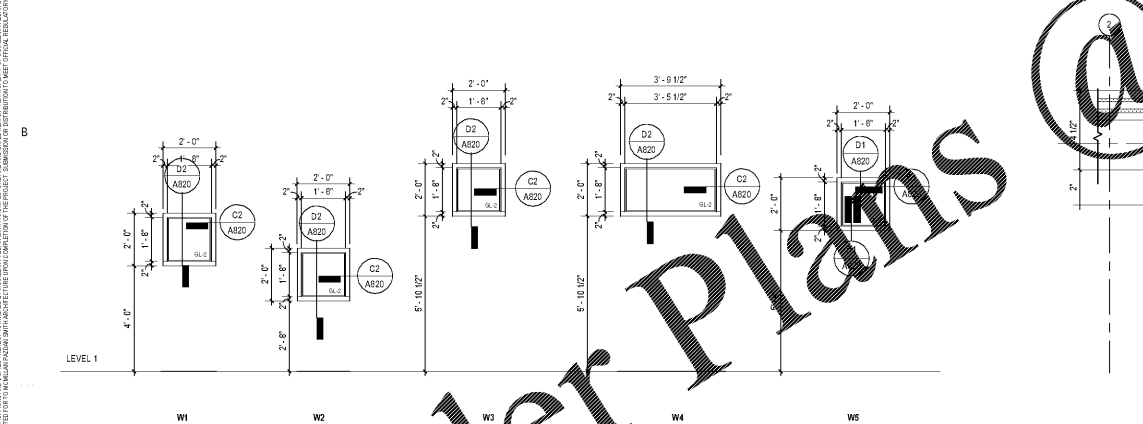
C1 HM WINDOW JAMB AT MASONRY WALL
3" x 1'-0"

C2 HM WINDOW JAMB AT EXTERIOR STUD WALL
3" x 1'-0"

C3 STOREFRONT JAMB AT EXTERIOR STUD WALL
3" x 1'-0"

C4 STOREFRONT JAMB AT INTERIOR STUD WALL
3" x 1'-0"

C5 STOREFRONT HEAD AT EXTERIOR STUD WALL W/ SOFFIT
3" x 1'-0"

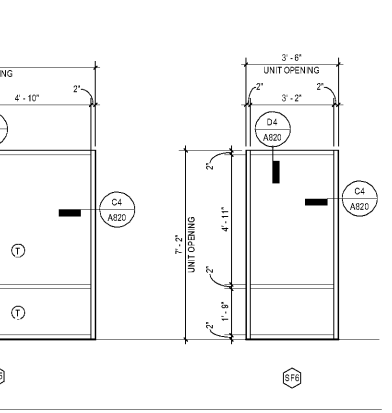
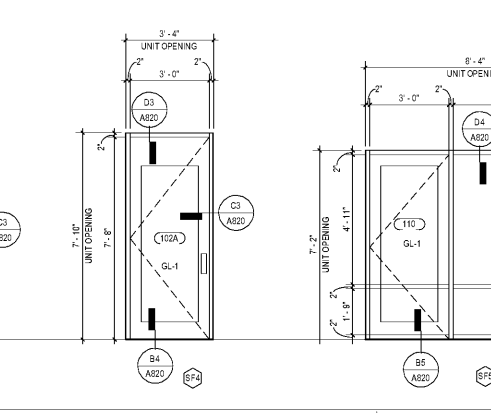
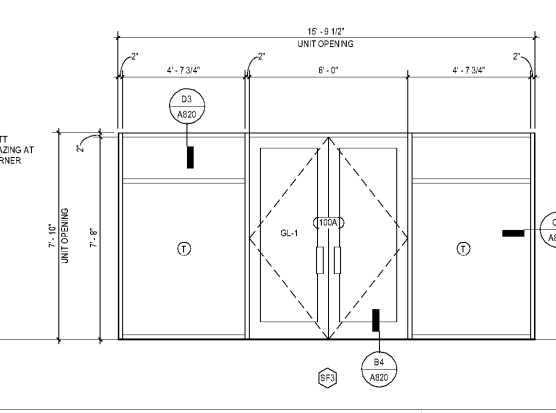
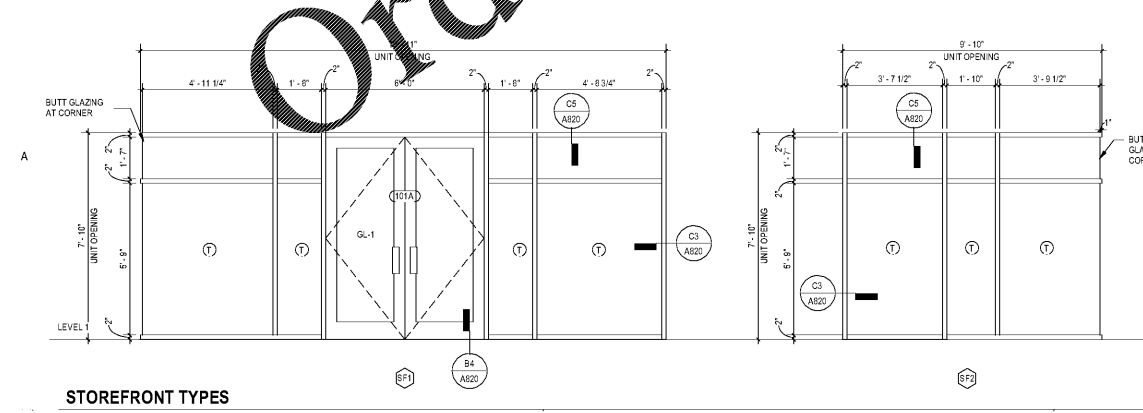


HOLLOW METAL WINDOW TYPES

B3 BUTT GLAZING CORNER DETAIL
3" x 1'-0"

B4 SECTION THROUGH EXTERIOR STOREFRONT SILL
3" x 1'-0"

B5 SECTION THROUGH INTERIOR STOREFRONT SILL
3" x 1'-0"



A STOREFRONT TYPES

B3 BUTT GLAZING CORNER DETAIL
3" x 1'-0"

B4 SECTION THROUGH EXTERIOR STOREFRONT SILL
3" x 1'-0"

B5 SECTION THROUGH INTERIOR STOREFRONT SILL
3" x 1'-0"

JACKSON COUNTY
ANIMAL RESCUE CENTER AND GREEN ENERGY PARK
DILLSBORO, NORTH CAROLINA

SHEET ISSUE NO.	DATE	DESCRIPTION	BY
1	9/22/2020	ISSUE FOR BID + PERMIT	

PRINCIPAL IN CHARGE
PROJECT ARCHITECT
DRAWN BY:
SHEET TITLE:
WINDOW AND STOREFRONT ELEVATIONS
SHEET NO.
PROJ. NO. 01216.00

A820

Order Plans

WWW.DLine.com

NOT TO SCALE. SEE FINISH SCHEDULES FOR PAINT COLORS OF WALLS AND HM FRAMES, TYP. SEE ANNOTATED FLOOR PLANS FOR WINDOW TYPES AND STOREFRONT TYPES. SEE EXTERIOR ELEVATIONS AND SECTIONS FOR EXTERIOR WALL CONSTRUCTION. REFER TO TYPICAL WINDOW HEAD, JAMB, AND SILL DETAILS. GENERAL CONTRACTOR TO FIELD VERIFY ALL OPENINGS.