

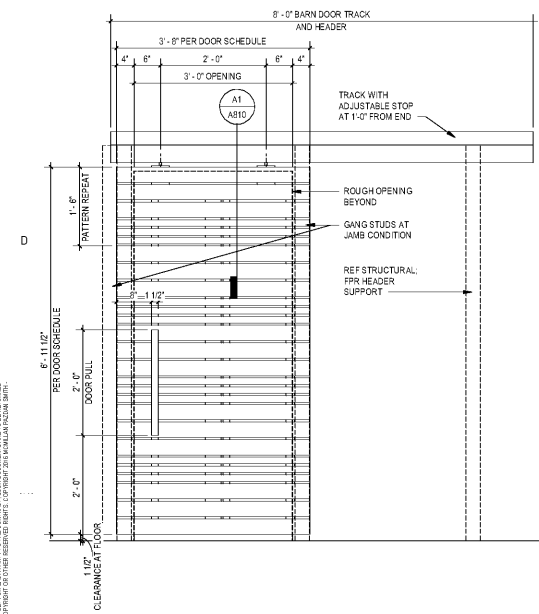
JACKSON COUNTY  
ANIMAL RESCUE CENTER AND GREEN ENERGY  
PARK  
DILLSBORO, NORTH CAROLINA

SHEET ISSUE			
NO.	DATE	DESCRIPTION	BY
1	9/22/2020	ISSUE FOR BID + PERMIT	

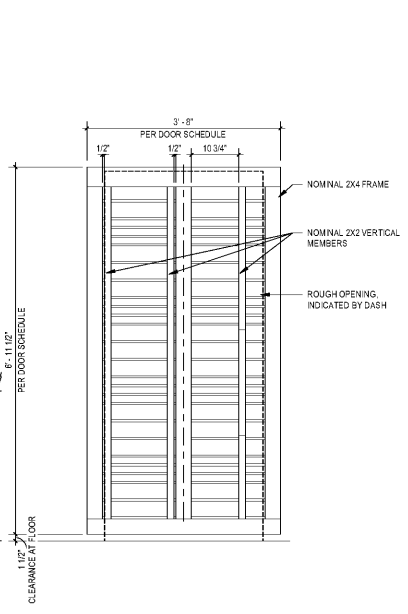
PRINCIPAL IN CHARGE  
PROJECT ARCHITECT  
DRAWN BY:  
SHEET TITLE:  
BARN DOOR  
DETAILS

SHEET NO. PROJ. NO.  
019216.00

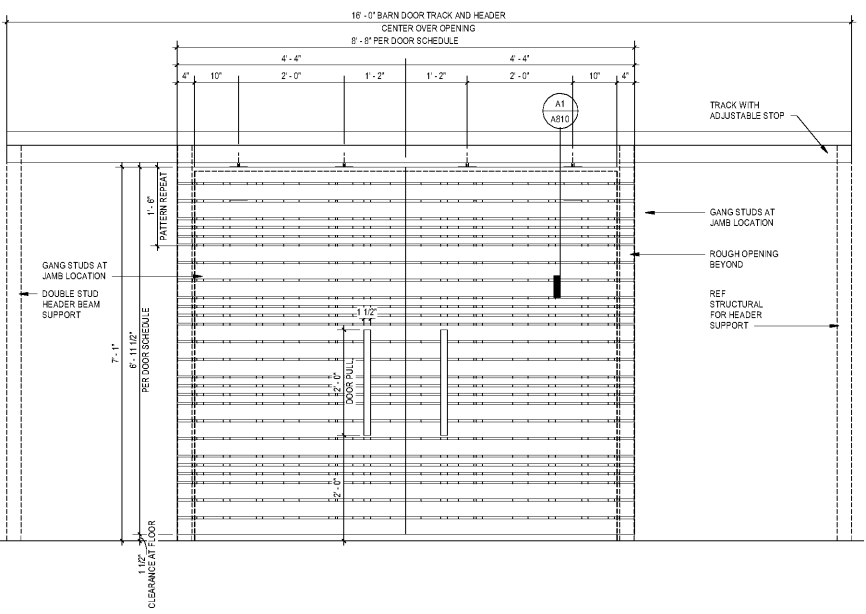
A810



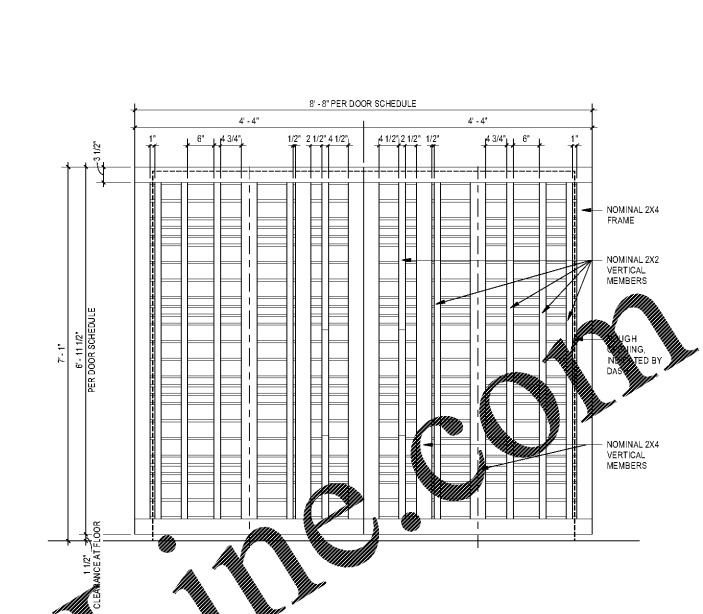
D1 TYPE D1 SINGLE  
A810 3/4" x 1'-0"



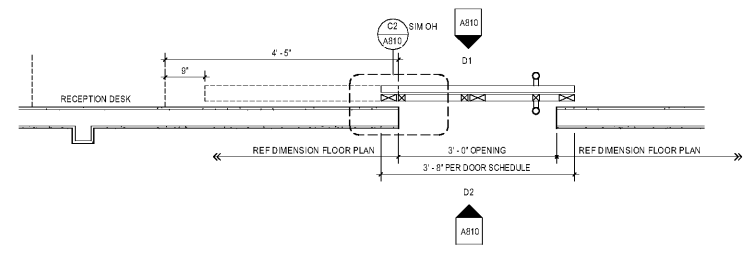
D2 TYPE D1 SINGLE BACK  
A810 3/4" x 1'-0"



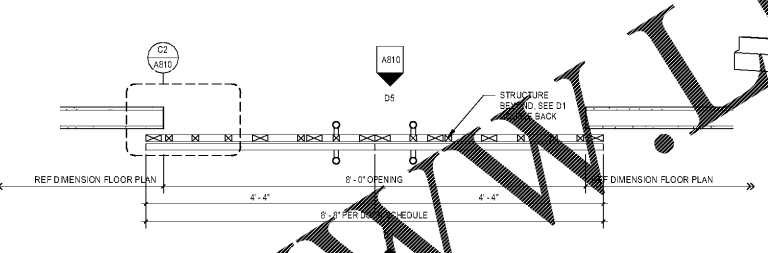
D3 TYPE D1 DOUBLE  
A810 3/4" x 1'-0"



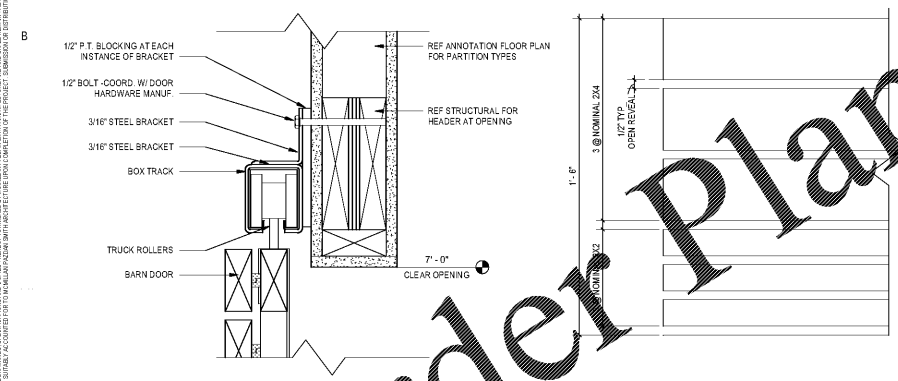
D4 TYPE D1 DOUBLE BACK  
A810 3/4" x 1'-0"



B1 SINGLE BARN DOOR PLAN  
A810 3/4" x 1'-0"



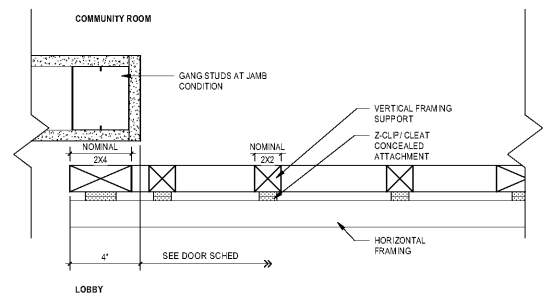
B2 DOUBLE BARN DOOR PLAN  
A810 3/4" x 1'-0"



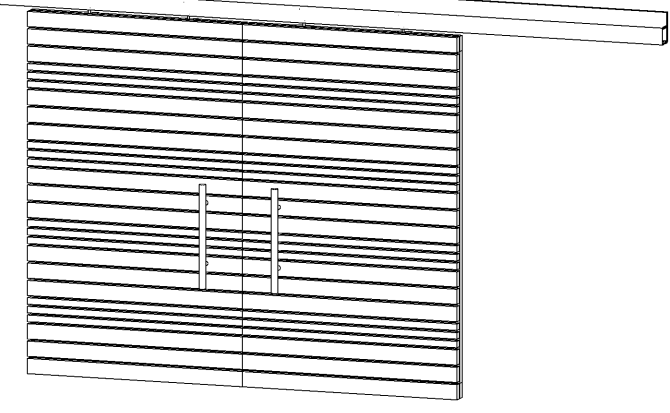
A1 BARN DOOR SECTION DETAIL  
A810 3" x 1'-0"

C1 BARN DOOR PATTERN  
A810 3" x 1'-0"

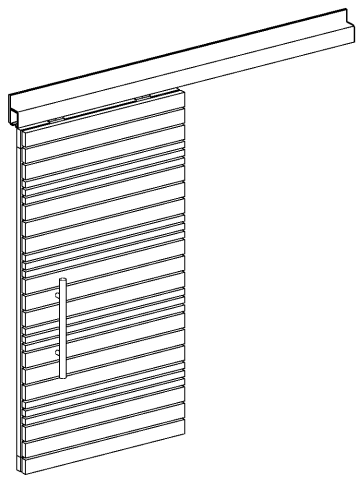
FINISH NOTE: BARN DOOR TO RECEIVE PNT 6; SEE FINISH SCHEDULE



C2 BARN DOOR PLAN DETAIL  
A810 3" x 1'-0"



3D PERSPECTIVE SHOWN FOR REFERENCE ONLY



3D PERSPECTIVE SHOWN FOR REFERENCE ONLY

Order Plans @ WWW.LDOnline.com