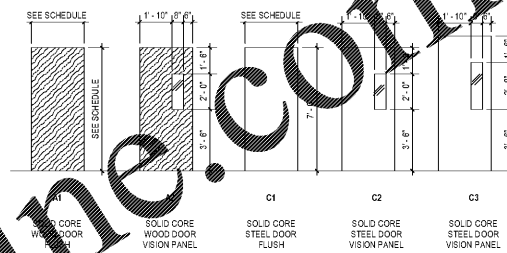


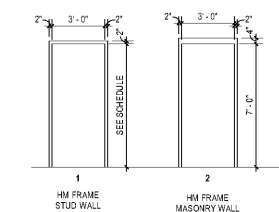
GENERAL DOOR AND FRAME NOTES

- SEE ANNOTATED FLOOR PLAN FOR PARTITION, EXTERIOR WALL AND WINDOW TYPES, INCLUDING STOREFRONT ENTRANCES.
- REFER TO SPECIFICATIONS FOR ADDITIONAL INFORMATION ON DOORS, FRAMES, AND HARDWARE.
- THRESHOLDS SHALL BE 1/2" MAX HEIGHT.
- ALL EXTERIOR METAL DOORS SHALL BE INSULATED AND WEATHER STRIPPED.
- FRAME MANUFACTURER SHALL BE RESPONSIBLE FOR ALL NECESSARY FRAME STRUCTURAL BRACING AND REINFORCING.
- INTERIOR HOLLOW METAL FRAMES SHALL BE 16 GA SHOP PRIMED STEEL.
- EXTERIOR HM FRAMES SHALL BE 14 GA GALVANIZED SHOP PRIMED STEEL.
- EXTERIOR HM FRAMES FULL PROFILE WELDED AND GROUND SMOOTH KNOCK-DOWN FRAMES OR FACE ONLY WELDED FRAMES ARE PROHIBITED.
- FLOOR ANCHORS ARE REQUIRED AT EACH HOLLOW METAL FRAME.
- HEAD ANCHORS: ONE ANCHOR PER HEAD FOR FRAME WIDTHS UP TO 42". TWO ANCHORS PER HEAD FOR FRAME WIDTHS GREATER THAN 42" WIDE.
- REFER TO WINDOW TYPES FOR GLAZING IN ALUMINUM STOREFRONT DOORS.
- REFER TO ELECTRICAL FOR REQUIREMENTS AT ALL DOORS NOTED AS "SECURE ACCESS".
- ALL DOORS UNDERCUT 5/8" UNLESS NOTED OTHERWISE IN DOOR SCHEDULE.

LEAF TYPE LEGEND



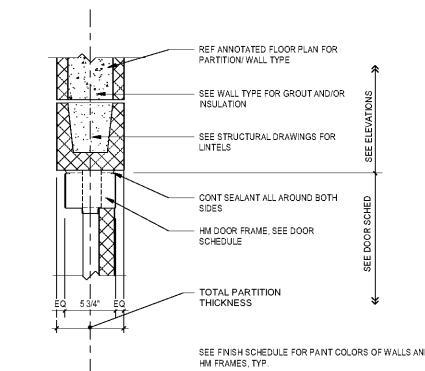
HOLLOW METAL FRAME TYPES



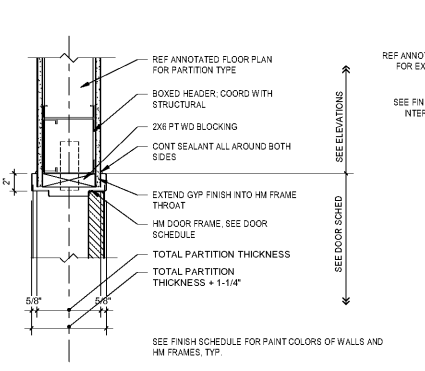
DOOR SCHEDULE

DOOR NO.	ROOM NAME	WIDTH	HEIGHT	LEAF TYPE	FRAME TYPE	HDW TYPE	RATING	DETAILS		REMARKS
								JAMB	SILL	
100A	PUBLIC LOBBY	6'-0"	7'-8"	ALUM SF	SEE ELEV	HW1	SEE ELEV	SEE ELEV	SEE ELEV	SECURE ACCESS. PROVIDE 3/4" UNDERCUT
100B	NON-PROFIT	3'-8"	6'-11 1/2"	SEE DETAILS SHEET	HW7		SEE DETAILS SHEET	SEE DETAILS SHEET	SEE DETAILS SHEET	SEE DETAIL SHEET FOR UNDERCUT
100C	CORR DOR	3'-0"	7'-0"	A2	1	HW1	H2	J2	S2	PROVIDE 3/4" UNDERCUT
100D	COMMUNITY ROOM	8'-0"	7'-0"	ALUM SF	SEE ELEV	HW1	SEE DETAILS SHEET	SEE DETAILS SHEET	SEE DETAILS SHEET	SEE DETAIL SHEET FOR UNDERCUT
101A	CORR DOR	3'-0"	7'-0"	A2	1	HW3	H2	J2	S2	SECURE ACCESS. PROVIDE 3/4" UNDERCUT
102A	NON-PROFIT	3'-0"	7'-8"	ALUM SF	SEE ELEV	HW1	SEE ELEV	SEE ELEV	SEE ELEV	PROVIDE 3/4" UNDERCUT
102B	NON-PROFIT	3'-0"	7'-0"	A1	1	HW5	H2	J2	S2	
104	TOILET	3'-0"	7'-0"	A1	1	HW2	H2	J2	S2	
105	CORR DOR	3'-0"	7'-0"	A1	1	HW2	H2	J2	S2	
106	STORAGE ROOM	3'-0"	7'-0"	C1	1	HW5	H2	J2	S2	
107	CORR DOR	3'-0"	7'-0"	A2	1	HW6	H2	J2	S2	
108	CORR DOR	3'-0"	7'-0"	C1	1	HW5	H2	J2	S2	
109	ADOPTION CAT ROOM	3'-0"	7'-0"	ALUM SF	SEE ELEV	HW4	SEE ELEV	SEE ELEV	SEE ELEV	PROVIDE EXTERIOR DOOR AND FRAME. REF SPECIFICATION
110	CORR DOR	3'-0"	7'-0"	ALUM SF	SEE ELEV	HW4	SEE ELEV	SEE ELEV	SEE ELEV	
111	CORR DOR	3'-0"	7'-0"	ALUM SF	SEE ELEV	HW4	SEE ELEV	SEE ELEV	SEE ELEV	
112	ADOPTION CAT ROOM	3'-0"	7'-0"	ALUM SF	SEE ELEV	HW4	SEE ELEV	SEE ELEV	SEE ELEV	PROVIDE EXTERIOR DOOR AND FRAME. REF SPECIFICATION
113	CORR DOR	3'-0"	7'-0"	C1	1	HW5	H2	J2	S2	PROVIDE 3/4" UNDERCUT
114	LAUNDRY	3'-0"	7'-0"	C2	1	HW4	45 MN	H2	J2	PROVIDE 1" UNDERCUT
115A	CORR DOR	3'-0"	7'-0"	C2	1	HW4	H2	J2	S2	PROVIDE 1" UNDERCUT
116	CORR DOR	3'-0"	7'-0"	A1	1	HW2	H2	J2	S2	PROVIDE 1" UNDERCUT
118	CORR DOR	3'-0"	7'-0"	C2	2	HW4	H4	J4	S1	PROVIDE 3/4" UNDERCUT. PROVIDE EXTERIOR DOOR AND FRAME. REF SPECIFICATION
118.1	VESTIBULE	3'-0"	7'-0"	C1	1	HW5	H2	J2	S2	PROVIDE 3/4" UNDERCUT. PROVIDE EXTERIOR DOOR AND FRAME. REF SPECIFICATION
119A	VESTIBULE	3'-0"	7'-0"	C2	2	HW4	H1	J1	S1	PROVIDE 3/4" UNDERCUT. PROVIDE EXTERIOR DOOR AND FRAME. REF SPECIFICATION
119B	ADOPTION DOG KENNELS	3'-0"	7'-0"	C2	2	HW4	H1	J1	S1	PROVIDE 3/4" UNDERCUT. PROVIDE EXTERIOR DOOR AND FRAME. REF SPECIFICATION
120A	VESTIBULE	3'-0"	7'-0"	C2	2	HW1	H1	J1	S1	SECURE ACCESS. PROVIDE 3/4" UNDERCUT
120B	VESTIBULE	3'-0"	7'-0"	C2	2	HW1	H1	J1	S1	SECURE ACCESS. PROVIDE 3/4" UNDERCUT
121A	VESTIBULE	3'-0"	7'-0"	C2	2	HW4	H1	J1	S1	PROVIDE 3/4" UNDERCUT. PROVIDE EXTERIOR DOOR AND FRAME. REF SPECIFICATION
121B	ADOPTION DOG KENNELS	3'-0"	7'-0"	C2	2	HW4	H1	J1	S1	PROVIDE 3/4" UNDERCUT. PROVIDE EXTERIOR DOOR AND FRAME. REF SPECIFICATION
122A	VESTIBULE	3'-0"	7'-0"	C2	2	HW1	H1	J1	S1	SECURE ACCESS. PROVIDE 3/4" UNDERCUT
122B	VESTIBULE	3'-0"	7'-0"	C2	2	HW1	H1	J1	S1	SECURE ACCESS. PROVIDE 3/4" UNDERCUT
123A	VESTIBULE	3'-0"	7'-0"	C2	2	HW4	H1	J1	S1	PROVIDE 3/4" UNDERCUT. PROVIDE EXTERIOR DOOR AND FRAME. REF SPECIFICATION
123B	ADOPTION DOG KENNELS	3'-0"	7'-0"	C2	2	HW1	H1	J1	S1	SECURE ACCESS. PROVIDE 3/4" UNDERCUT
124A	SHORT TERM INTAKE HOLDING	3'-0"	7'-0"	C2	1	HW3	H2	J2	S2	SECURE ACCESS. PROVIDE EXTERIOR DOOR AND FRAME. REF SPECIFICATION
124B	SHORT TERM INTAKE HOLDING	3'-0"	7'-8"	C3	1	HW1	H3	J3	S3	SECURE ACCESS. PROVIDE 3/4" UNDERCUT
125	SHORT TERM INTAKE HOLDING	3'-0"	7'-0"	C2	1	HW3	H2	J2	S2	
126	SHORT TERM INTAKE HOLDING	3'-0"	7'-0"	C2	1	HW3	H2	J2	S2	
127	SHORT TERM INTAKE HOLDING	3'-0"	7'-0"	C2	1	HW4	H2	J2	S2	PROVIDE 1" UNDERCUT
128	SHORT TERM INTAKE HOLDING	3'-0"	7'-0"	C2	1	HW4	H2	J2	S2	PROVIDE 1" UNDERCUT. PROVIDE EXTERIOR DOOR AND FRAME. REF SPECIFICATION
129	CORR DOR	3'-0"	7'-0"	C1	1	HW5	H2	J2	S2	PROVIDE EXTERIOR DOOR AND FRAME. REF SPECIFICATION
130A	CORR DOR	3'-0"	7'-0"	C2	1	HW3	H2	J2	S2	SECURE ACCESS
130B	CORR DOR	3'-0"	7'-0"	C2	1	HW3	H2	J2	S2	SECURE ACCESS
130C	CORR DOR	3'-0"	7'-8"	C3	1	HW1	H3	J3	S3	SECURE ACCESS. PROVIDE 3/4" UNDERCUT
131A	CORR DOR	3'-0"	7'-8"	C3	1	HW1	H3	J3	S3	SECURE ACCESS. PROVIDE 3/4" UNDERCUT
131B	CORR DOR	3'-0"	7'-8"	C3	1	HW1	H3	J3	S3	SECURE ACCESS. PROVIDE 3/4" UNDERCUT
131C	CORR DOR	3'-0"	7'-8"	C3	1	HW1	H3	J3	S3	SECURE ACCESS. PROVIDE 3/4" UNDERCUT
131D	CORR DOR	3'-0"	7'-0"	C2	2	HW1	H4	J4	S1	SECURE ACCESS. PROVIDE 3/4" UNDERCUT
131E	CORR DOR	3'-0"	7'-0"	C2	1	HW1	H2	J2	S2	SECURE ACCESS
132	CORR DOR	3'-0"	7'-0"	C1	1	HW5	H2	J2	S2	SECURE ACCESS. PROVIDE 3/4" UNDERCUT

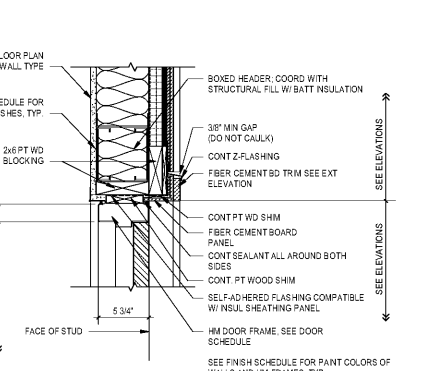
H1 HM DOOR HEAD AT MASONRY WALL



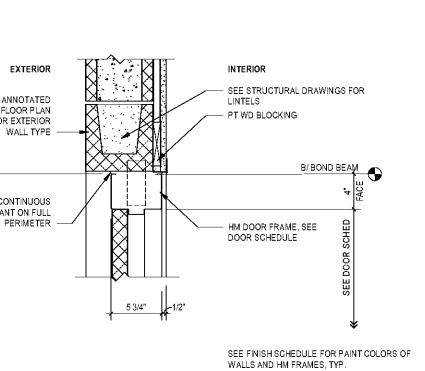
H2 HM DOOR HEAD AT INTERIOR STUD WALL



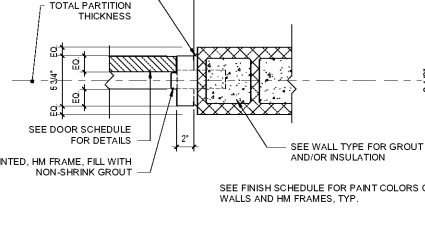
H3 HM DOOR HEAD AT EXTERIOR STUD WALL



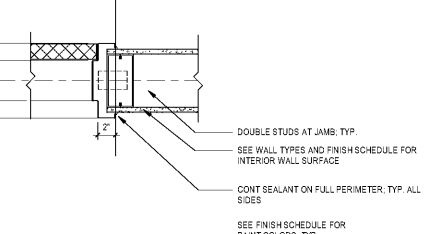
H4 HM DOOR HEAD AT EXTERIOR MASONRY WALL WITH FURRING



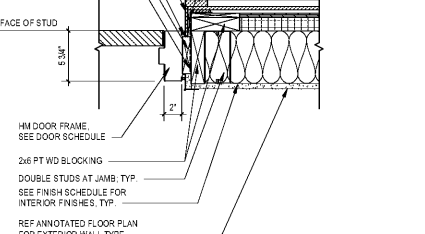
J1 HM DOOR JAMB AT MASONRY WALL



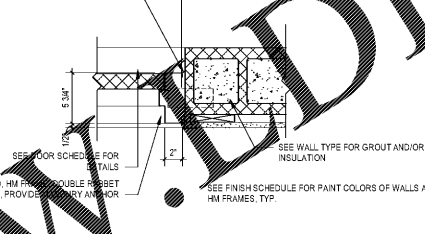
J2 HM DOOR JAMB AT INTERIOR STUD WALL



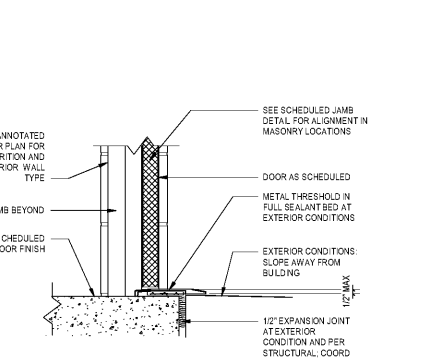
J3 HM DOOR JAMB AT EXTERIOR STUD WALL



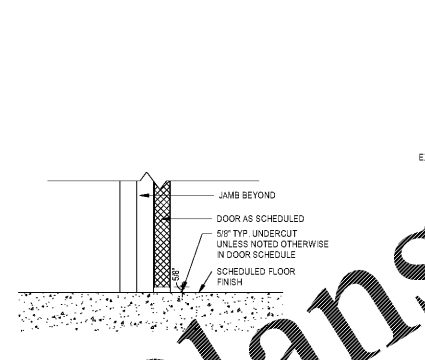
J4 HM DOOR JAMB AT EXTERIOR MASONRY WALL WITH FURRING



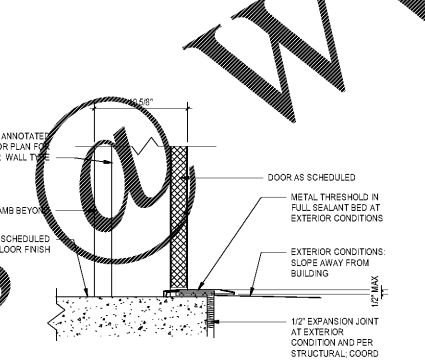
S1 TYPICAL INT/EXTERIOR HM FRAME IN MASONRY WALLS



S2 TYPICAL INTERIOR HM FRAME IN STUD WALLS

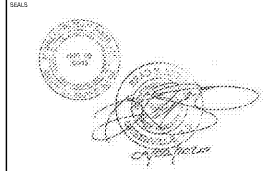


S3 TYPICAL HM FRAME IN EXTERIOR STUD WALL



HARDWARE SETS

- HW1: ENTRY FUNCTION PASSAGE DEVICE. SEE SCHEDULE COMMENTS FOR INSTANCES OF ACCESS CONTROL.
- HW2: PRIVACY FUNCTION.
- HW3: CLASSROOM FUNCTION. SEE SCHEDULE COMMENTS FOR INSTANCES OF ACCESS CONTROL.
- HW4: PASSAGE FUNCTION.
- HW5: STOREROOM FUNCTION.
- HW6: OFFICE FUNCTION.
- HW7: LOCKABLE BARN DOOR HARDWARE - LOCATE LOCKS ON LOBBY SIDE. SEE DETAILS SHEET FOR MORE INFO.



JACKSON COUNTY
 ANIMAL RESCUE CENTER AND GREEN ENERGY PARK
 DILLSBORO, NORTH CAROLINA

NO.	DATE	DESCRIPTION	BY
1	9/22/2020	ISSUE FOR BID + PERMIT	

PRINCIPAL IN CHARGE: CP
 PROJECT ARCHITECT: CP
 DRAWN BY: KM

SHEET TITLE:
 DOOR SCHEDULE, ELEVATIONS, AND DETAILS

SHEET NO: A800
 PROJ. NO: 012618.00