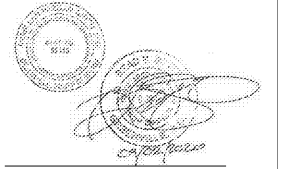


CONSULTANT LOG

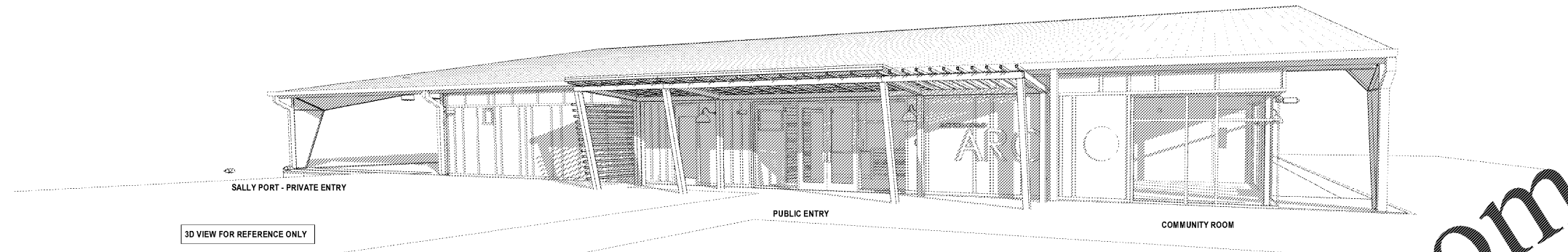


JACKSON COUNTY
ANIMAL RESCUE CENTER AND GREEN ENERGY
PARK
DILLSBORO, NORTH CAROLINA

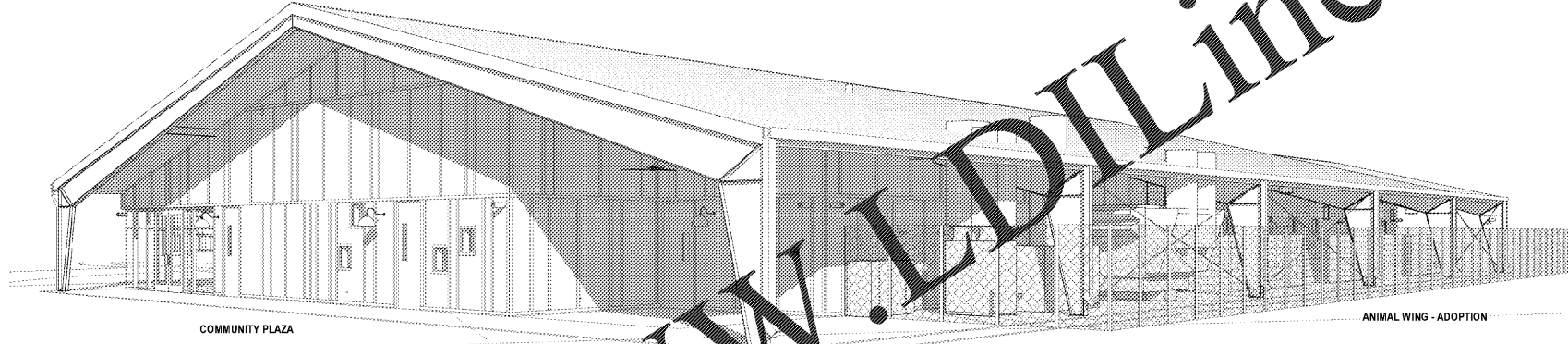
SHEET ISSUE			
NO.	DATE	DESCRIPTION	BY
1	9/22/2020	ISSUE FOR BID + PERMIT	

PRINCIPAL IN CHARGE
PROJECT ARCHITECT
DRAWN BY:
SHEET TITLE:
EXTERIOR
PERSPECTIVE
VIEWS
SHEET NO.
PROJ. NO.
019216.00

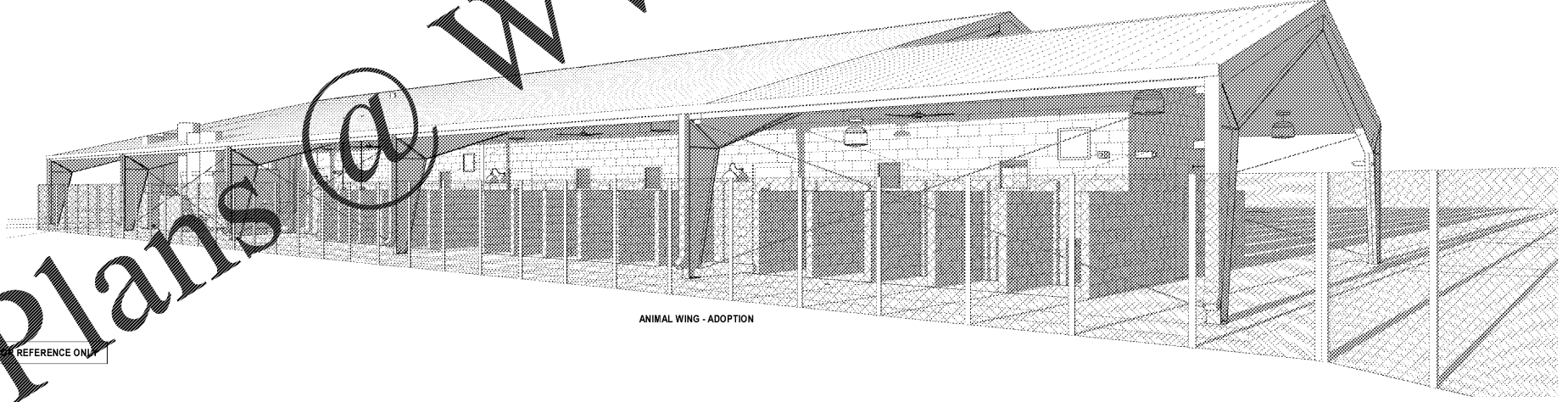
A302



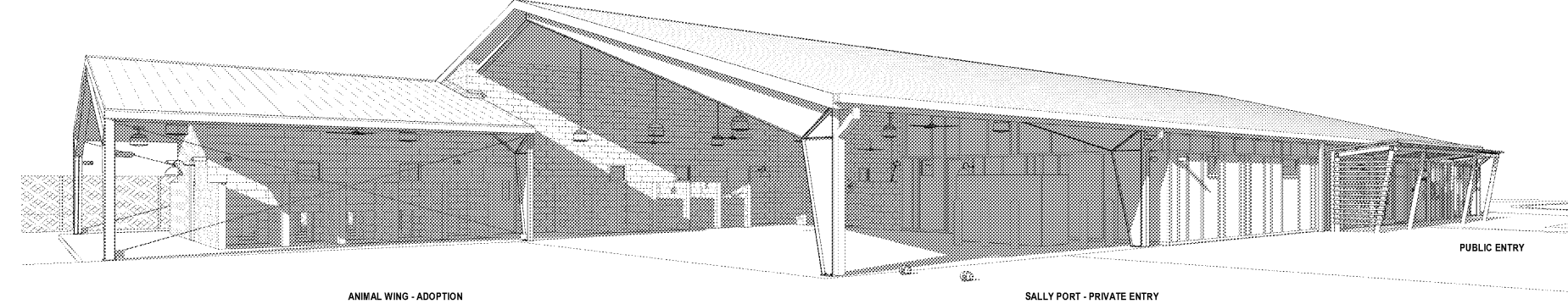
3D VIEW FOR REFERENCE ONLY



3D VIEW FOR REFERENCE ONLY



3D VIEW FOR REFERENCE ONLY



3D VIEW FOR REFERENCE ONLY

Order Plans @ www.LDILine.com

ALL RIGHTS RESERVED. NO PART OF THIS DOCUMENT MAY BE REPRODUCED OR TRANSMITTED IN ANY FORM OR BY ANY MEANS, ELECTRONIC OR MECHANICAL, INCLUDING PHOTOCOPYING, RECORDING, OR BY ANY INFORMATION STORAGE AND RETRIEVAL SYSTEM, WITHOUT THE WRITTEN PERMISSION OF THE ARCHITECT. THE ARCHITECT'S LIABILITY IS LIMITED TO THE PROFESSIONAL SERVICES PROVIDED BY THE ARCHITECT. THE ARCHITECT DOES NOT WARRANT THE ACCURACY OF ANY INFORMATION PROVIDED BY OTHERS. THE ARCHITECT'S LIABILITY IS LIMITED TO THE PROFESSIONAL SERVICES PROVIDED BY THE ARCHITECT. THE ARCHITECT DOES NOT WARRANT THE ACCURACY OF ANY INFORMATION PROVIDED BY OTHERS.