

STUD SIZE	3 5/8"
ACTUAL DIMENSION 'X'	4 7/8"
FIRE RESISTANCE AND DESIGN NUMBER	1-HR (UL R4419)
ACOUSTICAL RATING	49 STC (SA-87D17)

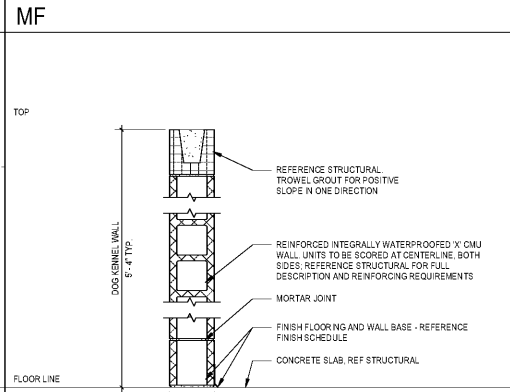
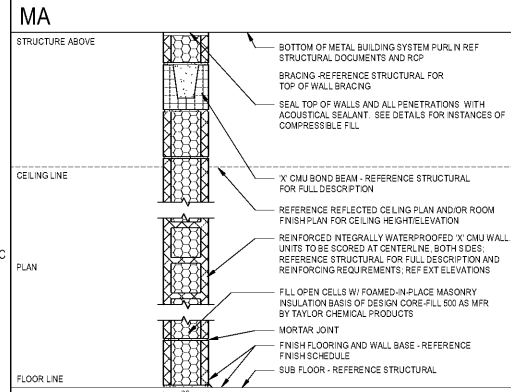
STUD SIZE	3 5/8"
ACTUAL DIMENSION 'X'	4 7/8"
FIRE RESISTANCE AND DESIGN NUMBER	-
ACOUSTICAL RATING	-

STUD SIZE	3 5/8"
ACTUAL DIMENSION 'X'	4 1/4"
FIRE RESISTANCE AND DESIGN NUMBER	-
ACOUSTICAL RATING	-

7/8" VERTICAL HAT-SHAPED RIGID FURRING STRIPS	7/8"
ACTUAL DIMENSION 'X'	1 1/2"
FIRE RESISTANCE AND DESIGN NUMBER	-
ACOUSTICAL RATING	-

GENERAL PARTITION NOTES

- A. PLAN DIMENSIONS ARE FACE OF STUD OR CMU UNLESS SPECIFICALLY NOTED OTHERWISE.
- B. GYPSUM WALL BOARD LAYERS ON RATED WALLS SHALL BE CONTINUOUS THROUGH ALL INTERSECTIONS WITH NON-RATED WALLS.
- C. REFERENCE ALL FLOOR PLANS AND LIFE SAFETY PLANS FOR RATED WALL LOCATIONS AND RATINGS.
- D. PROVIDE TYPE SCX MOLD AND MOISTURE RESISTANT GYPSUM WALL BOARD IN ALL TOILET AND JANITOR ROOMS.
- E. PROVIDE CEMENT BOARD IN ALL WET SHOWER AREA WALLS WITH TILE FINISH.
- F. PROVIDE IMPACT RESISTANT GYPSUM WALL BOARD UP TO 4'-0" IN ALL LOBBIES, CORRIDORS, AND STAIRWELLS.
- G. AT ALL JOINTS AT TOP OF ALL FIRE RATED PARTITIONS PROVIDE COMPLETE UL LISTED FIRE RESISTIVE JOINT SYSTEM TO MATCH FIRE RESISTANCE OF WALL ASSEMBLY AND THAT IS ALSO COMPATIBLE WITH JOINT SUBSTRATES.
- H. ANY PORTION OF GYPSUM WALL BOARD THAT BECOMES WET OR SHOWS SIGNS OF MOISTURE DAMAGE, EITHER BEFORE OR AFTER INSTALLATION, IS TO BE REMOVED IMMEDIATELY AND REPLACED WITH NEW DRY GYPSUM WALL BOARD.
- I. INTERIOR PARTITIONS MAY HAVE ADDITIONAL FINISHES. REFERENCE FINISH SCHEDULE AND DETAIL SHEETS FOR ADDITIONAL INFORMATION.
- J. PROVIDE PROJECT SPECIFIC DELEGATED DESIGN DATA INCLUDING STUD SPACING, STUD GAUGE BRACING AND DEFLECTION.
- K. SOUND ATTENUATION BLANKET IS REQUIRED AT ALL INTERIOR PARTITIONS AND SHALL RUN FULL HEIGHT OF PARTITION UNLESS NOTED OTHERWISE. SOUND ATTENUATION BATT SHALL BE AS FOLLOWS:
 - a. FIRE RESISTANT PARTITIONS: MINERAL WOOL SOUND ATTENUATION FIRE BLANKET (BAFB) - FULL STUD DEPTH.
 - b. NON-RATED PARTITIONS: UNFACED FIBERGLASS SOUND ATTENUATION BATT (SAB) - FULL STUD DEPTH.
- L. MINOR WALLS ON OTHER WALLS NOT TAGGED WILL HAVE SAME WALL TYPE AS ADJACENT WALLS (UNLESS OTHERWISE NOTED).
- M. COORDINATE AND PROVIDE ALL REQUIRED BRACING WITHIN WALLS. THIS INCLUDES BUT IS NOT LIMITED TO ALL MILLION POUND WORK, BAR/JACK MONITORS, AND TOILET PARTITIONS.
- N. INSTALL GYPSUM WALL BOARD ON INTERIOR PARTITIONS WITH A MINIMUM 1/4" GAP BETWEEN THE GYPSUM WALL BOARD AND THE STUDS OR CMU'S.
- O. SEE ROOM FINISH SCHEDULE FOR LOCATION OF TILE OVER BOARD.



WALL TAG LEGEND

WALL TYPE	STEEL STUD	MASONRY
L - LAMINATED	1-1/8" STUD	4'-0" CMU
O - 7/8" HAT	2-1/2" STUD	6'-0" CMU
1 - 1 1/2" HAT	3-1/8" STUD	8'-0" CMU
	4'-0" STUD	6'-0" STUD
	6'-0" STUD	8'-0" STUD

WALL FRAMING PRIORITY

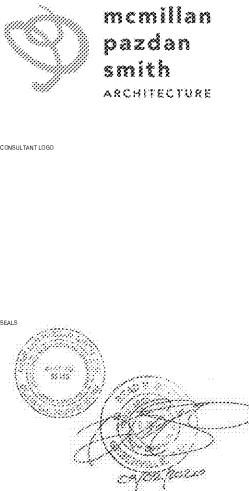
- A. PARTITIONS SHALL BE CONSTRUCTED SUCH THAT RATED PARTITIONS ARE FRAMED BEFORE UNRATED PARTITIONS.
- B. UNRATED PARTITIONS SHALL BE FRAMED TIGHT TO, BUT NOT INTERRUPT RATED PARTITION CONSTRUCTION.

NOMINAL CMU SIZE	8"
ACTUAL DIMENSION 'X'	7 5/8"
FIRE RESISTANCE AND DESIGN NUMBER	1-HR & 2-HR (UL R4005)
ACOUSTICAL RATING	49 STC - 1-HR 55 STC - SOLID

NOMINAL CMU SIZE	8"	8"
ACTUAL DIMENSION 'X'	5 5/8"	7 5/8"
FIRE RESISTANCE AND DESIGN NUMBER	-	-
ACOUSTICAL RATING	-	-

CONTROL JOINT NOTES

- GYPSUM WALL BOARD CONTROL JOISTS AS FOLLOWS:
- A. PROVIDE CONTROL JOISTS IN WIDTHS NO GREATER THAN 30'-0" OC, BUT NO LESS THAN 16'-0".
 - B. INSTALL CONTROL JOISTS ACCORDING TO ASTM C 940 AND IN SPECIFIC LOCATIONS APPROVED BY ARCHITECT FOR VISUAL EFFECT.
 - C. SUBMIT CONTROL JOINT LOCATION PLAN TO ARCHITECT FOR REVIEW PRIOR TO INSTALLATION.
 - D. PROVIDE CONTROL JOISTS ABOVE DOOR JAMBS WHENEVER POSSIBLE. ALIGN CONTROL JOINT WITH DOOR FRAME RETURN OR CENTERLINE OF SEALANT JOINT.



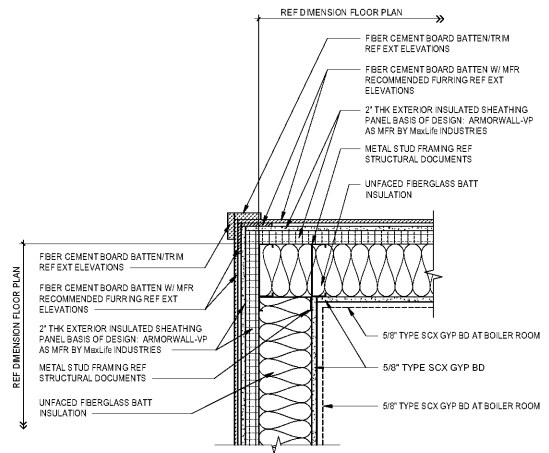
JACKSON COUNTY
ANIMAL RESCUE CENTER AND GREEN ENERGY PARK
DILLSBORO, NORTH CAROLINA

SHEET ISSUE	NO.	DATE	DESCRIPTION	BY
	1	9/22/2020	ISSUE FOR BID PERMIT	

PRINCIPAL IN CHARGE: CP
PROJECT ARCHITECT: CP
DRAWN BY: ADD

SHEET TITLE: WALL TYPES

SHEET NO. A003 PROJECT NO. 015216.00



TYPE EX-1
FBER CEMENT BOARD ON METAL STUD FRAMING - AT BOLER ROOM PROVIDE TWO LAYERS 5/8" TYPE SCX GYP BD ON INTERIOR SIDE FOR 1-HR FIRE RATING PER UL W469

TYPICAL EXTERIOR ENVELOPE DETAIL
1 1/2" = 1'-0"

Order Plans @ www.LDILine.com