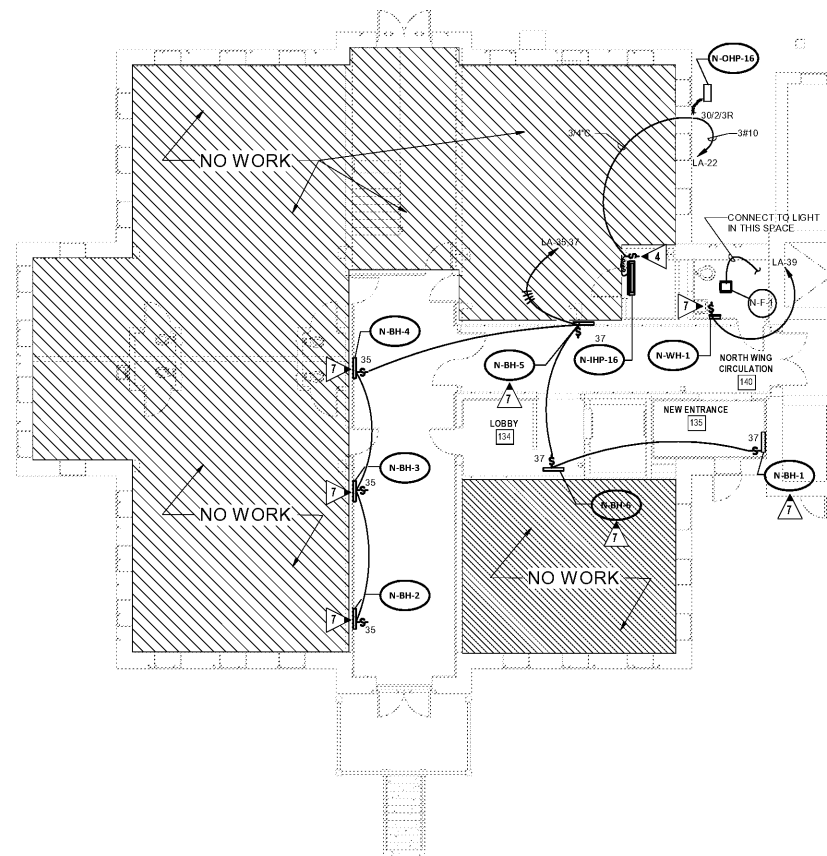


KEYED NOTES:

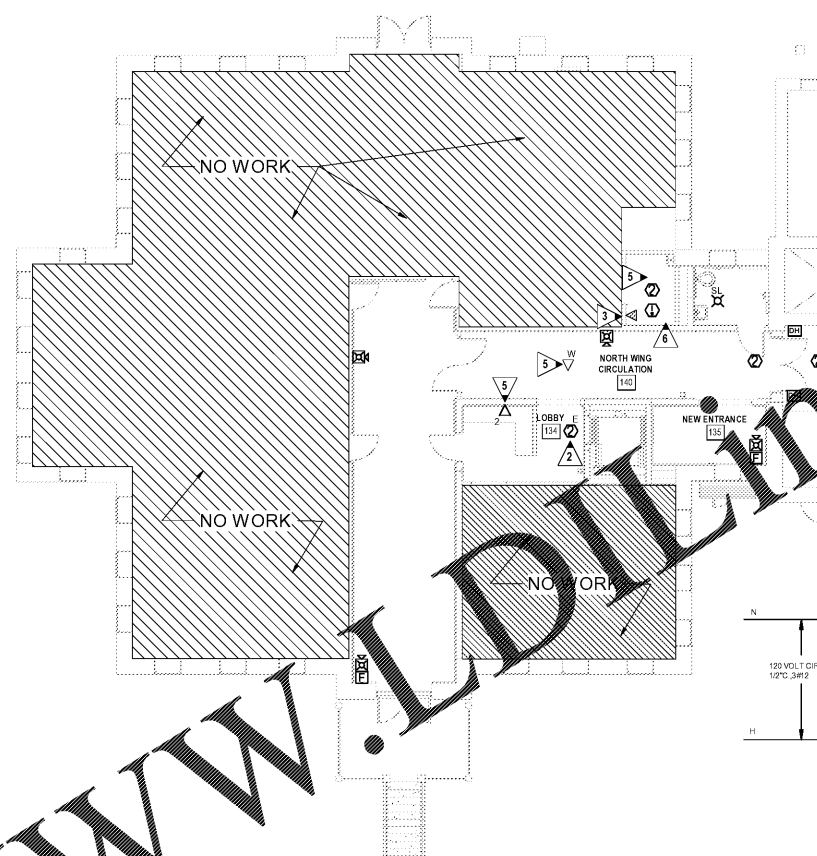
- 1 LOCATE SMOKE AND HEAT DETECTOR AT TOP OF SHAFT
- 2 INTERLOCK SMOKE DETECTOR TO ELEVATOR RECALL
- 3 TELCO DROP TO SERVE ELEVATOR PHONE. ROUTE TO EXISTING TELCO DEMARC IN BASEMENT OF LIBRARY
- 4 PROVIDE 208 VOLT, 2 POLE, 20 AMP TOGGLE SWITCH AS DISCONNECT MEANS AT TRIP UNIT
- 5 ROUTE NEW DATA DROPS TO EXISTING IDF RACK IN LIBRARY
- 6 INTERLOCK HEAT DETECTOR TO SHUNT TRIP BREAKER SERVING ELEVATOR. SEE DETAIL S/E603
- 7 LOCATE TOGGLE SWITCH AT CEILING LEVEL. ROUTE CONDUIT CONCEALED IN WALL DOWN TO NEW ELECTRICAL HEATER

LOW VOLTAGE SYSTEMS NOTES:

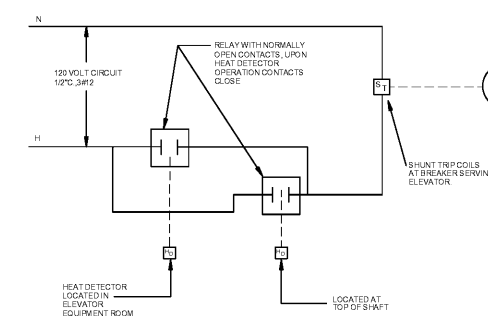
- 1 ALL NEW FIRE ALARM SIGNALS AT NORTH WING SHALL CONNECT TO ALARM PANEL SHOWN ON SHEET E603
- 2 SEE DETAIL S/E603 FOR DATA CAGING NOTES



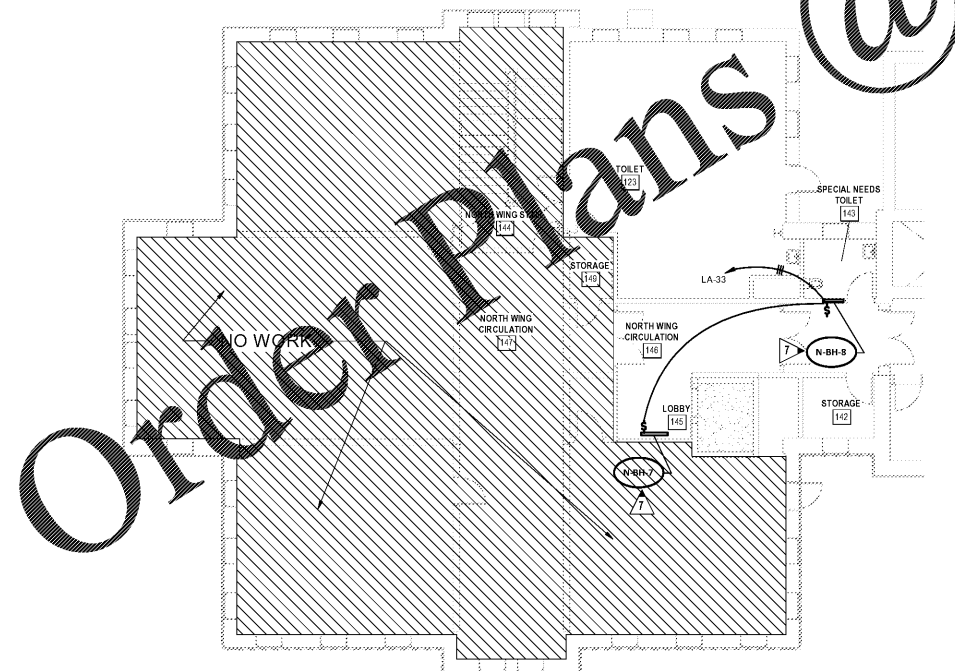
1 MECHANICAL POWER PLAN - FIRST LEVEL NW
E603 SCALE: 1/8" = 1'-0"



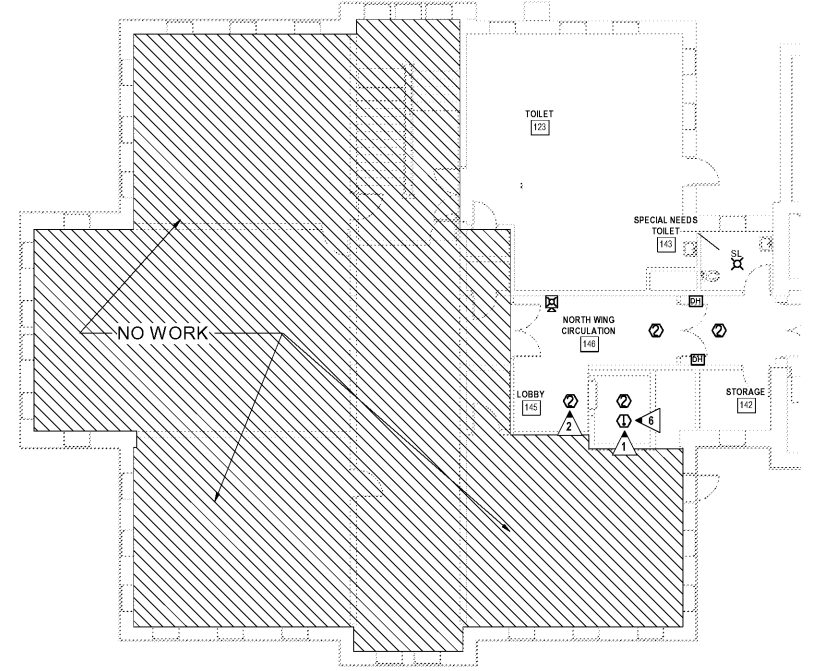
2 SYSTEMS PLAN - FIRST LEVEL NW
E603 SCALE: 1/8" = 1'-0"



5 ELEVATOR DISCONNECT DIAGRAM
E603 SCALE: NONE



3 MECHANICAL POWER PLAN - SECOND LEVEL NW
E603 SCALE: 1/8" = 1'-0"



4 SYSTEMS PLAN - SECOND LEVEL NW
E603 SCALE: 1/8" = 1'-0"

AIKEN COUNTY
AIKEN PUBLIC LIBRARY & NORTH WING
RENOVATION
314 CHESTERFIELD ST. S. AIKEN, SC

SHEET ISSUE:

NO.	DATE	DESCRIPTION	BY
A	01/27/2020	SD PRICING SET	
B	03/09/2020	DD SET	
D	04/12/2020	PERMIT SET	
E	07/02/2020	ISSUED FOR BIDS	

ISSUED FOR BIDS 07/02/2020
PRINCIPAL IN CHARGE: MAP
PROJECT ENGINEER: ALG
DRAWN BY: ALG

SHEET TITLE:
MECHANICAL
POWER AND
SYSTEMS PLANS -
NORTH WING

E603

PROJ. NO.
019477.01

WWW.LDLINE.COM

Order Plans @

ALL RIGHTS RESERVED. NO PART OF THIS DOCUMENT SHALL BE REPRODUCED OR TRANSMITTED IN ANY FORM OR BY ANY MEANS, ELECTRONIC OR MECHANICAL, INCLUDING PHOTOCOPYING, RECORDING, OR BY ANY INFORMATION STORAGE AND RETRIEVAL SYSTEM, WITHOUT THE WRITTEN PERMISSION OF THE CONSULTANT. THE CONSULTANT'S LIABILITY IS LIMITED TO THE PROFESSIONAL SERVICES PROVIDED HEREIN. THE CONSULTANT SHALL NOT BE RESPONSIBLE FOR ANY DAMAGE TO PERSONS OR PROPERTY, INCLUDING CONSEQUENTIAL DAMAGES, ARISING FROM THE USE OF THIS DOCUMENT. THE CONSULTANT'S LIABILITY IS LIMITED TO THE PROFESSIONAL SERVICES PROVIDED HEREIN. THE CONSULTANT SHALL NOT BE RESPONSIBLE FOR ANY DAMAGE TO PERSONS OR PROPERTY, INCLUDING CONSEQUENTIAL DAMAGES, ARISING FROM THE USE OF THIS DOCUMENT.