

NO.	DATE	DESCRIPTION	BY
A	01/27/2020	SD PRICING SET	
B	03/09/2020	DD SET	
D	04/13/2020	PERMIT SET	
E	07/02/2020	ISSUED FOR BIDS	

ISSUED FOR BIDS 07/02/2020

PRINCIPAL IN CHARGE: MAP
PROJECT ENGINEER: ALG
DRAWN BY: ALG

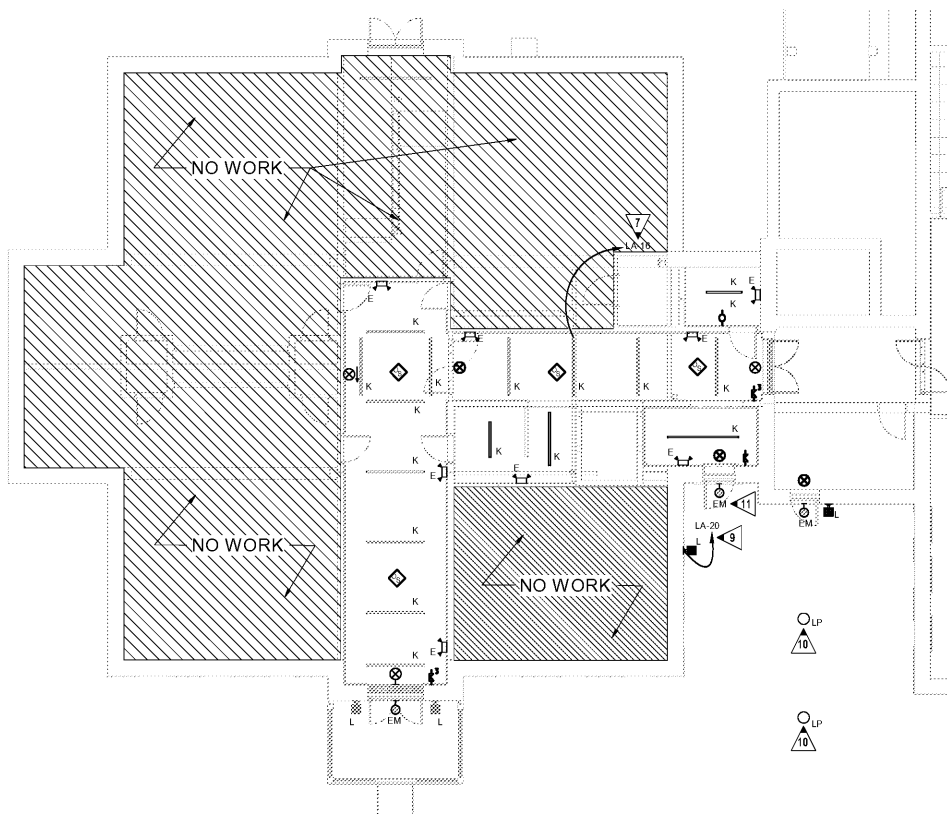
SHEET TITLE:
LIGHTING AND
POWER PLANS -
NORTH WING

SHEET NO. PROJ. NO.
E602 01947731

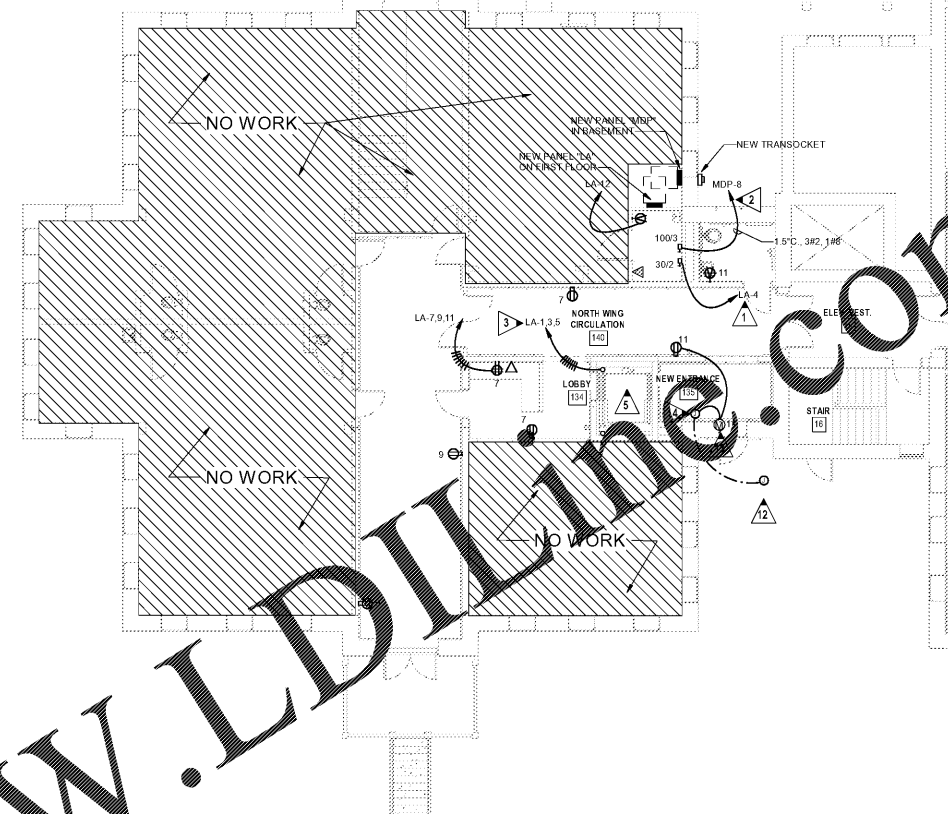
E602

- GENERAL NOTES:**
- ALL LIGHTING FIXTURES ARE TYPE "K" UNLESS NOTED OTHERWISE
 - PULL UNSWITCHED "HOT" TO FEED ALL EXIT AND EMERGENCY LIGHTING FIXTURES
 - PROVIDE ALL BRANCH CIRCUIT CONDUITS AND CONDUCTORS, ASSOCIATED FITTINGS AND CONNECTORS AS REQUIRED FOR A COMPLETE RACEWAY SYSTEM FROM PANELBOARDS TO LIGHT FIXTURES
 - PROVIDE DEDICATED NEUTRALS FOR ALL BRANCH CIRCUITS AND GREEN GROUNDING CONDUCTOR SIZED IN ACCORDANCE TO NFPA 70
 - REFER TO SPECIFICATIONS FOR CONDUIT AND CONDUCTOR TYPES APPROVED FOR USE IN THIS FACILITY
 - WHERE HOMERUNS EXCEED 100FT IN LENGTH, #10 CONDUCTORS SHALL BE INSTALLED. VERIFY DISTANCES PRIOR TO PULLING WIRE
 - CONTRACTOR SHALL PROVIDE CLASS 2, 600 VOLT RATED, 5-10 VOLT CONTROL WIRING FOR ALL LED FIXTURES WHERE CONTROLLED BY LOW-VOLTAGE CONTROLLERS OR WALL BOX DIMMERS
 - FOR ALL CONDUIT INSTALLATIONS, CONTRACTOR SHALL PULL #18 AWG TEN SOLID COPPER CONTROL WIRING IN SAME CONDUIT AS LINE-VOLTAGE CONDUCTORS. CONDUCTORS SHALL BE PURPLE & GRAY. FIXTURE WHIPS SHALL BE PROVIDED WITH CONTROL WIRING INSTALLED IN WHIPS TO MATCH INSTALLATION. FIXTURE WHIPS SHALL NOT EXCEED 6" IN LENGTH. NO EXCEPTIONS
 - SEE SHEET E100 FOR OCCUPANCY SENSOR WIRING DIAGRAMS

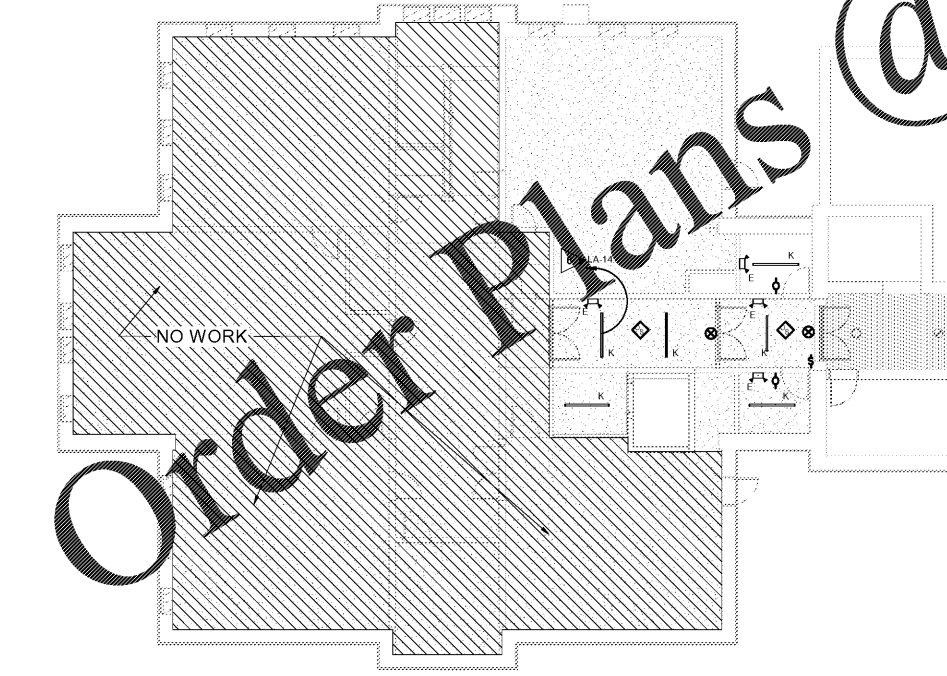
- KEYED NOTES:**
- 1-20'1" CIRCUIT FOR ELEVATOR LIGHTS
 - 1-1000' CIRCUIT FOR ELEVATOR LIGHTS. SEE ELEVATOR SCHEDULE
 - THREE(3) - 20A/1P CIRCUITS FOR ELEVATOR LIGHTS. PROVIDE 1/2" WIP COVER FOR EACH CIRCUIT. PROVIDE 1/2" WIP COVER FOR PIT LIGHT. PROVIDE TYPE "K" FIXTURES AND SWITCH
 - 3-20A/1P CIRCUITS TO ALL SIMPLEX RECEPTACLE FOR SUMP PUMP
 - IN NEW ELEVATOR PIT PROVIDE WALL SWITCH IN PIT, TWO(2) TYPE "K" FIXTURES WALL MOUNTED, ONE GFCI RECEPTACLE AND ONE SIMPLEX RECEPTACLE FOR SUMP PUMP
 - CIRCUIT LA-14 TO SERVE ALL LIGHTS ON SECOND FLOOR
 - CIRCUIT 16 TO SERVE ALL LIGHTS ON THIS SIDE OF NORTH WING
 - NOT USED
 - ROUTE CIRCUIT LA-20 THROUGH PHOTOCELL. CIRCUIT SERVES ALL TYPE "L" AND "LP" FIXTURES
 - TYPE "LP" FIXTURE AND POLE. SEE ARCHITECTURAL AND CIVIL PLAN FOR EXACT LOCATION. PROVIDE CONCRETE BASE (24" DIA. BY 48" DEPTH) AS PER MANUFACTURER'S POLAR BASE DIMENSIONS
 - COORDINATE EXACT ROUGH-IN FOR FIXTURE WITH ARCHITECTURAL CANOPY DETAIL
 - STUB UP IN GALVANIZED RIGID STEEL AT PEDESTAL MOUNTED ADA DOOR OPENER PUSH PLATE. PROVIDE ALL WIRING AS NECESSARY FROM PUSH PLATE TO DOOR OPENER. COORDINATE WITH SYSTEM INSTALLER AND DOOR HARDWARE DRAWINGS. PROVIDE 4" GALVANIZED CHANNEL IRON SET IN CONCRETE BASE. PROVIDE DIE CAST, DOUBLE GANG BOX FOR PUSH PLATE MOUNT AT +48" ABOVE GRADE. PAINT BACKBOX CHANNEL IRON AND CONDUIT AS DIRECTED BY ARCHITECT
 - PROVIDE 120 VOLT POWER TO DOOR OPENER. ROUTE CONDUIT CONCEALED PER DETAIL ON ARCHITECTURAL DRAWINGS. ROUTE A 1/2" CONDUIT TO EXTERIOR PEDESTAL MOUNTED PUSH PLATE OPENER. PROVIDE CONDUITS AS REQUIRED
 - PROVIDE FLUSH RECESSED TWO(2) GANG BACKBOX FOR INTERIOR PUSH PLATE OPENER. LOCATE AT +48" A.F.F.



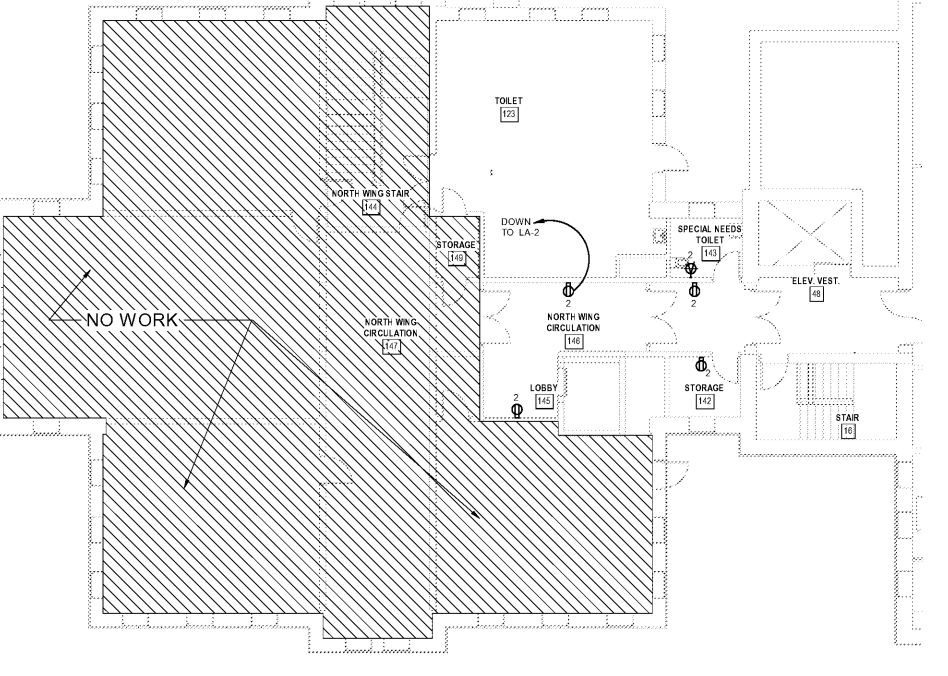
1 LIGHTING PLAN - FIRST LEVEL NW
E602 SCALE: 1/8" = 1'-0"



2 POWER PLAN - FIRST LEVEL NW
E602 SCALE: 1/8" = 1'-0"



3 LIGHTING PLAN - SECOND LEVEL NW
E602 SCALE: 1/8" = 1'-0"



4 POWER PLAN - SECOND LEVEL NW
E602 SCALE: 1/8" = 1'-0"

ALL RIGHTS RESERVED. NO PART OF THIS DOCUMENT IS TO BE REPRODUCED OR TRANSMITTED IN ANY FORM OR BY ANY MEANS, ELECTRONIC OR MECHANICAL, INCLUDING PHOTOCOPYING, RECORDING, OR BY ANY INFORMATION STORAGE AND RETRIEVAL SYSTEM, WITHOUT THE WRITTEN PERMISSION OF THE CONSULTANT. THE CONSULTANT'S LIABILITY IS LIMITED TO THE PROFESSIONAL SERVICES PROVIDED HEREIN. THE CONSULTANT SHALL NOT BE RESPONSIBLE FOR ANY DAMAGE TO PERSONS OR PROPERTY, INCLUDING CONSEQUENTIAL DAMAGES, ARISING FROM THE USE OF THIS DOCUMENT. THE CONSULTANT'S LIABILITY IS LIMITED TO THE PROFESSIONAL SERVICES PROVIDED HEREIN. THE CONSULTANT SHALL NOT BE RESPONSIBLE FOR ANY DAMAGE TO PERSONS OR PROPERTY, INCLUDING CONSEQUENTIAL DAMAGES, ARISING FROM THE USE OF THIS DOCUMENT.