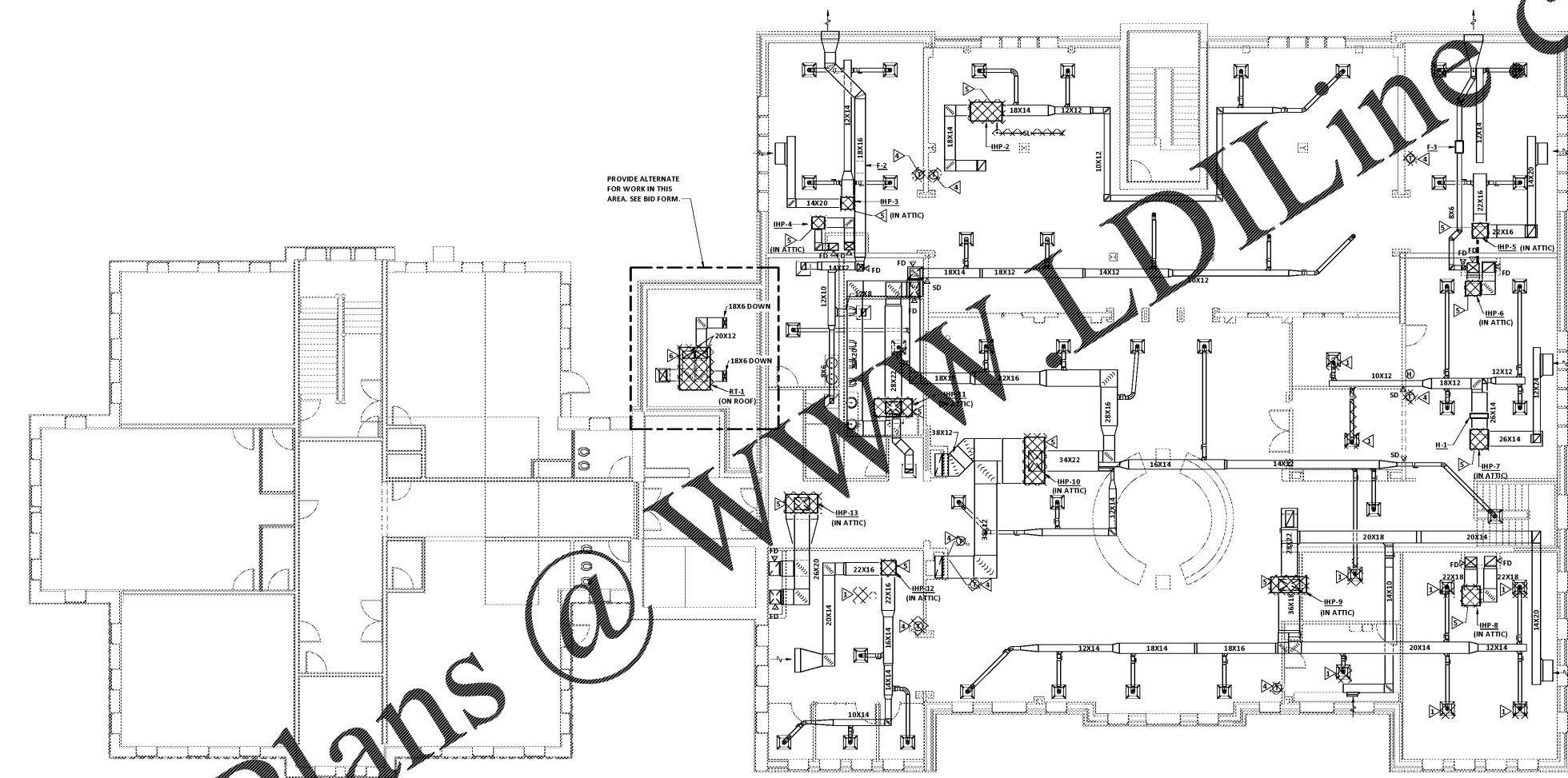




Order Plans @ WWW.DIline.com



HVAC DEMOLITION PLAN - SECOND FLOOR
SCALE: 1/8" = 1'-0"

- DEMOLITION**
- ▷ DEMOLISH EXISTING CEILING SUPPLY DIFFUSER AND ASSOCIATED INSULATION, ACCESSORIES, AND DUCTWORK WHERE SHOWN CROSS-HATCHED.
 - ▷ DEMOLISH EXISTING CEILING RETURN GRILLE AND ASSOCIATED INSULATION, ACCESSORIES, AND DUCTWORK WHERE SHOWN CROSS-HATCHED.
 - ▷ DEMOLISH EXISTING SIDEWALL SUPPLY DIFFUSER AND ASSOCIATED INSULATION, ACCESSORIES, AND DUCTWORK WHERE SHOWN CROSS-HATCHED.
 - ▷ DEMOLISH EXISTING WALL-MOUNTED THERMOSTAT AND SENSOR.
 - ▷ DEMOLISH EXISTING INDOOR SPLIT SYSTEM AIR HANDLING UNIT AND ASSOCIATED FLEXIBLE CONNECTOR, PIPING, INSULATION, ACCESSORIES, AND DUCTWORK TO THE EXTENT SHOWN.
 - ▷ DEMOLISH EXISTING ROOFTOP HEAT PUMP AND ASSOCIATED FLEXIBLE CONNECTOR AND ACCESSORIES.

NO.	DATE	DESCRIPTION	BY
1	04/10/2020	Permit Set	JMF
2	07/02/2020	ISSUED FOR BIDS	JMF

ISSUED FOR BIDS: 07/02/2020
PRINCIPAL IN CHARGE: JMF
PROJECT ENGINEER: DJM
DRAWN BY: RWW

SHEET TITLE:
**HVAC DEMOLITION
SECOND FLOOR PLAN**

SHEET NO. _____ PROJ. NO. 019477.01

M042

REVISIONS TO BE MADE BY: PFA ENGINEERING
NO. 1: DEMOLITION OF EXISTING CEILING SUPPLY DIFFUSER AND ASSOCIATED INSULATION, ACCESSORIES, AND DUCTWORK WHERE SHOWN CROSS-HATCHED.
NO. 2: DEMOLITION OF EXISTING CEILING RETURN GRILLE AND ASSOCIATED INSULATION, ACCESSORIES, AND DUCTWORK WHERE SHOWN CROSS-HATCHED.
NO. 3: DEMOLITION OF EXISTING SIDEWALL SUPPLY DIFFUSER AND ASSOCIATED INSULATION, ACCESSORIES, AND DUCTWORK WHERE SHOWN CROSS-HATCHED.
NO. 4: DEMOLITION OF EXISTING WALL-MOUNTED THERMOSTAT AND SENSOR.
NO. 5: DEMOLITION OF EXISTING INDOOR SPLIT SYSTEM AIR HANDLING UNIT AND ASSOCIATED FLEXIBLE CONNECTOR, PIPING, INSULATION, ACCESSORIES, AND DUCTWORK TO THE EXTENT SHOWN.
NO. 6: DEMOLITION OF EXISTING ROOFTOP HEAT PUMP AND ASSOCIATED FLEXIBLE CONNECTOR AND ACCESSORIES.
ALL DIMENSIONS ARE TO FACE UNLESS OTHERWISE NOTED.
ALL RIGHTS RESERVED.

SCALE: 1/8" = 1'-0"
PLOT DATE: 4/9/2020
FILE NAME: 19088
PLOT SCALE: 1 = 96
RWW

COPYRIGHT © 2020
PRUETT, FORD & ASSOCIATES, INC.
ALBUQUERQUE, GEORGIA 3000