

GENERAL NOTES

- A. ALL METAL SHELVING SHALL BE DISASSEMBLED AND PRESERVED (COMPONENTS, BASES, FRAMES, SHELVES, HARDWARE SUPPORTS AND ENDS) FOR REINSTALLATION UNDO AS NOT IN SCOPE.
- B. SHELVING, SINGLE - FACED OR DOUBLE - FACED, IS 36" WIDE NOMINALLY UNO
- C. THE CONTRACTOR IS ENCOURAGED TO VISIT THE LOCATION TO ASSESS THE EXISTING SHELVING BEFORE SUBMITTING BID.
- D. THE CONTRACTOR IS RESPONSIBLE FOR ANY DAMAGE OR LOSS THAT OCCURS DURING DEMO, STORAGE, REPAIRS/REPLACEMENT AND REINSTALLATION AND MUST REPAIR OR REPLACE ANY COMPROMISED COMPONENTS AT NO COST TO THE OWNER.
- E. METAL SHELVING COMPONENTS (BASES, FRAMES OR SHELVES) WITH EXISTING GREEN PAINT SHALL NOT BE REINSTALLED.

LEGEND

- NO WORK
 - SINGLE - FACED SHELVING, BOLTED TO THE WALL (PRESERVE ALL HARDWARE WHEN DISASSEMBLING)
 - DOUBLE - FACED SHELVING, FREESTANDING (PRESERVE ALL HARDWARE WHEN DISASSEMBLING)
- EXISTING HEIGHT:**
- 84" HIGH
 - 82" HIGH
 - 86" HIGH
 - 42" HIGH
 - NOT IN SCOPE OWNER WILL REMOVE PRIOR TO CONSTRUCTION DEMO

SHEET KEYNOTES

1. DISASSEMBLE WOOD END PANEL (83 1/2" X 21 1/2") AS PART OF SHELVING SCOPE (PRESERVE ALL HARDWARE)
2. DISASSEMBLE METAL END PANEL (86 1/2" X 21 1/2") AS PART OF SHELVING SCOPE (PRESERVE ALL HARDWARE)
3. DISASSEMBLE METAL END PANEL (86 1/2" X 24 5/8") AS PART OF SHELVING SCOPE (PRESERVE ALL HARDWARE)
4. SPECIAL WIDTH (30"W) FRAME, BASE AND SHELVES TO REMAIN TOGETHER FOR REASSEMBLY
5. SPECIAL WIDTH (24"W) FRAME, BASE AND SHELVES TO REMAIN TOGETHER FOR REASSEMBLY
6. STARTER/ADDER SYSTEM, REQUIRES FRAME, BASE, SHELVES AND ALL HARDWARE TO REMAIN TOGETHER FOR REASSEMBLY (TOTAL OF 7 UNITS)
7. STARTER/ADDER SYSTEM, REQUIRES FRAME, BASE, SHELVES AND ALL HARDWARE TO REMAIN TOGETHER FOR REASSEMBLY (TOTAL OF 2 UNITS)
8. STARTER/ADDER SYSTEM, REQUIRES FRAME, BASE, SHELVES AND ALL HARDWARE TO REMAIN TOGETHER FOR REASSEMBLY (TOTAL OF 3 UNITS)
9. STARTER/ADDER SYSTEM, REQUIRES FRAME, BASE, SHELVES AND ALL HARDWARE TO REMAIN TOGETHER FOR REASSEMBLY (TOTAL OF 2 UNITS)
10. STARTER/ADDER SYSTEM, REQUIRES FRAME, BASE, SHELVES AND ALL HARDWARE TO REMAIN TOGETHER FOR REASSEMBLY (TOTAL OF 1 UNIT)



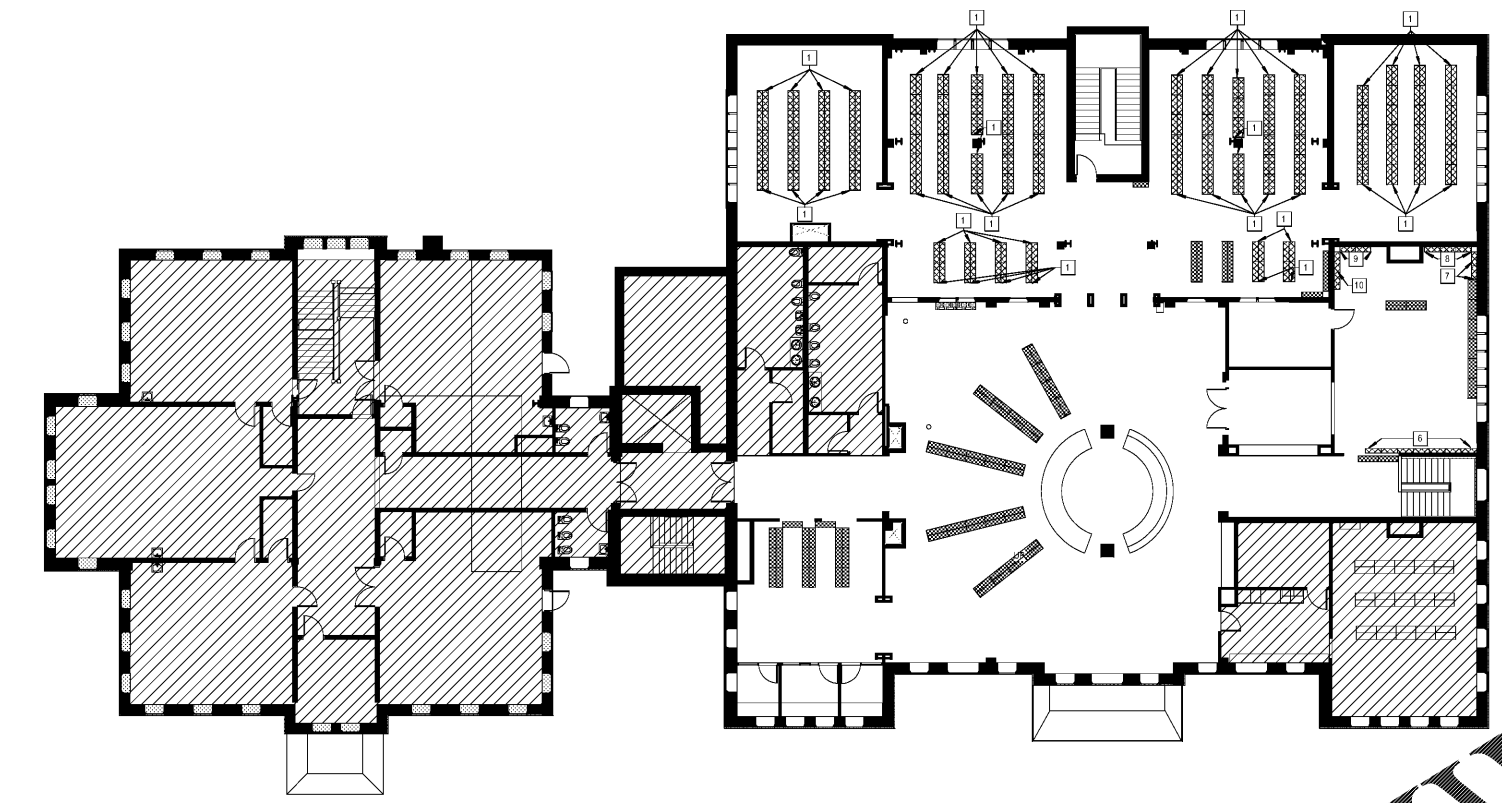
AIKEN COUNTY
AIKEN PUBLIC LIBRARY & NORTH WING
RENOVATION
314 CHESTERFIELD ST. S. AIKEN, SC

SHEET ISSUE		
NO.	DATE	DESCRIPTION
E	07/02/2020	ISSUED FOR BIDS

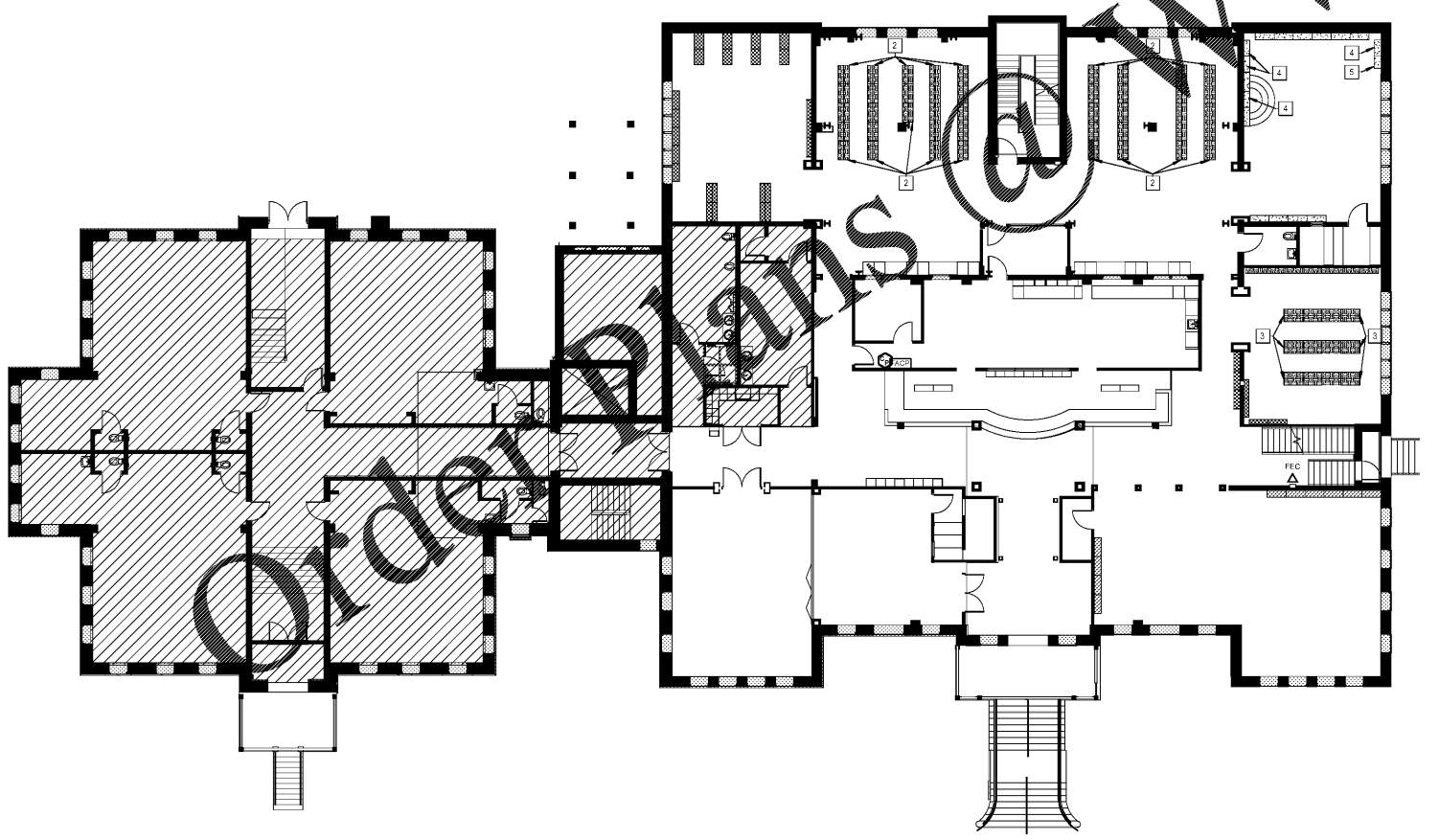
ISSUED FOR BIDS: 07/02/2020
PRINCIPAL IN CHARGE: DRM
PROJECT ARCHITECT: TA
DRAWN BY: MW

SHEET TITLE:
SHELVING DEMO PLAN

SHEET NO. PROJ. NO.
IF040 018477.01



SECOND LEVEL SHELVING DEMO PLAN
3/32" = 1'-0"



FIRST LEVEL SHELVING DEMO PLAN
3/32" = 1'-0"

www.LDILine.com