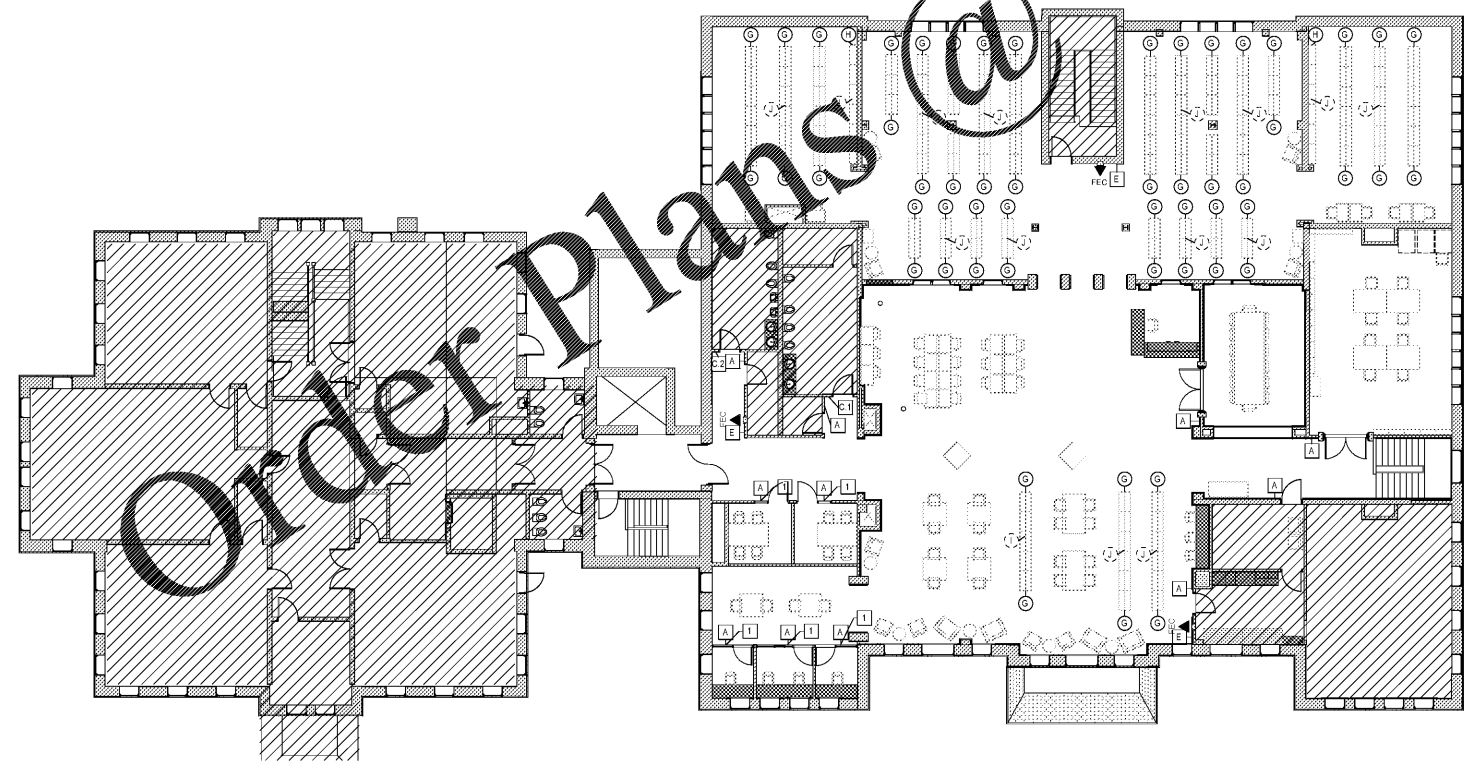


D  
C  
B  
A

1  
2  
3  
4  
5



**SIGNAGE LEGEND**

- INDICATES SIGN MOUNTED ON WALL OR GLASS
- INDICATES SIGN MOUNTED TO SHELVING END-PANEL
- ⊖ INDICATES SIGN MOUNTED ON TOP OF METAL SHELVING STRETCHER BAR, SHELVING CANOPY TOP OR COUNTERTOP
- \* DENOTES SIGN TYPE

**SIGNAGE GENERAL NOTES**

- A. GO SMALL, COORDINATE WITH VENDOR AND AHL TO INCLUDE ANY ADDITIONAL INTERIOR SIGN TYPES REQUIRED BY CODE OR LOCAL ORDINANCE IN ADDITION TO THE SIGN TYPES, LOCATIONS AND QUANTITIES OUTLINED IN THE DRAWING. ALLOWANCE FOR COORDINATION AND ADDITIONAL SIGNS SHALL BE INCLUDED IN BID PRICING.
- B. ALL COPY AND/OR ROOM NUMBERS SHALL BE VERIFIED WITH ARCHITECT AND OWNER PRIOR TO ORDERING. REF SIGN TYPES FROM THE HOOK-UP FOR APPROVAL.
- C. VENDOR IS RESPONSIBLE FOR CREATING PROPOSED SIGN NUMBERS AND PLAN.
- D. VENDOR IS RESPONSIBLE FOR COORDINATION, SIGN TYPES SIGN SHALL BE MOUNTED TO AND SHALL SECURE SIGNS ACCORDINGLY.
- E. IN ALL LOCATIONS WHERE SIGN SHALL BE INSTALLED ON GLASS, BACKING SHALL BE APPLIED ON SIGN SIDE OF GLASS TO COVER ALL HARDWARE AND MOUNTING METHODS.
- F. ORIGINAL DEDICATION PLAQUE TO BE PRESERVED AS INDICATED ON PLAN.

**SHEET KEY NOTES**

1. INSTALL VINYL BACKING ON SIGN SIDE OF GLASS AND MOUNT SIGN ON VINYL TO COVER ALL HARDWARE AND MOUNTING METHODS.
2. MOUNT SIGN ON COLUMN.
3. PRESERVED EXISTING DEDICATION PLAQUE SHALL BE REINSTALLED. DEDICATION PLAQUE TO MATCH EXISTING, COORDINATE WITH OWNER AND ARCHITECT.



CP001548T.USD

SEALS



AIKEN COUNTY  
 AIKEN PUBLIC LIBRARY & NORTH WING  
 RENOVATION  
 314 CHESTERFIELD ST S, AIKEN, SC

SHEET ISSUE			
NO.	DATE	DESCRIPTION	BY
E	07/02/2020	ISSUED FOR BIDS	

ISSUED FOR BIDS 07/02/2020

PRINCIPAL IN CHARGE: DRM  
 PROJECT ARCHITECT: TA  
 DRAWN BY: MW

SHEET TITLE:  
**SECOND LEVEL  
 INTERIOR SIGNAGE  
 COORDINATION PLAN**

SHEET NO. PROJ. NO.  
 019477.01

ID710B

AI SECOND LEVEL INTERIOR SIGNAGE COORDINATION PLAN 3/32" = 1'-0"