

SIGNAGE LEGEND

- INDICATES SIGN MOUNTED ON WALL OR GLASS
- INDICATES SIGN MOUNTED TO SHELVING END PANEL
- ⊖ INDICATES SIGN MOUNTED ON TOP OF METAL SHELVING STRETCHER BAR, SHELVING CANOPY TOP OR COUNTERTOP
- * DENOTES SIGN TYPE

SIGNAGE GENERAL NOTES

- A. GC SHALL COORDINATE WITH VENDOR AND AHJ TO INCLUDE ANY ADDITIONAL INTERIOR SIGN TYPES REQUIRED BY CODE OR LOCAL ORDINANCE IN ADDITION TO THE SIGN TYPES, LOCATIONS AND QUANTITIES OUTLINED IN THE DRAWINGS. ALLOWANCE FOR COORDINATION AND ADDITIONAL SIGNS SHALL BE INCLUDED IN BID PRICING.
- B. ALL COPY AND/OR ROOM NUMBERS SHALL BE VERIFIED WITH ARCHITECT AND OWNER PRIOR TO ORDERING. REF SIGN TYPES REQUIRING MOCK-UPS FOR APPROVAL.
- C. VENDOR IS RESPONSIBLE FOR CREATING PROPOSED ROOM NUMBERS AND PLAN.
- D. VENDOR IS RESPONSIBLE FOR COORDINATING ALL SUBSTITUTES. SIGNS SHALL BE MOUNTED TO AND SHALL SECURE SIGNS ACCORDING TO THE SIGNAGE LEGEND.
- E. IN ALL LOCATIONS WHERE SIGN SHALL BE INSTALLED ON VINYL BACKING SHALL BE APPLIED ON SIGN SIDE OF GLASS. MATERIAL, ALLOWANCE, MOUNTING METHODS.
- F. ORIGINAL DEDICATION PLAQUE TO BE PRESERVED AND INDICATED ON PLAN.

SHEET KEYNOTES

- 1. INSTALL VINYL BACKING ON SIGN OF GLASS AND MOUNT SIGN ON VINYL. RECALL ALL HARDWARE AND MOUNTING METHODS.
- 2. PRESERVE EXISTING DEDICATION PLAQUE. SHALL BE REINSTALLED. NEW DEDICATION PLAQUE TO MATCH EXISTING. COORDINATE WITH OWNER AND ARCHITECT.



CONSULT LOGO

SEAL

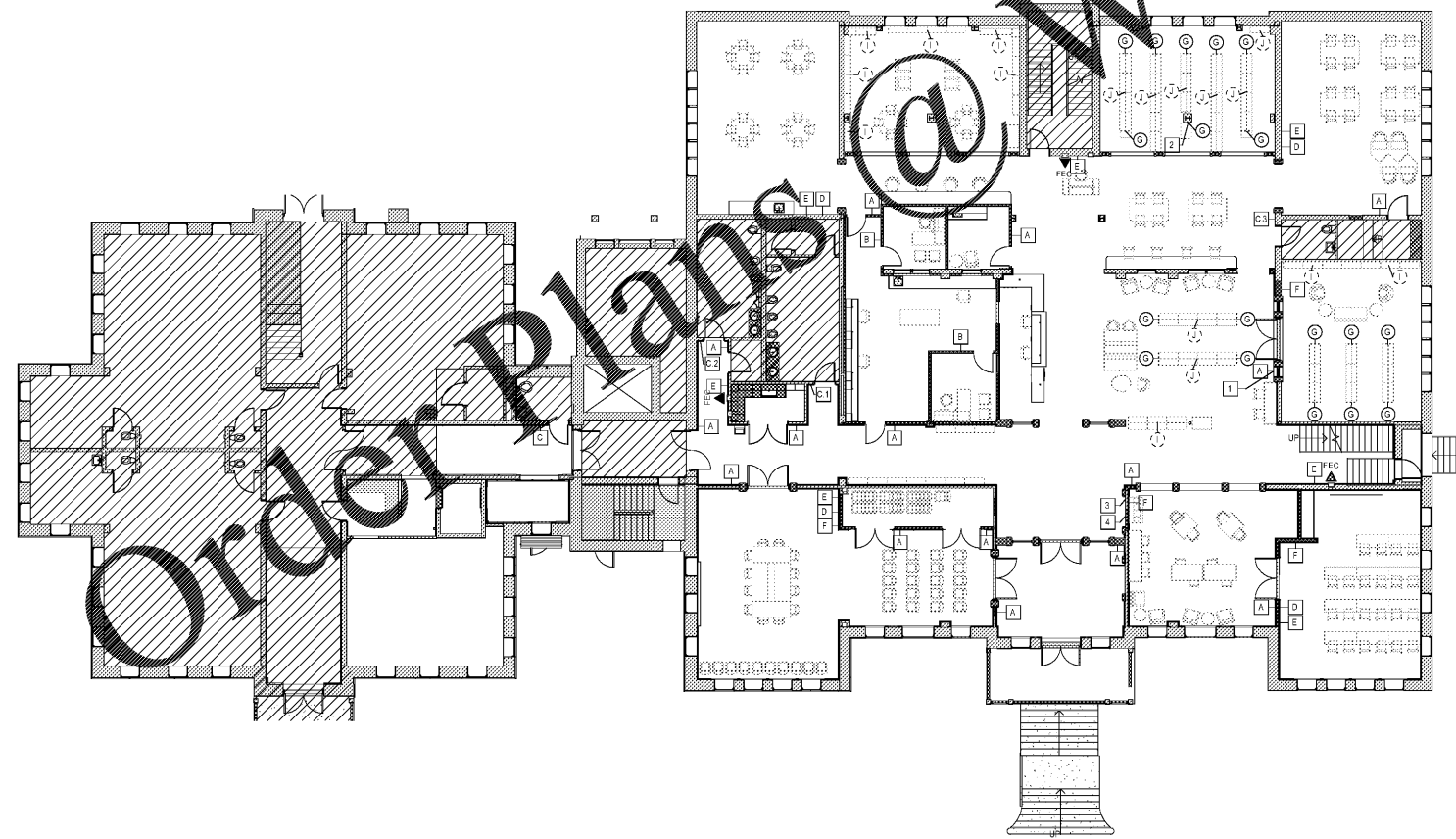


AIKEN COUNTY
**AIKEN PUBLIC LIBRARY & NORTH WING
 RENOVATION**
 314 CHESTERFIELD ST S, AIKEN, SC

SHEET ISSUE			
NO.	DATE	DESCRIPTION	BY
E	07/02/2020	ISSUED FOR BIDS	

ISSUED FOR BIDS 07/02/2020
 PRINCIPAL IN CHARGE DRM
 PROJECT ARCHITECT TA
 DRAWN BY MW
 SHEET TITLE:
**FIRST LEVEL INTERIOR
 SIGNAGE
 COORDINATION PLAN**
 SHEET NO. PROJ. NO.
 019477.01

ID710A



FIRST LEVEL INTERIOR SIGNAGE COORDINATION PLAN
 3/32" = 1'-0"

WWW.LDILine.com

Order Plans

THIS DOCUMENT IS THE PROPERTY OF LDILine.com. IT IS TO BE USED ONLY FOR THE PROJECT AND SITE SPECIFICALLY IDENTIFIED IN THE TITLE BLOCK. IT IS NOT TO BE REPRODUCED, COPIED, OR TRANSMITTED IN ANY FORM OR BY ANY MEANS, ELECTRONIC OR MECHANICAL, INCLUDING PHOTOCOPYING, RECORDING, OR BY ANY INFORMATION STORAGE AND RETRIEVAL SYSTEM, WITHOUT THE WRITTEN PERMISSION OF LDILine.com. ALL RIGHTS RESERVED.