

FURNITURE COORDINATION LEGEND

- ⊙ FURNITURE OR EQUIPMENT WITH MODULAR POWER
- △ FURNITURE OR EQUIPMENT WITH MODULAR POWER AND DATA
- ⊗ FURNITURE WITH HARD-WIRE POWER AND MODULAR DATA
- ▨ NOT IN SCOPE

FURNITURE COORDINATION NOTES

- A. FURNITURE IS N/C AND PLAN IS PROVIDED TO FACILITATE COORDINATION ONLY. REF SPECIFIC DISCIPLINE FOR DETAILS AND SPECIFICATIONS.
- B. REFERENCE LANDSCAPE PLANS, DETAILS AND SCHEDULES FOR EXTERIOR FURNITURE THAT SHALL BE FURNISHED AND INSTALLED BY THE CONTRACTOR.
- C. FOR ALL LOCATIONS NOTED TO RECEIVE HARDWIRED FURNITURE, THE RESPONSIBILITY OF THE CONTRACTOR TO HAVE AN ELECTRICIAN SITE TO CONNECT THE FURNITURE W/HP TO BUILDING POWER.

**mcmilian
pazdan
smith**
ARCHITECTURE

CONSULTANT LOGO

SEALS



AIKEN COUNTY
**AIKEN PUBLIC LIBRARY & NORTH WING
RENOVATION**
314 CHESTERFIELD ST. S. AIKEN, SC

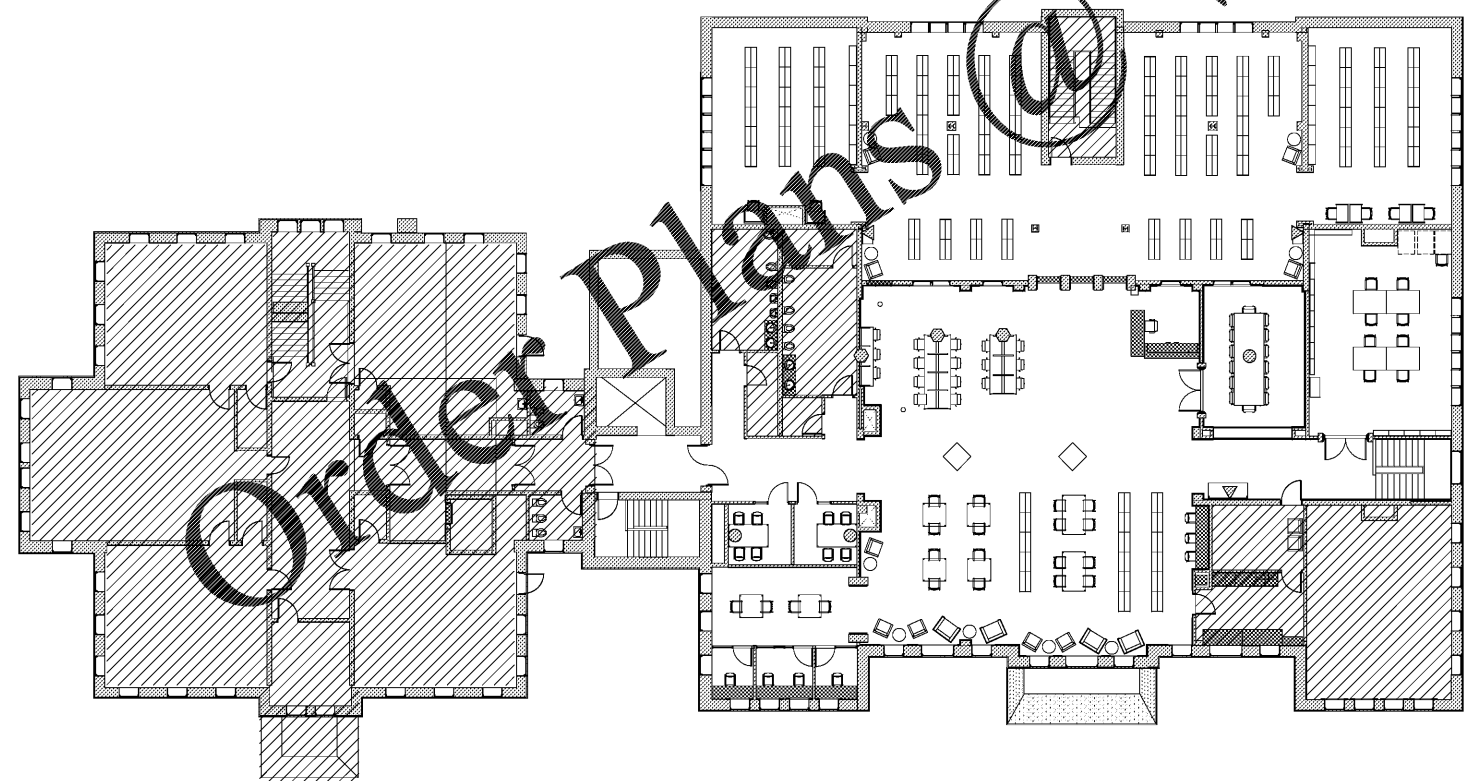
SHEET ISSUE		
NO.	DATE	DESCRIPTION
B	03/06/2020	DD SET
D	04/10/2020	PERMIT SET
E	07/02/2020	ISSUED FOR BIDS

ISSUED FOR BIDS: 07/02/2020
PRINCIPAL IN CHARGE: DRM
PROJECT ARCHITECT: TA
DRAWN BY: Author

SHEET TITLE:
**SECOND LEVEL
FURNITURE
COORDINATION PLAN**

SHEET NO. PROJ. NO.
019477.01

ID410B



A1 SECOND LEVEL FURNITURE COORDINATION PLAN
3/32" = 1'-0"

Order Plans @ WWW.LDILine.com