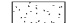


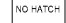




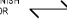


FLOOR FINISH LEGEND

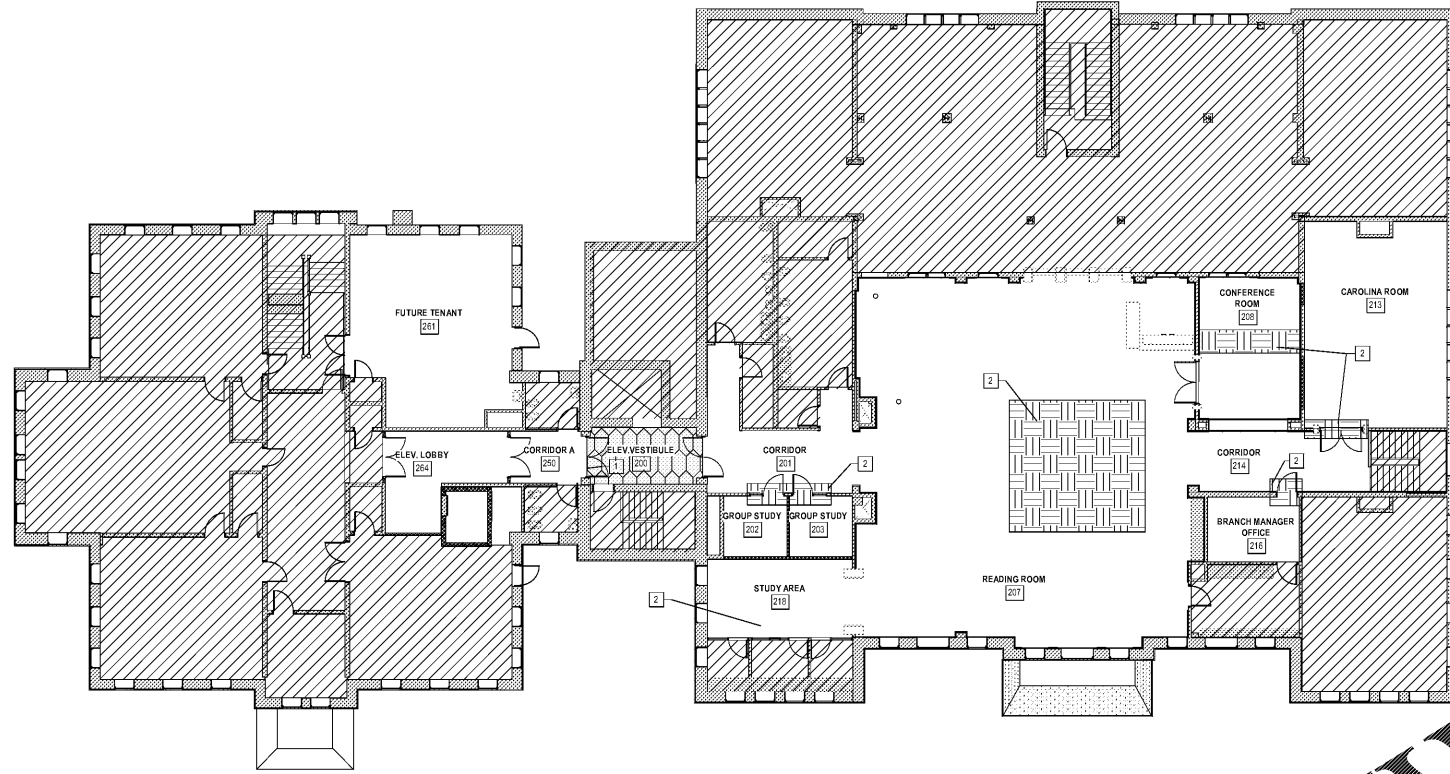
-  CPT-1
-  CPT-2
-  CPT-4
-  NO HATCH
-  ADD ALTERNATE CPT-1  
BASE E.P. ETR
-  NOT IN PHASE
-  NO WORK
-  PATCH TO MATCH EXISTING
-  INDICATES INSTALLATION DIRECTION OF PLANKS

FLOOR FINISH NOTES

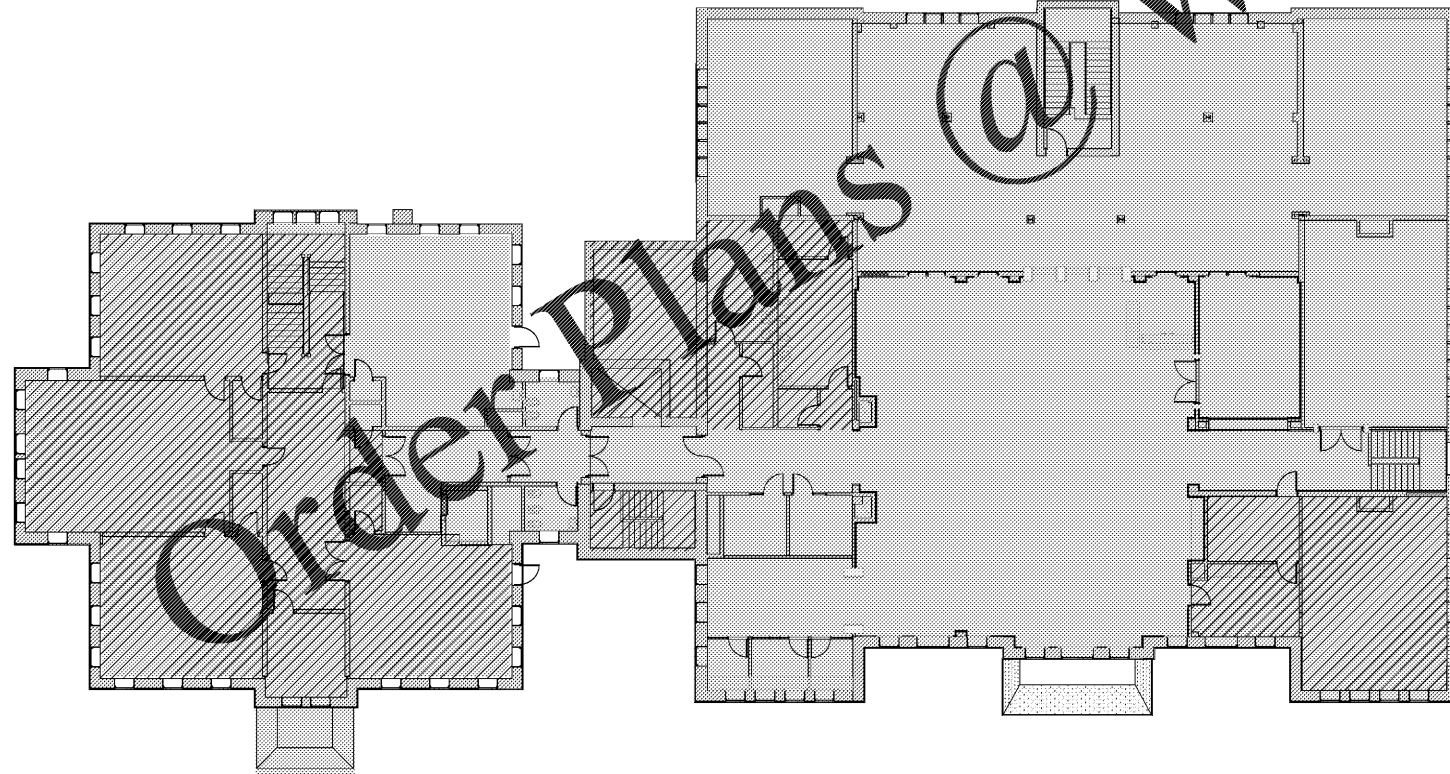
- A. REF ROOM FINISH SCHEDULE FOR FLOOR FINISH SELECTION. FLOOR FINISH PLANK CHARACTERS MUST BE CONSISTENT AND TERMINAL LOCATIONS NOT EVIDENT IN SCHEDULE.
- B. INSTALL ADA COMPLIANT TRANSITION STRIPS AT THRESHOLD BETWEEN DIFFERING FLOOR MATERIALS AND
- C. FLOOR MATERIAL TRANSITIONS BETWEEN ROOMS SHALL OCCUR AT THE CENTERLINE OF OPENING IN DOOR WHILE IN THE CLOSED POSITION. UNDO USE APPROPRIATE TOLERANCE SELECTION WHERE FLOORING MATERIAL TRANSITION DOES NOT MEET TYPICAL TOLERANCE WHEN MATERIAL HEIGHT DOES NOT SATISFY TRANSITION STRIP TOLERANCE.

SHEET KEYNOTES

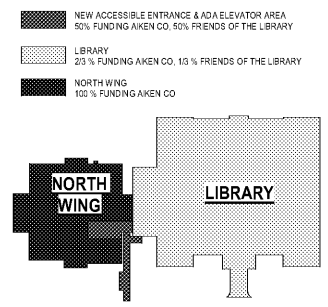
1. INSTALL TRS-1 IF ADD ALTERNATE FOR CPT-1 IS ACCEPTED
2. CONTRACTOR RESPONSIBLE FOR INSPECTING EXISTING CARPET AND PATCHING AS NEEDED WITH FULL CARPET TILES (NO SLIVERS).



01 SECOND LEVEL FLOOR FINISH PLAN - PHASE I  
3/32" = 1'-0"



01 SECOND LEVEL FLOOR FINISH PLAN - PHASE II  
3/32" = 1'-0"



AIKEN PUBLIC LIBRARY RENOVATION PHASE II & PHASE III



AIKEN COUNTY  
AIKEN PUBLIC LIBRARY & NORTH WING  
RENOVATION  
314 CHESTERFIELD ST. S. AIKEN, SC

SHEET ISSUE			
NO.	DATE	DESCRIPTION	BY
B	03/06/2020	DD SET	
D	04/10/2020	PERMIT SET	
E	07/02/2020	ISSUED FOR BIDS	

ISSUED FOR BIDS 07/02/2020  
PRINCIPAL IN CHARGE DRM  
PROJECT ARCHITECT TA  
DRAWN BY MNW

SHEET TITLE  
SECOND LEVEL FLOOR  
FINISH PLAN

SHEET NO. PROJ. NO.  
018477.01

ID310B