

AIKEN COUNTY  
AIKEN PUBLIC LIBRARY & NORTH WING  
RENOVATION  
314 CHESTERFIELD ST. S. AIKEN, SC

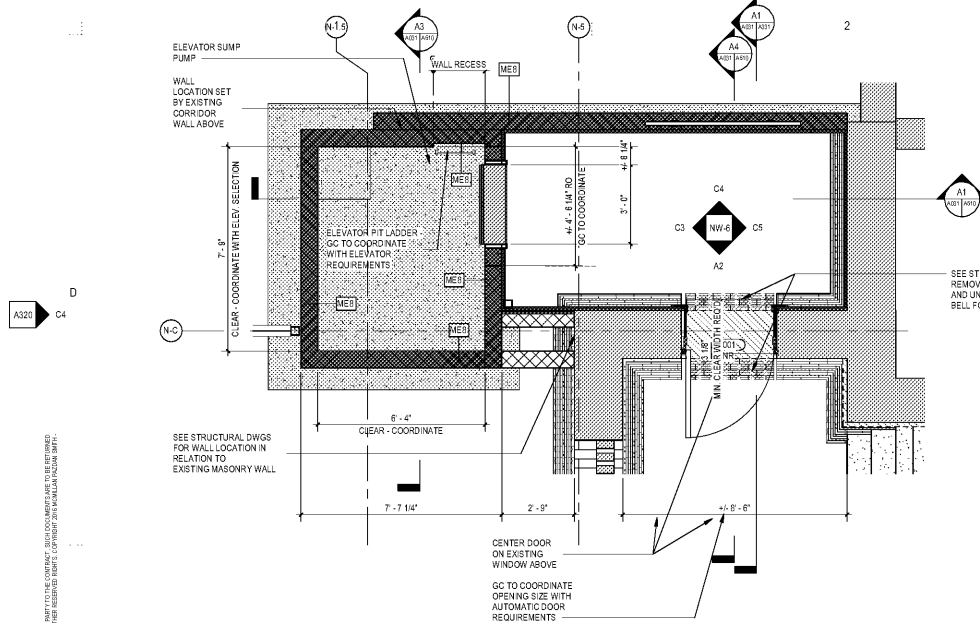
NO.	DATE	DESCRIPTION	BY
A	01/27/2020	SD PRICING SET	
B	03/05/2020	DO SET	
D	04/10/2020	PERMIT SET	
E	07/02/2020	ISSUED FOR BIDS	

ISSUED FOR BIDS 07/02/2020  
PRINCIPAL IN CHARGE DRM  
PROJECT ARCHITECT TA  
DRAWN BY JTP

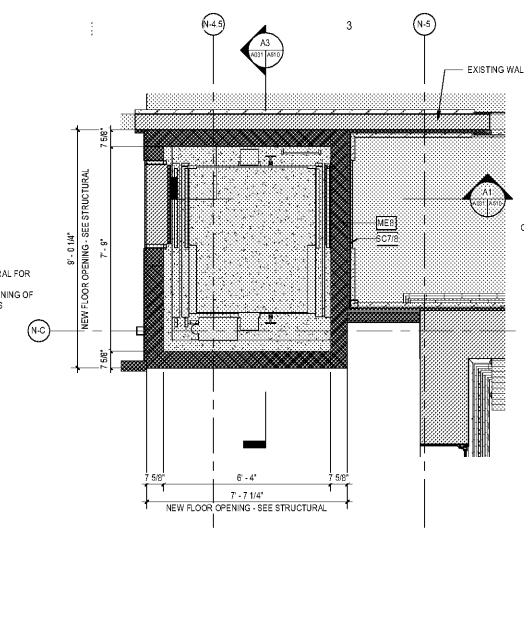
SHEET TITLE:  
ELEVATOR PLAN, WALL  
SECTIONS, DETAILS

SHEET NO. PROJ. NO.  
A510 019477.01

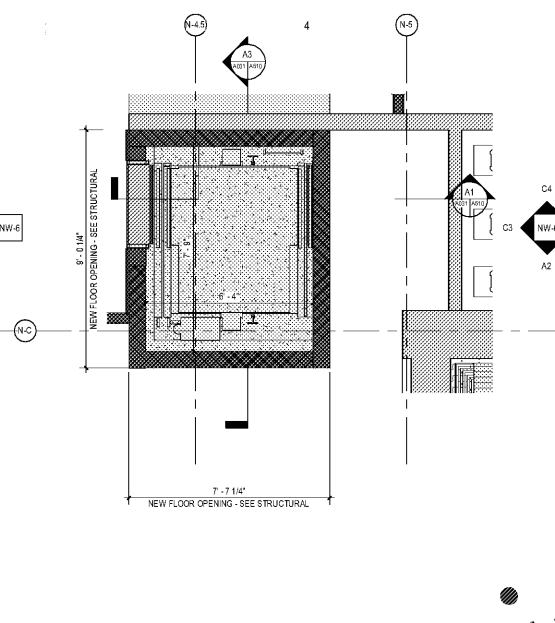
A510



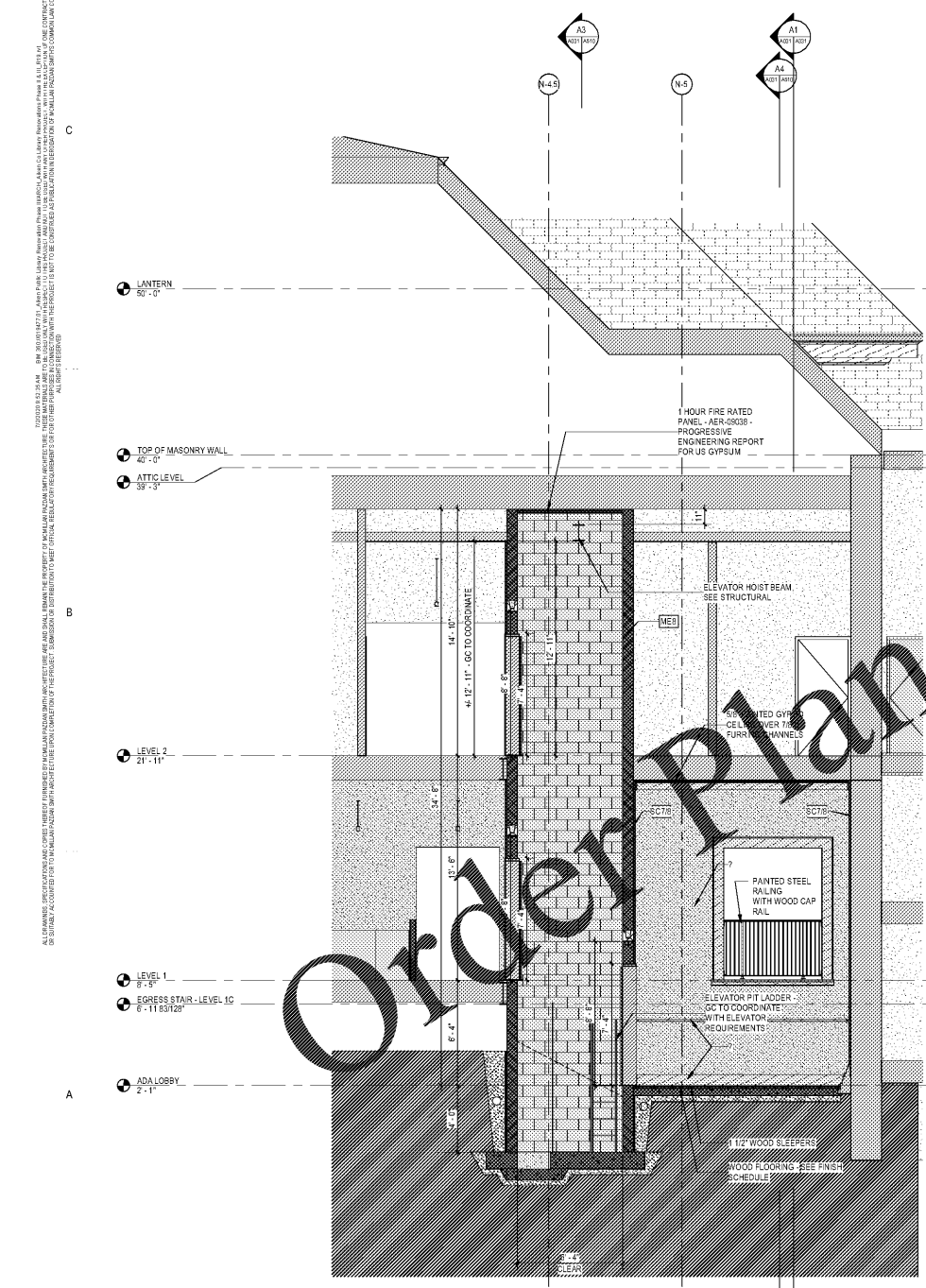
D1 ENLARGED PLAN - ADA LOBBY  
3/8" = 1'-0"



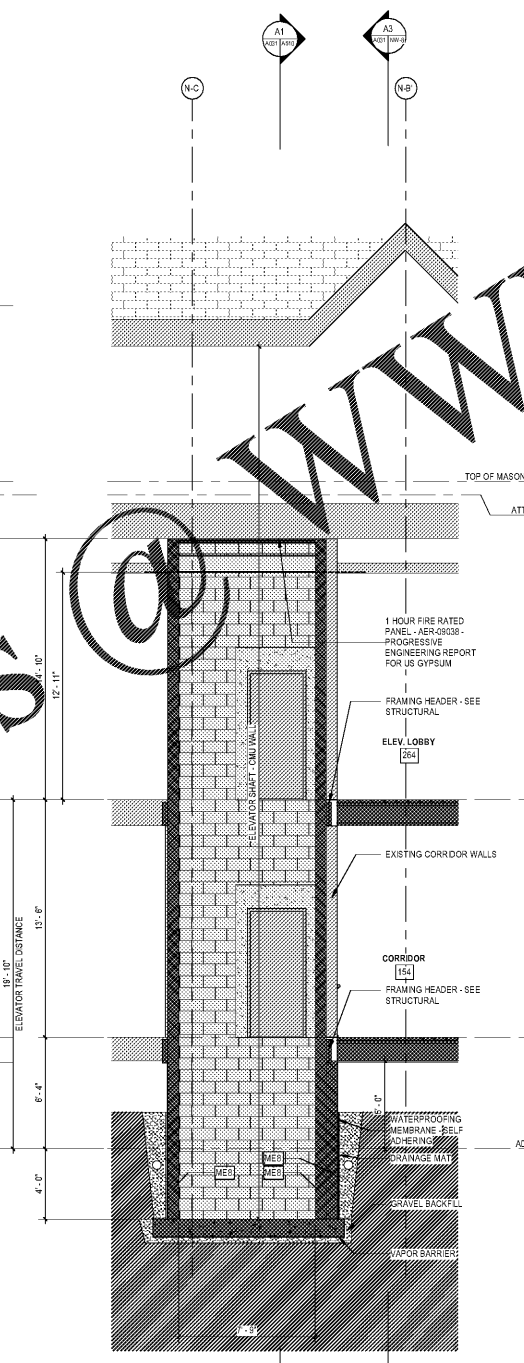
D3 ENLARGED FIRST FLOOR ELEVATOR PLAN  
3/8" = 1'-0"



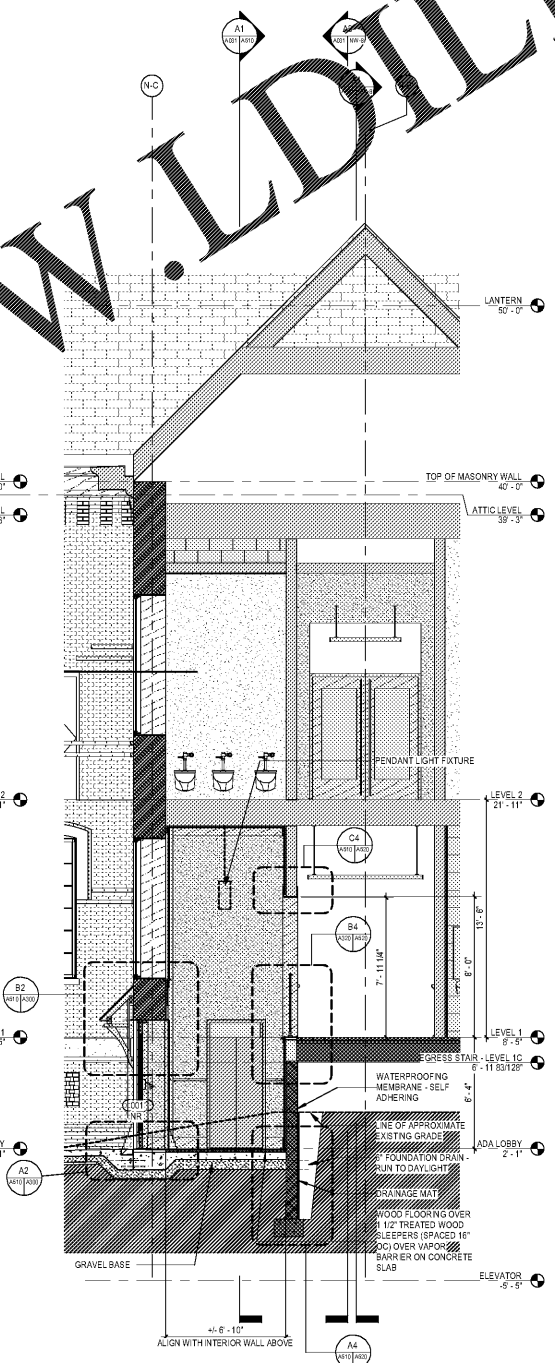
D4 ENLARGED SECOND FLOOR ELEVATOR PLAN  
3/8" = 1'-0"



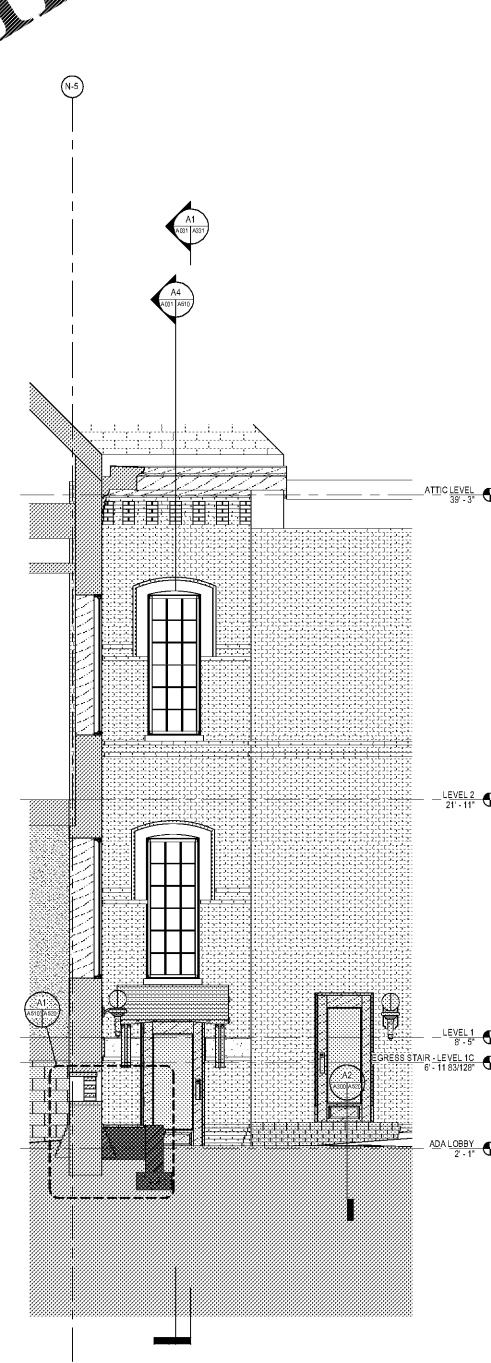
A1 ELEVATOR LOBBY LONGITUDINAL SECTION  
1/4" = 1'-0"



A3 ELEVATOR SHAFT CROSS SECTION  
1/4" = 1'-0"



A4 WALL SECTION - ACCESSIBLE ENTRANCE LOBBY  
1/4" = 1'-0"



A5 WALL SECTION - N. WING CLASSROOM W/ EXT. PLANTER  
1/4" = 1'-0"

Order Plans @

WWW.LDIDLine.com

ALL RIGHTS RESERVED. NO PART OF THIS DOCUMENT IS TO BE REPRODUCED OR TRANSMITTED IN ANY FORM OR BY ANY MEANS, ELECTRONIC OR MECHANICAL, INCLUDING PHOTOCOPYING, RECORDING, OR BY ANY INFORMATION STORAGE AND RETRIEVAL SYSTEM, WITHOUT THE WRITTEN PERMISSION OF THE ARCHITECT. THE ARCHITECT'S LIABILITY IS LIMITED TO THE PROFESSIONAL SERVICES PROVIDED HEREIN. THE ARCHITECT DOES NOT WARRANT THE ACCURACY OF ANY INFORMATION PROVIDED HEREIN. THE ARCHITECT'S LIABILITY IS LIMITED TO THE PROFESSIONAL SERVICES PROVIDED HEREIN. THE ARCHITECT DOES NOT WARRANT THE ACCURACY OF ANY INFORMATION PROVIDED HEREIN.