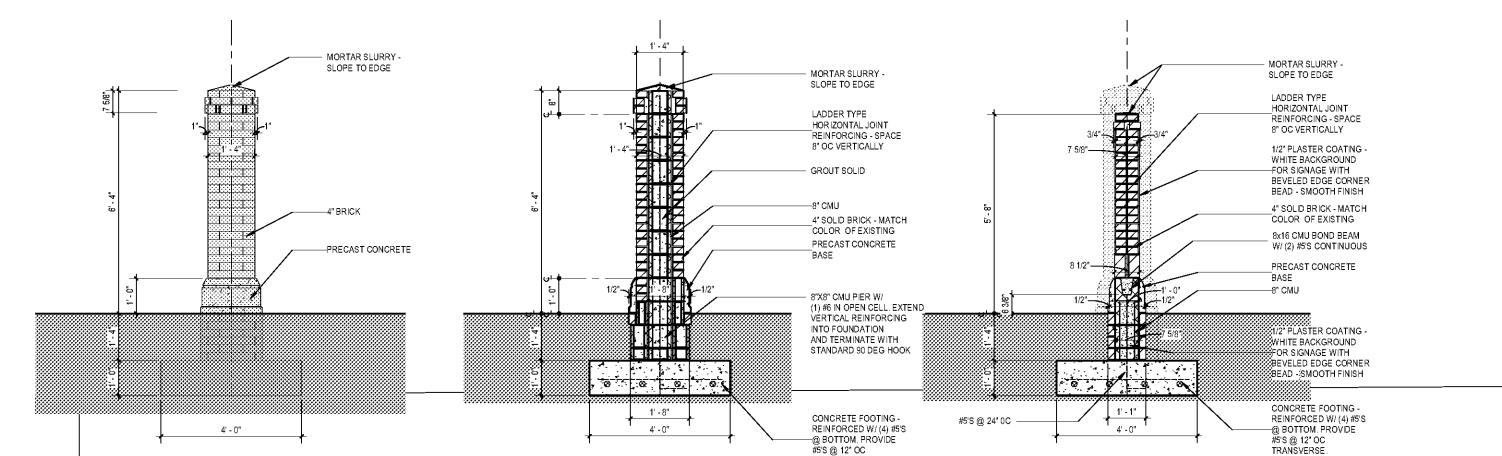


CONSULTANT LOGO

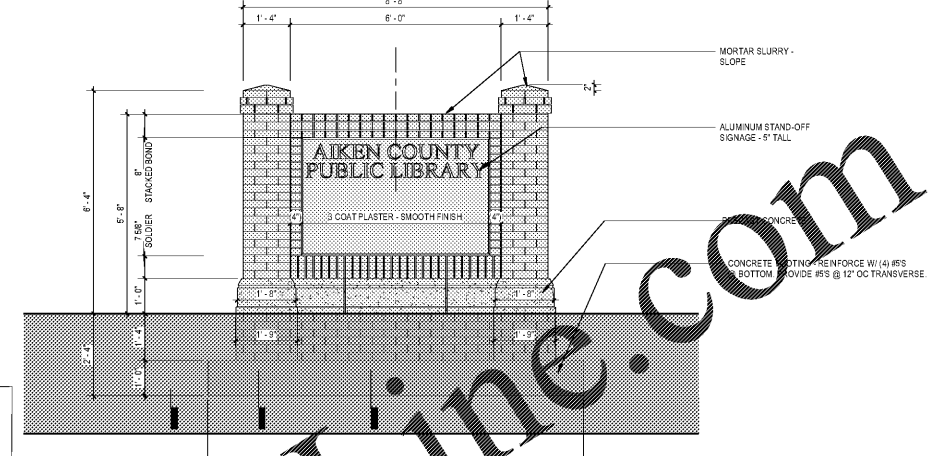
SEALS



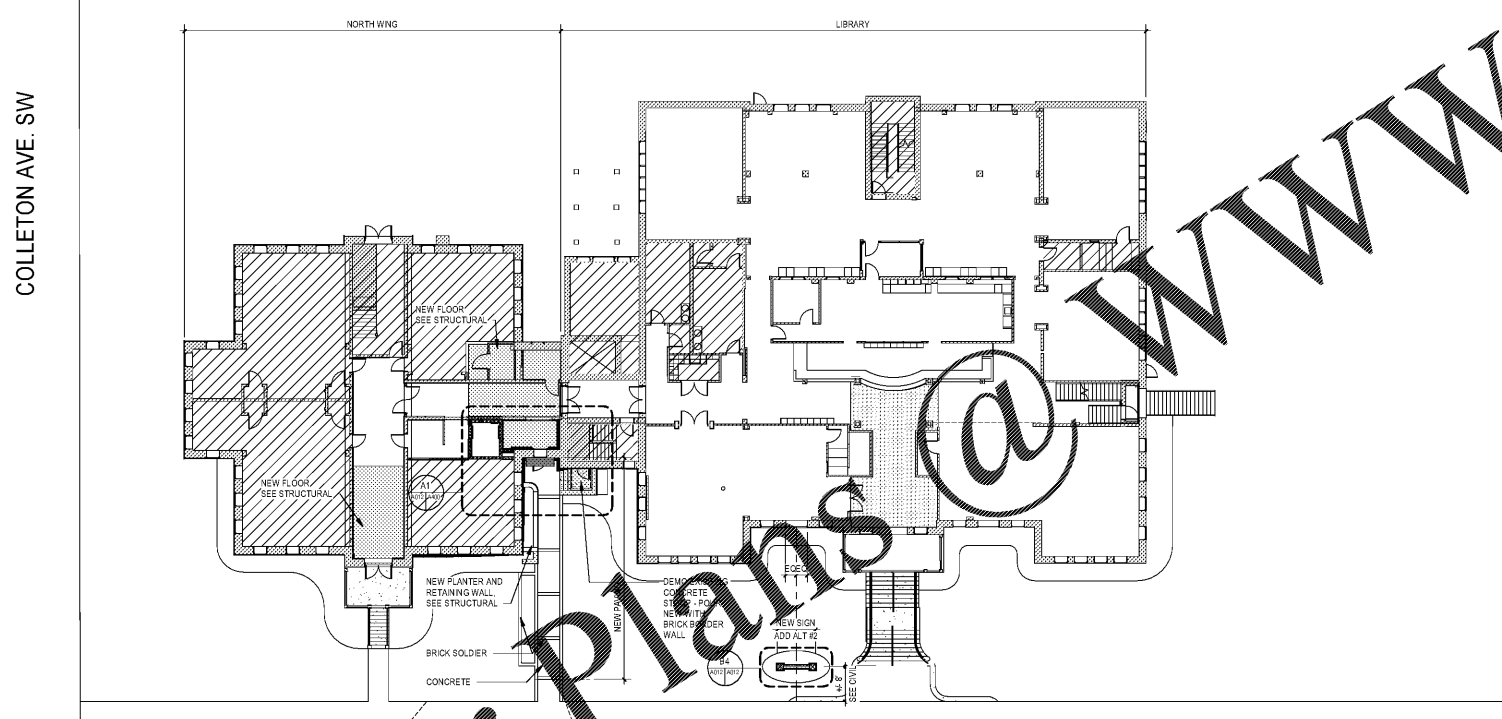
AIKEN COUNTY
AIKEN PUBLIC LIBRARY & NORTH WING
RENOVATION
314 CHESTERFIELD ST. S, AIKEN, SC



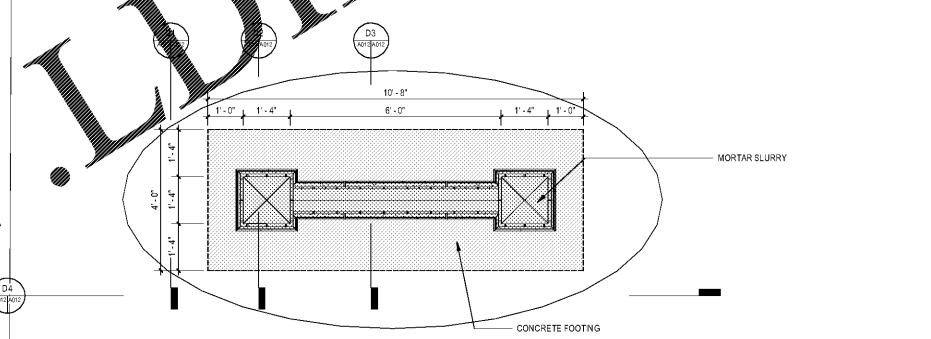
D1 SIDE ELEVATION 1/2" = 1'-0"
D2 SECTION THROUGH PIER 1/2" = 1'-0"
D3 SECTION THROUGH SIGNAGE PLANE 1/2" = 1'-0"



D4 ENTRY SIGN - FRONT ELEVATION 1/2" = 1'-0"



NOTE: WORK SHOWN THIS PLAN DONE ON PHASE 2A. (2B WORK NOT SHOWN.)



Provide two (2) ground mounted LED sign lights, one on each side of the sign to provide optimal illumination. Approximate setback shall be 6" to 7" from base of sign and centered on sign. Coordinate location with landscaping. Fixtures shall be stainless steel as far as possible. Set stanchion in a concrete base which shall be flush with grade. Turn conduit up concealed inside stanchion. Fixtures shall be circled with 3/4" conduit, 3/8" dia to each fixture and led into the exterior lighting circuit LA-20 (serving new pole lights type "LP" as shown on plan VEG02 on Sheet E602.

Fixture shall be as manufactured by Lithonia or approved equal.

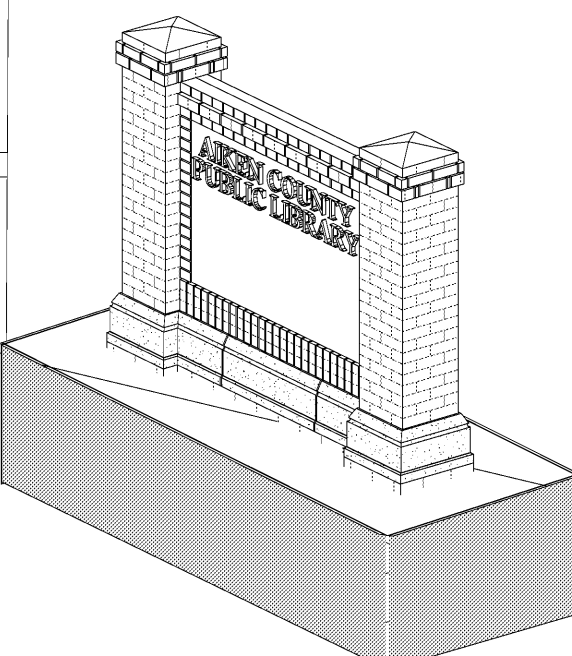
L.E.D. GROUND MOUNTED FLOOD LIGHT WITH DIE-CAST ALUMINUM HOUSING, INTEGRAL HEAT SINK, U.L. OUTDOOR WET LISTED, TOP VISOR, PROVIDE STANCHION PROVIDE WITH "P2" PERFORMANCE PACKAGE AND HORIZONTAL FLOOD OPTICS. FINISH SHALL BE BLACK ON FIXTURE AND STANCHION. AIM AS NEEDED TO ILLUMINATE SIGNAGE.

LUMEN: MINIMUM 4851 DELIVERED LUMENS AT MAXIMUM 47 WATTS, 4000K LAMP COLOR.

DRIVER: INTEGRAL, MULTIVOLT.

Lithonia # DSXF-LED-P2-HMF-MVOLT-TNK-UBV-STANCHION-08LJ0

D5 MONUMENTAL SIGN - PLAN - ADD ALTERNATE #2 1/2" = 1'-0"



A4 AXON - ENTRY SIGN 1/8" = 1'-0"

WORK EXTENTS LEGEND

	NO WORK AREA - NOT IN SCOPE - (does not indicate mechanical, fire protection, or data scope - see map and to drawings for further information)
	WORK AREA
	WORK NOT PERFORMED IN THIS PHASE
	NEW WORK: RED - (CUT VIEW); PINK - (PROJECTION VIEW)
	DEMOLITION

A1 ARCHITECTURAL SITE PLAN 1/8" = 1'-0"

SHEET ISSUE

NO.	DATE	DESCRIPTION	BY
A	01/27/2020	SD PRICING SET	DRM
B	03/05/2020	DO SET	TA
D	04/10/2020	PERMIT SET	JTP
E	07/02/2020	ISSUED FOR BIDS	

ISSUED FOR BIDS 07/02/2020
PRINCIPAL IN CHARGE: DRM
PROJECT ARCHITECT: TA
DRAWN BY: JTP

SHEET TITLE:
ARCHITECTURAL SITE PLAN

SHEET NO. PROJ. NO. 018477.01

A012