

ABBREVIATIONS LIST

ABBREVIATION NOTES

- 1. GENERALLY TERMS ARE SPELLED OUT AND ABBREVIATIONS USED ONLY TO REDUCE TIME AND SPACE OR WHERE APPROPRIATE OR TO IMPROVE CLARITY.

Table with 3 columns of abbreviations and their corresponding full names, including terms like AIR CONDITION, ARCHITECT, and BALCONY.

Table with 3 columns of abbreviations and their corresponding full names, including terms like FIRE HOSE/FIRE HYDRANT, MILLWORK, and SOLID CORE WOOD DOOR.

STANDARD GRAPHICS AND SYMBOLS

LINE STYLES

Table listing line styles (PEN 3 through PEN 8) and their corresponding line types.

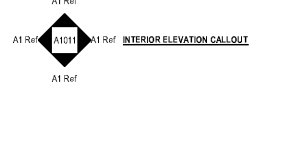
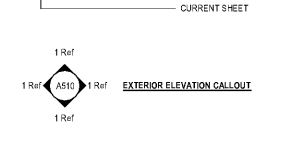
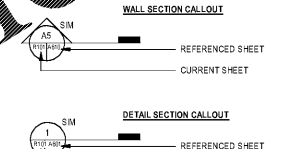
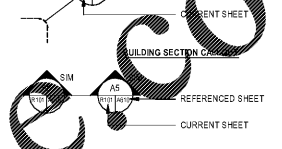
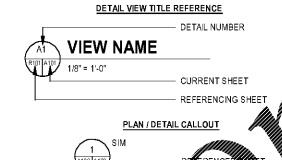
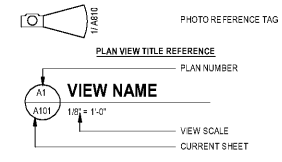
ANNOTATIONS

Table listing various annotations (FACE DIMENSION, CENTERLINE DIMENSION, etc.) and their corresponding symbols.

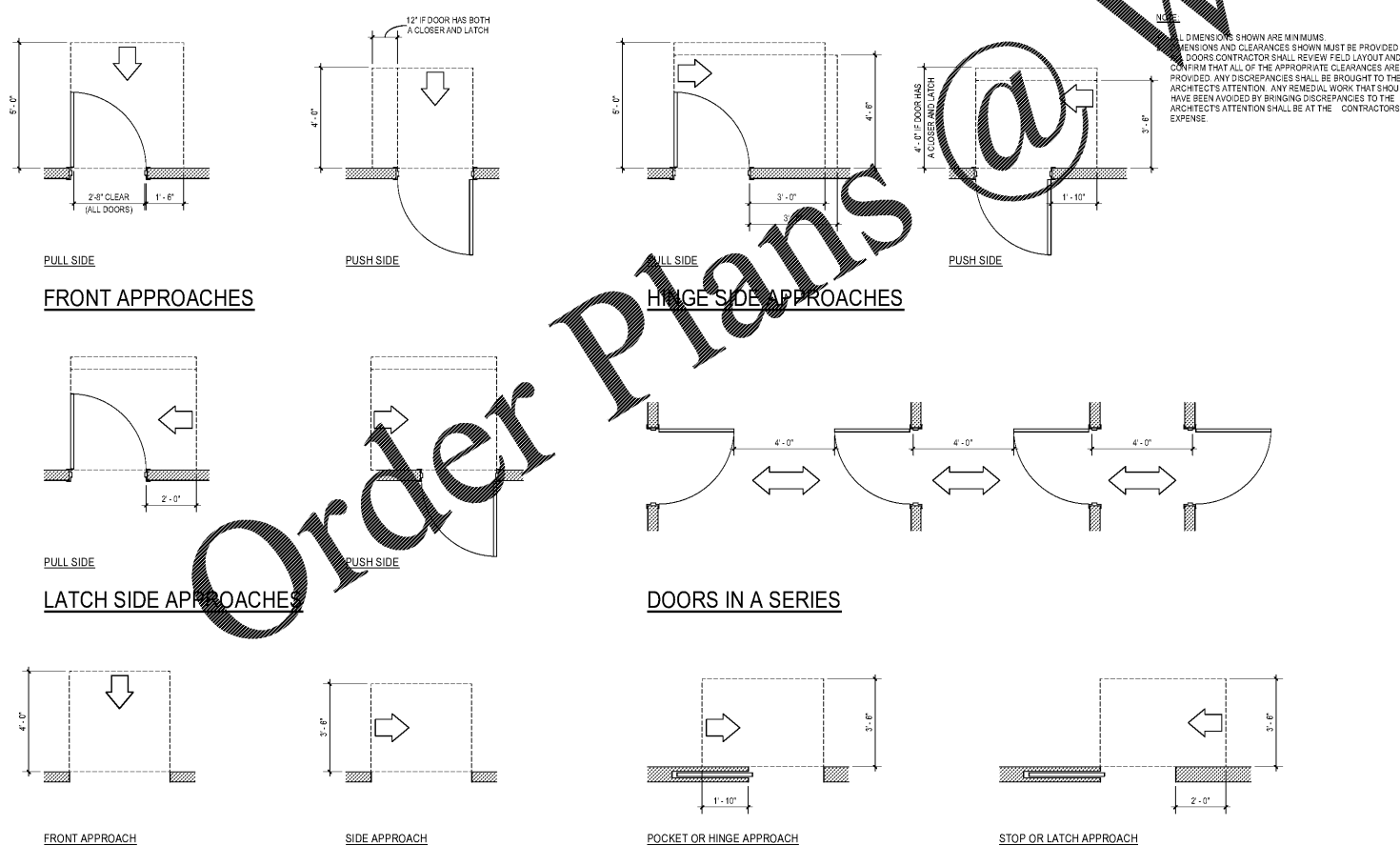
ANNOTATIONS

Table listing annotations (NORTH, PROJECT NORTH, TRUE NORTH, etc.) and their corresponding symbols.

VIEW REFERENCE



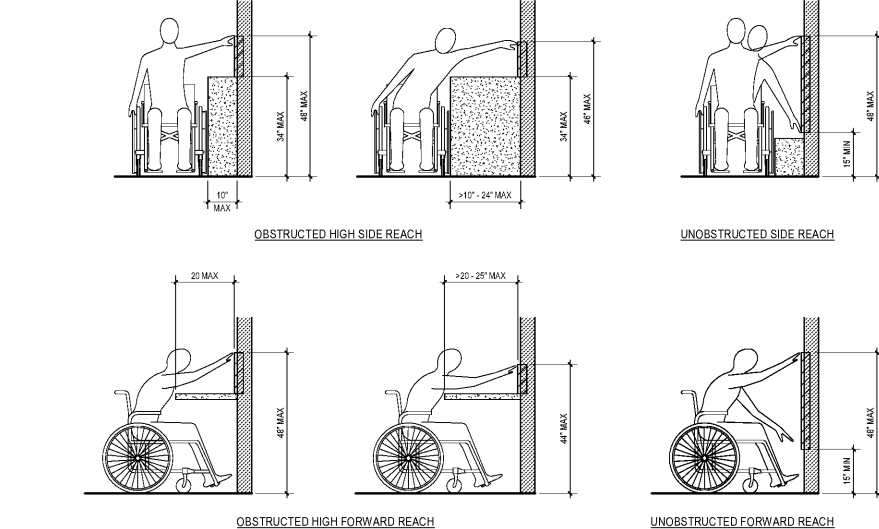
MANUEVERING CLEARANCES AT DOORS



TYPICAL MATERIALS

Table listing typical materials (BATT INSULATION, CONCRETE, BRICK, etc.) and their corresponding hatching patterns.

REACH RANGES



ADVISORY 308.1 GENERAL. THE FOLLOWING TABLE PROVIDES GUIDANCE ON REACH RANGES FOR CHILDREN ACCORDING TO AGE WHERE BUILDING ELEMENTS SUCH AS COAT HOOKS, LOCKERS, OR OPERABLE PARTS ARE DESIGNED FOR USE PRIMARILY BY CHILDREN.

Table showing children's reach ranges for forward or side reach, high (max), and low (min) for ages 3 and 4, ages 5 through 8, and ages 9 through 12.

Architectural logo for mcmilian pazdan smith ARCHITECTURE, including contact information and professional seals.

AIKEN COUNTY AIKEN PUBLIC LIBRARY & NORTH WING RENOVATION 314 CHESTERFIELD ST. AIKEN, SC

Table with columns SHEET ISSUE, NO., DATE, DESCRIPTION, and BY, listing revision details.

ISSUED FOR BIDS 07/02/2020 PRINCIPAL IN CHARGE PROJECT ARCHITECT DRAWN BY DRM TA JTP

SHEET TITLE: ABBREVIATION, SYMBOLS AND LEGENDS

SHEET NO. A001 PROJ. NO. 019477.01