

- PLAN REFERENCE NOTES:**
- ALL "EX" EMERGENCY & EXIT LIGHTING FIXTURES SHALL BE CONNECTED AHEAD OF ROOM/AREA SWITCHES PER NATIONAL ELECTRICAL CODE (NEC) ARTICLE 700-12(1).
 - PROVIDE RACEWAYS, WIRING, AND LAMPS (F40TB) FOR ALL LIGHT FIXTURES FURNISHED W/ THE FREEZER/COOLER/STORAGE UNIT. LIGHT FIXTURES SHALL BE INSTALLED BY ELECTRICAL CONTRACTOR. COORDINATE THE INSTALLATION OF SWITCHES AND PLATES WITH THE EQUIP. SUPPLIER.
 - COORDINATE THE INSTALLATION OF THE MANSARD WALL MOUNTED FIXTURE "E" (JELLY JAR LIGHTS) WITH THE AWNING STRUCTURAL LAYOUT. THE LIGHTS SHOULD BE CENTERED ABOVE EACH WINDOW GLAZING.
 - ROUTE CIRCUIT VIA EXTERIOR/SIGN LIGHTING CONTACTOR (SEE CONTROL SCHEMATIC DIAGRAM SHEET).
 - ALL GOOSENECK "LX-1" FIXTURES TO BE CENTERED OVER THE SHUTTERS AND THE AWNINGS ACCORDING TO THE ELEVATIONS. THE MIDDLE GOOSENECK SHALL BE CENTERED ON THE FRONT AWNING, AND THE SIDE GOOSENECKS SHALL BE INSTALLED ACCORDING TO THE FRONT ELEVATION.
 - CONTRACTOR SHALL INSTALL THE PENDANT LIGHTS AT THE SELF SERVICE STATION AFTER ALL THE EQUIPMENT HAS BEEN INSTALLED AND SIGNAGE TO BE OPERATIONAL.
 - ROUTE CIRCUIT THROUGH INTERIOR LIGHTING CONTACTOR ILC. REFER TO INTERIOR LIGHTING CONTROL DIAGRAM ILC FOR ADDITIONAL INFORMATION.

- GENERAL NOTES:**
- VERIFY THE EXACT LOCATION OF SIGNS, AND FASCIA BOXES BEFORE INSTALLATION OF JUNCTION BOXES.
 - HOMERUNS MAY BE COMBINED AS ALLOWED BY THE NATIONAL ELECT. CODE ALL CONDUIT SHALL BE SIZED PER THE 2017 NEC.
 - ELECTRICAL CONTRACTOR SHALL VERIFY EXACT SIGN(S) WIRING REQUIREMENTS WITH THE SIGN SUPPLIER PRIOR TO SUBMITTING A BID FOR THE ELECTRICAL.
 - THE BUILDING SIGNAGE, FASCIA LIGHTING, BUILDING SIGN LIGHTING, DRIVE-THRU MENUBOARD(S) SHALL BE WIRED THRU THE LIGHTING CONTACTORS FOR AUTOMATIC & MANUAL CONTROL.

NOTE:
REFER TO ARCHITECTURAL REFLECTED CEILING PLAN, EXTERIOR ELEVATIONS AND WALL SECTIONS FOR DIMENSIONED LOCATIONS OF LIGHTING FIXTURES.

NOTE:
CRABPOT LIGHTS AT "H" COUNTER TO BE MOUNTED 84" ABOVE FINISH FLOOR. PENDANT AND CRABPOT LIGHTS AT TABLES TO BE MOUNTED 66" ABOVE FINISH FLOOR.

LIGHT FIXTURE SCHEDULE

| MARK | DESCRIPTION | MANUFACTURER | LIGHT FIXTURE | COLOR | LAMPS/NOTES |
|------|---|--------------|------------------------|------------------|-----------------------------------|
| A | 2 x 4 LED LAY-IN | HERMITAGE | 20800844 | WHITE | 52 WATTS |
| B | 2 x 2 LED LAY-IN | HERMITAGE | - | WHITE | - |
| CL | COOLER/FREEZER | BY OTHERS | BY COOLER MANUFACTURER | | |
| E | MANSARD WALL MOUNT UNIT | HERMITAGE | 09700809 | CLEAR | (1) 26W |
| ER | REMOTE EMERGENCY LIGHTING UNIT (NOTE 6) | EXITRONIX | 90901052 | WHITE | (1) 5W |
| EX | LED EXIT EMERGENCY COMBO (NOTE 6) | EXITRONIX | 90902167 | WHITE | INCLUDED |
| L-1 | REFER TO VISUAL LIGHTING SCHEDULE | | | | |
| L-2 | REFER TO VISUAL LIGHTING SCHEDULE | | | | |
| L-3 | REFER TO VISUAL LIGHTING SCHEDULE | | | | |
| LL-3 | PENDANT / LED LAMP | HERMITAGE | FLAVORIETY | BLUE, AMBER, RED | (7) 9.8 WATTS OMNI-DIRECTIONAL |
| L-4 | REFER TO VISUAL LIGHTING SCHEDULE | | | | |
| L-5 | REFER TO VISUAL LIGHTING SCHEDULE | | | | |
| L-6 | REFER TO VISUAL LIGHTING SCHEDULE | | | | |
| L-7 | REFER TO ARCHITECTURAL DRAWINGS | | | | 2" DOWNLIGHTS |
| LX-1 | REFER TO VISUAL LIGHTING SCHEDULE | | | | |
| LX-2 | REFER TO VISUAL LIGHTING SCHEDULE | | | | |
| WP | WALL PACK w/ PHOTO CELL (REAR DOOR) | SECURITY | SMP-100MH-DB-MT | BRONZE | (1) MH100/U/MED |

SITE LIGHTING (VERIFY COUNTS AND TYPE WITH SITE PLAN)

| MARK | DESCRIPTION | MANUFACTURER | LIGHT FIXTURE | CORRELATED COLOR TEMPERATURE | COLOR | BULBS |
|------|-----------------------|--------------|---------------|------------------------------|-------------|-----------|
| 4M-1 | 166W LED SITE HEAD | CREE | 72008214 | 3000K | DARK BRONZE | 166 WATTS |
| 4M-1 | 25" SQUARE STEEL POLE | CREE | 72004957 | | DARK BRONZE | N/A |

SITE LIGHTING - DARK SKY APPROVED (WHERE REQUIRED)

| MARK | DESCRIPTION | MANUFACTURER | LIGHT FIXTURE | CORRELATED COLOR TEMPERATURE | COLOR | BULBS |
|-------|--------------------------------------|--------------|---------------|------------------------------|-------------|-----------|
| LP-DS | 166W LED SITE HEAD | CREE | 72009452 | 3000K | DARK BRONZE | 166 WATTS |
| H-DS | LED GOOSENECKS - OUTDOOR | HERMITAGE | 93102318 | 3K | CUSTOM | 38 WATTS |
| D1 | LED SHUTTER UPLIGHT / PAINT IN FIELD | CREE | 72010590 | 3000K | EVERGREEN | 25 WATTS |

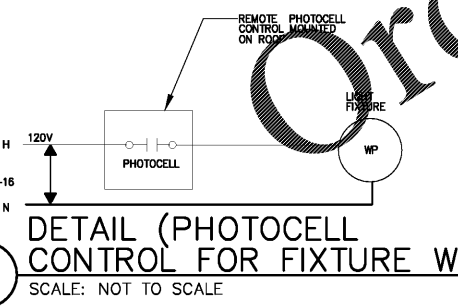
- NOTE:**
- VERIFY WIND LOAD TO ENSURE POLE SIZE IS SUFFICIENT.
 - LABOR WARRANTY FOR TWO YEARS AND AN OVERALL TEN YEAR WARRANTY IS PROVIDED ON ALL PARKING LOT LIGHTING THROUGH HERMITAGE LIGHTING NATIONAL ACCOUNTS.
 - PLEASE CONTACT HERMITAGE LIGHTING FOR INFORMATION ON THE APPROVED LIGHTING PACKAGE, AND PRICING TEL. (800) 264-3383
 - NO SUBSTITUTION ALLOWED FOR SPECIFIED LIGHT FIXTURES.
 - ONLY APPROVED VENDORS ARE ALLOWED TO BE USED FOR PURCHASING POPEYES LOUISIANA KITCHEN BRAND PRODUCTS.
 - FIXTURE TO PROVIDE MINIMUM 90 MINUTE BATTERY BACK-UP.
- ALL LIGHT FIXTURES LISTED IN THE ABOVE SCHEDULE SHALL BE FURNISHED AND INSTALLED BY THE ELECTRICAL CONTRACTOR, EXCEPT AS NOTED IN PARAGRAPH, PART 1.1.C OF ELECTRICAL SPECIFICATIONS.

- FIXTURE NOTES:**
- SEE ARCHITECTURAL DETAILS FOR MOUNTING LOCATIONS.
 - ALL OUTLETS FOR LIGHTS SHALL BE SUPPORTED INDEPENDENTLY OF CEILING SYSTEM USING 1/4" ALL THREAD ROD.
 - PROVIDE REMOTE MOUNTED (ON ROOF) PHOTO CELL FOR ALL EXTERIOR FIXTURE, TYPE "WP" NOT ON THE LIGHTING CONTACTOR.
 - BALLAST LOCATION FOR GOOSE NECKS INSTALLED PER N.E.C.

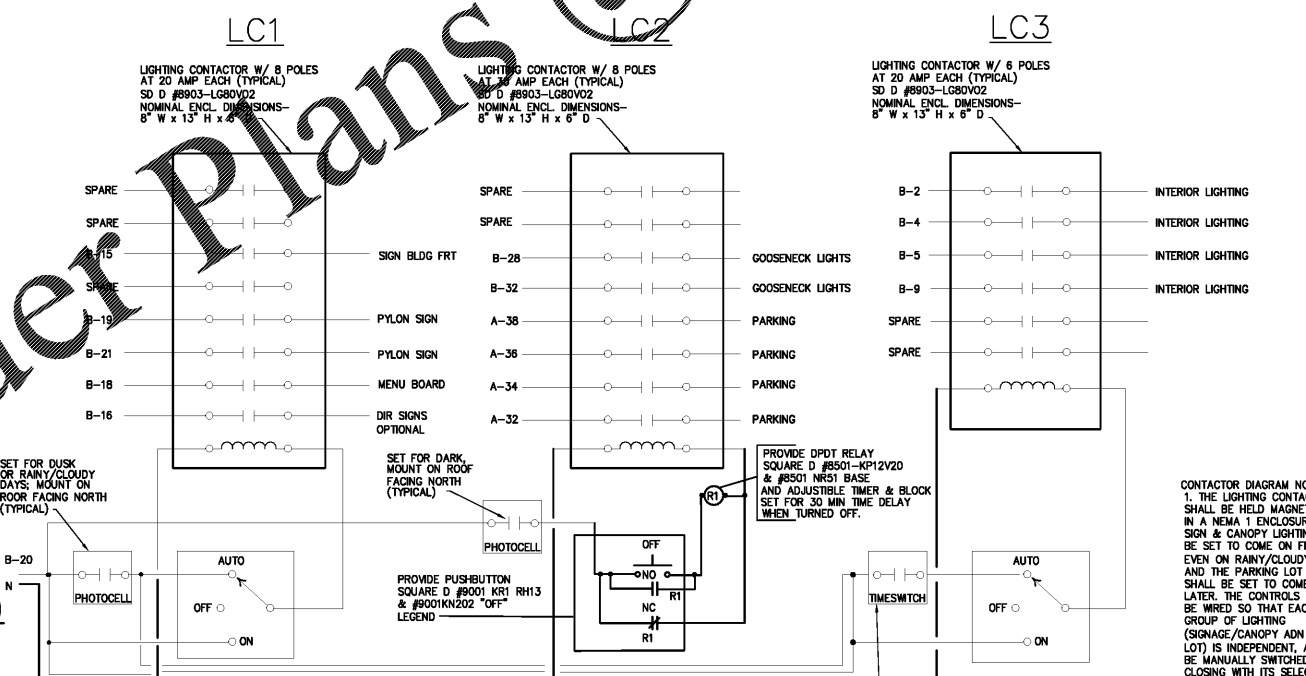
POPEYES RADIO SYSTEM

| DESCRIPTION | MAKE | MODEL | QUANTITY |
|--|----------------|------------------|----------|
| RECESSED SPEAKERS* (DINING) | BOSE | MODEL #16, BLACK | 4 |
| RECESSED SPEAKERS* (KITCHEN) | MUZAK | MBS 8-ST3, BLACK | 2 |
| OUTDOOR BOX SPEAKERS* | OM | 701 | 4 |
| AMPLIFIER | PASO | MU 3130 BGM | 1 |
| SPEAKER SUPPORT | QUAM | SSS-2 | 2 |
| SPEAKER BACKCAN | QUAM | ERD-B | 2 |
| CABLE, CONNECTORS, HARDWARE AND SHELFS | VARIOUS | VARIOUS | 1 |
| AREA VOLUME CONTROL | QUAM | QC-10 | 3 |
| RECEIVER | ECHO STAR | 3000 | 1 |
| DISH | CHANNEL MASTER | 1.0 ANTENNA | 1 |

* NUMBER OF SPEAKERS MAY VARY DUE TO DESIGN CONSIDERATIONS
* LABOR INCLUDES INSTALLATION OF 150' OF 12 GAUGE SPEAKER WIRE.
SEE THE NATIONAL ACCOUNT VENDOR LIST FOR THE CONTACT INFORMATION FOR RETAIL RADIO.



1 LIGHTING REFLECTED CEILING PLAN
SCALE: 1/4" = 1'-0"



3 LIGHTING CONTACTOR DIAGRAM
SCALE: NOT TO SCALE

progressive
PROGRESSIVE ARCHITECTURE ENGINEERING, P.C.
330 South Tryon St Suite 500 | Charlotte, NC 28202 | 704.731.8880 | www.progressiveae.com

LOUISIANA ARCHITECT

POPEYES

LEBLON FRANCHISING HOLDINGS, L.L.C.
POPEYE'S LOUISIANA KITCHEN
921 CONCORD PARKWAY SOUTH
CONCORD, NC, 28027

FOR CONSTRUCTION

ISSUANCE PERMIT SUBMITTAL 08/14/2020

REVISIONS

| NO. | DATE | DESCRIPTION |
|-----|------|-------------|
| 1 | | |

FILE NUMBER 86560010
PROJECT MANAGER RM
PROFESSIONAL MPA
DRAWN BY TLW
CHECKED BY RM

ELECTRICAL LIGHTING FLOOR PLAN

E4