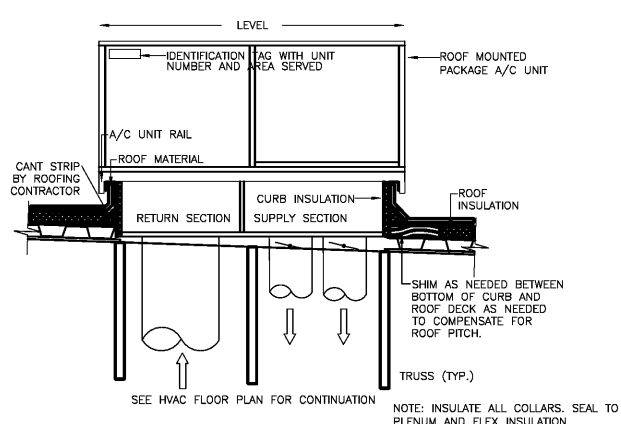
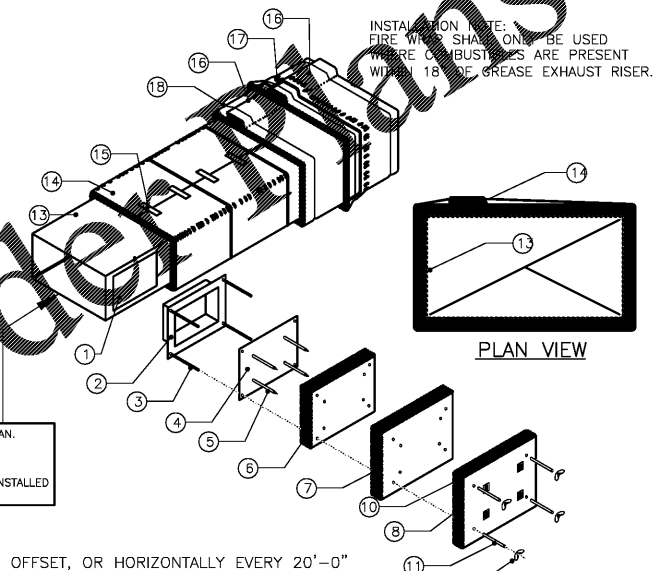


- NOTES:
- BANDING MATERIAL, 3/4" WIDE, MINIMUM 0.015" THICK, CARBON STEEL FOR CONSTRUCTION REQUIREMENTS OF ZERO CLEARANCE TO COMBUSTIBLES OR 1 HR. RATINGS. STAINLESS STEEL BANDING IS USED FOR 2 HR. REQUIREMENTS.
 - 3M FIRE BARRIER DUCT WRAP 615+, 1-1/2" THICK, 24" OR 48" WIDE, 300' STANDARD LENGTH (2 LAYERS) 6 LBS PER CU FT TO BE UTILIZED.
 - HOLD INTERIOR WRAP OF INSULATION USING 1" WIDE FILAMENT TAPE (NO. 898) MANUFACTURED BY 3M COMPANY.
 - SEAL CUT EDGES OF BLANKET WITH ALUMINUM FOIL TAPE.

LEGEND

1	DOOR HOLE
2	ACCESS FRAME WELDED TO DUCT
3	1/4" DIA. ALL THREAD RODS
4	ACCESS COVER, 16 GA.
5	INSULATION PINS, WELDED
6	1 3M FIRE BARRIER 615 PLUS
7	1 3M FIRE BARRIER 615 PLUS 1" OVERLAP
8	1 3M FIRE BARRIER 615 PLUS 1" OVERLAP
9	SPEED CLIPS
10	ALUMINUM TAPE EDGES
11	SPOOL PIECES FOR THREADED RODS
12	1/4" DIA. WING NUTS
13	16 GA. SHEET METAL DUCT (FULLY WELDED WATER TIGHT)
14	1ST LAYER 3M FIRE BARRIER DUCT WRAP 615 PLUS LONGITUDINAL JOINT BUTT OR MIN. 3" OVERLAP ON INNER LAYER, MIN. 3" OVERLAP ON OUTER LAYER
15	3/4" (19mm) WIDE FILAMENT TAPE
16	2ND LAYER 3M FIRE BARRIER DUCT WRAP 615 PLUS OR APPROVED EQUIVALENT
17	3" MINIMUM PERIMETER OVERLAP - TYP.
18	STEEL BANDING 1/2" WIDE MIN. TYP. FOR PERMANENT FASTENING



1 HR. FIRE WRAP ("0" CLEARANCE) TO COMBUSTIBLES - INSTALLATION DETAIL
NOT TO SCALE

ARCHITECTURE ENGINEERING, P.C. SHALL RETAIN ALL COMMON LAW, STATUTORY AND OTHER RESERVED RIGHTS, INCLUDING THE COPYRIGHT THEREIN. SHALL RETAIN ALL COMMON LAW, STATUTORY AND OTHER RESERVED RIGHTS, INCLUDING THE COPYRIGHT THEREIN.

www.LDOnline.com
 PROGRESSIVE ARCHITECTURE ENGINEERING, P.C.
 330 South Tryon St Suite 500 | Charlotte, NC 28202 | 704.731.8080 | www.progressiveae.com
 LOUISIANA PROFESSIONAL SEAL 33848
 ENGINEER B. SCOTT COUNTY
 08-14-2020
 FOR CONSTRUCTION
 If this document is sealed and signed in a digital or electronic format and is received from someone other than the sealing professional identified in the document, you must contact the sealing professional in writing to validate authenticity of the document. The sealing professional disclaims the seal and signature and shall not be liable for any liability associated with it where the authenticity of any digital or electronic seal or signature has not been validated in this manner.
 ISSUANCE PERMIT SUBMITTAL 08/14/2020
 NO. DATE DESCRIPTION
 FILE NUMBER 86560010
 PROJECT MANAGER BSC
 PROFESSIONAL BSC
 DRAWN BY JSC
 CHECKED BY BSC
 HVAC ROOF PLAN AND DETAILS
 M2