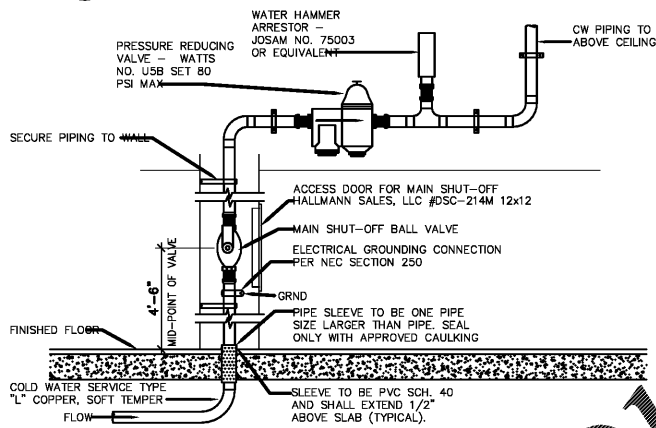
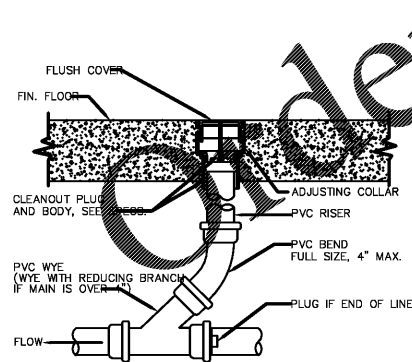


- DETAIL NOTES:**
1. SURFACE MOUNTED THERMOSTATIC MIXING VALVE ASSEMBLY TO BE SYMMONS SERIES 5 OR APPROVED EQUAL. 15 PSI MAXIMUM PRESSURE DROP. COORDINATE FINAL SELECTION WITH FLOW AND PRESSURE TESTS TO ENSURE PROPER OPERATION.
 2. SEE PLANS FOR HW SIZES FROM WATER HEATER SYSTEM TO MIXING VALVE ASSEMBLY. REDUCE AT ASSEMBLY AS REQUIRED.
 3. INSTALL PER MANUFACTURERS PUBLISHED RECOMMENDATIONS.

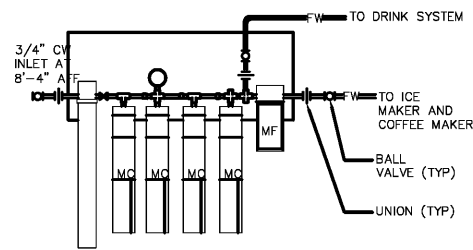
11 THERMOSTATIC MIXING VALVE
NTS



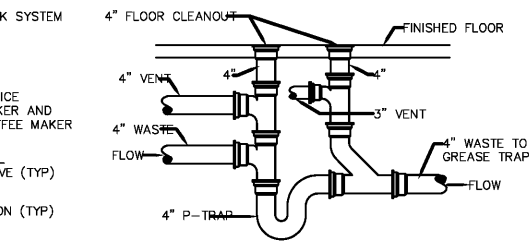
10 WATER SERVICE ENTRANCE DETAIL
NTS



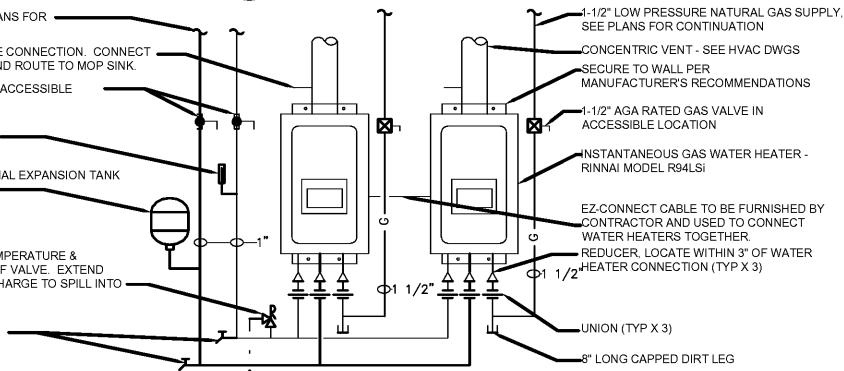
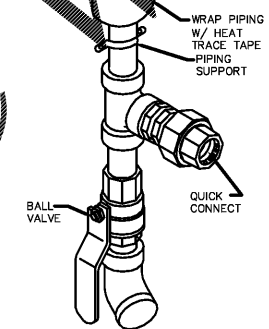
4 FLOOR CLEAN-OUT
NTS



10 WATER FILTER/SCHEMATIC HOOK-UP
NTS

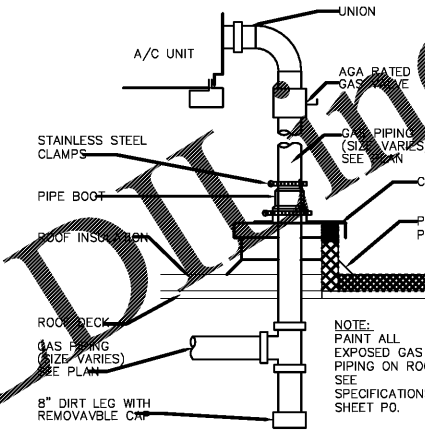


7 GREASE RECOVERY CONNECTION
NTS

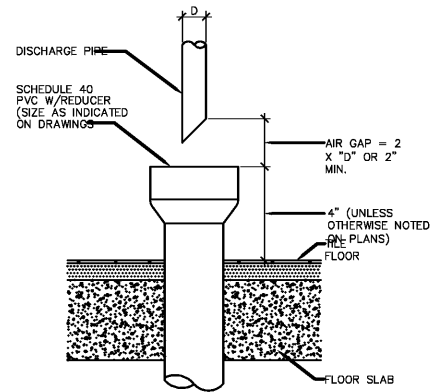


3 GAS WATER HEATER DETAIL
NTS

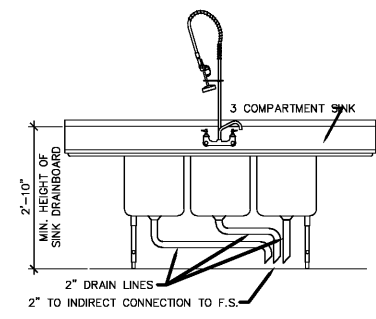
ENGINEER OF RECORD SHALL VERIFY WITH LOCAL HEALTH DEPT THE REQUIRED TEMPERATURE RISE. VERIFY WH-1 IS CAPABLE OF 140° F DISCHARGE. VERIFY APPLICABLE WATER HEATER DETAIL NO. 9.



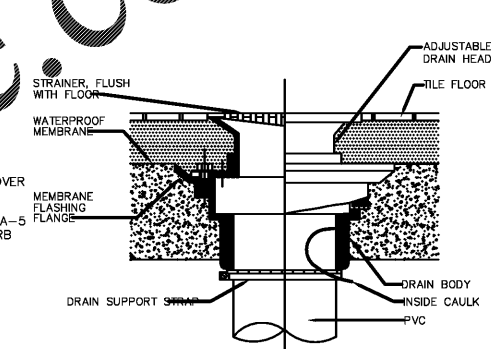
9 GAS @ A/C UNIT DETAIL
NTS



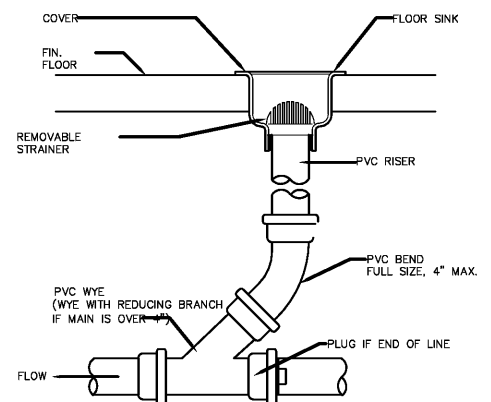
6 HUB DRAIN DETAIL
NTS



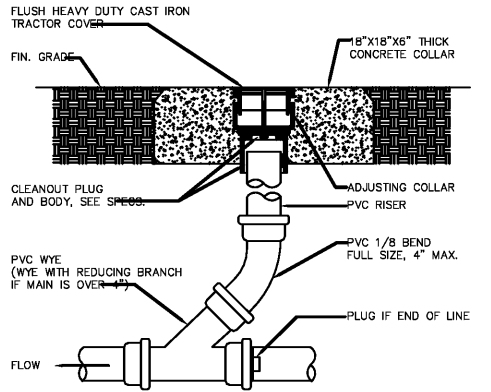
2 3 COMPARTMENT SINK
NTS



8 FLOOR DRAIN DETAIL
NTS



5 FLOOR SINK
NTS

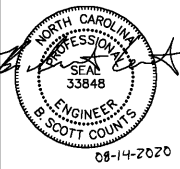


1 GRADE CLEAN-OUT
NTS



Popeye's

LEBLON FRANCHISING HOLDINGS, LLC.
POPEYE'S
LOUISIANA KITCHEN
921 CONCORD PARKWAY SOUTH,
CONCORD, NC, 28027



FOR CONSTRUCTION

If this document is sealed and signed in a digital or electronic format and is received from someone other than the sealing professional identified in the document, you must contact the sealing professional in writing to validate authenticity of the document. The sealing professional disclaims the seal and signature and shall not be liable for any liability associated with it where the authenticity of any digital or electronic seal or signature has not been validated in this manner.

ISSUANCE
PERMIT SUBMITTAL 08/14/2020

REVISIONS
NO. DATE DESCRIPTION

FILE NUMBER 86560010
PROJECT MANAGER BSC
PROFESSIONAL BSC
DRAWN BY JSC
CHECKED BY BSC

PLUMBING DETAILS