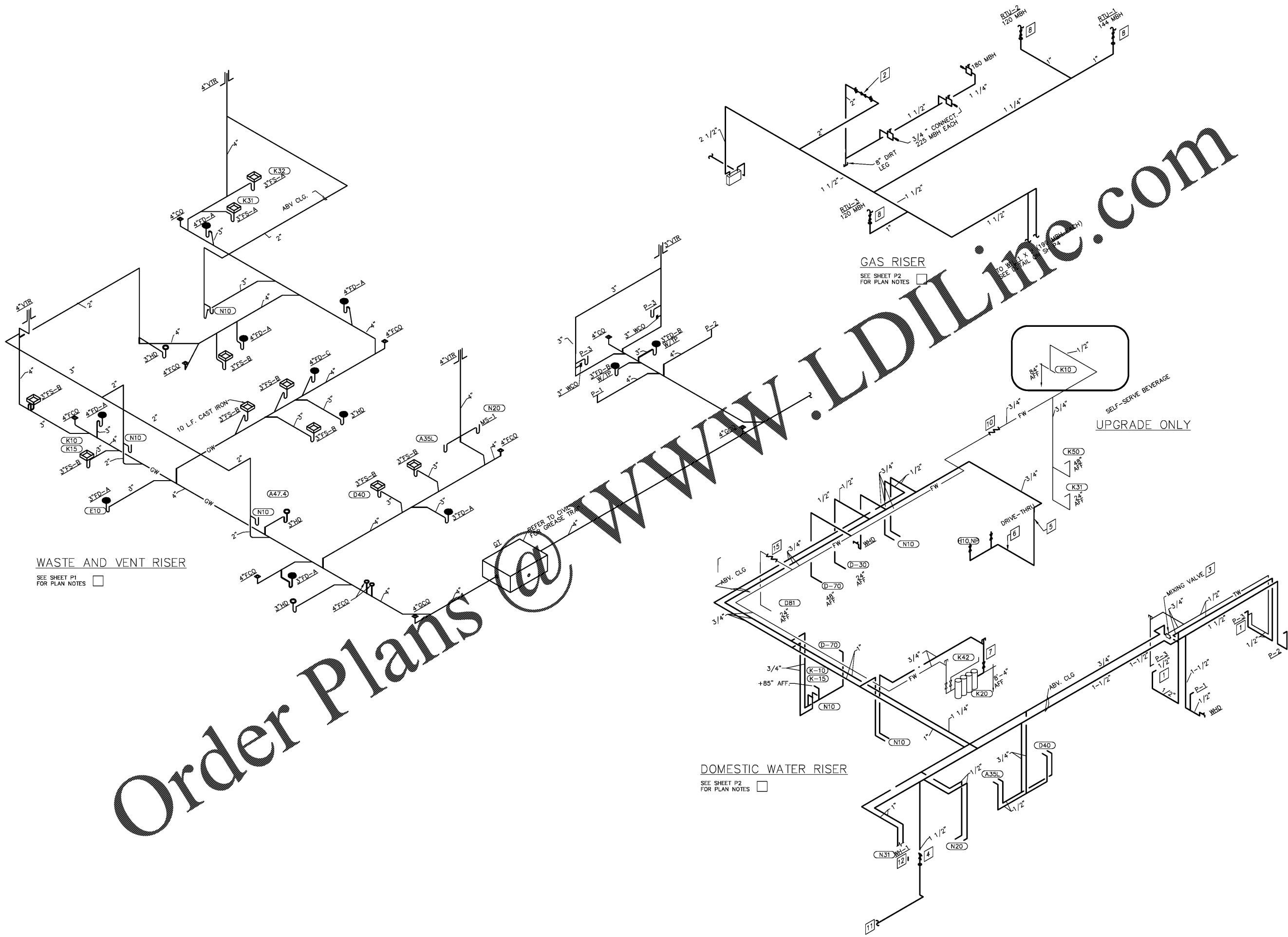


ARCHITECTURE ENGINEERING, P.C. SHALL RETAIN ALL COMMON LAW, STATUTORY AND OTHER RESERVED RIGHTS, INCLUDING THE COPYRIGHT THEREIN. PROGRESSIVE ARCHITECTURE ENGINEERING, P.C. SHALL RETAIN ALL COMMON LAW, STATUTORY AND OTHER RESERVED RIGHTS, INCLUDING THE COPYRIGHT THEREIN.



**WASTE AND VENT RISER**  
SEE SHEET P1 FOR PLAN NOTES

**GAS RISER**  
SEE SHEET P2 FOR PLAN NOTES

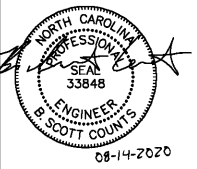
**DOMESTIC WATER RISER**  
SEE SHEET P2 FOR PLAN NOTES

Order Plans @ WWW.LDILINE.COM



**POPEYES**

LEBLON FRANCHISING HOLDINGS, L.L.C.  
**POPEYE'S**  
LOUISIANA KITCHEN  
921 CONCORD PARKWAY SOUTH  
CONCORD, NC, 28027



**FOR CONSTRUCTION**

If this document is sealed and signed in a digital or electronic format and is received from someone other than the sealing professional identified in the document, you must contact the sealing professional in writing to validate the authenticity of the document. The sealing professional disclaims the seal and signature and shall not be liable for any liability associated with it where the authenticity of any digital or electronic seal or signature has not been validated in this manner.

**ISSUANCE**  
PERMIT SUBMITTAL 08/14/2020

**REVISIONS**  
NO. DATE DESCRIPTION

FILE NUMBER 86560010  
PROJECT MANAGER BSC  
PROFESSIONAL BSC  
DRAWN BY JSC  
CHECKED BY BSC

RISER DIAGRAM

**P3**

**progressive** | ae  
PROGRESSIVE ARCHITECTURE ENGINEERING, P.C.  
330 South Tryon St Suite 500 | Charlotte, NC 28202 | 704.731.8880 | www.progressiveae.com