

# SPECIFICATIONS

## DIVISION 6: WOOD

### SECTION 6B: FINISH CARPENTRY

#### GENERAL PROVISIONS

1. SCOPE: FURNISH AND INSTALL EXPOSED WOOD TRIM, MILLWORK, CASEWORK, WOOD CABINETS, PLASTIC LAMINATES, AND WOOD SHELVING

#### NOTES

A. MOISTURE CONTENT: FINISH WOODWORK MATERIALS SHALL BE KILN DRIED TO THE FOLLOWING MOISTURE CONTENT UNLESS OTHERWISE RECOMMENDED IN THE APPLICABLE "QUALITY STANDARDS" FOR REGIONAL CLIMATE CONDITIONS.

INTERIOR WOODWORK - 6% TO 11%  
EXTERIOR WOODWORK - 9% TO 12%

B. FIELD MEASUREMENTS: ALL DIMENSIONS AFFECTING PREFABRICATED MILLWORK AND CASEWORK ITEMS SHALL BE FIELD VERIFIED PRIOR TO FABRICATION.

C. CONDITIONS: PROVIDE PROPER TEMPERATURE AND HUMIDITY REQUIREMENTS FOR WOODWORK INSTALLATION AREAS. INSTALL WOODWORK AFTER THE REQUIRED TEMPERATURE AND RELATIVE HUMIDITY HAVE BEEN STABILIZED IN INSTALLATION AREAS. MAINTAIN TEMPERATURE AND HUMIDITY CONDITIONS UNTIL ACCEPTANCE OF THE WORK BY THE OWNER.

3. QUALITY CONTROL: WOODWORK SHALL COMPLY WITH ARCHITECTURAL WOOD WORK INSTITUTE (AWI) "QUALITY STANDARDS" EXCEPT WHERE OTHERWISE NOTED.

4. SUBMISSIONS: SUBMIT FOUR (4) COPIES OF SHOP DRAWINGS OF ALL CABINETWORK AND MILLWORK ITEMS TO OWNER.

#### MATERIALS

1. WOOD TRIM: PROVIDE BIRCH AS INDICATED ON THE FINISH SCHEDULE IN AWI CUSTOM GRADE 1 PLAIN SAUN WOOD. FABRICATE WOOD TRIM TO DIMENSIONS, PROFILE AND DETAILS SHOWN. ROUTE OR GROOVE REVERSE SIDE OF TRIM MEMBERS WIDER THAN 4" TO BE APPLIED TO FLAT SURFACES EXCEPT FOR MEMBERS WITH ENDS EXPOSED IN THE FINISHED WORK. SECURE WITH FINISH NAILS STAGGERED AND COUNTER SINK WITH PUTTY TO MATCH WOOD COLOR. MITER OUTSIDE CORNER AND CONTINUOUS JOINTS. FINISH WITH ONE (1) COAT OF MINWAX PASTE WOOD FILLER AND TWO (2) COATS MINWAX POLYURETHANE FINISH LOW LUSTER.

2. WOOD PANELING: REFER TO FINISH SCHEDULE FOR MATERIAL SELECTION. INSTALLATION PER MANUFACTURER'S INSTRUCTIONS. FINISH WITH ONE (1) COAT OF MINWAX PASTE WOOD FILLER AND TWO (2) COATS MINWAX POLYURETHANE FINISH LOW LUSTER.

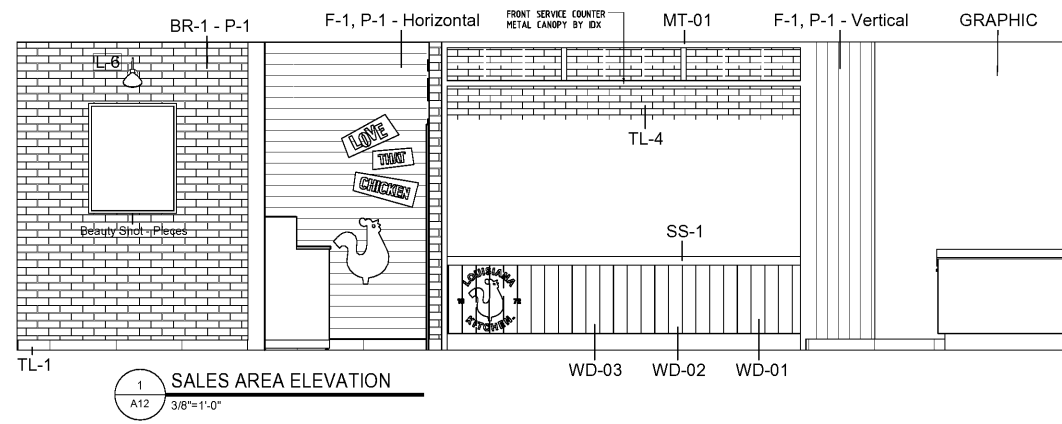
3. CABINETS, COUNTERTOPS, AND OTHER MILLWORK: COMPLY WITH AWI QUALITY STANDARDS FOR CUSTOM WORK.

A. PLYWOOD: EXPOSED PAINTED - MDO MEDIUM DENSITY OVERLAY CONCEALED - B-C PLYWOOD EXPOSED STAINED - 3/4" BIRCH VENEER PLYWOOD EDGE BAND EXPOSED PLYWOOD EDGES WITH CLEAR WOOD TRIM AND CONCEALED WITH FASTENERS.

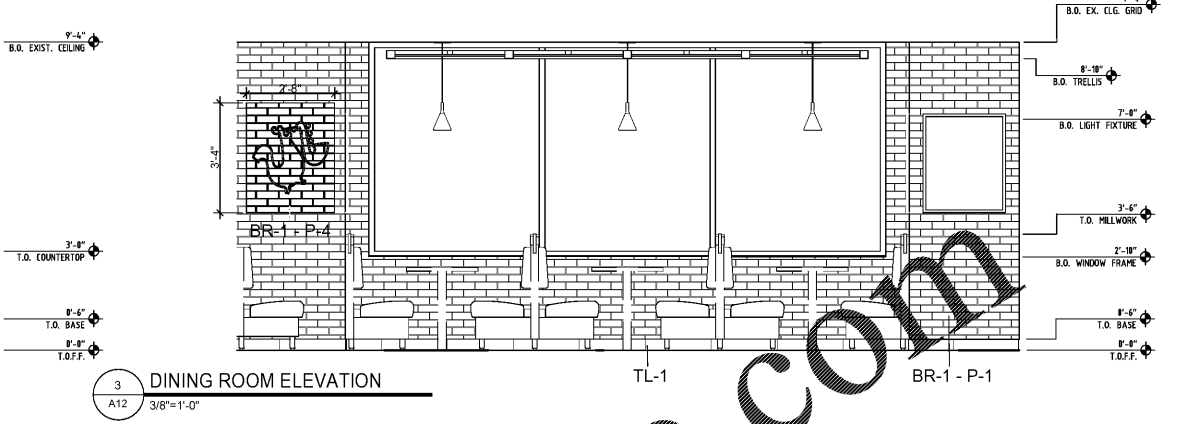
B. WOOD TRIM: FINISH WITH ONE (1) COAT OF MINWAX PASTE WOOD FILLER AND TWO (2) COATS MINWAX POLYURETHANE FINISH LOW LUSTER.

C. PLASTIC LAMINATE: PROVIDE PLASTIC LAMINATE OF THE MANUFACTURER, COLOR, TEXTURE, AND PATTERN AS SHOWN ON FINISH SCHEDULE.

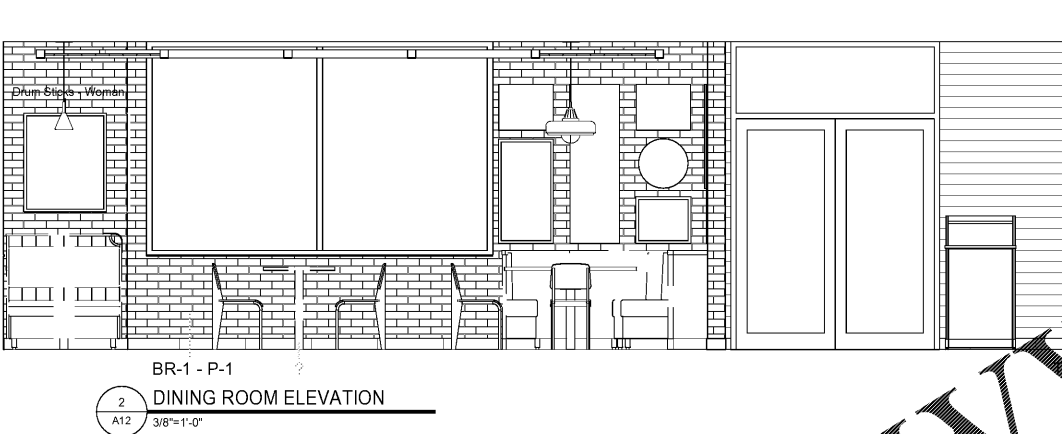
4. HARDWARE: ADJUSTABLE SHELF HARDWARE SHALL BE KNAPE AND VOGT, WALL MOUNTED SHELF STANDARDS WITH HEAVY DUTY BRACKETS AS SHOWN. FINISH ANOCHROME.



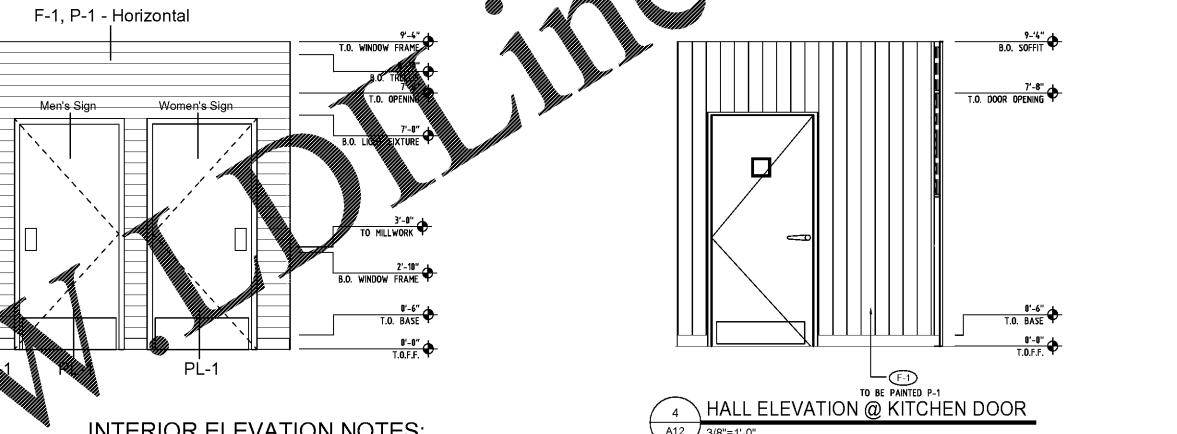
1 SALES AREA ELEVATION  
A12 3/8"=1'-0"



3 DINING ROOM ELEVATION  
A12 3/8"=1'-0"



2 DINING ROOM ELEVATION  
A12 3/8"=1'-0"



4 HALL ELEVATION @ KITCHEN DOOR  
A12 3/8"=1'-0"

#### INTERIOR ELEVATION NOTES:

- AT ALL OUTSIDE CORNER WALLS - PROVIDE WOOD CORNER GUARDS.
- FIELD VERIFY ALL DIMENSIONS PRIOR TO CONSTRUCTION

## DIGITAL MENU BOARD SPECIFICATIONS

**SICOM DIGITAL MENU BOARD EQUIPMENT SPECIFICATIONS**

Model	Dimensions
IS 3044P/PC 403 Display	28.46 cm (11.2")
Resolution	2560 x 1080
Brightness	450 cd/m²
External Control	R243C, R45, (R receive), Pixel Sensor, USB
Power Consumption Typical	6.6, 50 Watt
Measurements	1100.2 x 698.5 x 98.6 mm (43.4" x 27.5" x 3.9")

Model	Dimensions
IS 814P/PC/PC 813 Display	28.46 cm (11.2")
Resolution	1920 x 1080
Brightness	300 cd/m²
External Control	R243C, R45
Power Consumption Typical	11.09W (Max): 75W (PES)
Measurements	962.7 x 553.7 x 88 mm (37.9" x 21.8" x 3.5")

Model	Dimensions
PCMS 814P/PC/PC 813 Display	28.46 cm (11.2")
Resolution	1920 x 1080
Brightness	300 cd/m²
External Control	R243C, R45
Power Consumption Typical	11.09W (Max): 75W (PES)
Measurements	962.7 x 553.7 x 88 mm (37.9" x 21.8" x 3.5")

Model	Dimensions
PCMS 814P/PC/PC 813 Display	28.46 cm (11.2")
Resolution	1920 x 1080
Brightness	300 cd/m²
External Control	R243C, R45
Power Consumption Typical	11.09W (Max): 75W (PES)
Measurements	962.7 x 553.7 x 88 mm (37.9" x 21.8" x 3.5")

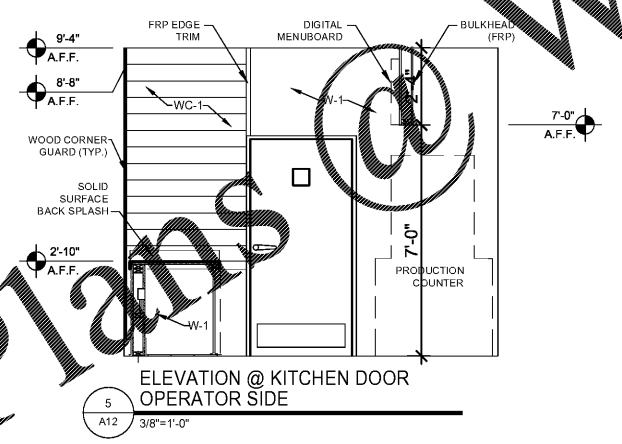
Model	Dimensions
PCMS 814P/PC/PC 813 Display	28.46 cm (11.2")
Resolution	1920 x 1080
Brightness	300 cd/m²
External Control	R243C, R45
Power Consumption Typical	11.09W (Max): 75W (PES)
Measurements	962.7 x 553.7 x 88 mm (37.9" x 21.8" x 3.5")

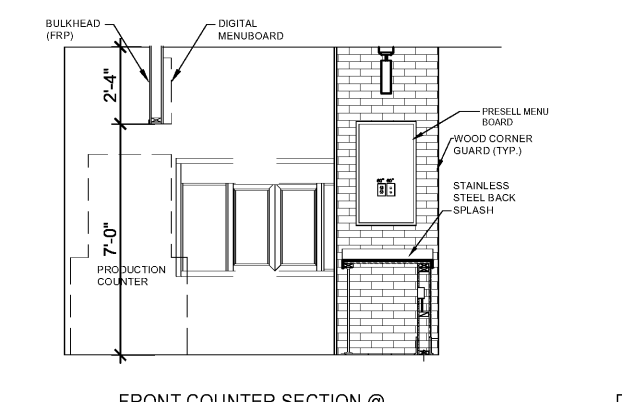
Model	Dimensions
PCMS 814P/PC/PC 813 Display	28.46 cm (11.2")
Resolution	1920 x 1080
Brightness	300 cd/m²
External Control	R243C, R45
Power Consumption Typical	11.09W (Max): 75W (PES)
Measurements	962.7 x 553.7 x 88 mm (37.9" x 21.8" x 3.5")

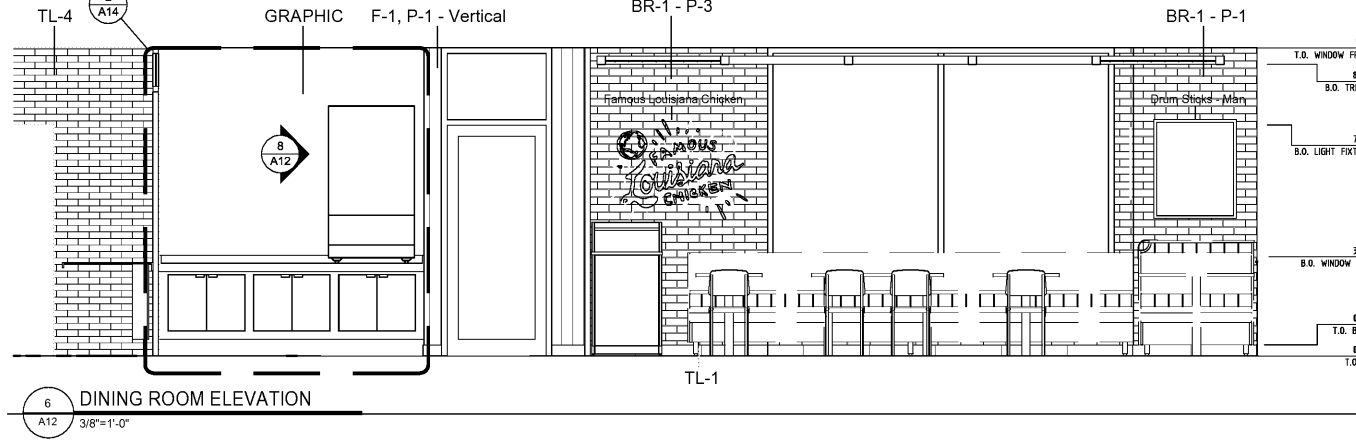
4434 Progress Meadow Drive, Doylestown, PA, 18902 | SICOM Systems Inc.



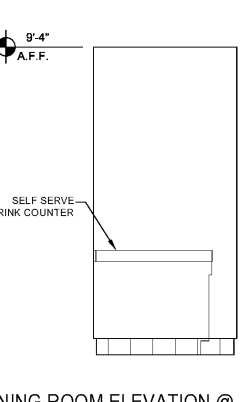
5 ELEVATION @ KITCHEN DOOR OPERATOR SIDE  
A12 3/8"=1'-0"



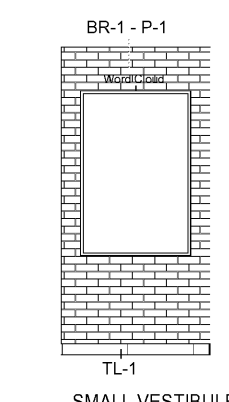
7 FRONT COUNTER SECTION @ PRESELL BOARD  
A12 3/8"=1'-0"



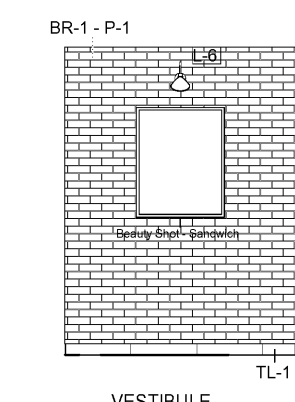
6 DINING ROOM ELEVATION  
A12 3/8"=1'-0"



8 DINING ROOM ELEVATION @ BEVERAGE COUNTER  
A12 3/8"=1'-0"




9 SMALL VESTIBULE ELEVATION  
A12 3/8"=1'-0"



10 VESTIBULE ELEVATION  
A12 3/8"=1'-0"

WALL IMAGE GRAPHICS & LOUISIANA KITCHEN RING  
A. MOSS RETAIL ENVIRONMENTS (FORMERLY ANDRES IMAGING & GRAPHICS, INC)  
CONTACT: DAN SCANDIFF; PHONE: (773) 435-7600; DJSCANDIFF@MOSSINC.COM  
B. APA COLOR GRAPHICS, INC.  
CONTACT: MIKE BARBIERI; PHONE: (800) 543-5775/(404) 355-1355; POPEYESORDERS@APACOLORGRAPHICS.COM  
WARRANTY CONTACT: MIKE BARBIERI MIKEB@APACOLORGRAPHICS.COM

  
**POPEYES**  
 LOUISIANA KITCHEN RING  
 921 CONCORD PARKWAY SOUTH  
 CONCORD, NC, 28027  
 www.progressiveae.com

**FOR CONSTRUCTION**  
 If this document is sealed and signed in a digital or electronic format and is received from someone other than the sealing professional identified in the document, you must contact the sealing professional in writing to validate authenticity of the document. The sealing professional disclaims the seal and signature and shall not be liable for any liability associated with it where the authenticity of any digital or electronic seal or signature has not been validated in this manner.

**ISSUANCE**  
 PERMIT SUBMITTAL 08/14/2020

**REVISIONS**  
 NO. DATE DESCRIPTION

FILE NUMBER 86560010  
 PROJECT MANAGER DRG  
 PROFESSIONAL JRD  
 DRAWN BY DRG  
 CHECKED BY DS

**DINING ROOM ELEVATIONS & DETAILS**  
**A12**