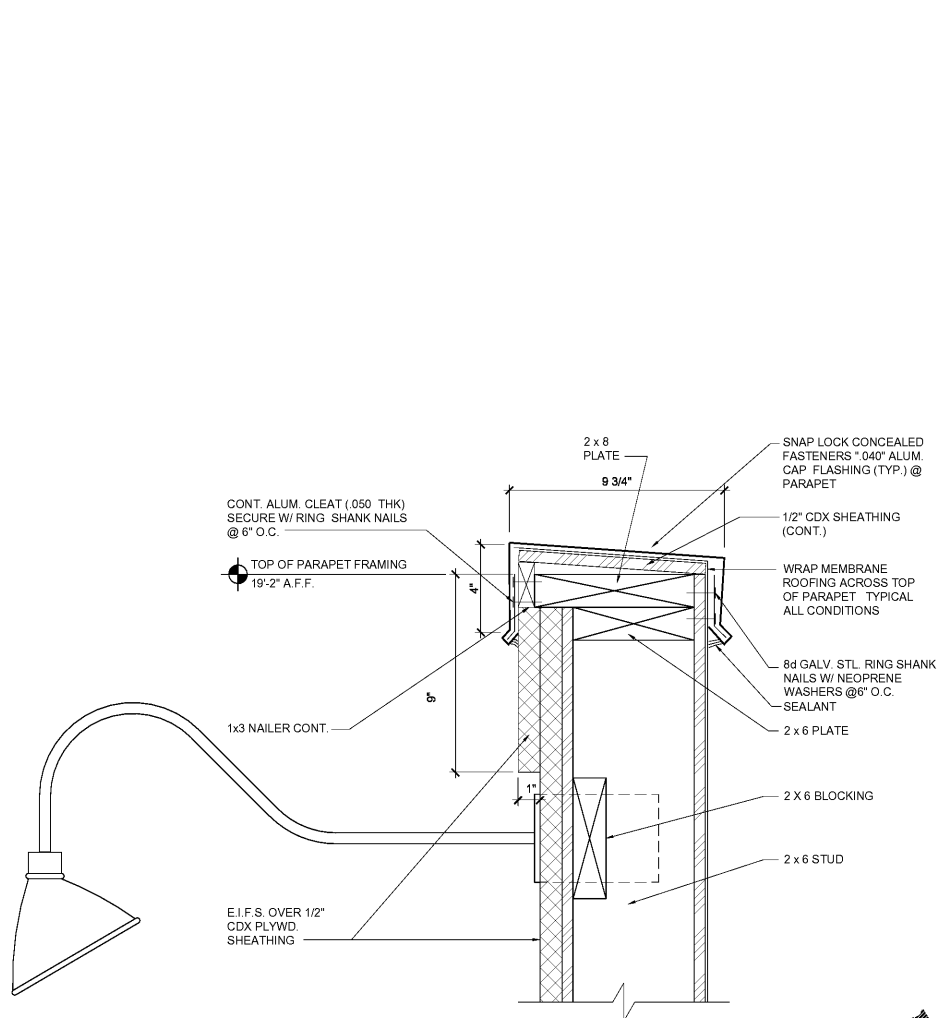
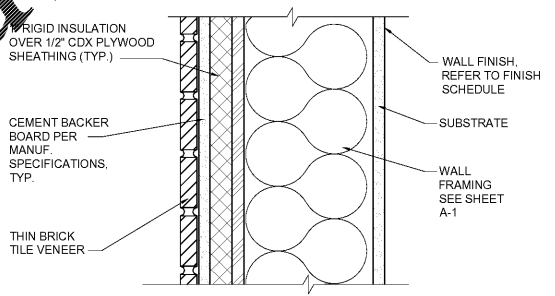


ARCHITECTURE ENGINEERING, P.C. SHALL RETAIN ALL COMMON LAW, STATUTORY AND OTHER RESERVED RIGHTS, INCLUDING THE COPYRIGHT THEREIN. PROGRESSIVE ARCHITECTURE ENGINEERING, P.C. SHALL RETAIN ALL COMMON LAW, STATUTORY AND OTHER RESERVED RIGHTS, INCLUDING THE COPYRIGHT THEREIN.

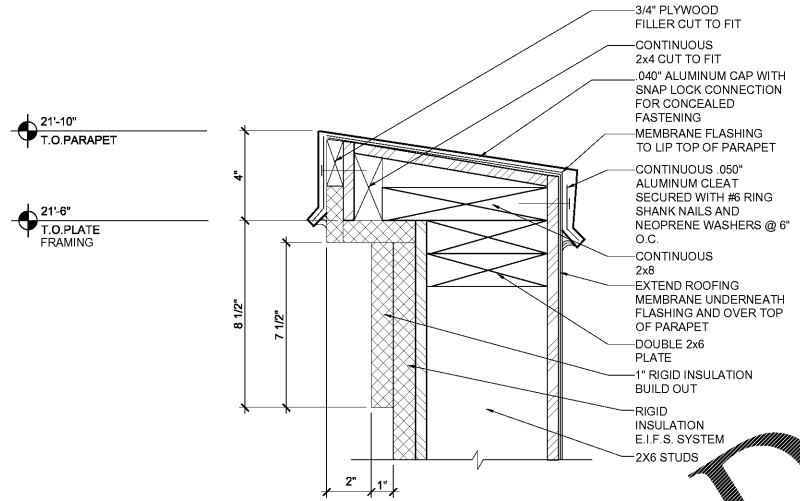


1 ENLARGED SECTION @ PARAPET
A10 3"=1'-0"

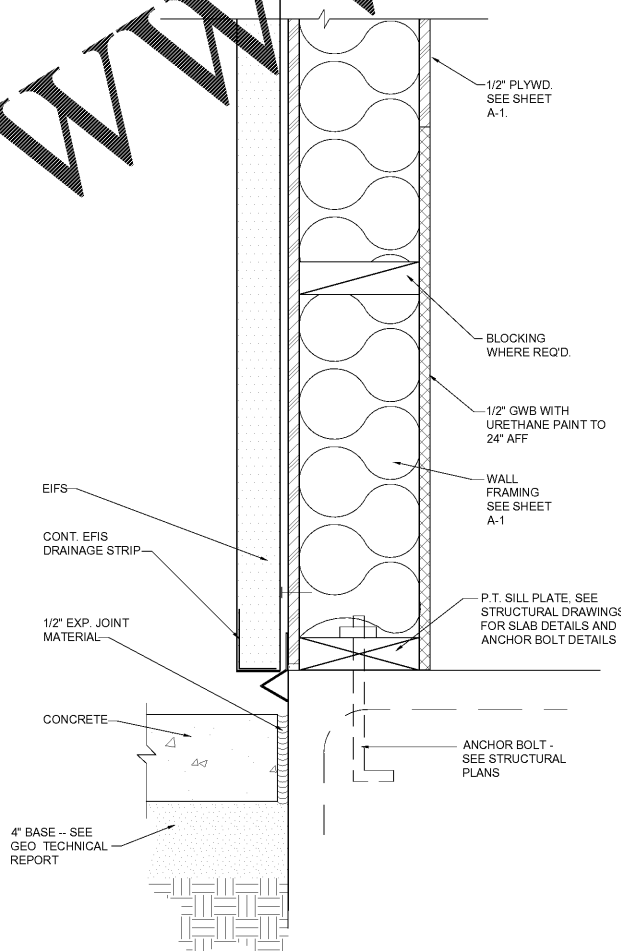
Order Plans @



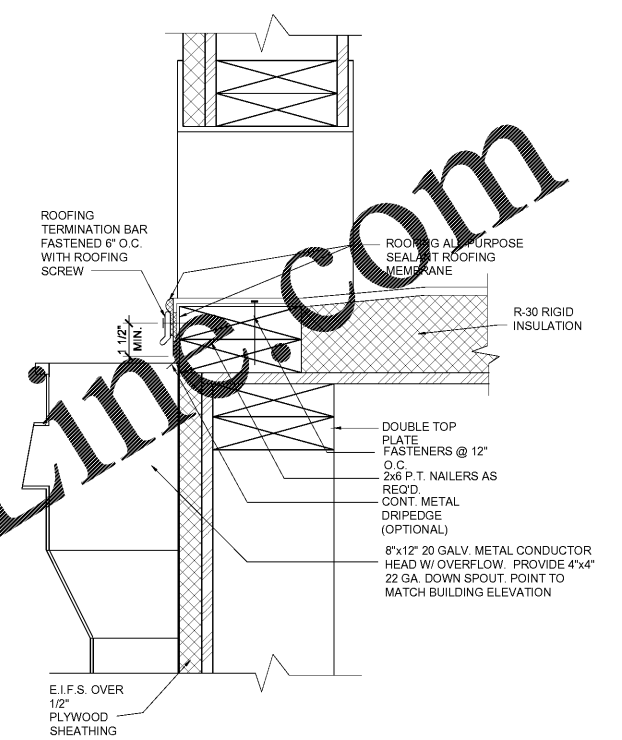
4 DETAIL @ THIN BRICK VENEER
A10 3"=1'-0"



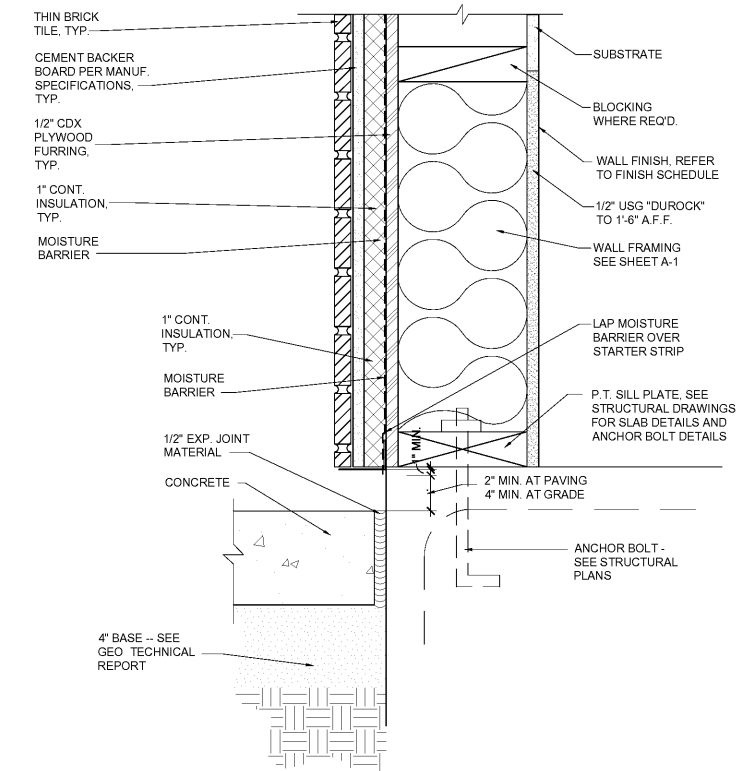
2 SECTION @ PARAPET
A10 3"=1'-0"



5 TYPICAL DETAIL AT BOTTOM OF WALL @ EIFS
A10 3"=1'-0"



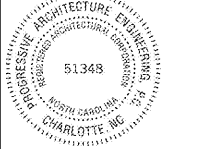
3 SCUPPER W/ OVERFLOW DETAIL
A10 3"=1'-0"



6 TYPICAL DETAIL AT BOTTOM OF WALL @ BRICK TILE VENEER
A10 3"=1'-0"



POPEYE'S
 LOUISIANA KITCHEN
 921 CONCORD PARKWAY SOUTH,
 CONCORD, NC, 28027



FOR CONSTRUCTION

If this document is sealed and signed in a digital or electronic format and is received from someone other than the sealing professional identified in the document, you must contact the sealing professional in writing to validate the authority of the document. The sealing professional disclaims the seal and signature and shall not be liable for any liability associated with it where the authority of any digital or electronic seal or signature has not been validated in this manner.

ISSUANCE
 PERMIT SUBMITTAL 08/14/2020

REVISIONS
 NO. DATE DESCRIPTION

FILE NUMBER 86560010
 PROJECT MANAGER DRG
 PROFESSIONAL JRD
 DRAWN BY DRG
 CHECKED BY DS