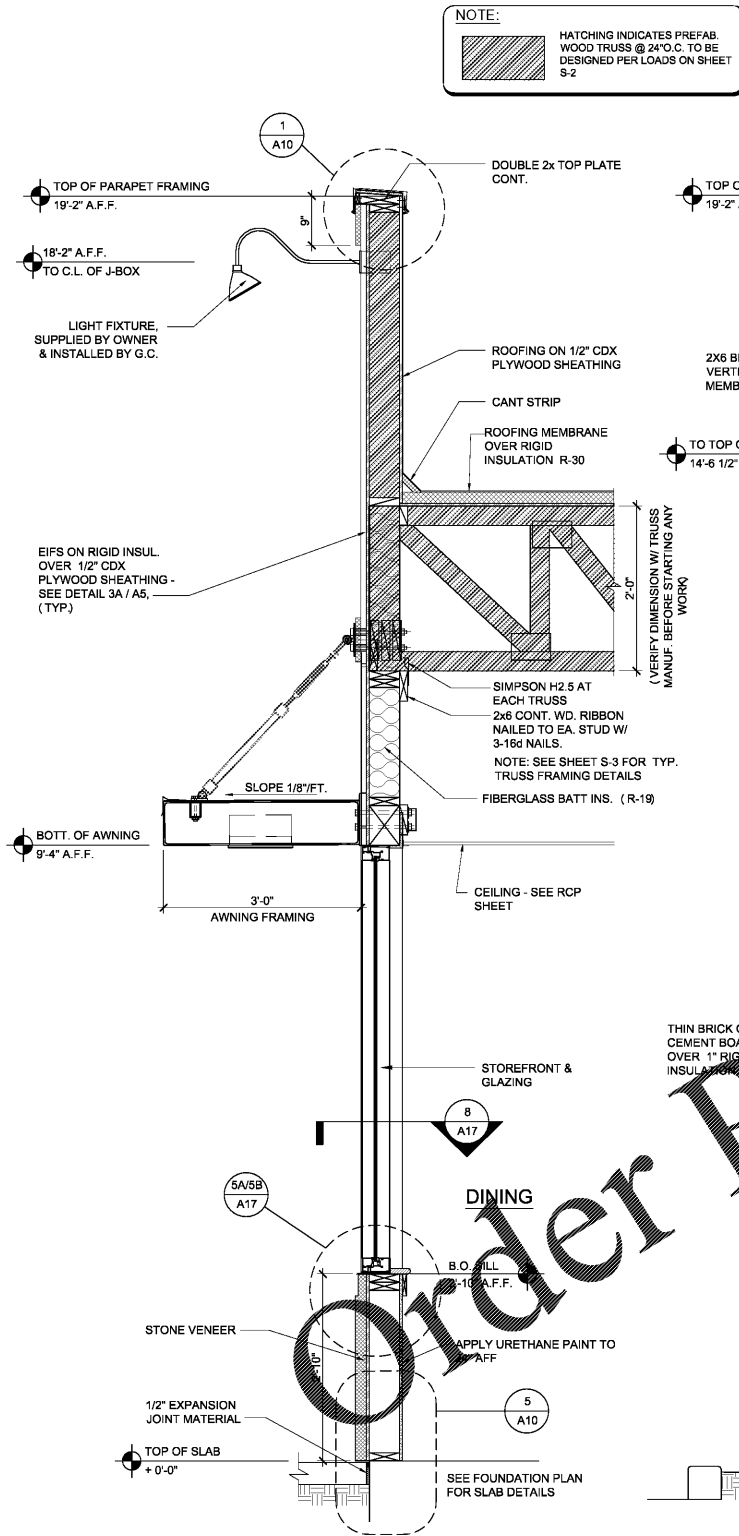
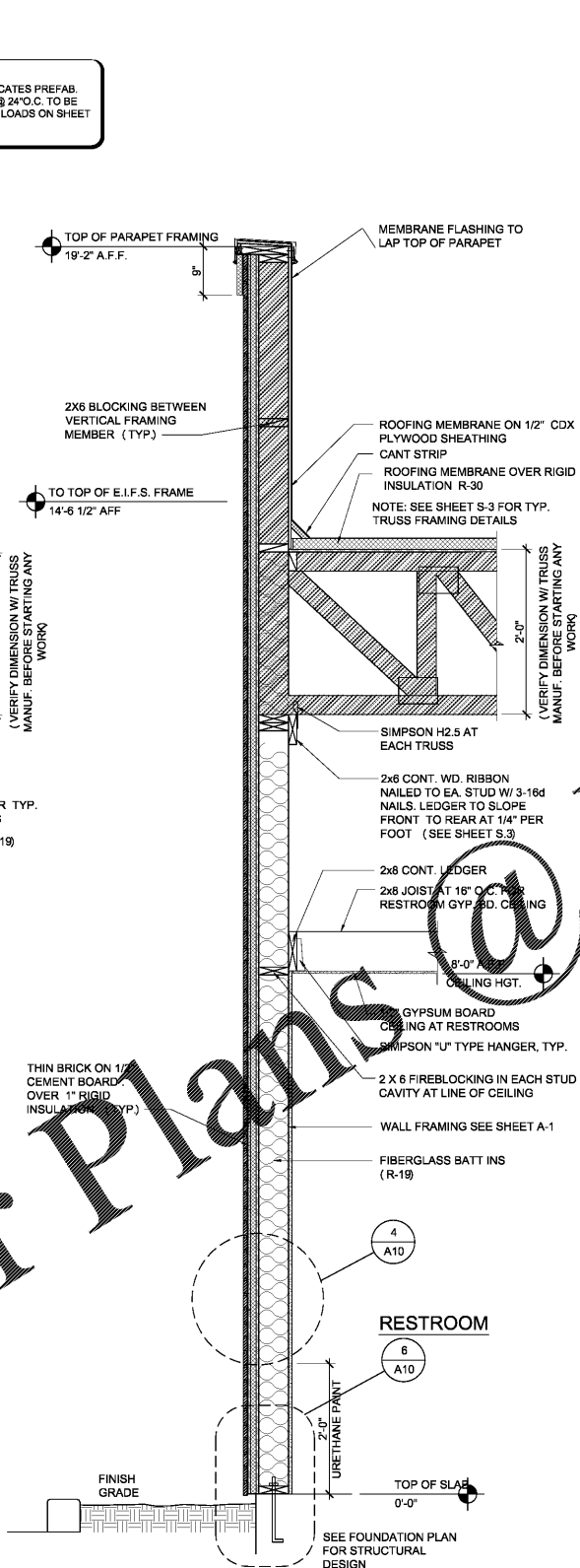


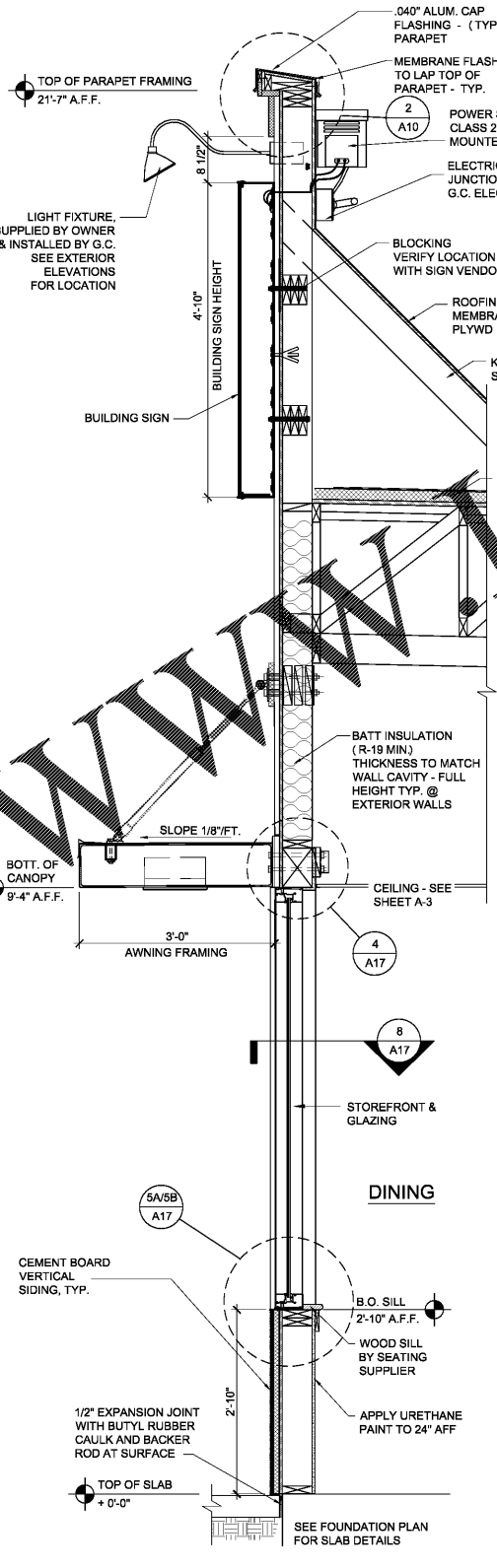
ARCHITECTURE ENGINEERING, P.C. SHALL RETAIN ALL COMMON LAW, STATUTORY AND OTHER RESERVED RIGHTS, INCLUDING THE COPYRIGHT THEREIN. OTHER ARCHITECTS, ENGINEERS, CONTRACTORS, SUPPLIERS, AND PROFESSIONALS SHALL RETAIN ALL COMMON LAW, STATUTORY AND OTHER RESERVED RIGHTS, INCLUDING THE COPYRIGHT THEREIN.



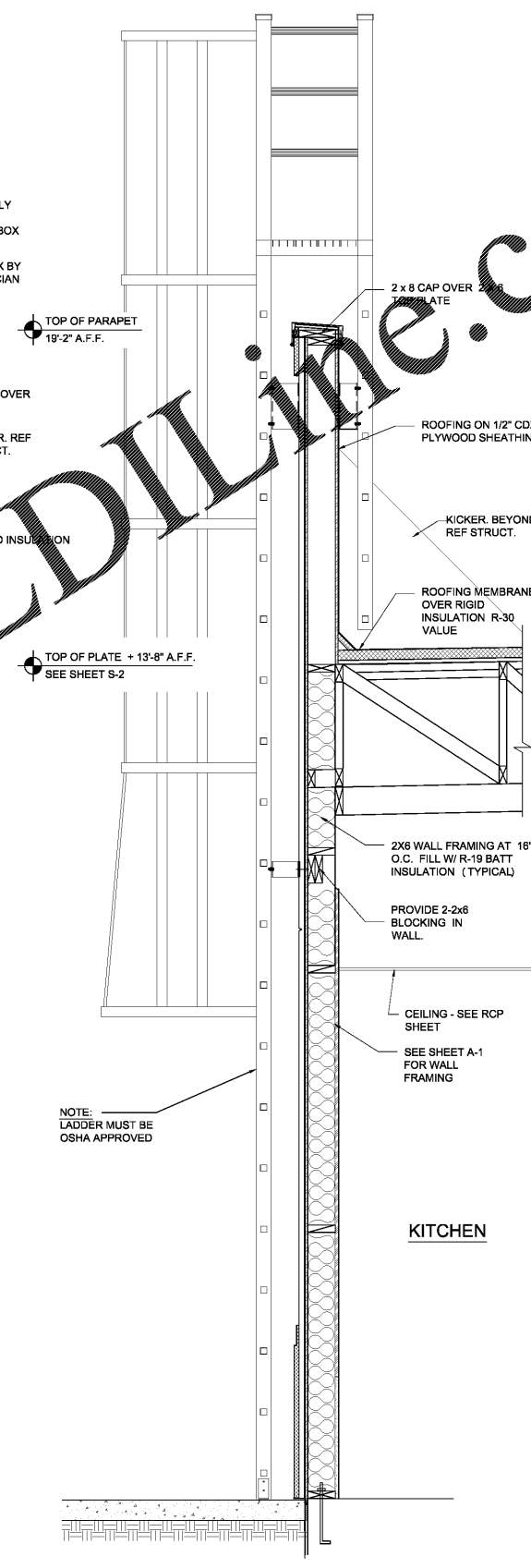
1 WALL SECTION @ DINING ROOM
 A9 3/4"=1'-0"



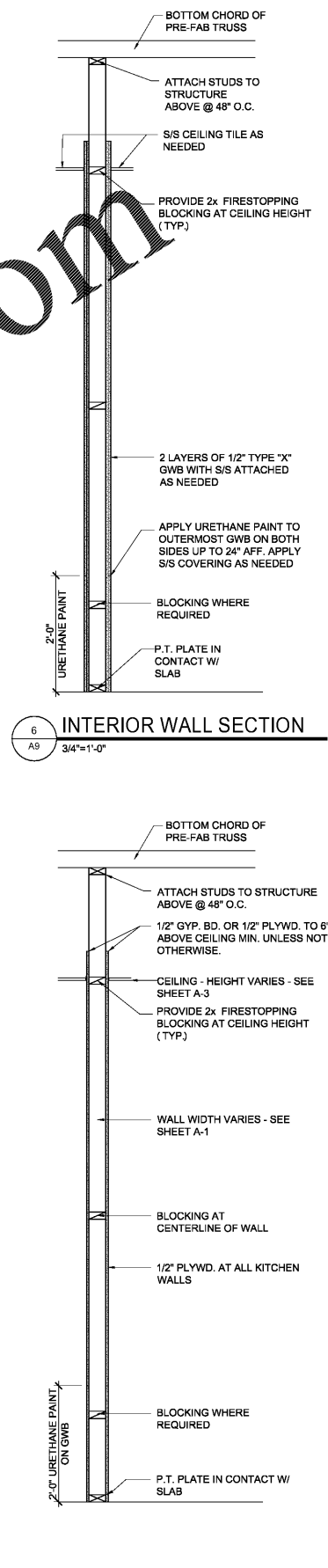
2 WALL SECTION @ TOILET ROOMS
 A9 3/4"=1'-0"



3 SECTION AT FRONT OF DINING ROOM
 A9 3/4"=1'-0"



4 SECTION @ LADDER
 A9 3/4"=1'-0"



5 INTERIOR WALL SECTION
 A9 3/4"=1'-0"

progressive | ae

PROGRESSIVE ARCHITECTURE ENGINEERING, P.C.
 330 South Tryon St, Suite 500 | Charlotte, NC 28202 | 704.731.8800 | www.progressiveae.com

LOUISIANA KITCHEN

POPEYE'S

LEBLON FRANCHISING HOLDINGS, L.L.C.
POPEYE'S
 LOUISIANA KITCHEN
 921 CONCORD PARKWAY SOUTH,
 CONCORD, NC, 28027

51348
 CHARLOTTE, NC
 08/14/2020

FOR CONSTRUCTION

ISSUANCE
 PERMIT SUBMITTAL 08/14/2020

NO.	DATE	DESCRIPTION
1		

FILE NUMBER 86560010
 PROJECT MANAGER DRG
 PROFESSIONAL JRD
 DRAWN BY DRG
 CHECKED BY DS

WALL SECTIONS
A9