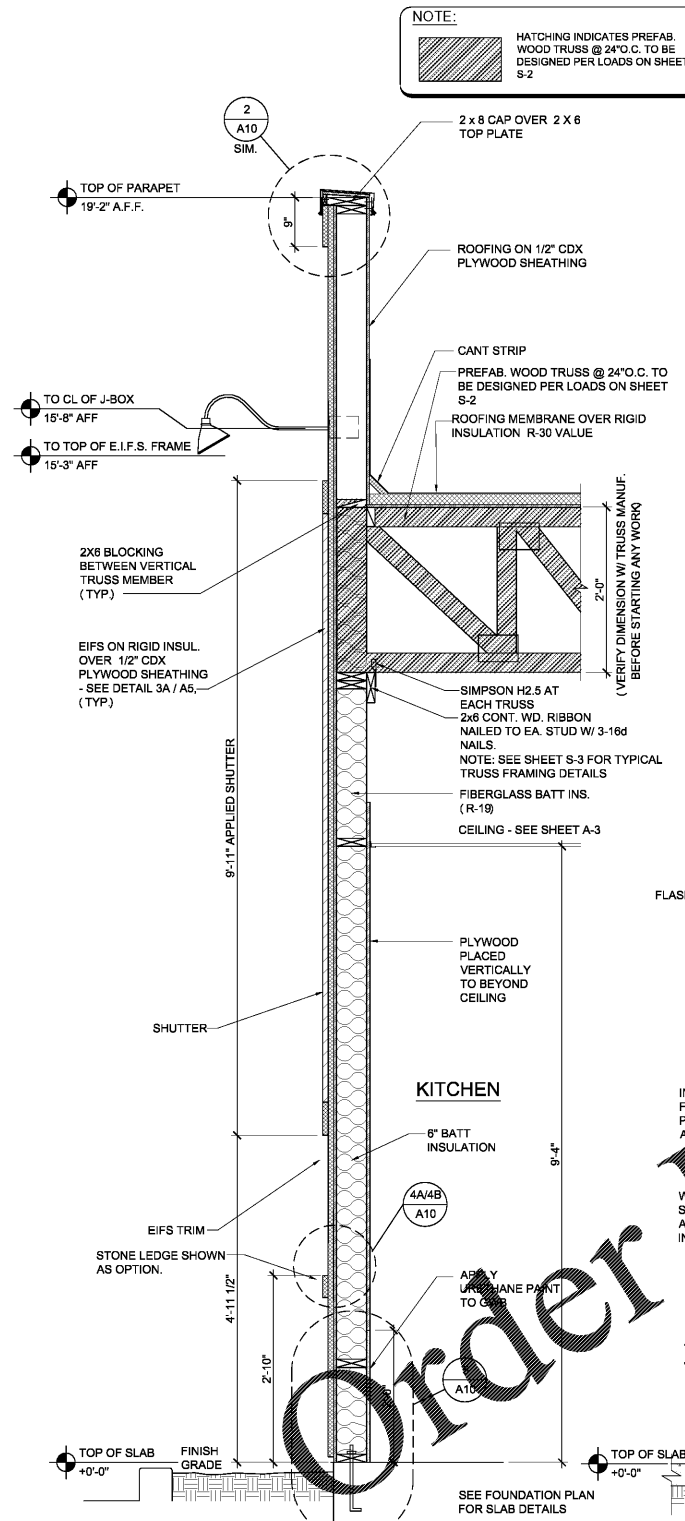
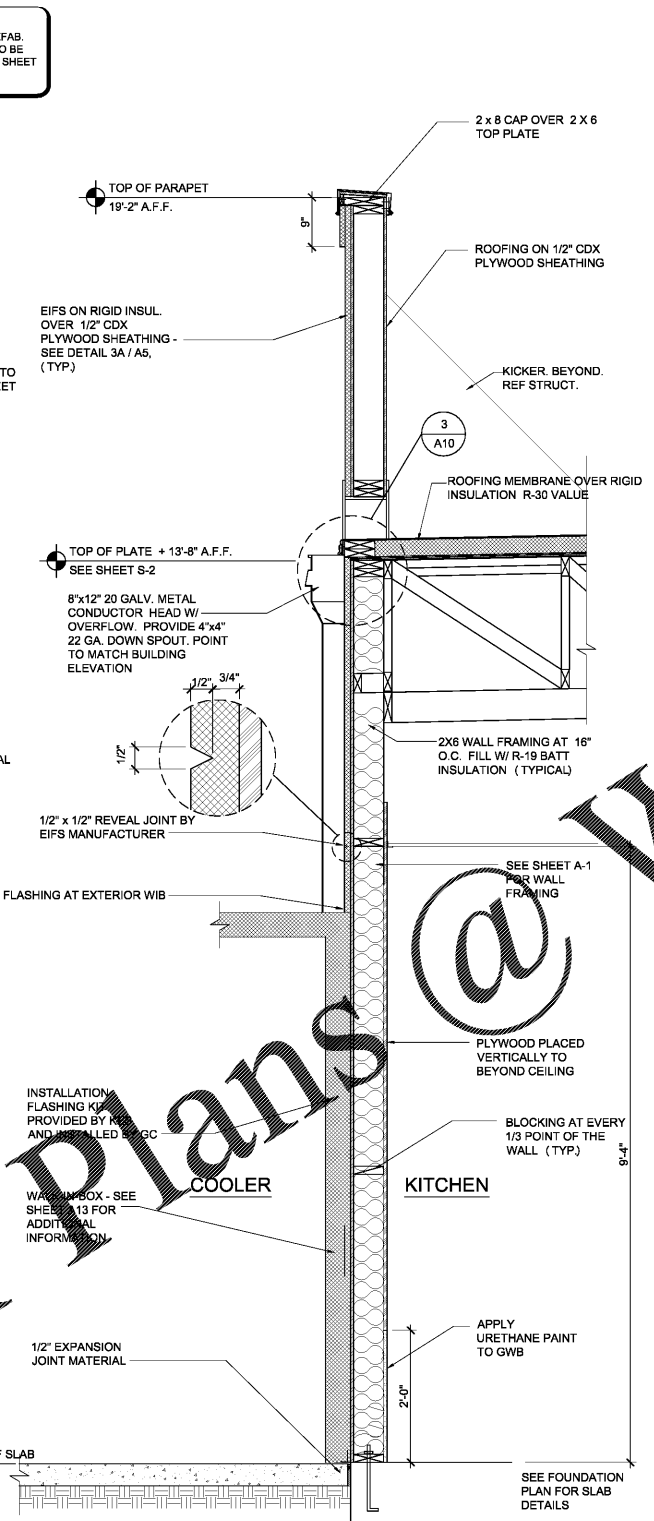


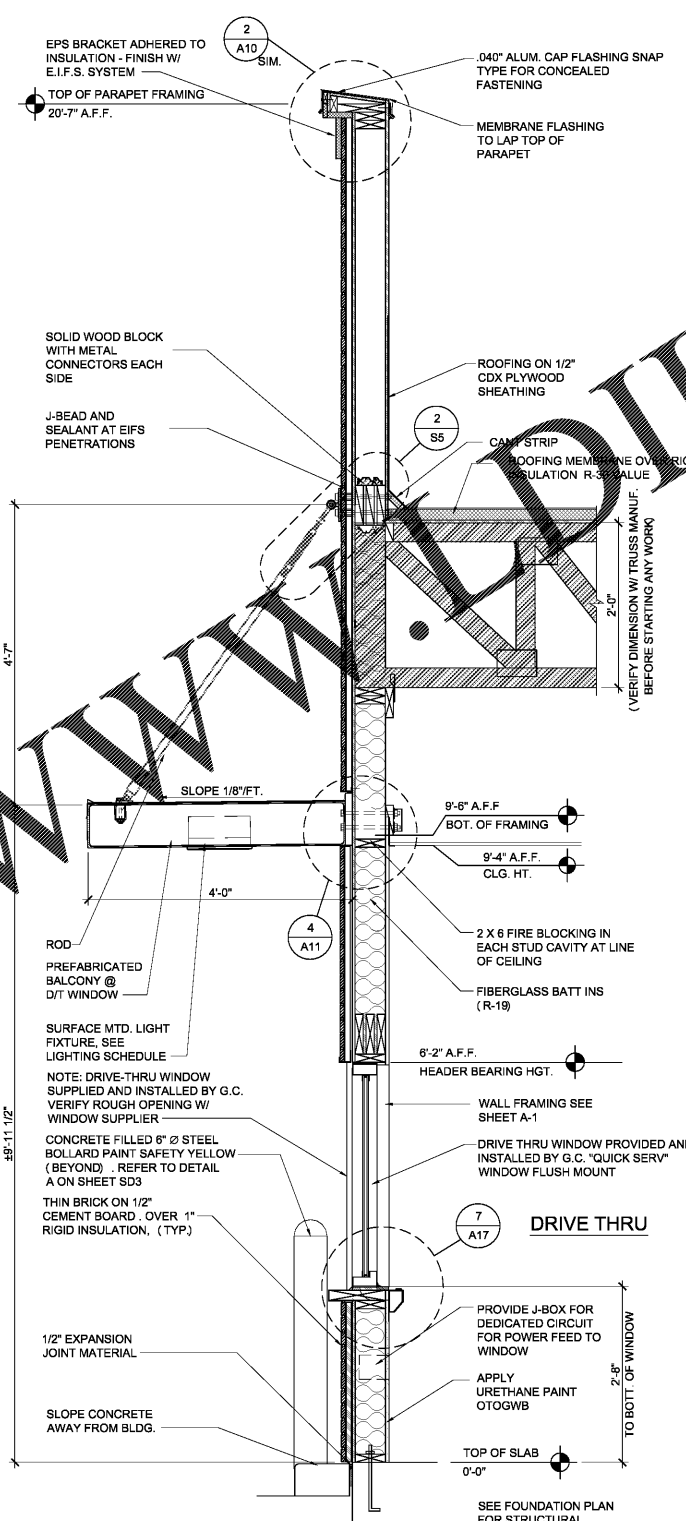
ARCHITECTURE ENGINEERING, P.C. SHALL RETAIN ALL COMMON LAW, STATUTORY AND OTHER RESERVED RIGHTS, INCLUDING THE COPYRIGHT THEREIN. PROGRESSIVE ARCHITECTURE ENGINEERING, P.C. SHALL RETAIN ALL COMMON LAW, STATUTORY AND OTHER RESERVED RIGHTS, INCLUDING THE COPYRIGHT THEREIN.



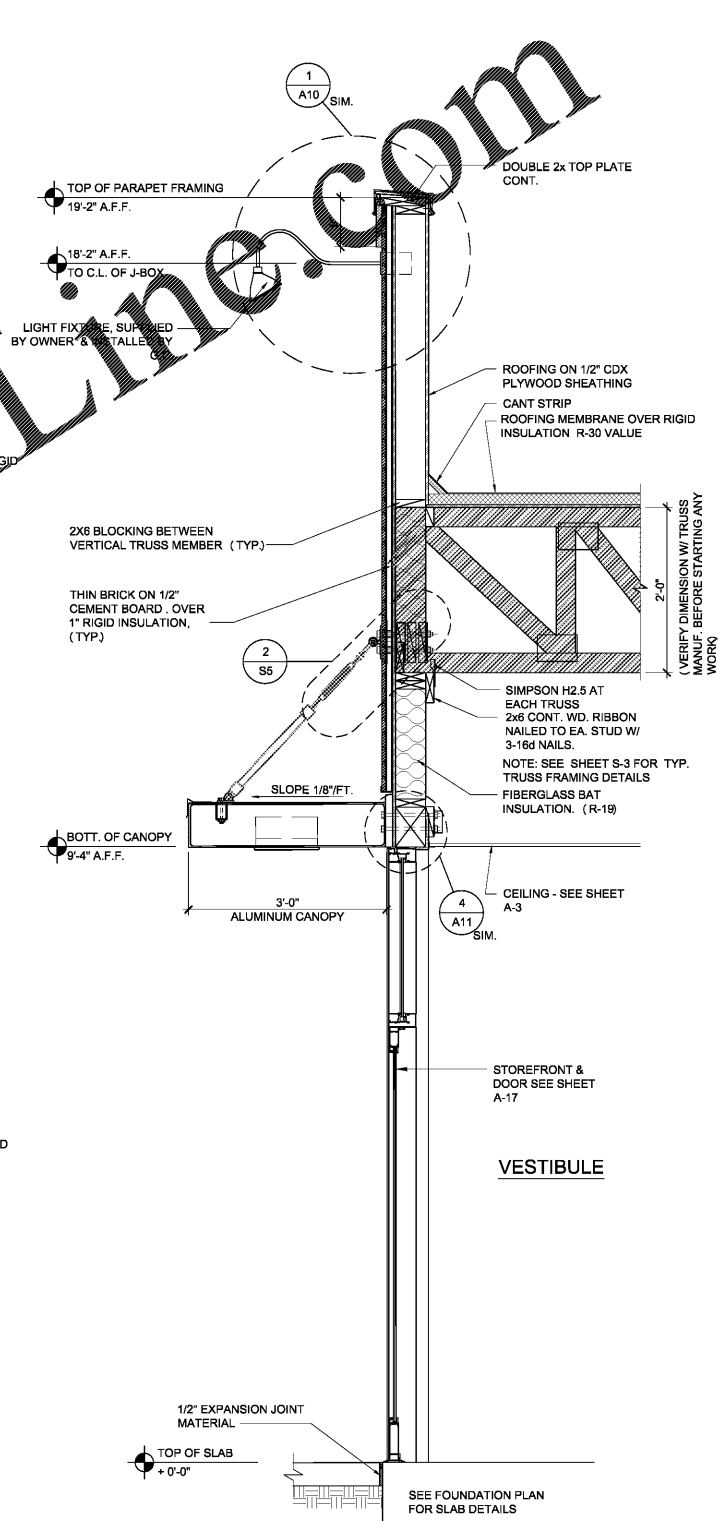
1 WALL SECTION @ KITCHEN  
3/4"=1'-0"



2 WALL SECTION @ COOLER/FREEZER  
3/4"=1'-0"



3 SECTION AT DRIVE-THRU WINDOW  
3/4"=1'-0"



4 SECTION @ DINING  
3/4"=1'-0"

**NOTE:**  
 HATCHING INDICATES PREFAB. WOOD TRUSS @ 24\"/>

WWW.WALLDLINE.COM

**progressive|ae**  
 PROGRESSIVE ARCHITECTURE ENGINEERING, P.C.  
 330 South Tryon St. Suite 500 | Charlotte, NC 28202 | 704.731.8880 | www.progressiveae.com

**POPEYE'S**  
 LOUISIANA KITCHEN  
 921 CONCORD PARKWAY SOUTH  
 CONCORD, NC, 28027

**FOR CONSTRUCTION**  
 If this document is sealed and signed in a digital or electronic format and is received from someone other than the sealing professional identified in the document, you must contact the sealing professional in writing to validate the authority of the document. The sealing professional disclaims the seal and signature and shall not be liable for any liability associated with it where the authority of any digital or electronic seal or signature has not been validated in this manner.

**ISSUANCE**  
 PERMIT SUBMITTAL 08/14/2020

NO.	DATE	DESCRIPTION

FILE NUMBER 86560010  
 PROJECT MANAGER DRG  
 PROFESSIONAL JRD  
 DRAWN BY DRG  
 CHECKED BY DS

**WALL SECTIONS**  
**A8**