

SPECIFICATIONS:

DIVISION 7: THERMAL AND MOISTURE PROTECTION

GENERAL PROVISION

SECTION 7C: SHEET METAL WORK

1. SCOPE: FURNISH AND INSTALL GRAVEL STOPS, FLASHING, PARAPET CAP, DOWNSPOUTS, AND GUTTERS.

A. ROOFING MEMBRANE FLASHING IS INCLUDED IN SECTION 7B: MEMBRANE ROOFING.

MATERIALS

1. MATERIALS SHEET METAL: .032 ALUMINUM.

2. NAIL FASTENERS: 1/4" X 11 GAUGE GALVANIZED, STAINLESS STEEL, OR ALUMINUM ROOFING NAILS MAY BE USED FOR FASTENERS INTO WOOD WHEN CONCEALED ONLY.

3. WASHERS: NEOPRENE

4. SCREW FASTENERS: CORROSION-RESISTANT, SELF-TAPPING, HEX HEAD SCREW, 1/4" MINIMUM DIAMETER WITH SUFFICIENT LENGTH TO PENETRATE 1" MINIMUM INTO WOOD OR 1/2" MINIMUM INTO STEEL. PROVIDE NEOPRENE SEALING WASHER FOR EXPOSED FASTENING.

PERFORMANCE

1. INSTALLATION: EXPOSED FLASHINGS SHALL BE PAINTED TO MATCH ADJACENT MATERIALS. VERIFY WITH POPEYE'S CONSTRUCTION MANAGER.

SECTION 7D: STANDING SEAM CANOPY

PART 1 - GENERAL

1.0 SUBMITTALS

A. SUBMIT FOR APPROVAL SAMPLES, SHOP DRAWINGS, PRODUCT DATA.

QUALITY ASSURANCE

A. COMPLY WITH GOVERNING CODES AND REGULATIONS. PROVIDE PRODUCTS OF ACCEPTABLE MANUFACTURERS WHICH HAVE BEEN IN SATISFACTORY USE IN SIMILAR SERVICE FOR THREE YEARS. USE EXPERIENCED INSTALLERS. DELIVER, HANDLE, STORE MATERIALS IN ACCORDANCE WITH MANUFACTURER'S INSTRUCTIONS.

WARRANTY

METAL ROOF SYSTEM MANUFACTURER, UPON FINAL ACCEPTANCE FOR PROJECT, FURNISH A WARRANTY COVERING BARE METAL AGAINST RUPTURE, STRUCTURAL FAILURE AND PERFORATION DUE TO NORMAL ATMOSPHERIC CORROSION EXPOSURE FOR A PERIOD OF 20 YEARS.

PART 2 - PRODUCTS (UC-4 SERIES, AS MANUFACTURED AND SPECIFIED BY UNACLAD, METAL ROOF SYSTEMS)

2.0 MATERIALS

A. METAL ROOF SYSTEM PROFILE:

- UC-4 "NO CLIP", 1 1/2" HIGH BATTENS x 12" RIB TO RIB (SMALL BATTENS)
- CONCEALED FASTENER

B. GAUGE: .026 GAUGE - STEEL

C. TEXTURE: 1. SMOOTH

D. FINISH:

- PREMIUM FLUOROCARBON COATINGS PRODUCED WITH KYNAR 500 OR HYLAR 5000 RESIN (20 YEAR WARRANTY.)

E. MANUFACTURER:

- UNACLAD OR EQUAL

PART 3 - EXECUTION

3.0 INSTALLATION

A. COMPLY WITH SMACNA SHEET METAL MANUAL RECOMMENDATIONS. COMPLY WITH ACCESSORY MANUFACTURERS' INSTRUCTIONS AND RECOMMENDATIONS. COORDINATE INSTALLATION WITH ROOFING SYSTEM TO ENSURE WEATHERIGHT PERFORMANCE.

B. ANCHOR SECURELY TO STRUCTURE TO WITHSTAND INWARD AND OUTWARD LOADS.

C. ISOLATE DISSIMILAR METALS TO PREVENT GALVANIC CORROSION.

DIVISION 9: FINISHES

SECTION 9G: EIFS

PART 1 - GENERAL

1.01 DESCRIPTION

A. DESIGN REQUIREMENTS: THE STRUCTURAL WALL SYSTEM TO WHICH THE EIFS IS ATTACHED SHALL MEET L/240 MAXIMUM ALLOWABLE DEFLECTION CRITERIA AND APPLICABLE BUILDING CODE REQUIREMENTS.

1.02 SUBMITTALS

A. SUBMIT SAMPLES FOR APPROVAL AS DIRECTED BY OWNER.

1.03 DELIVERY, STORAGE AND HANDLING

A. ALL EIFS MATERIALS SHALL BE DELIVERED IN THEIR ORIGINAL SEALED CONTAINERS BEARING MANUFACTURER'S NAME AND IDENTIFICATION OF PRODUCT WITH WRITTEN APPLICATION INSTRUCTIONS AND APPROPRIATE HEALTH, HAZARD, AND SAFETY DATA.

B. ALL EIFS READY-MIXED MATERIALS SHALL BE PROTECTED FROM EXTREME HEAT, SUN AND FROST. FACTORY PROPORTIONED BAGGED MATERIALS SHALL BE STORED OFF THE GROUND AND PROTECTED FROM MOISTURE.

1.04 JOB CONDITIONS

A. ALL EIFS MATERIALS SHALL NEVER BE APPLIED IF AMBIENT AND SURFACE TEMPERATURES CANNOT BE KEPT ABOVE 40° F DURING APPLICATION AND DRYING PERIOD. FOR INSTALLATION IN TEMPERATURES LESS THAN 40° F SUPPLEMENTARY HEAT SHALL BE PROVIDED. THE INSTALLED EIFS MATERIALS SHALL BE PROTECTED FROM EXPOSURE TO RAIN AND FREEZING UNTIL DRY.

1.11 WARRANTY

A. PROVIDE MANUFACTURER'S STANDARD LABOR AND MATERIAL WARRANTY.

PART 2 - PRODUCTS

2.01 MANUFACTURERS

A. DRYVIT SYSTEMS, INC.

2.02 ADHESIVES

A. DISPERSION ADHESIVE - NONCEMENTITIOUS, ACRYLIC BASED ADHESIVE.

2.03 INSULATION BOARD

A. NOMINAL 1.0 pcf (16 kg/cubic meter) EXPANDED POLYSTYRENE (EPS) INSULATION BOARD IN COMPLIANCE WITH ASTM C 578 TYPE I REQUIREMENTS, AND ANIMA GUIDELINE SPECIFICATION FOR EXPANDED POLYSTYRENE (EPS) INSULATION BOARD.

2.04 BASECOAT

A. ONE-COMPONENT POLYMER MODIFIED CEMENTITIOUS BASE COAT WITH FIBER REINFORCEMENT, LESS THAN 1% PORTLAND CEMENT CONTENT BY WEIGHT.

2.05 REINFORCING MESHES

A. STANDARD MESH

- MESH - NOMINAL 4.5 oz/sq. yd. (163 gsm/meter), SYMMETRICAL, INTERLACED OPEN-WEAVE GLASS FIBER FABRIC MADE WITH MINIMUM 25 PERCENT BY WEIGHT ALKALINE RESISTANT COATING FOR COMPATIBILITY WITH DRYVIT MATERIALS.
- HIGH IMPACT MESH

 - INTERMEDIATE MESH (MESH C) - NOMINAL 11.0 oz/sq. yd. HIGH IMPACT, INTERWOVEN, OPEN WEAVE GLASS FIBER FABRIC WITH ALKALINE RESISTANT COATING FOR COMPATIBILITY WITH DRYVIT MATERIALS.

2.06 PRIMER

A. PRIMER

ACRYLIC BASED PRIMER (FOR ACRYLIC BASED FINISHES)

2.07 FINISH COAT

A. ACRYLIC BASED TEXTURED WALL COATINGS. SEE E.I.F.S. FORMULAS FOR FINISH COLOR.

2.08 JOB MIXED INGREDIENTS

A. PORTLAND CEMENT: ASTM C 150, TYPE I.

B. WATER: CLEAN AND POTABLE.

PART 3 EXECUTION

A. UNDER NO CIRCUMSTANCES SHALL ANY OF THE PRODUCTS BE ALTERED BY ADDING ANY ADDITIVES, EXCEPT FOR SMALL AMOUNTS OF CLEAN WATER AS DIRECTED ON LABEL. ANTIFREEZE, ACCELERATORS, RAPID BINDERS, ETC., ARE FORBIDDEN.

B. THE SURFACE TO RECEIVE THE EIFS SHALL BE STRUCTURALLY SOUND, CLEAN, DRY AND FREE OF WARPAGE, RESIDUAL MOISTURE OR DAMAGE FROM MOISTURE. SURFACES SHALL BE UNIFORM WITH NO IRREGULARITIES GREATER THAN 1/8" IN 4'-0". SURFACES SHALL BE INSPECTED FOR COMPLIANCE WITH THE FOLLOWING REQUIREMENTS PRIOR TO INSTALLATION OF THE EIFS:

- PLYWOOD SHEATHING SHALL MEET A.P.A. (AMERICAN PLYWOOD ASSOCIATION) REQUIREMENTS FOR EXTERIOR OR EXPOSURE 1 CLASSIFICATION APA DESIGN AND CONSTRUCTION GUIDELINES SHALL BE FOLLOWED FOR STORAGE, HANDLING AND INSTALLATION. MANUFACTURER'S PUBLISHED RECOMMENDATIONS SHALL BE FOLLOWED FOR HANDLING, INSTALLATION AND PROTECTION. ANY SHEATHING NOT IN COMPLIANCE SHALL BE REPLACED TO CONFORM WITH SPECIFICATION REQUIREMENTS PRIOR TO INSTALLATION OF THE EIFS.
- CONCRETE, MASONRY OR PLASTER SURFACES SHALL BE PROPERLY CURED AND FREE OF DIRT, DUST, OIL, GREASE, MILDEW, FUNGUS, LATENCY, PAINT, EFFLORESCENCE AND ANY OTHER CONTAMINANT. ANY SURFACES NOT IN COMPLIANCE SHALL BE CORRECTED PER MANUFACTURER'S RECOMMENDATIONS PRIOR TO INSTALLATION OF THE EIFS.

C. AFTER SATISFACTORY INSPECTION OF SURFACES AND CORRECTION OF ANY DEVIATIONS FROM SPECIFICATION REQUIREMENTS, THE EIFS INSTALLATION MAY BEGIN PER MANUFACTURER'S INSTRUCTIONS.

D. THE STARTER STRIP OF MESH SHALL BE WIDE ENOUGH TO ADHERE 4" OF MESH ONTO THE WALL, BE ABLE TO WRAP AROUND THE BOARD EDGE AND COVER APPROXIMATELY 4" ON THE OUTSIDE SURFACE OF THE BOARD. THIS "BACKWRAP" PROCEDURE SHALL BE FOLLOWED AT ALL EXPOSED BOARD EDGES IN ACCORDANCE WITH DETAILS (EXAMPLE-WINDOW AND DOOR HEADS AND JAMBS).

ALL AREAS WHERE THE EIFS MEETS DISSIMILAR MATERIAL OR TERMINATES (FOR EXAMPLE, WINDOW AND DOOR FRAMES) SHALL HAVE THE INSULATION BOARD CUT BACK FROM THE ADJOINING MATERIAL A MINIMUM OF 1/4" TO FORM AN ISOLATION JOINT.

E. APPLY THE ADHESIVE TO THE BACK OF THE INSULATION BOARD, STAGGER VERTICAL JOINTS AND INTERLOCK BOARDS AT ALL INSIDE AND OUTSIDE CORNERS. APPLY FIRM PRESSURE OVER ENTIRE SURFACE OF THE BOARDS TO INSURE UNIFORM CONTACT. BOARDS SHALL BRIDGE SHEATHING JOINTS BY A MINIMUM OF 8". ALL BOARD JOINTS SHALL BE BUTTED TIGHTLY TOGETHER TO ELIMINATE ANY THERMAL BREAKS IN THE EIFS. CARE MUST BE TAKEN TO PREVENT ANY ADHESIVE FROM GETTING BETWEEN THE JOINTS OF THE BOARDS. ALL OPEN JOINTS IN THE INSULATION BOARD LAYER SHALL BE FILLED WITH SILVERS OF INSULATION OR AN APPROVED SPRAY FOAM.

F. NAILS, SCREWS, OR ANY OTHER TYPE OF NON-THERMAL MECHANICAL FASTENER SHALL NOT BE USED.

G. EXPANSION JOINTS ARE REQUIRED IN THE EIFS WHERE THEY EXIST IN THE SUBSTRATE, WHERE THE EIFS ADJOINS DISSIMILAR CONSTRUCTION, AND AT FLOOR LINES IN MULTILEVEL WOOD FRAME CONSTRUCTION. THE EIFS SHALL TERMINATE AT THE EXPANSION JOINT TO PROVIDE APPROPRIATE JOINT SIZE (SEE DETAILS) AND ALL BOARD EDGES SHALL BE COATED WITH APPROPRIATE GROUND COAT AND MESH IN ACCORDANCE WITH STANDARD "BACKWRAPPING" PROCEDURE. APPROPRIATE SEALANT/PRIMER AND BACKER SHALL BE INSTALLED AFTER GROUND COAT IS FULLY DRY TO PREVENT ANY WATER FROM GETTING INTO OR UNDER THE SYSTEM.

H. USE OF PLASTIC OR METAL CORNER BEADS, STOPBEADS, ETC., IS FORBIDDEN.

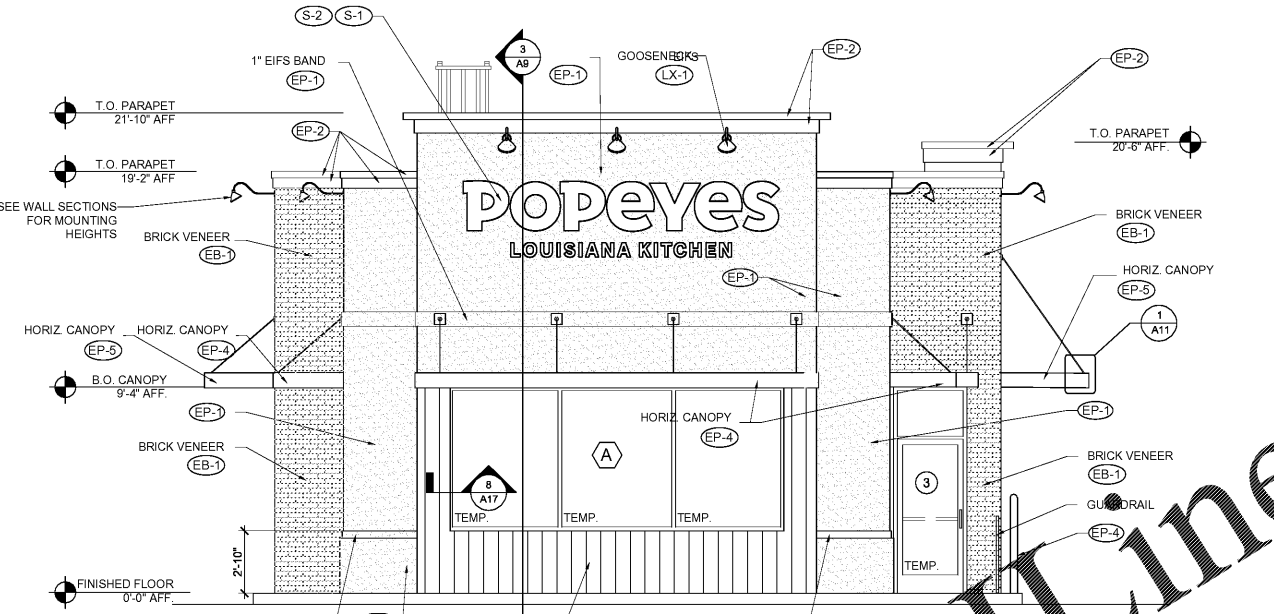
I. APPLY APPROPRIATE GROUND COAT OVER THE INSULATION BOARD WITH PROPER SPRAY EQUIPMENT OR A STAINLESS STEEL TROWEL TO A UNIFORM THICKNESS OF APPROXIMATELY 1/16". WORK HORIZONTALLY OR VERTICALLY IN STRIPS OF 4'-0" AND IMMEDIATELY EMBED STANDARD REINFORCING MESH INTO THE WET GROUND COAT. THE MESH SHALL BE DOUBLE WRAPPED AT ALL CORNERS AND OVERLAPPED NOT LESS THAN 2-1/2" AT MESH JOINTS AVOID WRINKLES IN THE MESH. THE FINISH THICKNESS OF THE GROUND COAT SHALL BE SUCH THAT THE MESH IS FULLY EMBEDDED. ALLOW GROUND COAT TO THOROUGHLY DRY BEFORE APPLYING PRIMER OR FINISH.

J. DUPLICATE INSTALLATION PROCESS NOTED IN 3.01 M USING STANDARD MESH CREATING SECOND MESH LAYER AND ADDITIONAL IMPACT RESISTANCE. ALLOW TO DRY BEFORE APPLICATION OF EITHER STO PRIMER (OPTIONAL) OR STO FINISH.

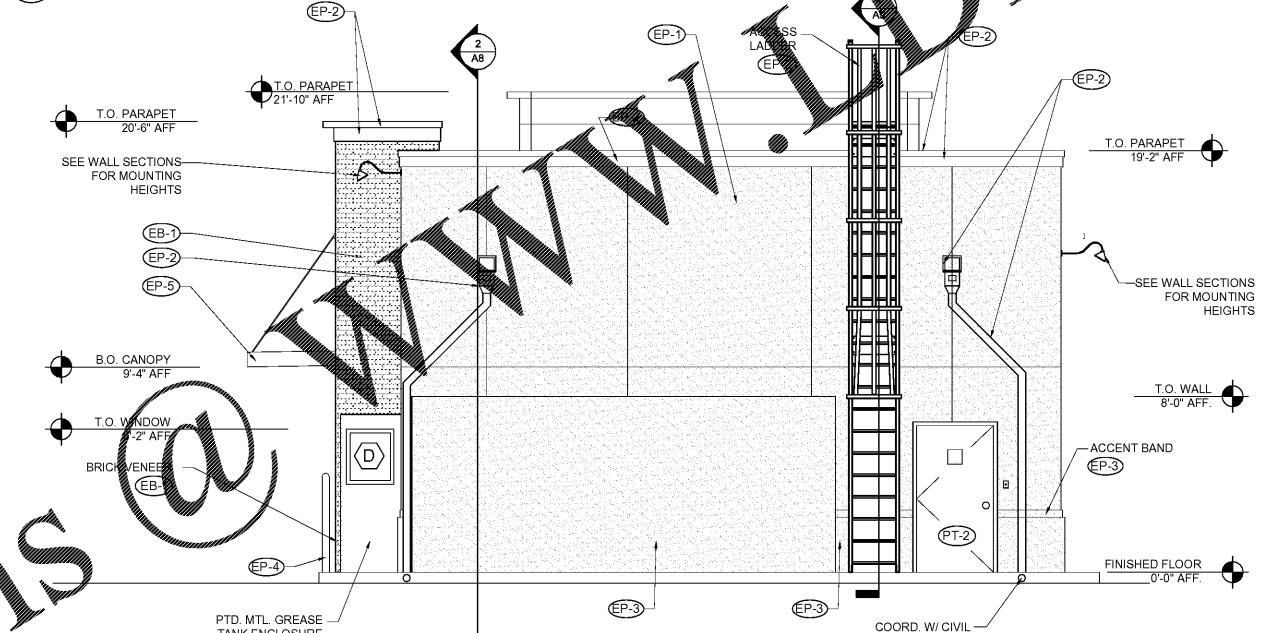
K. IF A PRIMER IS USED, APPLY WITH BRUSH, ROLLER OR PROPER SPRAY EQUIPMENT OVER CLEAN, DRY GROUND COAT AND ALLOW TO DRY THOROUGHLY BEFORE APPLYING PRIMER. APPLY PRIMER DIRECTLY OVER THE GROUND COAT OR THE GROUND COAT ONLY AFTER THE GROUND COAT PRIMER HAS DROULED. DRY THE FINISH SHALL BE APPLIED BY TROWELING OR POWER TROWELING WITH A STAINLESS STEEL TROWEL. FINISH COAT SHALL FOLLOW GENERAL RULES FOR APPLICATION OF FINISHES AS FOLLOWS:

- USE A CLEAN, RUST-FREE, HIGH SPEED MIXER TO THOROUGHLY MIX THE FINISH TO A UNIFORM CONSISTENCY (SMALL AMOUNTS OF CLEAN WATER MAY BE ADDED TO AID WORKABILITY).
- AVOID APPLICATION IN DIRECT SUNLIGHT.
- FINISH IN A CONTINUOUS APPLICATION, ALWAYS WORKING TO AN EDGE.
- WEATHER CONDITIONS AFFECT APPLICATION AND DRYING. THE HOT OR DRY CONDITIONS LIMIT WORKING TIME AND PREVENT DRYING AND MAY REQUIRE ADJUSTMENTS IN THE SCHEDULING OF WORK TO ACHIEVE DESIRED RESULTS; COOL OR DAMP CONDITIONS EXTEND WORKING TIME AND RETARD DRYING AND MAY REQUIRE ADDED MEASURES OF PROTECTION AGAINST WIND, DUST, DRIFT, RAIN AND FREEZING.
- AESTHETIC "U"-GROOVES MAY BE DESIGNED INTO THE SYSTEM. (A MINIMUM OF 3/4" INSULATION BOARD MUST BE LEFT AFTER ANY GROOVES ARE CUT).
- "R" (RILLED TEXTURE) FINISHES MUST BE FLOATED WITH A PLASTIC TROWEL TO ACHIEVE THEIR RILLED TEXTURE.
- AVOID INSTALLING SEPARATE BATCHES OF FINISH SIDE-BY-SIDE.
- APPLY FINISH COLOR TO EIFS MIX AND APPLY TO WALL COLOR TO MATCH EXTERIOR FINISH SCHEDULE COLORS.

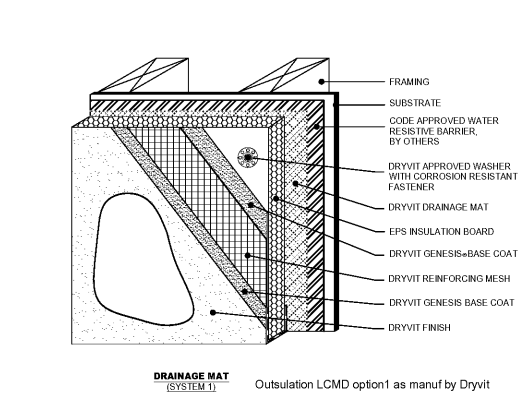
L. EXTERIOR INSULATION AND FINISH TEXTURE SYSTEM: APPLY HIGH IMPACT SYSTEM ADJACENT TO DOORS FOR ADDITIONAL IMPACT RESISTANCE. USING INTERMEDIATE MESH. USE THE STANDARD SYSTEM SPECIFICATIONS AT ALL OTHER LOCATIONS.



1 FRONT ELEVATION
1/4"=1'-0"



2 REAR ELEVATION
1/4"=1'-0"



3A TYP. DRAINABLE EIFS DETAIL
A5.0 NTS

EXTERIOR FINISH AND MATERIAL SCHEDULE							
CODE	MATERIAL	LOCATION	MANUFACTURER	PRODUCT	DESCRIPTION	DIMENSIONS	ADDITIONAL INFORMATION
EP-1	EXTERIOR PAINT	MAIN WALL SURFACE ABOVE WAINGCOT ACCENT TRIM	BENJAMIN MOORE	PRIMER: PAINT: COLOR: OC-128 Moonlight White	White		Contact: Rodger Lippman, Architectural Account Executive Phone: (800) 344-6400 Ext 8240 email: rodger.lippman@benjaminmoore.com
EP-2	EXTERIOR PAINT	PARAPET TRIM		PRIMER: PAINT: COLOR: 2120-20 Black Iron	Black		
EP-3	EXTERIOR PAINT	WAINGCOT ACCENT TRIM AND BELOW		PRIMER: PAINT: COLOR: 1099 Stonington Grey	Grey		
EP-4	EXTERIOR PAINT	BOLLARDS, Pylon POLE AND DIRECTIONAL SIGN POLES		PRIMER: PAINT: COLOR: 2086 Eclat Red	Red		
EP-5	EXTERIOR PAINT	DRIVE THRU WINDOW CANOPY	BENJAMIN MOORE	PRIMER: Pro Industrial Pro-Cryl Primer B66-310 PAINT: Pro Industrial High Performance Acrylic B66-660	FACTORY FINISH BLACK		
EP-6	EXTERIOR PAINT	DUMPSTER WALLS		PRIMER: PAINT: COLOR: HC-170 Stonington Grey	Grey		
EP-7	EXTERIOR PAINT	DUMPSTER GATES		PRIMER: Pro Industrial Pro-Cryl Primer B66-310 PAINT: Pro Industrial High Performance Acrylic B66-660	FACTORY FINISH BLACK		
EP-8	EXTERIOR PAINT	ALL EXTERIOR WALLS	BENJAMIN MOORE	PRIMER: AlphaClear Acrylic Urthane, Clear Gloss PAINT: (2) COATS ON FULL FACED SURFACE	ANTI-GRAFFITI PAINT MT400 #75 COLOR: "Grey" OC-699 Oceanic Teal		
EP-9	EXTERIOR PAINT	ACCENT SHUTTERS		PRIMER: PAINT: COLOR: OC-699 Oceanic Teal	Teal		
EP-1	WOOD SIDING PANEL	EXTERIOR WALLS	NICHHA	VINTAGE WOOD	CEDAR		
EB-1	BRICK	EXTERIOR TOWERS	DESIGN AND DIRECT SOURCE	ARCHITECTURAL URBAN SERIES	FLAGSTAFF		

EXTERIOR FINISH NOTES	
STO COLORS	
Match B.M. "Moonlight White"	
Match B.M. "Stonington Grey"	
DRYVIT COLORS	
Match B.M. "Moonlight White"	
Match B.M. "Stonington Grey"	
E.I.F.S. WALL TEXTURE FINISH	
Manuf	Texture
STO	STO ESSENCE SWIRL
DRYVIT	QUARTZ PUTZ
FINISH NOTES	
THE FOLLOWING COMPONENTS CAN BE PURCHASED FROM THE APPROVED SIGN VENDORS:	
* CLEARANCE BAR	
* MENU CANOPY	
* GUARD RAIL	
* AWNINGS	
* SHUTTERS	
* DUMPSTER GATES	
* EXTERIOR LADDER	

- SIGN MANUFACTURERS**
- A. AAA CONTACT: LINDSEY OLIVER; PHONE (337) 233-5666X3012
LINDSEY@AAASIGNS.COM
- B. ALLEN INDUSTRIES CONTACT: DAVID SIMMONS; PHONE: (336) 615-8731;
DAVID.SIMMONS@ALLENINDUSTRIES.COM
- C. ENTERA CONTACT: JASON BRAGG; PHONE: (850) 392-0801;
JASON.BRAGG@ENTERABRANDING.COM
- D. LOREN SIGNS CONTACT: DAVE PALMGREN; PHONE: (562) 309-5660;
DAVE.P@LORENSIGNS.COM
WARRANTY CONTACT: DAN LORENZON; (562) 946-7545; DAN.L@LORENSIGNS.COM
- E. SIGN RESOURCE CONTACT: JEFF OGLE; PHONE: (866) 771-6676;
JOGLE@SIGNRESOURCE.COM

progressive

PROGRESSIVE ARCHITECTURE ENGINEERING, P.C.
330 South Tryon St, Suite 500 | Charlotte, NC 28202 | 704.731.8880 | www.progressiveae.com

LOUISIANA KITCHEN

POPEYE'S LOUISIANA KITCHEN
921 CONCORD PARKWAY SOUTH
CONCORD, NC, 28027

LEBLON FRANCHISING HOLDINGS, L.L.C.

PROGRESSIVE ARCHITECTURE ENGINEERING, P.C. 51348

PROFESSIONAL ARCHITECTURAL SEALING AUTHORITY
51348
CHARLOTTE, NC

FOR CONSTRUCTION

ISSUANCE PERMIT SUBMITTAL 08/14/2020

REVISIONS NO. DATE DESCRIPTION

FILE NUMBER 86560010
PROJECT MANAGER DRG
PROFESSIONAL JRD
DRAWN BY DRG
CHECKED BY DS

EXTERIOR ELEVATIONS

A5