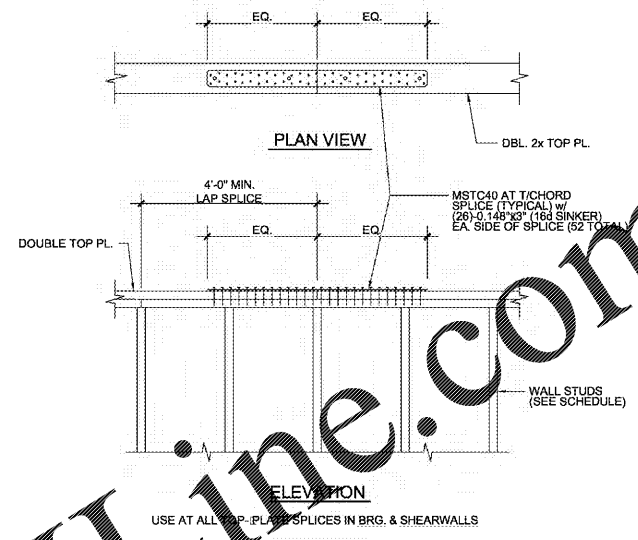
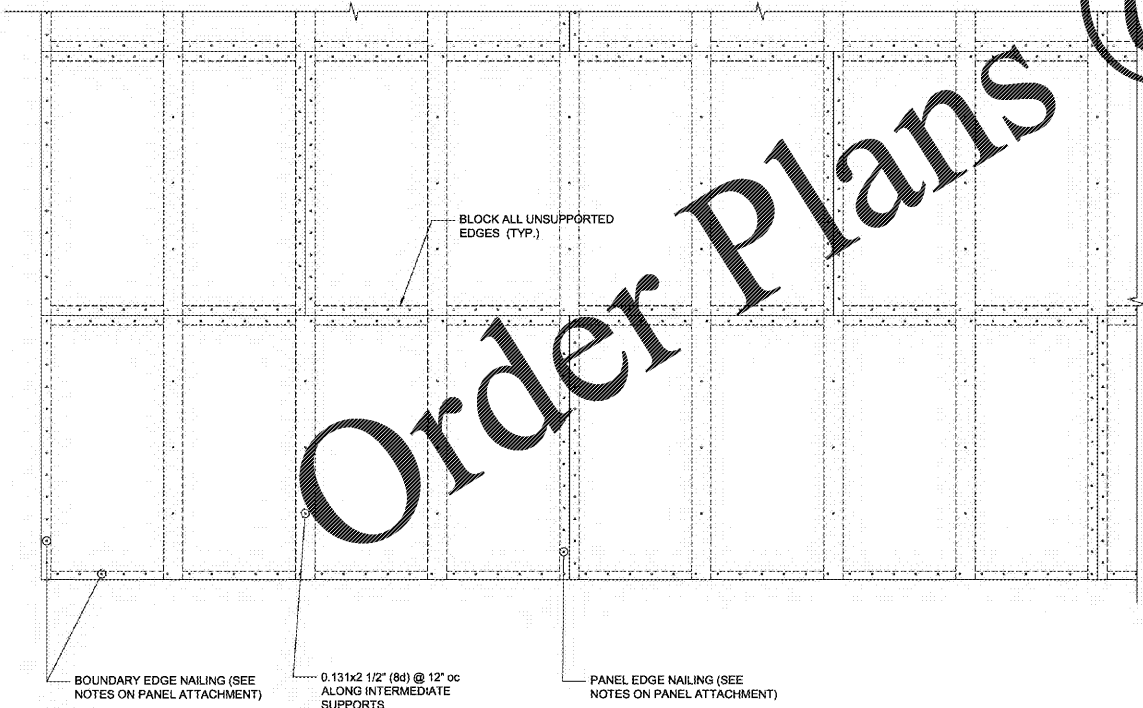


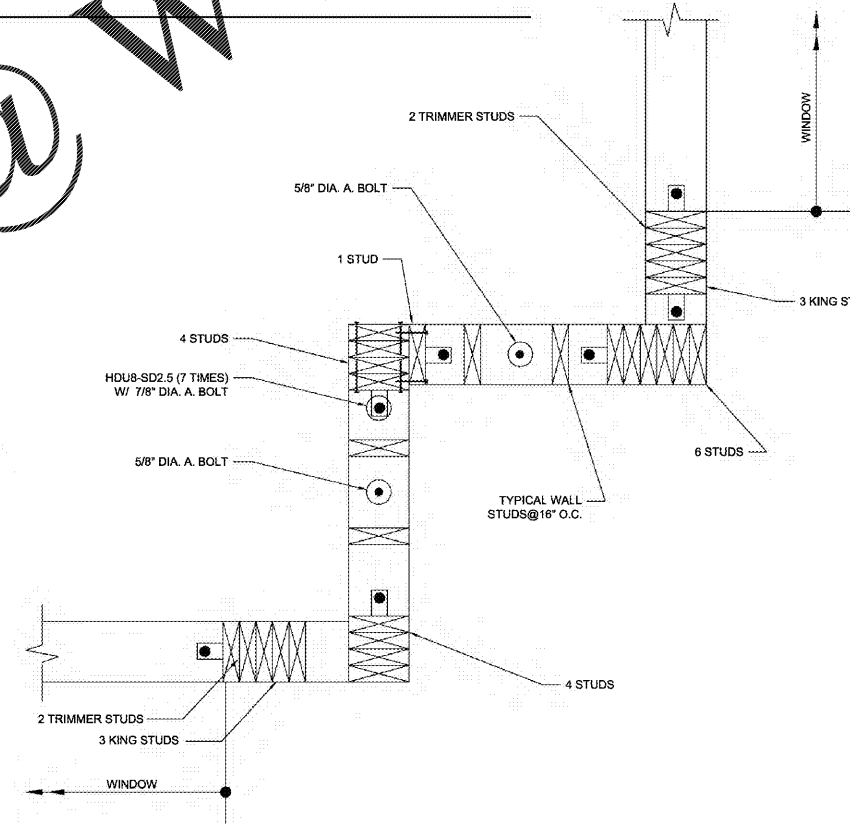
1 TYPICAL DETAIL AT SHEARWALL/WALL OPENINGS - USE IN CONJUNCTION WITH 1/S6
S8 NOT TO SCALE



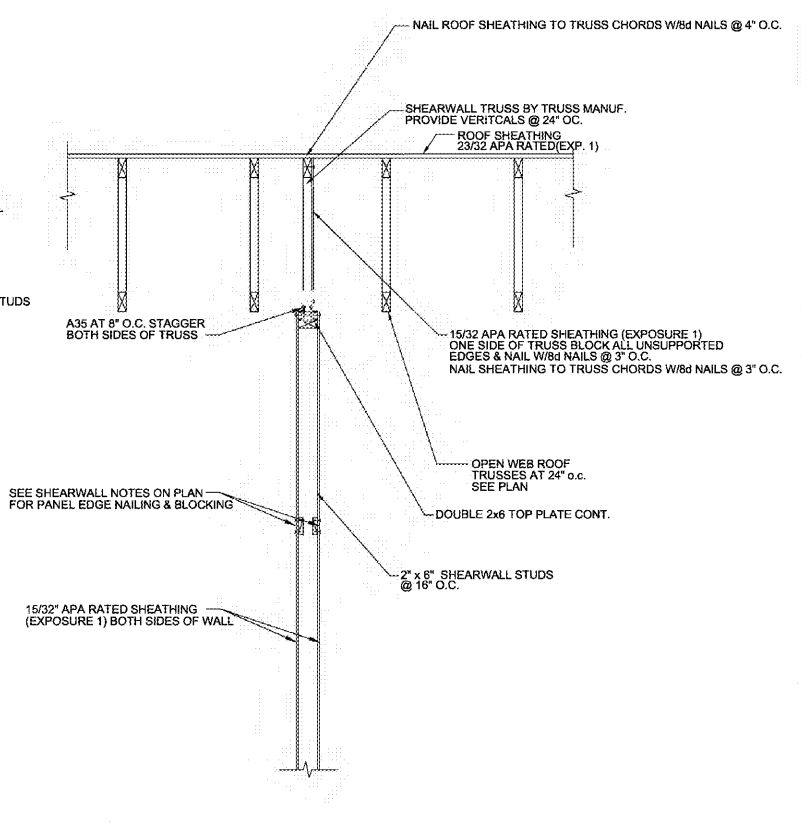
2 TYPICAL TOP PLATE SPLICE
S8 3/4\"/>



3 TYPICAL - ROOF SHEATHING PLAN VIEW
S8 NOT TO SCALE



4 PLAN DETAIL AT SHEARWALL
S8 NTS



5 SECTION AT ROOF AT SHEARWALLS
S8 3/4\"/>

THIS DOCUMENT HAS BEEN PREPARED BY ARP ENGINEERING, INC. AS AN INSTRUMENT OF SERVICE AND ARP ENGINEERING, INC. SHALL RETAIN ALL COMMON LAW, STATUTORY AND OTHER RESERVED RIGHTS, INCLUDING THE COPYRIGHT THEREIN.

Order Plans @ www.LDILine.com

progressive | ae



POPEYE'S

LEBLON FRANCHISING HOLDINGS, LLC. POPEYE'S LOUISIANA KITCHEN 921 CONCORD PARKWAY SOUTH, CONCORD, NC, 28027

ARP ENGINEERING CONSULTING ENGINEERS
202 EAST FRANKLIN STREET, SUITE A
CONCORD, NC 28027
CONTACT: dave@arpeng.com
NC COA 0284



If this document is sealed and signed in a digital or electronic format and is received from someone other than the sealing professional identified in the document, you must contact the sealing professional in writing to validate authenticity of the document. The sealing professional disclaims the seal and signature and shall not be liable for any liability associated with it where the authenticity of any digital or electronic seal or signature has not been validated in this manner.

2020 ARP ENGINEERING, INC.
All Rights Reserved. Unrestricted Reproduction Prohibited.

ISSUANCE PERMIT SUBMITTAL 08/14/2020

NO.	DATE	DESCRIPTION
AEI PROJECT No.		20091
FILE NUMBER		
PROJECT MANAGER		DS
PROFESSIONAL EOR		LDA
DRAWN BY		CADD
CHECKED BY		LDA

SECTIONS AND DETAILS
S8

PROGRESSIVE ARCHITECTURE ENGINEERING, PC
330 South Tryon St., Suite 500 | Charlotte, NC 28202 | 704.731.8080 | www.progressiveae.com