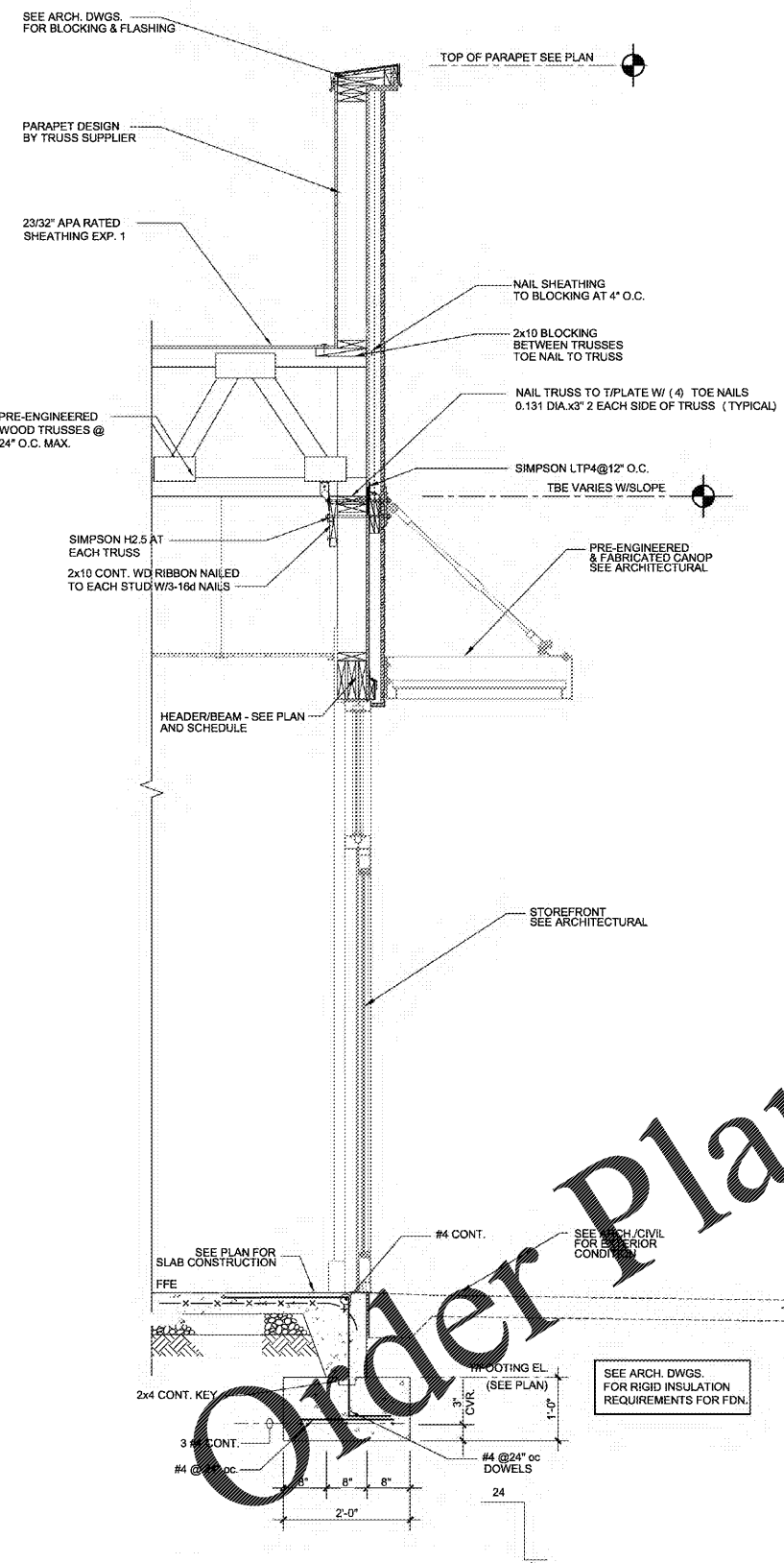
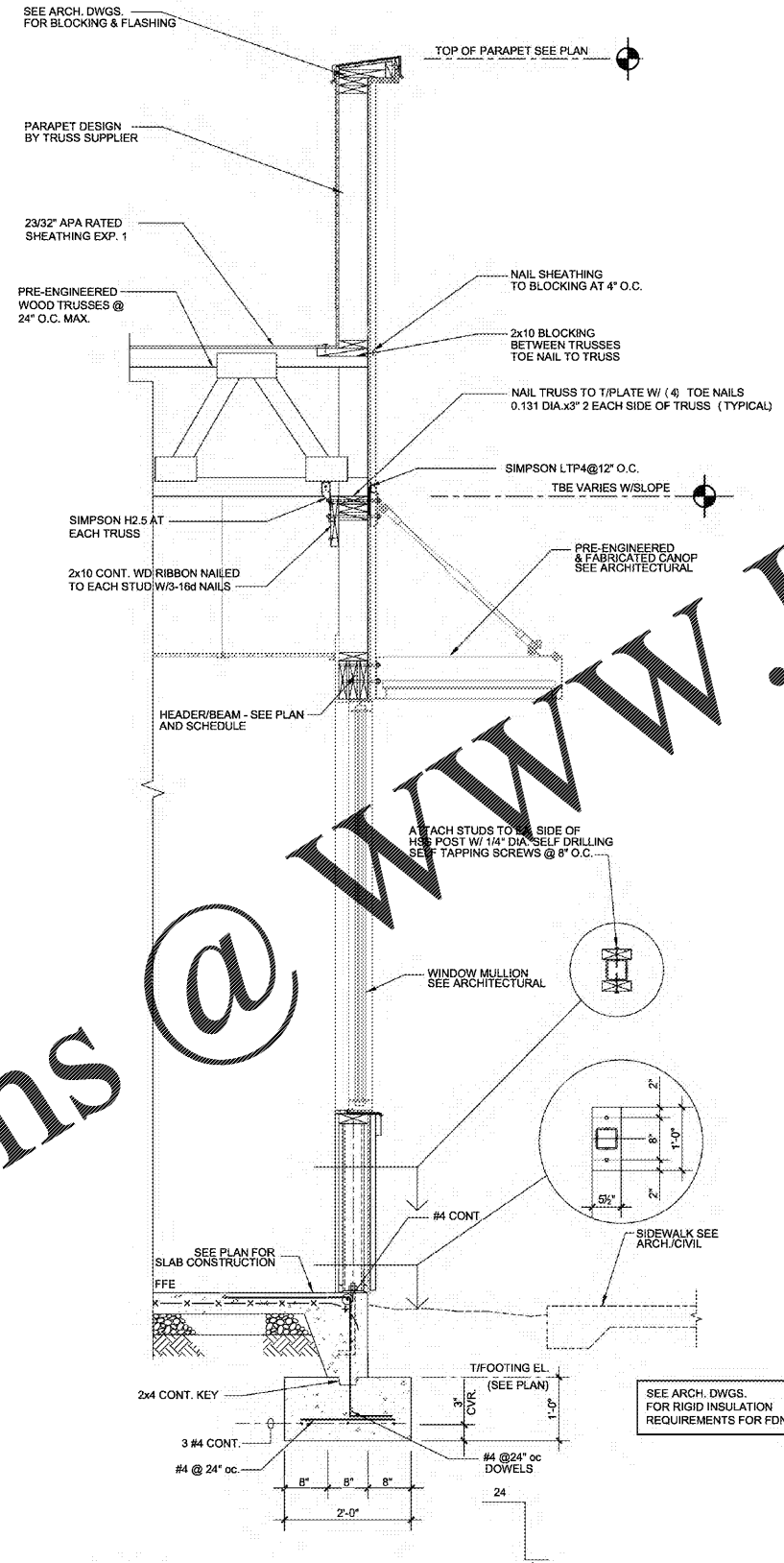


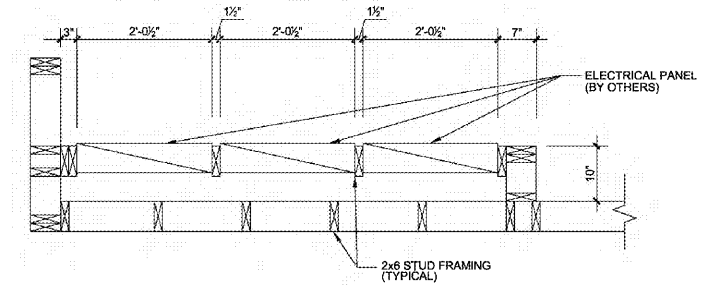
THIS DOCUMENT HAS BEEN PREPARED BY ARP ENGINEERING, INC. AS AN INSTRUMENT OF SERVICE AND ARP ENGINEERING, INC. SHALL RETAIN ALL COMMON LAW, STATUTORY AND OTHER RESERVED RIGHTS, INCLUDING THE COPYRIGHT THEREIN.



1 WALL SECTION
S7 3/4" = 1'-0"



2 WALL SECTION
S7 3/4" = 1'-0"



3 FRAMING @ CONVENTIONAL ELECTRIC PANEL WALL
S7 3/4" = 1'-0"

LINTEL SCHEDULE

MARK	WALL	DESCRIPTION	SPACING	MAX. OPENING	TYPE	HOLD DOWN ANCHORS
L5	2nd	2x10 STUDS @ 24" O.C. WITH 2x10 PLYWOOD BRACING	(1)-2x6	4'-0"	I	JSHL S02LS
L6	2nd	2x10 STUDS @ 24" O.C. WITH 2x10 PLYWOOD BRACING	(2)-2x6	6'-4"	I	JSHL S02LS
L7	2nd	1x10 STUDS @ 24" O.C. WITH 1x10 PLYWOOD BRACING	(3)-2x6	2'-0" EXTERIOR	II	JSHL S02LS

LINTEL NOTES:

- BEAR ON STUDS CALLED OUT IN SCHEDULE
- MAX. TRIMMER STUDS TO BE 1/4" DIA. SELF DRILLING SELF TAPPING SCREWS @ 8" O.C.
- ATTACH 3 PLY LINTELS TO TRIMMER STUDS AS PER DETAILS BELOW.

TYPE I

TYPE II

- BEAM & LINTEL NOTES FOR OPENINGS GREATER THAN 6'-4" :**
- BEAR ON STUDS CALLED OUT IN SCHEDULE @ EA. END & PROVIDE FULL HT. STUDS PER SCHEDULE AT EA. END.
 - PROVIDE CS16 STRAP TO BEARING STUDS AT EA. END OF LINTEL. RUN STRAP CONTINUOUS OVER TOP OF LINTEL WITH 16" MIN. OF END LENGTH ON BOTH SIDES OF THE STUD
 - PROVIDE LTT19 ANCHOR AT BASE OF BEARING STUDS.



POPEYE'S
 LOUISIANA KITCHEN
 921 CONCORD PARKWAY SOUTH,
 CONCORD, NC, 28027

ARP ENGINEERING
 CONSULTING ENGINEERS
 202 EAST FRANKLIN STREET, SUITE A
 FAYETTEVILLE, NC 28404
 (704) 781-2079 ext. 10
 CONTACT: aarp@arpeng.com
 NC COA 0384

NORTH CAROLINA
 PROFESSIONAL SEAL
 18427
 DE AN ARP
 8/14/20

If this document is sealed and signed in a digital or electronic format and is received from someone other than the sealing professional identified in the document, you must contact the sealing professional in writing to validate authenticity of the document. The sealing professional disclaims the seal and signature and shall not be liable for any liability associated with it where the authenticity of any digital or electronic seal or signature has not been validated in this manner.

ISSUANCE
 PERMIT SUBMITTAL 08/14/2020

REVISIONS
 NO. DATE DESCRIPTION
 AEI PROJECT No. 20091
 FILE NUMBER
 PROJECT MANAGER DS
 PROFESSIONAL EOR LDA
 DRAWN BY CADD
 CHECKED BY LDA