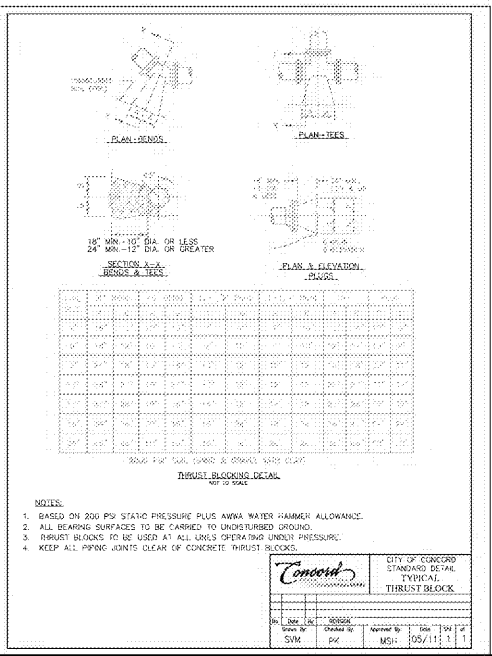
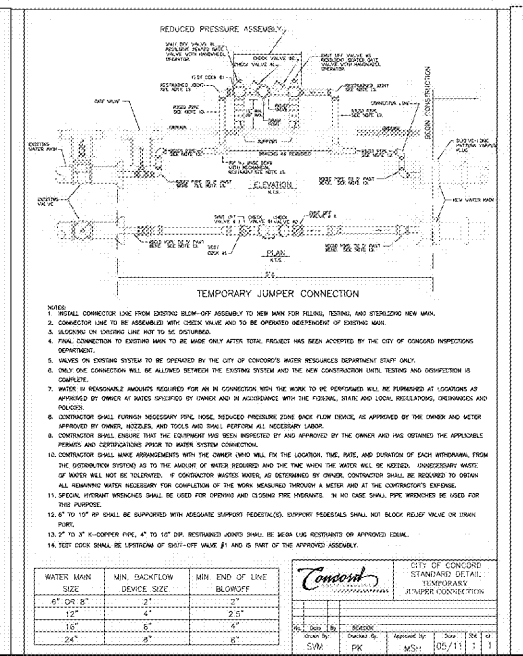
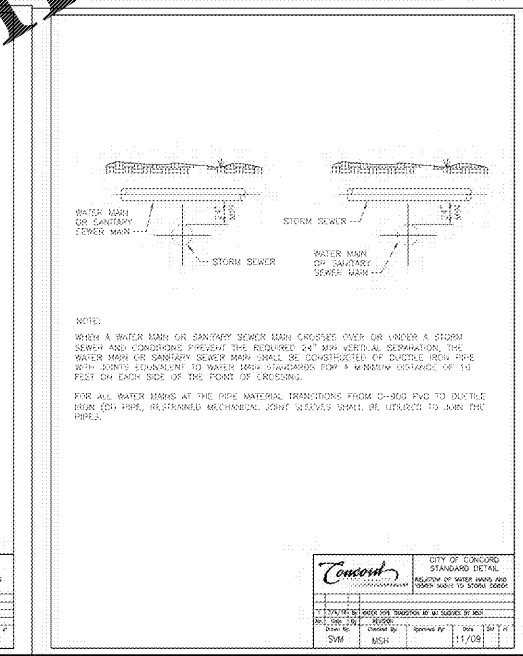
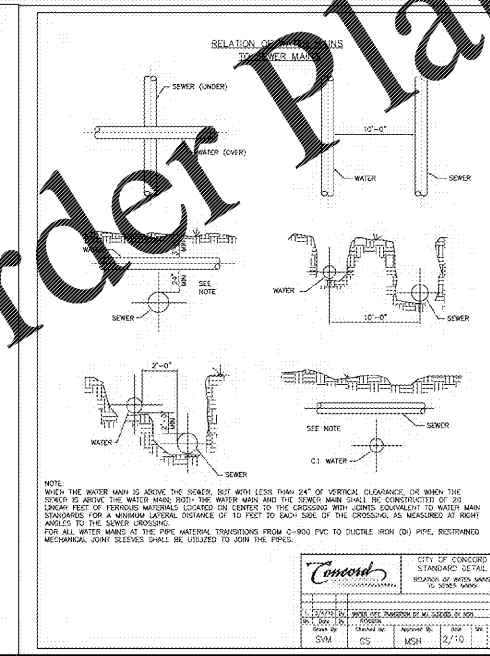
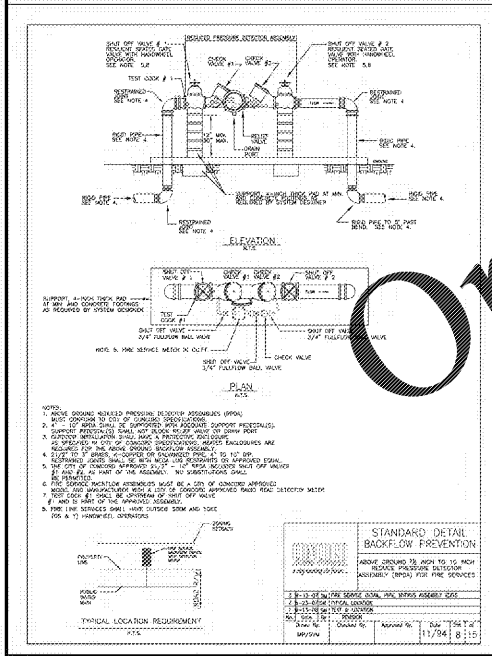
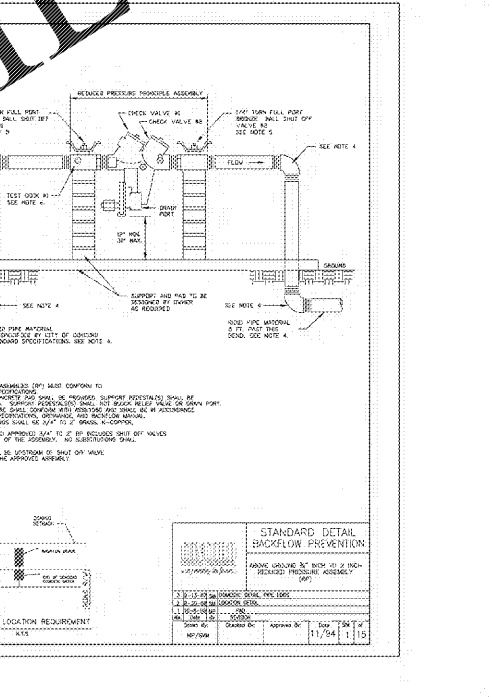
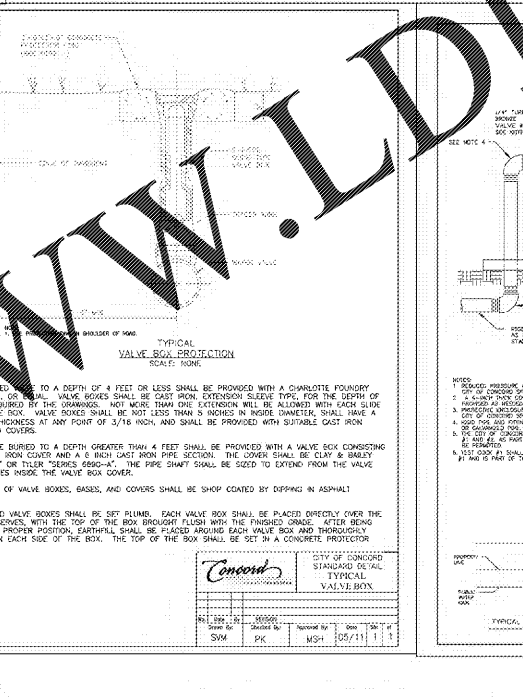
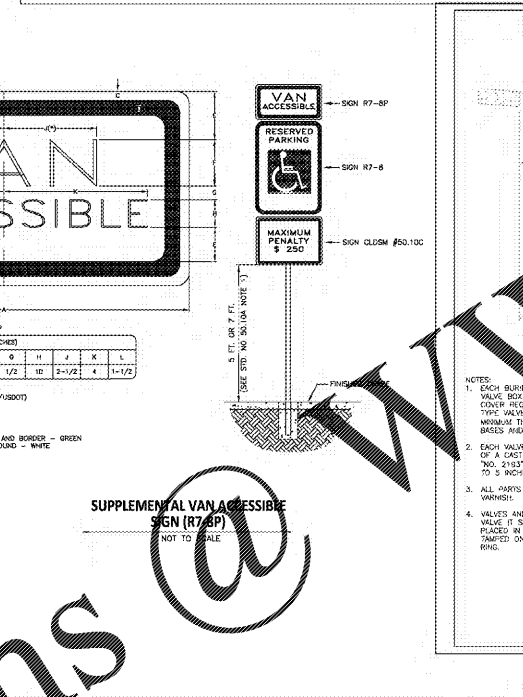
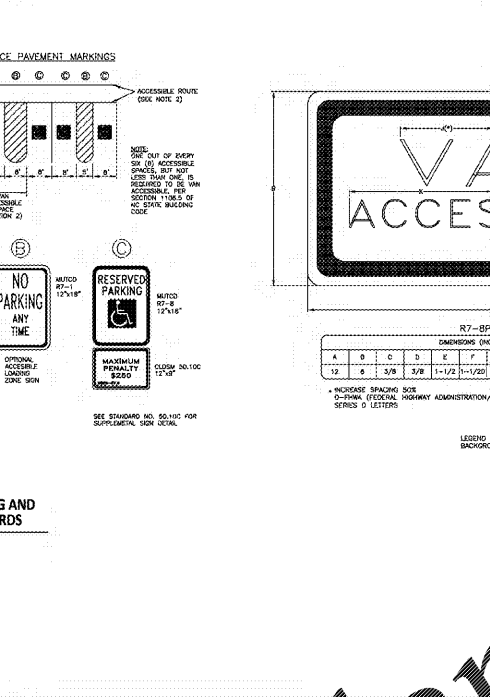


PIPE SIZE	MIN. DEPTH	MAX. DEPTH
2" & SMALLER	6"	12"
3" TO 6"	6"	12"
6" & LARGER	6"	12"

TOTAL PARKING SPACES PROVIDED	MINIMUM NUMBER OF ACCESSIBLE SPACES REQUIRED	MINIMUM NUMBER OF ACCESSIBLE SPACES REQUIRED TO BE VAN ACCESSIBLE
1 TO 25	1	0
26 TO 50	2	1
51 TO 75	3	1
76 TO 100	4	1
101 TO 150	5	1
151 TO 200	6	1
201 TO 300	7	2
301 TO 400	8	2
401 TO 500	9	2
501 TO 1000	2% OF TOTAL	1% OF TOTAL
1001 AND OVER	2% PLUS 1 FOR EACH 100 OVER 1000	1% PLUS 1 FOR EACH 100 OVER 1000



STIPULATION FOR REUSE  
THIS DRAWING WAS PREPARED FOR USE ON THE SPECIFIC SITE NAMED HEREIN. CONSTRUCTION OF THIS PROJECT REQUIRES THE SERVICES OF A REGISTERED PROFESSIONAL ENGINEER. REPRODUCTION OF THIS DRAWING FOR REUSE ON ANOTHER PROJECT IS NOT AUTHORIZED AND MAY BE CONTRARY TO THE LAW.

POPEYE'S  
915 CONCORD PARKWAY SOUTH  
CONCORD, NC 28027

NO.	DATE	DESCRIPTION

JOB NUMBER: C200030  
CHECKED BY: CMJ  
DRAWN BY: CDA  
DATE: 8-19-2020

AMERICAN Engineering  
American Engineering Associates - Southeast, P.A.  
8008 Corporate Center Dr. - Suite 110  
Charlotte, NC 28226  
1888-C-#12181  
704-375-2438

SITE DETAILS  
C8.3