



ISSUE DATE	08/24/2020
PHASE	Bid Set

#	DATE	REVISION

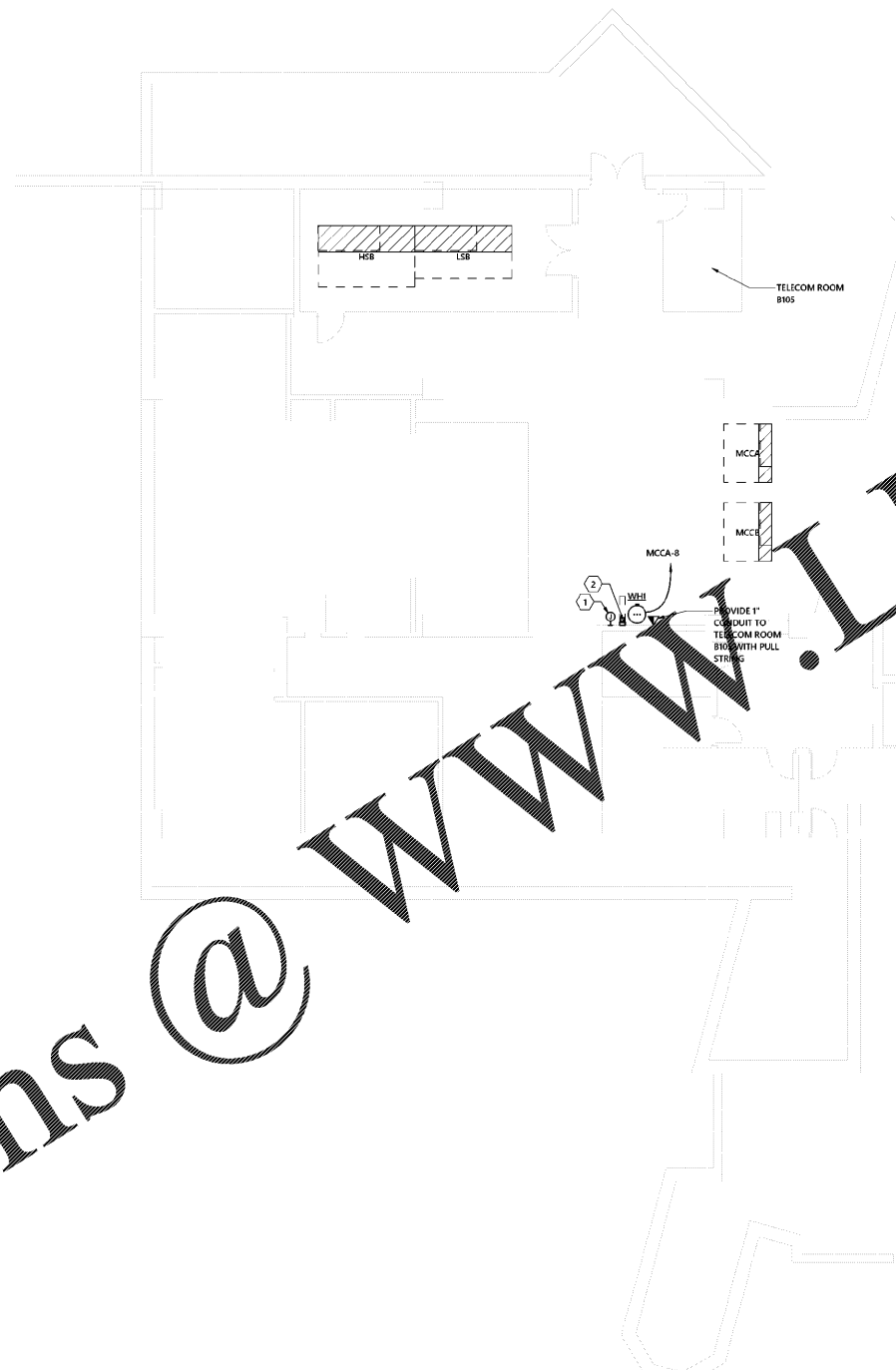
POWER PLAN -
LOWER LEVEL

GENERAL NOTES - POWER

- A WHERE CONNECTED TO A 20A. BRANCH CIRCUIT SUPPLYING AN INDIVIDUAL RECEPTACLE (SIMPLEX OR DUPLEX), THE RECEPTACLE SHALL BE RATED AT 20A.
- B REFER TO SECTION 26 0519 FOR MINIMUM CONDUCTOR SIZE ADJUSTMENTS FOR VOLTAGE DROP.
- C WIRE COUNTS FOR CIRCUIT CONDUCTORS ARE NOT SHOWN. PROVIDE PROPER NUMBER OF CONDUCTORS TO ACHIEVE CIRCUIT AND SWITCHING CONNECTIONS SHOWN. MODIFICATIONS TO NUMBER OF CONDUCTORS IN HOME RUNS FROM PANELS TO CIRCUITS INDICATED ON THIS DRAWING ARE PROHIBITED.
- D PANELBOARD SCHEDULES, BRANCH CIRCUITS, AND BREAKER SIZES SHALL BE SHOWN ON THE EQUIPMENT SCHEDULE. CIRCUIT BREAKER RATING, UNLESS INDICATED OTHERWISE ON THE ELECTRICAL EQUIPMENT SCHEDULE.

KEYNOTES

- 1 RELOCATE EXISTING 24"X24" (6-44/0, 1-#3 GRD.) JUNCTION BOX TO 8" AFF. FOR CHILLER TO ACCOMMODATE 12" DIA. WATER HEATER.
- 2 PROVIDE NEXUS 12" DIA. FOR WATER HEATER.



Order Plans @ www.LDILine.com

1 LOWER LEVEL - POWER PLAN
1/8" = 1'-0"

