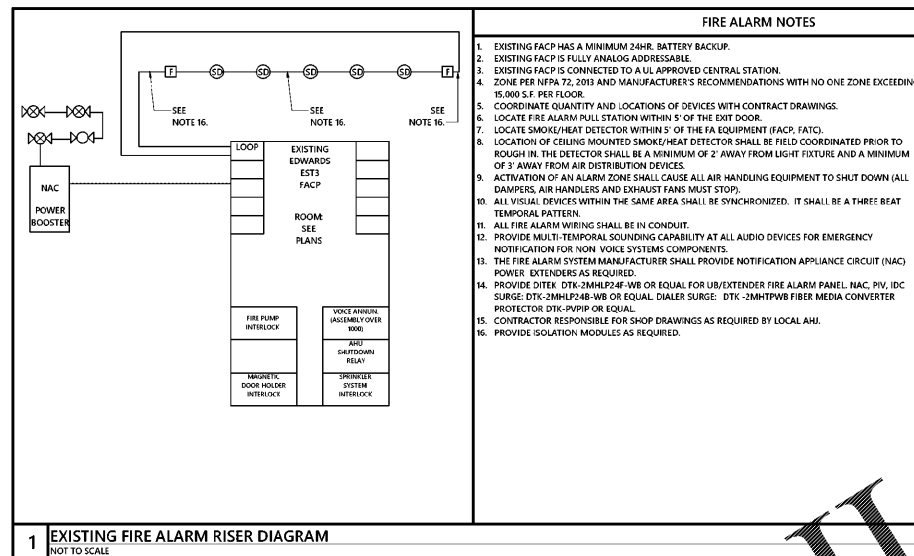
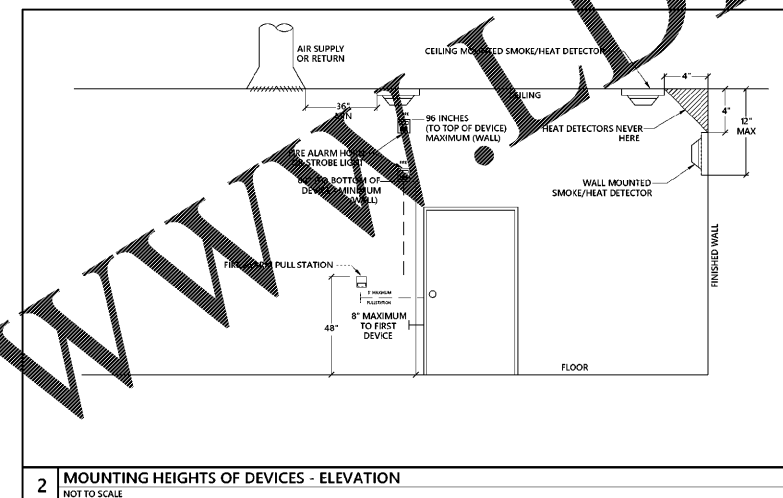
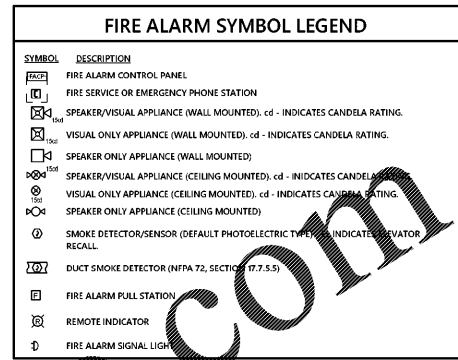


ISSUE DATE	08/24/2020	
PHASE	Bid Set	
#	DATE	REVISION

FIRE ALARM  
LEGEND AND  
NOTES



- FIRE ALARM NOTES**
- EXISTING FACP HAS A MINIMUM 24HR. BATTERY BACKUP.
  - EXISTING FACP IS FULLY ANALOG ADDRESSABLE.
  - EXISTING FACP IS CONNECTED TO A UL APPROVED CENTRAL STATION.
  - ZONE PER NFPA 72, 2013 AND MANUFACTURER'S RECOMMENDATIONS WITH NO ONE ZONE EXCEEDING 16,000 S.F. PER FLOOR.
  - COORDINATE QUANTITY AND LOCATIONS OF DEVICES WITH CONTRACT DRAWINGS.
  - LOCATE FIRE ALARM PULL STATION WITHIN 5' OF THE EXIT DOOR.
  - LOCATE SMOKE/HEAT DETECTOR WITHIN 5' OF THE FA EQUIPMENT (FACP, FATC).
  - LOCATION OF CEILING MOUNTED SMOKE/HEAT DETECTOR SHALL BE FIELD COORDINATED PRIOR TO ROUGH IN. THE DETECTOR SHALL BE A MINIMUM OF 2' AWAY FROM LIGHT FIXTURE AND A MINIMUM OF 3' AWAY FROM AIR DISTRIBUTION DEVICES.
  - ACTIVATION OF AN ALARM ZONE SHALL CAUSE ALL AIR HANDLING EQUIPMENT TO SHUT DOWN (ALL DAMPERS, AIR HANDLERS AND EXHAUST FANS MUST STOP).
  - ALL VISUAL DEVICES WITHIN THE SAME AREA SHALL BE SYNCHRONIZED. IT SHALL BE A THREE BEAT TEMPORAL PATTERN.
  - ALL FIRE ALARM WIRING SHALL BE IN CONDUIT.
  - PROVIDE MULTI-TEMPORAL SOUNDING CAPABILITY AT ALL AUDIO DEVICES FOR EMERGENCY NOTIFICATION FOR NON VOICE SYSTEMS COMPONENTS.
  - THE FIRE ALARM SYSTEM MANUFACTURER SHALL PROVIDE NOTIFICATION APPLIANCE CIRCUIT (NAC) POWER EXTENDERS AS REQUIRED.
  - PROVIDE DITEK DTK-2MHLP24F-WB OR EQUAL FOR UR/EXTENDER FIRE ALARM PANEL, NAC, P.V., IDC SURGE. DTK-2MHLP24B-WB OR EQUAL. DIALER SURGE: DTK-2MHTPWB FIBER MEDIA CONVERTER PROTECTOR DTK-2VWPB OR EQUAL.
  - CONTRACTOR RESPONSIBLE FOR SHOP DRAWINGS AS REQUIRED BY LOCAL AHJ.
  - PROVIDE ISOLATION MODULES AS REQUIRED.



- FIRE ALARM SPECIFICATIONS**
- FIRE ALARM SYSTEM:**
    - NEW DEVICES SHALL BE CONNECTED TO THE EXISTING FIRE ALARM SYSTEM IN COMPLIANCE WITH ALL APPLICABLE NFPA 72 AND OTHER STANDARDS AS WELL AS THE AMERICANS WITH DISABILITIES ACT (ADA). ALL FINAL CONNECTIONS, TESTING AND ADJUSTMENTS SHALL BE PERFORMED BY OR UNDER DIRECT SUPERVISION OF AN AUTHORIZED FACTORY REPRESENTATIVE. NEW DEVICES SHALL BE COMPATIBLE WITH THE EXISTING FIRE ALARM SYSTEM. THE CONTRACTOR SHALL FIELD VERIFY EXACT SYSTEM MANUFACTURER AND TYPE AND CAPABILITY TO MEET THE INTENT INDICATED ON THE DRAWINGS.
    - INITIATING DEVICE ACTIVATION SHALL CAUSE OPERATION OF THE PROPER ALARM CIRCUIT IN THE CONTROL PANEL AND OPERATE ALL AUDIBLE AND VISUAL INDICATING ALARMS. ALL AIR HANDLING UNITS SHALL BE STOPPED UPON ANY ALARM INPUT. EACH AIR HANDLER UNIT SHALL BE PROVIDED WITH A SYSTEM CONTROLLED RELAY TO EFFECT SHUTDOWN. ALL ALARM DEVICES AND LAMPS SHALL CONTINUE TO OPERATE UNTIL THE INITIATING DEVICE IS RESET. SUBSEQUENT ALARMS SHALL RESOUND THE SYSTEM. AN AUDIBLE AND VISUAL SIGNAL SHALL INDICATE SYSTEM TROUBLE. THE CONTROL PANEL SHALL PROVIDE FOR ACTIVATING A UL LISTED CENTRAL STATION SIGNAL FOR NOTIFYING THE FIRE DEPARTMENT.
    - MANUAL STATIONS SHALL BE NON-CODED, WITH PULL LEVER AND GLASS ROD; SEMI-FLUSH MOUNTED. COMBINATION LIGHT AND HORN SIGNALS SHALL BE FLUSH MOUNTED. WIRING SHALL BE IN CONDUIT AS PREVIOUSLY SPECIFIED. #14 AWG MINIMUM, THIN. ALL J-BOXES USED FOR THE FIRE ALARM SYSTEM SHALL BE PAINTED RED.
    - CONDUCTORS SHALL BE INSTALLED IN CONDUIT AND INSTALLED IN COMPLIANCE WITH NFPA 70, ARTICLE 760; IN ADDITION TO WIRING METHODS 300.4.
    - NEW FIRE ALARM WIRING SHALL MATCH EXISTING WIRING CLASS - CLASS A FOR SIGNAL LINE CIRCUITS AND INITIATING DEVICE CIRCUITS AND CLASS B FOR NOTIFICATION APPLIANCE CIRCUITS.
    - PROVIDE ALL REQUIRED MODULES, POWER EXTENDERS, PROGRAMMING, ETC. FOR A COMPLETE AND OPERATIONAL SYSTEM.
    - SUBMIT FIRE ALARM SHOP DRAWINGS CONSISTING OF PRODUCT DATA TO THE ENGINEER AND AUTHORITY HAVING JURISDICTION FOR APPROVAL.
    - COORDINATE NFPA 72 TESTING WITH ENGINEER AND FILL OUT NFPA 72 CERTIFICATION REPORT AND SUBMIT TO ENGINEER AND AUTHORITY HAVING JURISDICTION.
    - PROVIDE ALL REPROGRAMMING AND/OR REWORK AND/OR REPLACEMENT OF EXISTING FIRE ALARM PANEL AS REQUIRED.
    - PROVIDE ISOLATION MODULES AS REQUIRED. THREE FOR EACH ADDRESSABLE LOOP AND ONE FOR EACH 20 ADDRESSABLE DEVICES.

**FIRE ALARM SHEET INDEX**

SHEET NUMBER	SHEET NAME
FA0.01	FIRE ALARM LEGEND AND NOTES
FA0.01	DEMOLITION FIRE ALARM PLAN - LEVEL 01
FA0.02	FIRE ALARM PLAN - LEVEL 01

FIRE ALARM SYSTEM MATRIX	BUILDING SYSTEM OUTPUTS										
	ACTIVATE COMMON ALARM FROM INDICATOR	ACTIVATE ALARM FROM VISIBLE SIGNAL INDICATOR	ACTIVATE ALARM FROM SILENT SIGNAL INDICATOR	ACTIVATE ALARM FROM SILENT SIGNAL INDICATOR	ACTIVATE ALARM FROM SILENT SIGNAL INDICATOR	ACTIVATE ALARM FROM SILENT SIGNAL INDICATOR	ACTIVATE ALARM FROM SILENT SIGNAL INDICATOR	ACTIVATE ALARM FROM SILENT SIGNAL INDICATOR	ACTIVATE ALARM FROM SILENT SIGNAL INDICATOR	ACTIVATE ALARM FROM SILENT SIGNAL INDICATOR	ACTIVATE ALARM FROM SILENT SIGNAL INDICATOR
MANUAL FIRE ALARM PULL BOXES	X	X									
BUILDING SMOKE DETECTOR	X	X									
DUCT SMOKE DETECTOR	X	X									
SPRINKLER WATER FLOW	X	X									
SPRINKLER TAMPER	X	X									
ELEV. EQ. ROOM SMOKE DETECTOR	X	X									
ELEV. EQ. ROOM HEAT DETECTOR	X	X									
ELEV. SHAFT HEAT DETECTOR	X	X									
1ST FLOOR ELEV. LOBBY SMOKE DET.	X	X									
UPPER FLR. ELEV. LOBBY SMOKE DET.	X	X									
NOTIFICATION DEVICE SHORT CIRCUIT			X	X	X	X	X	X	X	X	X
OPEN CIRCUIT			X	X	X	X	X	X	X	X	X
GROUND FAULT			X	X	X	X	X	X	X	X	X
FIRE ALARM A.C. POWER FAILURE			X	X	X	X	X	X	X	X	X
FIRE ALARM SYSTEM LOW BATTERY			X	X	X	X	X	X	X	X	X
FIRE PUMP RUNNING			X	X	X	X	X	X	X	X	X
FIRE PUMP COMMON TROUBLE			X	X	X	X	X	X	X	X	X
FIRE PUMP POWER FAILURE/PHASE REVER.			X	X	X	X	X	X	X	X	X

Order Plans @

WWW.DIline.com